

EnCana Oil & Gas (USA) Inc.

ADDENDUM TO LEGAL PLATS FOR

PN-20 Well Pad

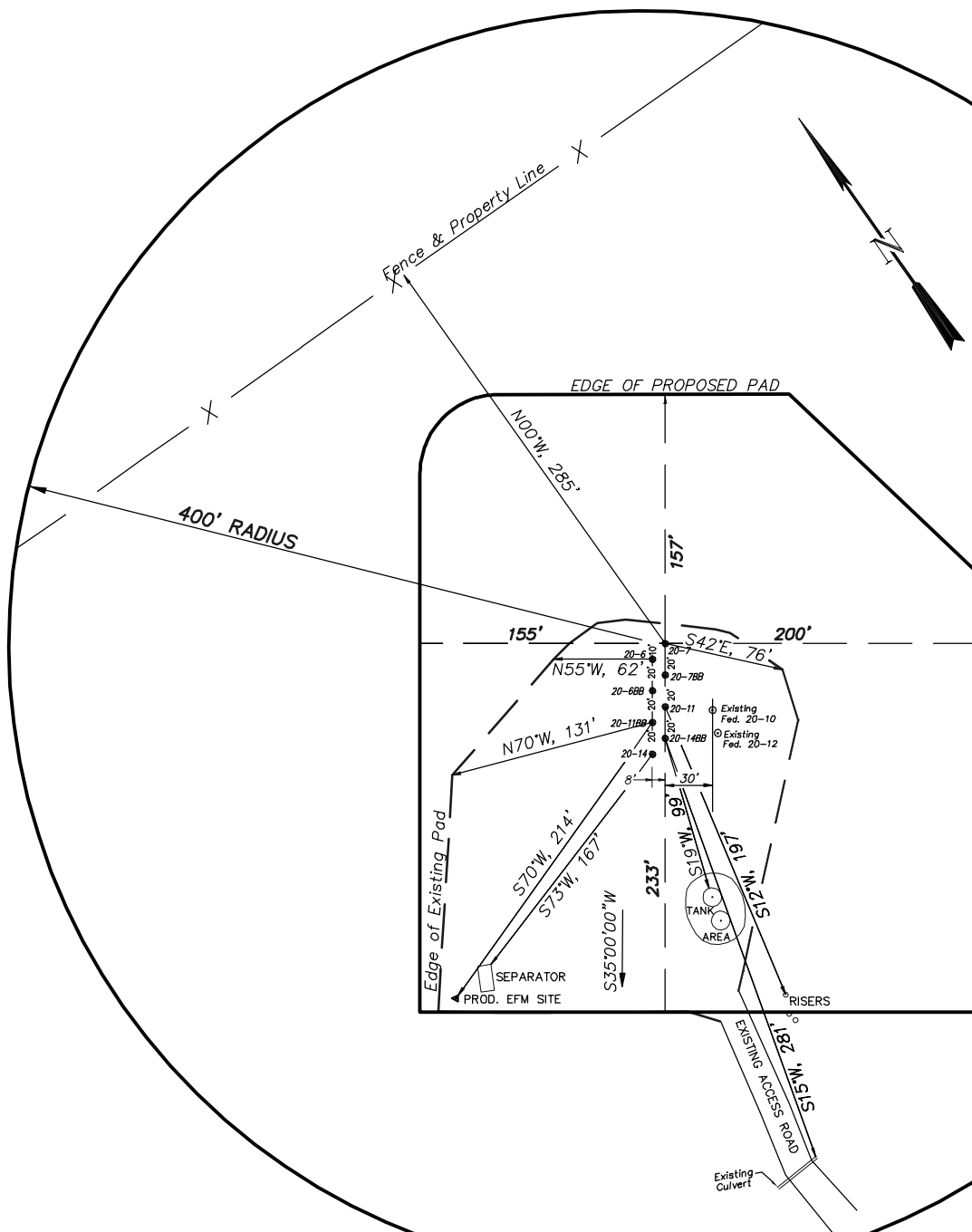
SE1/4 SW1/4, SECTION 20, T 7 S, R 95 W, 6th P.M.

DISTANCE TO NEAREST
PUBLIC ROAD IS
± 0.6 MILES.

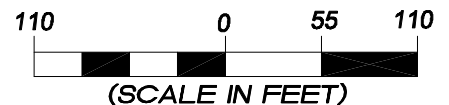
DISTANCE TO NEAREST
BUILDING IS ± 0.6
MILES.

DISTANCE TO NEAREST
ABOVE GROUND UTILITY
IS ± 0.3 MILES.

DISTANCE TO NEAREST
RAILROAD IS ±2.6 MILES.



Surface use of the area is an existing well pad. Surrounding area of use is grazing. Vegetation consists mainly of sage brush, oak brush and native grasses.



906 Main Street
Evanston, Wyoming 82930
Phone No. (307) 789-4545

Addendum		Scale: 1" = 110'	SHEET 1i OF 10
Project No.	05-04-73	Date Surveyed: 6/03/08	
Date Drawn:	8/31/09	Latest Revision Date:	

EnCana Oil & Gas (USA) Inc.
Well Pad (PN-20)
Section 20, T7S, R95W, 6th P.M.
WELL PAD INTERFERENCE PLAT

TOP HOLE FOOTAGES

FED. GARDNER 20-7 (PN-20)
 1083' FSL & 2187' FWL
 FED. GARDNER 20-7BB (PN-20)
 1066' FSL & 2175' FWL
 FED. 20-11 (PN-20)
 1050' FSL & 2163' FWL
 FED. 20-14BB (PN-20)
 1034' FSL & 2151' FWL
 FED. GARDNER 20-6 (PN-20)
 1079' FSL & 2174' FWL
 FED. GARDNER 20-6BB (PN-20)
 1063' FSL & 2163' FWL
 FED. 20-11BB (PN-20)
 1047' FSL & 2151' FWL
 FED. 20-14 (PN-20)
 1031' FSL & 2139' FWL

BOTTOM HOLE FOOTAGES

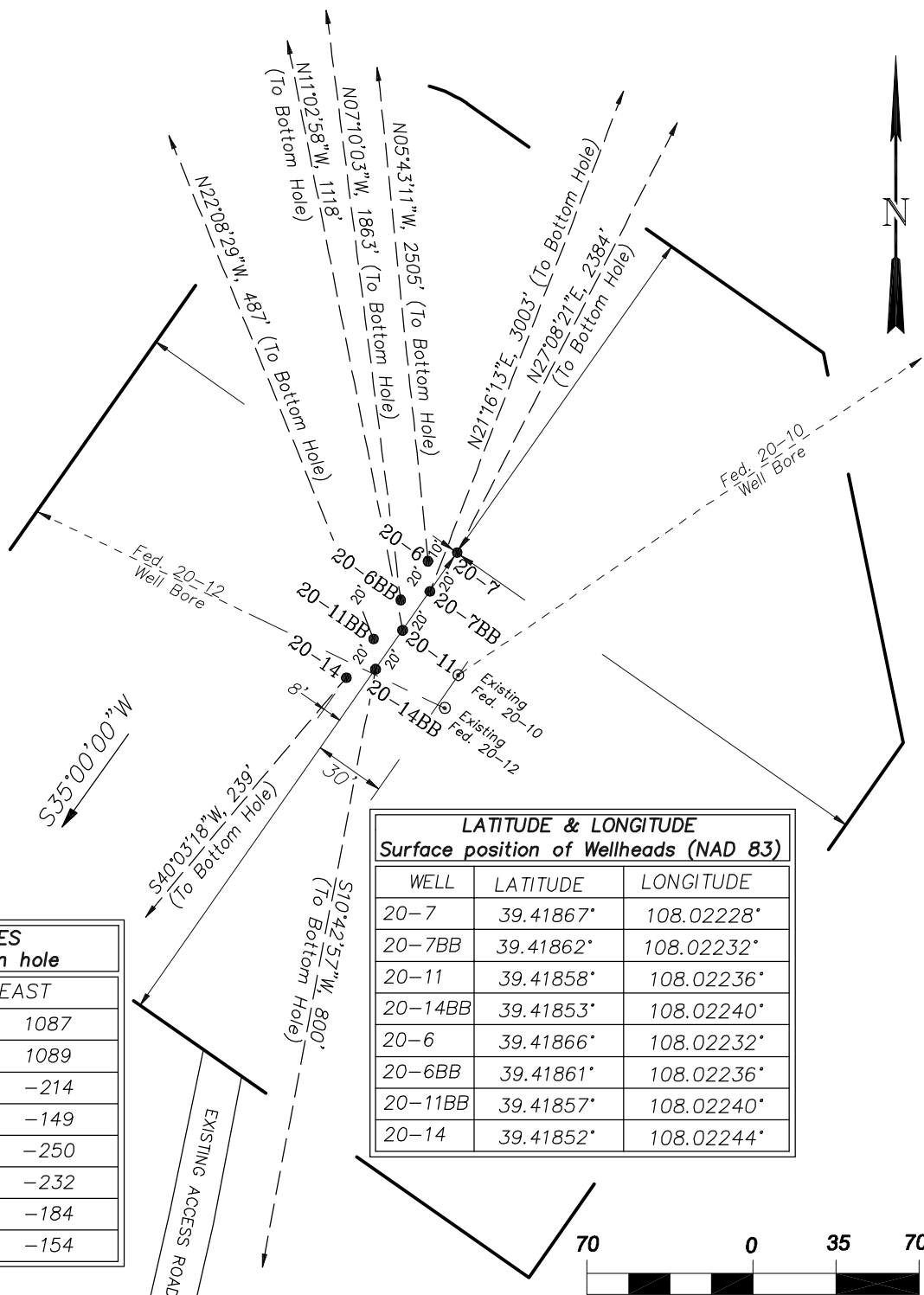
FED. GARDNER 20-7 (PN-20)
 2180' FNL & 1980' FEL SEC. 20
 FED. GARDNER 20-7BB (PN-20)
 1520' FNL & 1980' FEL SEC. 20
 FED. 20-11 (PN-20)
 2150' FSL & 1980' FWL SEC. 20
 FED. 20-14BB (PN-20)
 250' FSL & 1980' FWL SEC. 20
 FED. GARDNER 20-6 (PN-20)
 1810' FNL & 1980' FWL SEC. 20
 FED. GARDNER 20-6BB (PN-20)
 2470' FNL & 1980' FWL SEC. 20
 FED. 20-11BB (PN-20)
 1500' FSL & 1980' FWL SEC. 20
 FED. 20-14 (PN-20)
 850' FSL & 1980' FWL SEC. 20

RELATIVE COORDINATES
 From top hole to bottom hole

WELL	NORTH	EAST
20-7	2122	1087
20-7BB	2798	1089
20-11	1097	-214
20-14BB	-786	-149
20-6	2493	-250
20-6BB	1848	-232
20-11BB	451	-184
20-14	-183	-154

LATITUDE & LONGITUDE
 Surface position of Wellheads (NAD 83)

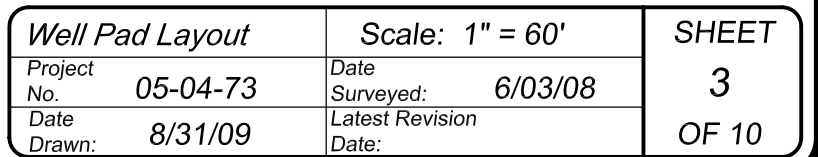
WELL	LATITUDE	LONGITUDE
20-7	39.41867°	108.02228°
20-7BB	39.41862°	108.02232°
20-11	39.41858°	108.02236°
20-14BB	39.41853°	108.02240°
20-6	39.41866°	108.02232°
20-6BB	39.41861°	108.02236°
20-11BB	39.41857°	108.02240°
20-14	39.41852°	108.02244°



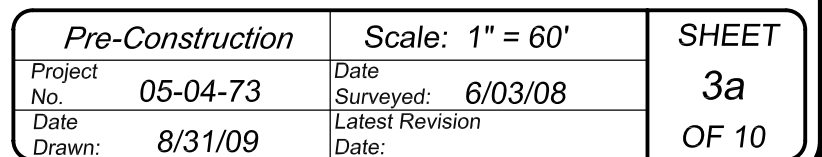
906 Main Street
 Evanston, Wyoming 82930
 Phone No. (307) 789-4545

Interference Plat	Scale: 1" = 70'	SHEET
Project No. 05-04-73	Date Surveyed: 6/03/08	2
Date Drawn: 8/31/09	Latest Revision Date:	OF 10

SE1/4 SW1/4, SECTION 20, T 7S, R 95 W, 6th P.M.



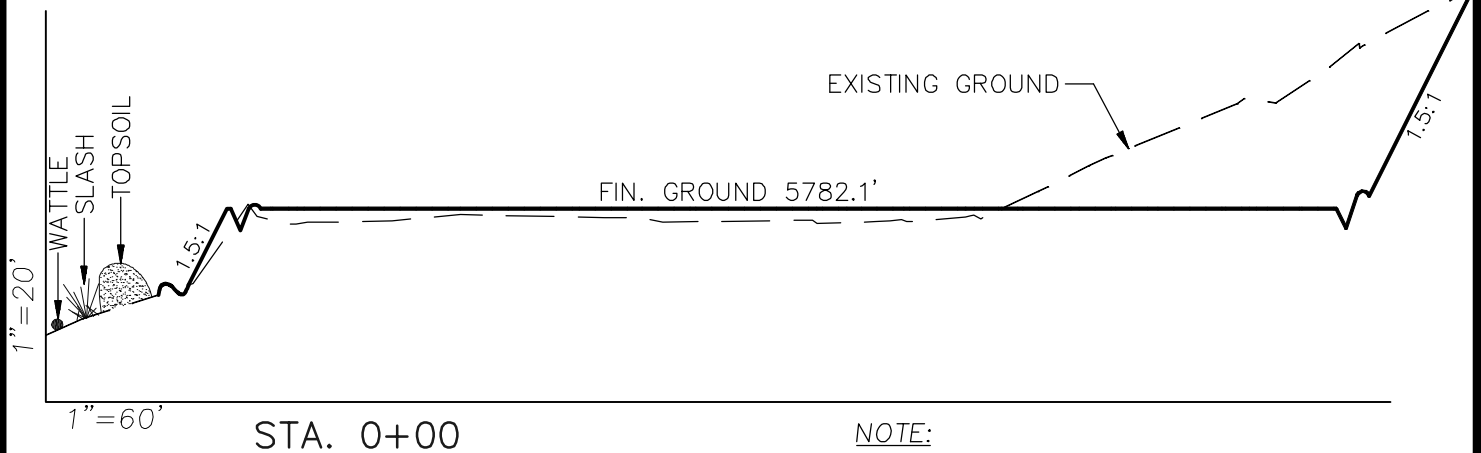
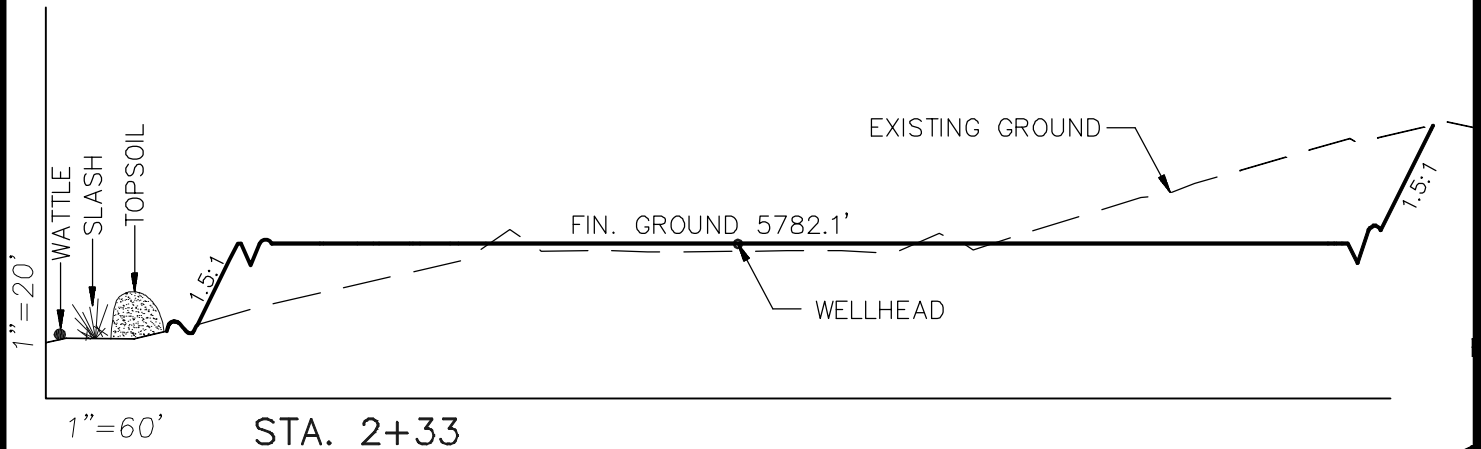
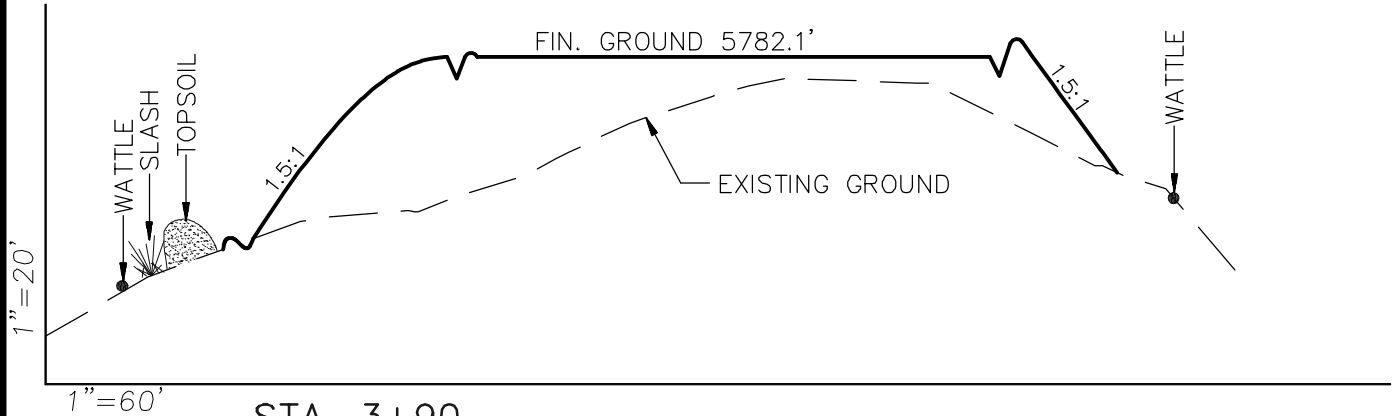
PRE-CONSTRUCTION PLAT



EnCana Oil & Gas (USA) Inc.

Well Pad (PN-20)

CROSS SECTIONS



NOTE:

THE EXCESS MATERIAL WILL BE USED TO CONSTRUCT WELL PAD CROWN.

SURFACE DISTURBANCE (IN ACRES)

Well Pad	3.0
Side Slopes	0.5
Topsoil & Waste Material	1.43
TOTAL	4.93

NOTE:

ALL CUT AND FILL SLOPES ARE AT 1.5:1 UNLESS OTHERWISE NOTED.

EARTHWORK QUANTITIES

(in Cubic Yards w/ 0% shrink/swell)

ITEM	CUT	FILL	6" TOPSOIL	EXCESS
PAD	12573	9230	Topsoil not included in Excavation	3343
PIT	0	0		0
TOTALS	12573	9230	2022	3343



906 Main Street
Evanston, Wyoming 82930
Phone No. (307) 789-4545

Cross Sections

Project No. 05-04-73
Date Drawn: 8/31/09

Scale: As Shown

Date Surveyed: 6/03/08
Latest Revision Date:

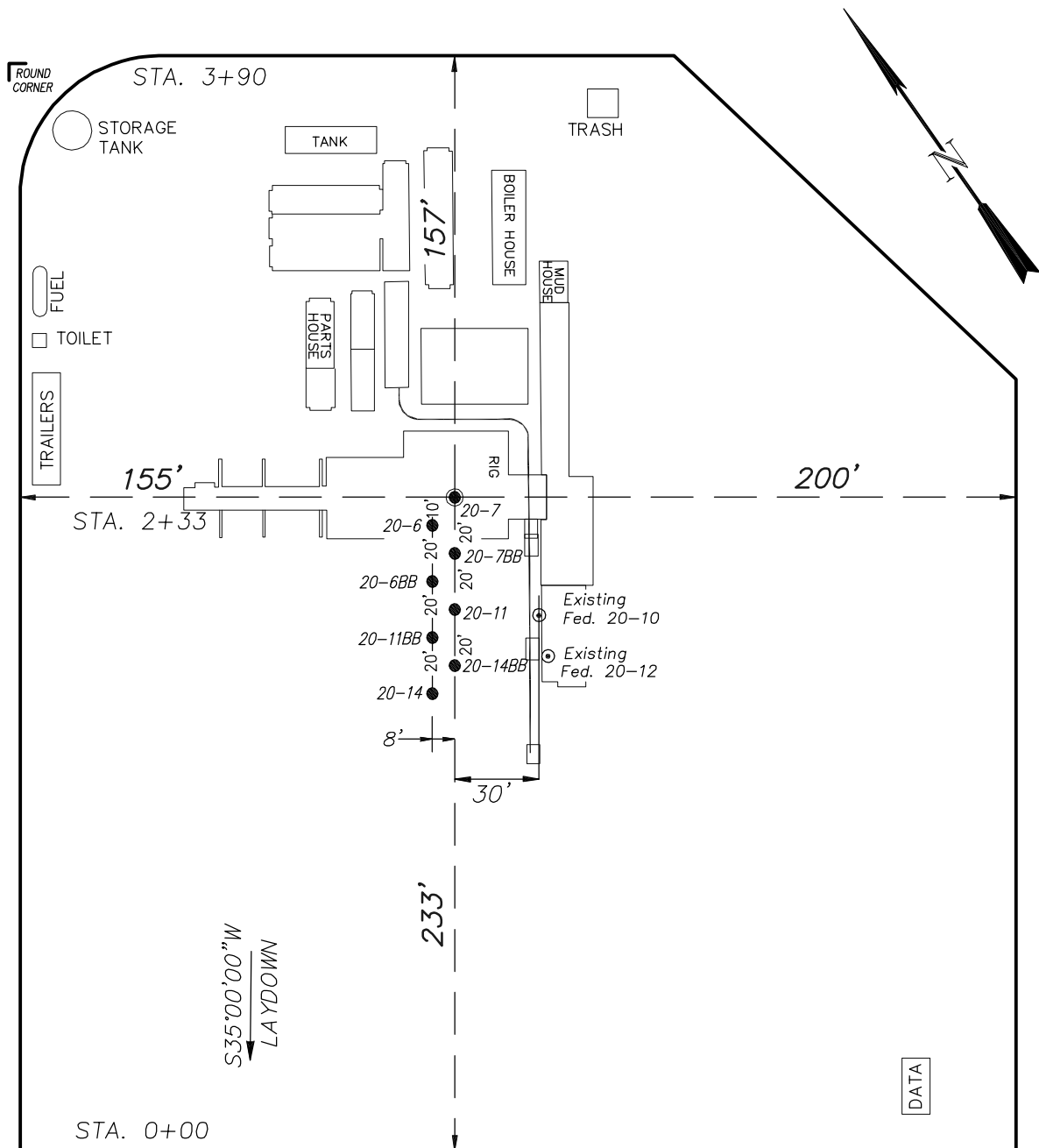
SHEET

4
OF 10

EnCana Oil & Gas (USA) Inc.

Well Pad (PN-20)

TYPICAL RIG LAYOUT



(SCALE IN FEET)

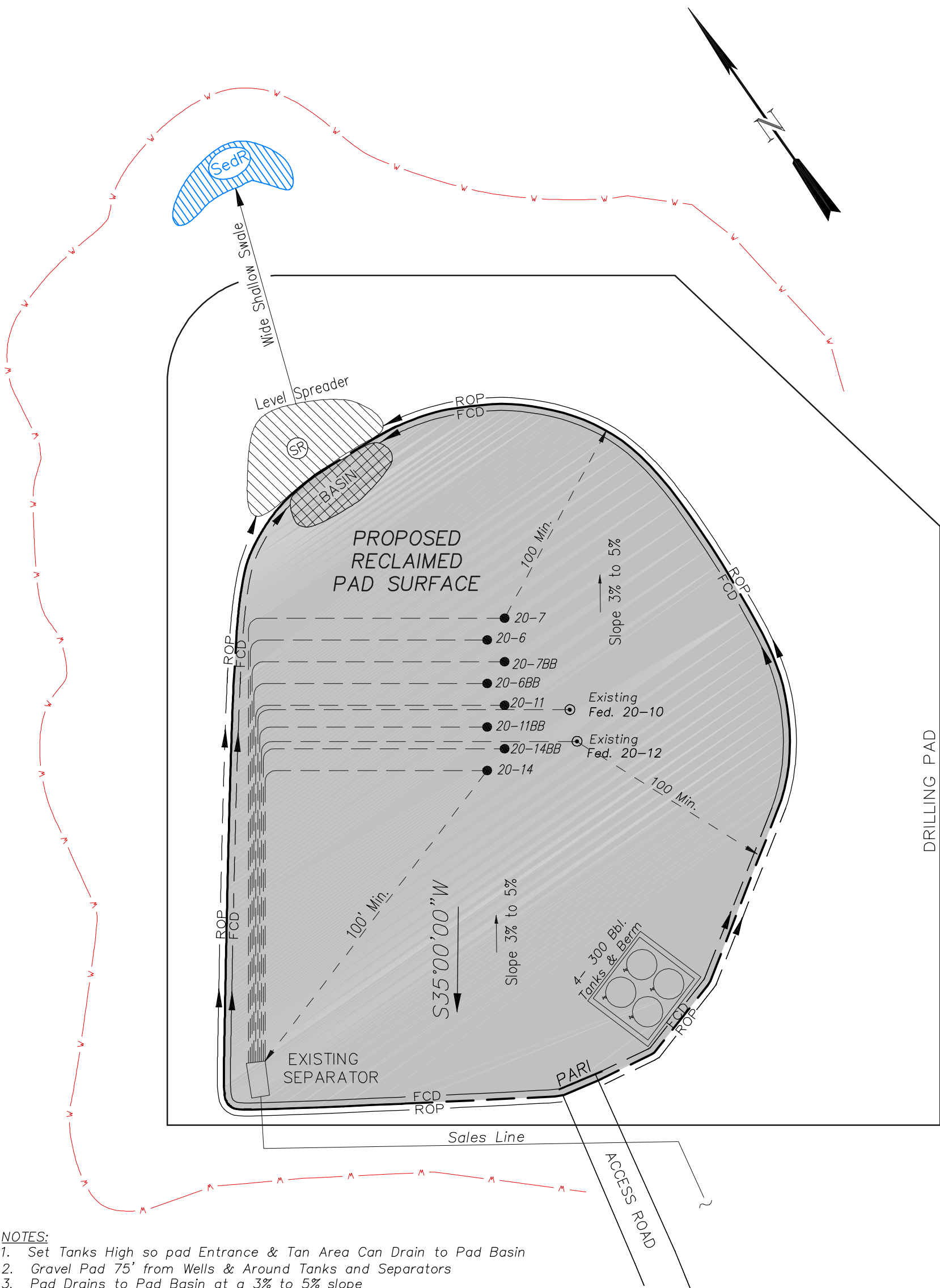


906 Main Street
Evanston, Wyoming 82930
Phone No. (307) 789-4545

Rig Layout		Scale: 1" = 60'	SHEET 5 OF 10
Project No.	05-04-73	Date Surveyed: 6/03/08	
Date	8/31/09	Latest Revision	
Drawn:	8/31/09	Date:	

EnCana Oil & Gas (USA) Inc.
PN-20 Well Pad

PRODUCTION SCHEMATIC



- NOTES:
1. Set Tanks High so pad Entrance & Tan Area Can Drain to Pad Basin
 2. Gravel Pad 75' from Wells & Around Tanks and Separators
 3. Pad Drains to Pad Basin at a 3% to 5% slope
 4. BMP Selection and Position may change Depending on Actual Conditions Encountered During the Construction Process

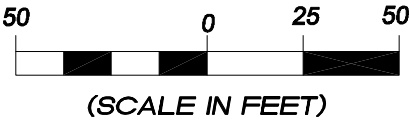
NOTE:
Actual Equipment Layout and Reclaimed Pad Surface Area May Change do to Production Requirements or Site Conditions.

ESTIMATED AREAS
RECLAIMED AREA: 3.3 ACRES
UNRECLAIMED AREA: 1.6 ACRES

- LEGEND
- S— = SLASH
 - ST = SEDIMENT TRAP
 - SedR = SEDIMENT RESERVOIR
 - R.O.D. = RUN-ON DIVERSION
 - W- = PERIMETER CONTROL (WATTLES)
 - CSD = CUT SLOPE DIVERSION (BERM TOE OF CUT SLOPE)
 - D = FILL DIVERSION TO SEDIMENT TRAP
 - VGB = VEGETATION BUFFER (UNDISTURBED LAND INSIDE PC)
 - FCD = FLOW CONTROL DITCH
 - PARI = PAD/ACCESS ROAD INTERFACE
 - [Pattern] = LEVEL SPREADER
 - [Pattern] = TOE BERM (PLACED AT TOE OF ALL FILL SLOPES/STOCKPILES)
 - [Pattern] = TOPSOIL BERM
 - [Pattern] = SEED, ECB & FLEX
 - [Pattern] = SEED

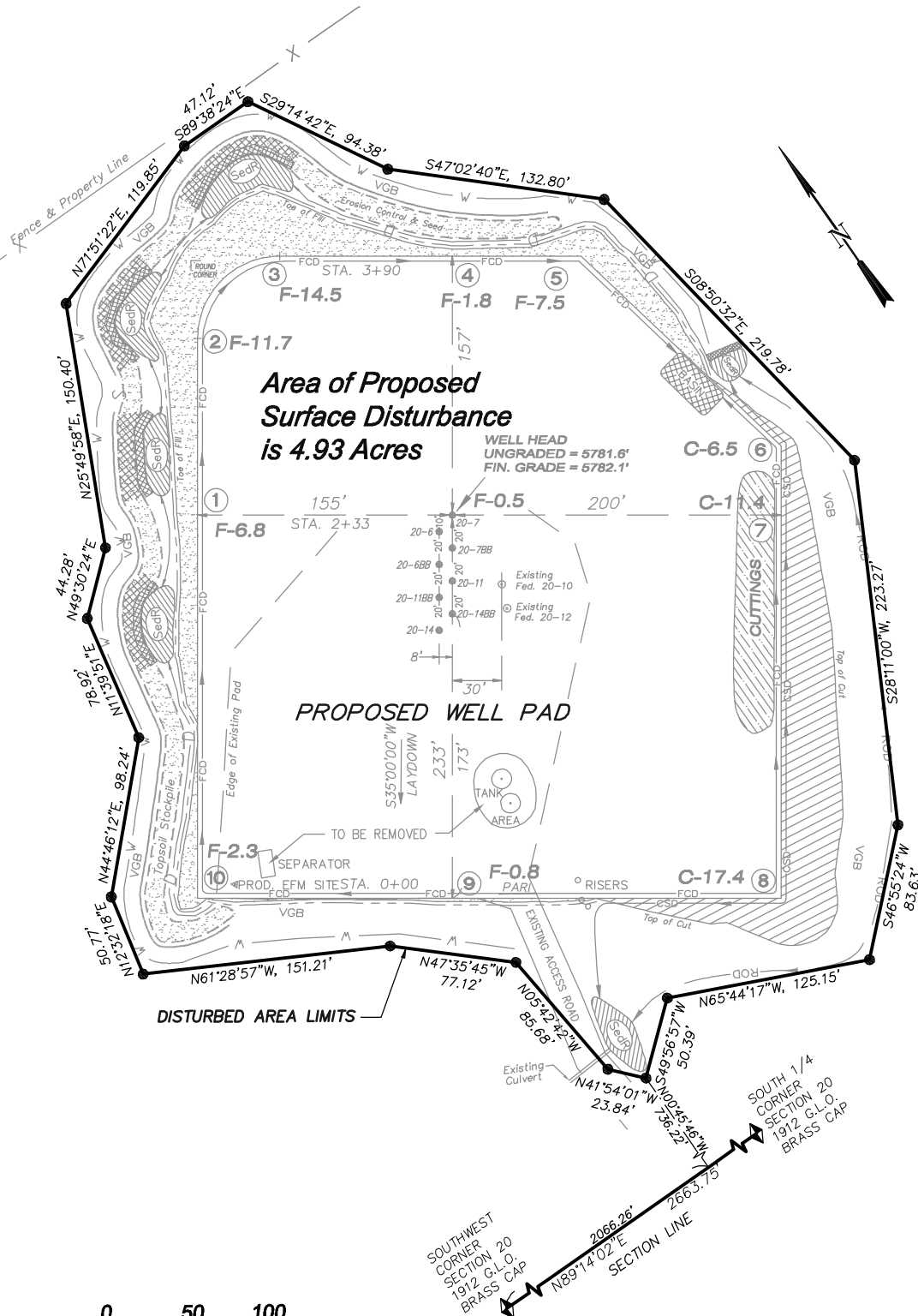


906 Main Street
Evanston, Wyoming 82930
Phone No. (307) 789-4545



Production Schematic		Scale: 1" = 50'	SHEET 6 OF 10
Project No.	05-04-73	Date Surveyed: 6/03/08	
Date Drawn: 8/31/08		Latest Revision Date:	

EnCana Oil & Gas (USA) Inc.
PN-20 Well Pad
Section 20, T7S, R95W, 6th P.M.
SURFACE DISTURBANCE AREA



(SCALE IN FEET)



**906 Main Street
Evanston, Wyoming 82930
Phone No. (307) 789-4545**

Surface Disturbance		Scale: 1" = 100'	SHEET 7 OF 10
Project No.	05-04-73	Date Surveyed: 6/03/08	
Date Drawn:	8/31/09	Latest Revision Date:	