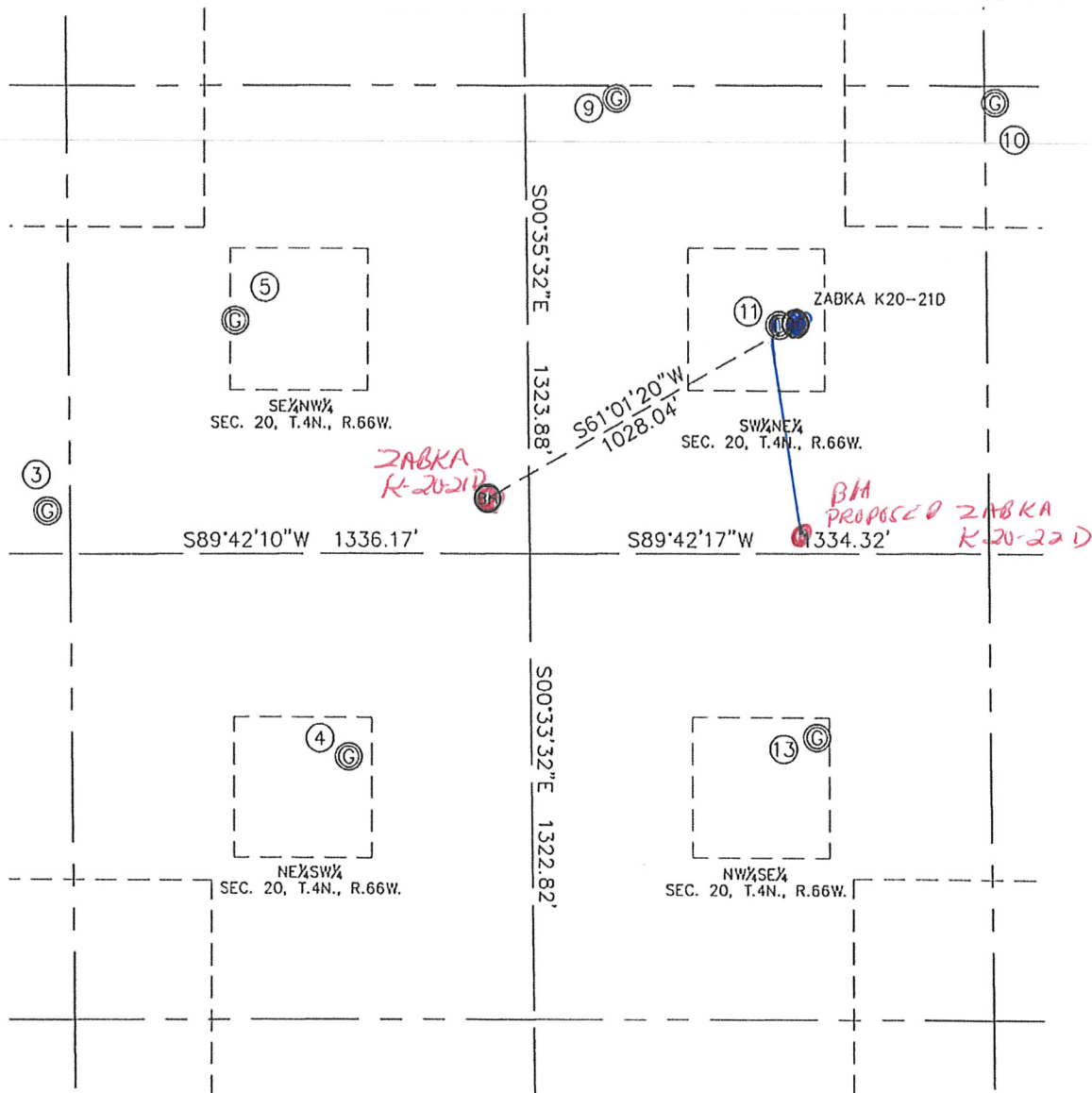


MULTI-WELL PLAN

ION: 20  
NSHIP: 4N  
3E: 66W



- |  |  |   |  |  |   |  |
|--|--|---|--|--|---|--|
| ③<br>ZABKA K 20-20<br>SW $\frac{1}{4}$ NW $\frac{1}{4}$<br>2525' FNL<br>1270' FWL<br>LAT-40.29748°N<br>LONG-104.80647°W<br>PDOP: 1.7<br>ELEV: 4746 | ④<br>SPARROW AMOCO 23-20<br>NE $\frac{1}{4}$ SW $\frac{1}{4}$<br>2071' FSL<br>2138' FWL<br>LAT-40.29556°N<br>LONG-104.80336°W<br>PDOP: 3.1<br>ELEV: 4749 | ⑤<br>KERBS K 20-6<br>SE $\frac{1}{4}$ NW $\frac{1}{4}$<br>1987' FNL<br>1819' FWL<br>LAT-40.29896°N<br>LONG-104.80451°W<br>PDOP: 2.4<br>ELEV: 4744 | ⑨<br>ZABKA K 20-18<br>SW $\frac{1}{4}$ NE $\frac{1}{4}$<br>1361' FNL<br>2409' FEL<br>LAT-40.30067°N<br>LONG-104.80050°W<br>PDOP: 1.1<br>ELEV: 4751 | ⑩<br>ZABKA K 20-17<br>SE $\frac{1}{4}$ NE $\frac{1}{4}$<br>1371' FNL<br>1307' FEL<br>LAT-40.30063°N<br>LONG-104.79656°W<br>PDOP: 1.2<br>ELEV: 4746 | ⑪<br>BIRD RK 20-7<br>SW $\frac{1}{4}$ NE $\frac{1}{4}$<br>2000' FNL<br>1937' FEL<br>LAT-40.29891°N<br>LONG-104.79882°W<br>PDOP: 1.2<br>ELEV: 4747 | ⑬<br>MCCLELLAN 33-20<br>NW $\frac{1}{4}$ SE $\frac{1}{4}$<br>2127' FSL<br>1835' FEL<br>LAT-40.29570°N<br>LONG-104.79846°W<br>PDOP: 2.1<br>ELEV: 4746 |
|--|--|---|--|--|---|--|

