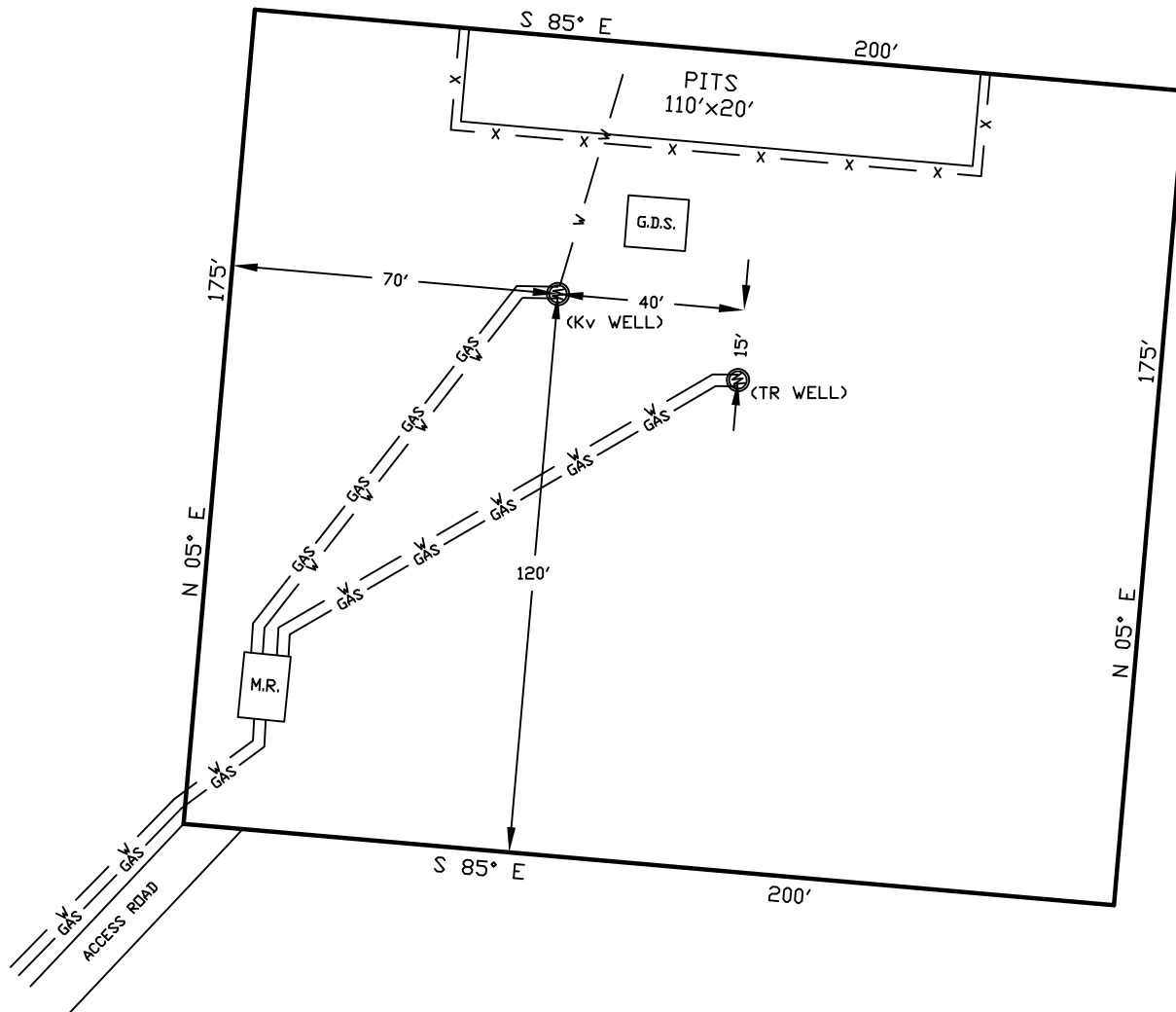


# WELLSITE/PRODUCTION EQUIPMENT LAYOUT

OPERATOR: Pioneer Natural Resources

WELL NAME: Elmira 12-33 TR

SWNW of SECTION 33 TOWNSHIP 32 S, RANGE 66 W OF THE 6TH P.M., IN LAS ANIMAS COUNTY



## NOTE:

MUD AND BLOW PITS WILL BE CONVERTED TO UNLINED EVAPORATION PITS FOR PRODUCTION.

WELLHEADS ARE TYPICALLY PCP DRIVE HEADS

September 05, 2008 (Revised)

Date Platted

## GRAPHIC SCALE



( IN FEET )

1 inch = 40 ft.

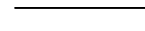
## LEGEND:



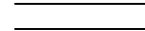
= WELLHEAD



= EXISTING WELLPAD



= FENCE (4 STRAND)



= 4" GAS GATHERING LINE



= 2" WATER LINE

M.R. = COMBO METER RUN AND WATER/GAS SEPARATOR

G.D.S. = GAS DRIVE SYSTEM

SHIELDS SURVEY L<sup>td</sup>. C<sup>o</sup>.  
Raton, New Mexico 87740  
(505)445-1232