

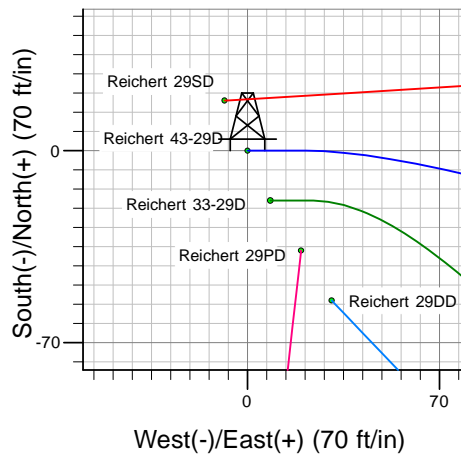
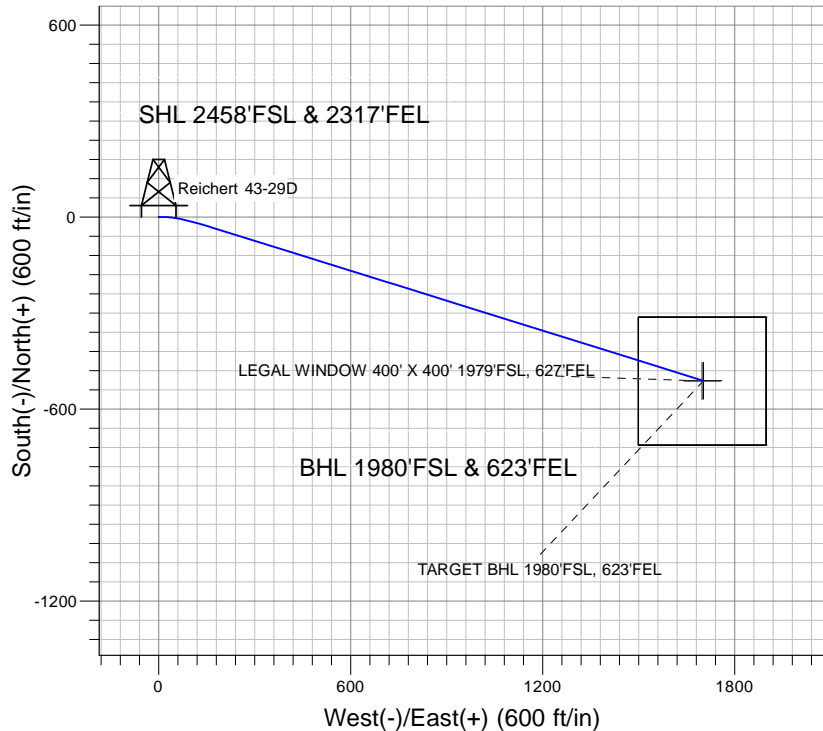
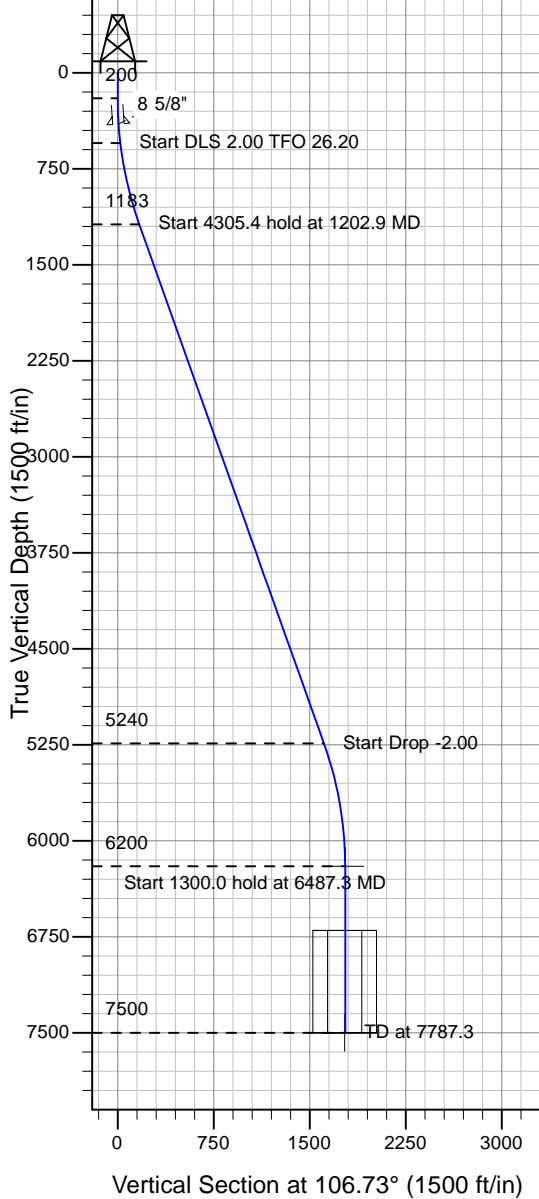
ENSIGN

Directional

Well Name: Reichert 43-29D

Surface Location: Reichert Pad Sec.29-T4N-R67W
 North American Datum 1983 , US State Plane 1983 , Colorado Northern Zone
 Ground Elevation: 4970.0
 +N/-S+E/-W Northing Easting Latitude Longitude Slot
 0.0 0.0 1346697.78 3163614.43 40° 17' 0.960 N 104° 54' 48.744 W
 Original Well Elev WELL @ 4983.0ft (Original Well Elev)

PETROLEUM DEVELOPMENT CORP Weld County CO



Reichert Pad Sec.29-T4N-R67W
 Reichert 43-29D
 Plan #2 (5-29-09)
 15:17, May 29 2009



Azimuths to True North
 Magnetic North: 9.18°
 Magnetic Field
 Strength: 53291.6snT
 Dip Angle: 67.01°
 Date: 5/12/2009
 Model: IGRF200510

WELLBORE TARGET DETAILS (LAT/LONG)

Name	TVD	+N/-S	+E/-W	Latitude	Longitude	Shape
TARGET BHL 1980'FSL, 623'FEL	6200.0	-511.5	1701.8	40° 16' 55.904 N	104° 54' 26.786 W	Point
LEGAL WINDOW 400' X 400' 1979'FSL, 627'FEL	7500.0	-512.5	1697.8	40° 16' 55.895 N	104° 54' 26.837 W	Rectangle (Sides: L400.0 W400.0)

SECTION DETAILS

Sec	MD	Inc	Azi	TVD	+N/-S	+E/-W	DLeg	TFace	VSec	Target
1	0.0	0.00	0.00	0.0	0.0	0.0	0.00	0.00	0.0	
2	200.0	0.00	0.00	200.0	0.0	0.0	0.00	0.00	0.0	
3	550.0	7.00	90.00	549.1	0.0	21.4	2.00	90.00	20.4	
4	1202.9	19.58	107.32	1183.5	-32.7	166.2	2.00	26.20	168.6	
5	5508.3	19.58	107.32	5239.9	-462.2	1543.6	0.00	0.00	1611.4	
6	6487.3	0.00	0.00	6200.0	-511.5	1701.8	2.00	180.00	1777.0	TARGET BHL 1980'FSL, 623'FEL
7	7787.3	0.00	0.00	7500.0	-511.5	1701.8	0.00	0.00	1777.0	