

WELL LOCATION CERTIFICATE

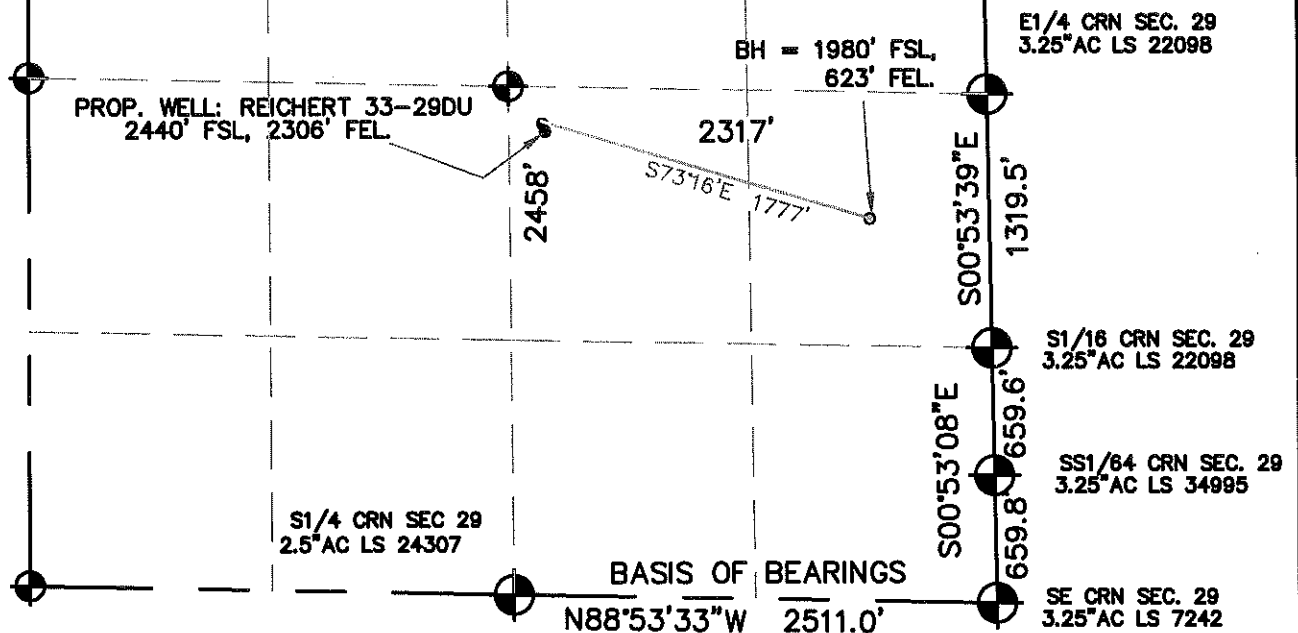
SECTION 29, TOWNSHIP 4 NORTH, RANGE 67 WEST, 6TH P.M.

NOTES:

THIS IS A DIRECTIONAL DRILL WELL.
BOTTOM HOLE AT 1980' FSL, 623' FEL.

WELL FALLS IN A PLOWED FIELD.
A PROPOSED WELL IS 22' SSE.
(SEE LOCATION DRAWING FOR IMPROVEMENTS)

GROUND ELEVATION = 4970'
LAT. & LONG. = N 40.28360°
W 104.91354°

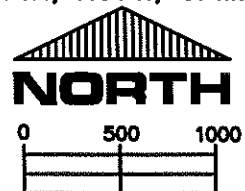


I HEREBY STATE TO UNIOIL THAT THIS WELL LOCATION CERTIFICATE FOR
THE WELL REICHERT 43-29DU IS LOCATED 2458' FSL & 2317' FEL, SEC. 29, T4N, R67W, 6PM.



LEGEND

- = FOUND MONUMENT
- = PROPOSED WELL
- = IMPROVEMENTS (AS LABELED)



SCALE 1" = 1000'

ELEVATION SOURCE = USGS 7.5' QUAD.MAP CONTOURS
NGVD 1929 DATUM.

LAT. & LONG. ARE DIFFERENTIALLY CORRECTED (NAD'83)
USING (DGPS) WITH (PDOP) VALUES LESS THAN SIX (6).

THOMAS G. CARLSON, PLS 24657
HORSESHOE SURVEYING, LLC

SHOWN DISTANCES ARE FIELD MEASURED - EXTERIOR SECTION LINES
ARE DRAWN TO SCALE (BEST APPROX. OR FOUND MONUMENT).

THIS IS NOT A MONUMENTED BOUNDARY SURVEY, IT IS ONLY A
DRAWING INTENDED TO DEPICT THE WELL LOCATION TO SECTION LINES.

DISTANCES TO WELL SHOWN PERPENDICULAR
TO SECTION LINES.

PREPARED BY:		HORSESHOE SURVEYING, LLC PO BOX 150458 LAKEWOOD, CO 80215 (720)872-0196		WELL NAME: REICHERT 43-29DU	
DRAWING DATE: 7-21-09				LOCATION: WELD COUNTY, CO SE1/4, SEC. 29, T4N, R67W, 6TH P.M.	
FIELD DATE: 5-5-09	BY: TGC	CHKD:		JOB NO.	SHEET NO. 1 OF 1