

ENSIGN

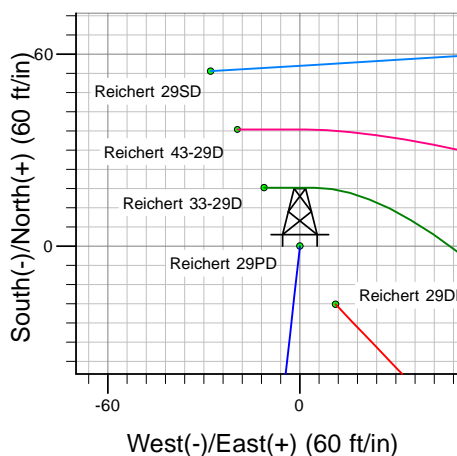
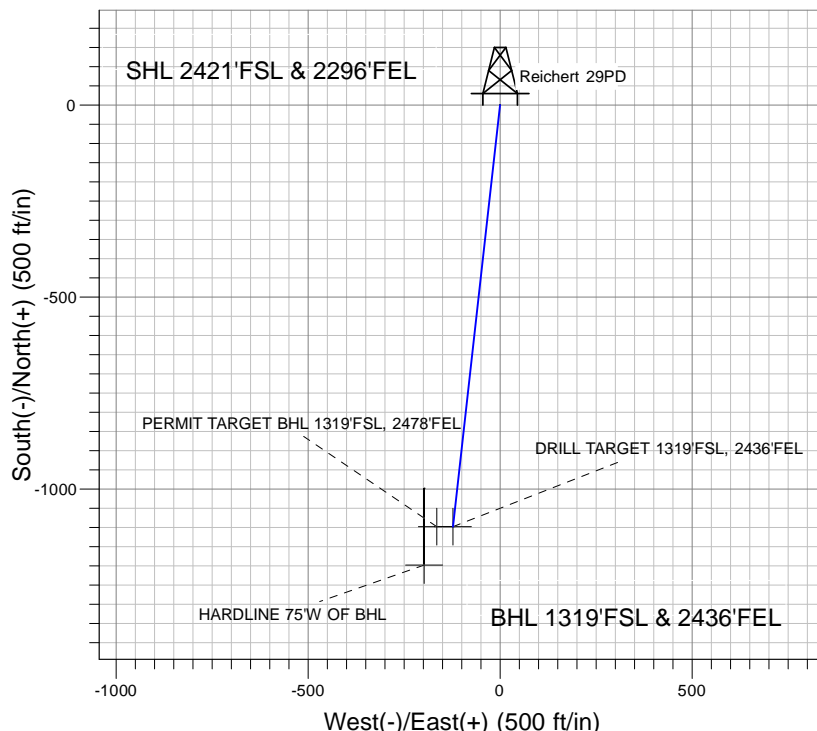
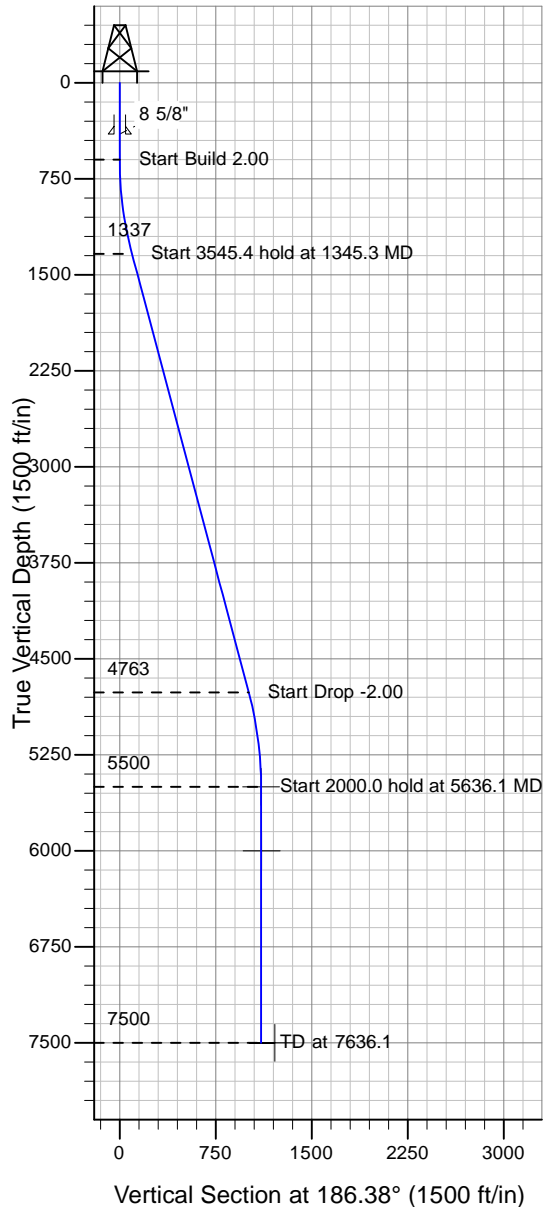
Directional

Well Name: Reichert 29PD

Surface Location: Reichert Pad Sec.29-T4N-R67W
 North American Datum 1983 , US State Plane 1983 , Colorado Northern Zone
 Ground Elevation: 4970.0

+N/-S+E/-W Northing Easting Latitude Longitude Slot
 0.0 0.0 1346661.48 3163634.20 40° 17' 0.600 N 104° 54' 48.492 W
 Original Well Elev WELL @ 4983.0ft (Original Well Elev)

PETROLEUM DEVELOPMENT CORP Weld County CO



Reichert Pad Sec.29-T4N-R67W
 Reichert 29PD
 Plan #2 (8-26-09)
 16:07, August 26 2009



Azimuths to True North
 Magnetic North: 9.18°
 Magnetic Field
 Strength: 53291.5nT
 Dip Angle: 67.01°
 Date: 5/12/2009
 Model: IGRF200510

WELLBORE TARGET DETAILS (LAT/LONG)

Name	TVD	+N/-S	+E/-W	Latitude	Longitude	Shape
DRILL TARGET 1319'FSL, 2436'FEL	5500.0	-1098.0	-122.7	40° 16' 49.749 N	104° 54' 50.076 W	Point
PERMIT TARGET BHL 1319'FSL, 2478'FEL	6000.0	-1098.0	-164.7	40° 16' 49.750 N	104° 54' 50.617 W	Point
HARDLINE 75'W OF BHL	7500.0	-1198.0	-197.7	40° 16' 48.761 N	104° 54' 51.043 W	Polygon

SECTION DETAILS

Sec	MD	Inc	Azi	TVD	+N/-S	+E/-W	DLeg	TFace	VSec	Target
1	0.0	0.00	0.00	0.0	0.0	0.0	0.00	0.00	0.0	
2	600.0	0.00	0.00	600.0	0.0	0.0	0.00	0.00	0.0	
3	1345.3	14.91	186.38	1336.9	-95.8	-10.7	2.00	186.38	96.4	
4	4890.7	14.91	186.38	4763.1	-1002.2	-112.0	0.00	0.00	1008.4	
5	5636.1	0.00	0.00	5500.0	-1098.0	-122.7	2.00	180.00	1104.9	DRILL TARGET 1319'FSL, 2436'FEL
6	7636.1	0.00	0.00	7500.0	-1098.0	-122.7	0.00	0.00	1104.9	