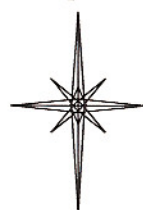


1930  
GLO BC  
W.C.

**R. 95 W.**

N



SCALE 1" = 1000'

**T. 8 S.**

**SHL LATITUDE (NAD 83)**

NORTH 39.381705 DEG.

**SHL LONGITUDE (NAD 83)**

WEST 108.026250 DEG.

**SHL NORTHING (NAD 27)**

573836.04

**SHL EASTING (NAD 27)**

1286185.03

**BASIS OF DATUM**

SPCS CO CENTRAL NAD 27,  
BASED ON NGS TRIG. STATION  
'FABER'

**BASIS OF BEARING**

THE BASIS OF BEARINGS FOR  
THIS SURVEY IS REFERENCED  
TO THE WEST LINE OF THE NW $\frac{1}{4}$   
OF SECTION 8, BEING  
MONUMENTED AS SHOWN AND  
BEARING N 1° 37' 46" E.

**NOTES**

1. GPS OPERATOR JOHN  
RICHARDSON  
OBSERVED A PDOP OF 3.9.
2. ALL GPS OBSERVATIONS ARE IN  
COMPLIANCE WITH COGCC RULE  
No.215.
3. EXISTING IMPROVEMENTS WITHIN  
400' OF LOCATION. SEE EXHIBIT 2D.
4. SURROUNDING SURFACE USE IS  
NATIVE WOODS, NON CROP &  
RANGELAND.

1929  
GLO BC

BLM LEASE  
COC 58670

**SGV FEDERAL  
6-44D**

**GRADED ELEVATION:**

**6342.8'**

BASIS OF ELEVATION: NGVD29 USGS  
SPOT ELEVATION LOCATED AT THE SE  $\frac{1}{4}$ ,  
SECTION 7, T 8 S, R 95 W,  
ELEVATION: 6626'

1929  
GLO BC

S 88°58'33" E

2600.40'

CALC.

S 88°58'33" E

2600.40'

CALC.

1000

500

0

1000

2000

SCALE FEET

**SURVEYOR'S STATEMENT**

I, RICHARD A. BULLEN JR., AN EMPLOYEE AND AGENT ON BEHALF OF D.R. GRIFFIN & ASSOCIATES, INC. STATE THE PLAT HEREON IS A CORRECT REPRESENTATION OF A SURVEY MADE UNDER MY SUPERVISION ON DECEMBER 15, 2008 OF THE SHOWN SGV FEDERAL 6-44D AS STAKED ON THE GROUND AS SHOWN ON THE PLAT.

**LEGEND**

- ◆ WELL LOCATION
- BOTTOM HOLE LOC. (APPROX)
- FOUND MONUMENT
- ▲ PREVIOUSLY FOUND MONUMENT
- ⊙ SET MONUMENT
- L DENOTES 90° TIE

**SGV 8D PAD**



(307) 362-5028

1414 ELK ST., ROCK SPRINGS, WY 82901

DRAWN: 3/06/09 - WWG

SCALE: 1" = 1000'

REVISED: 12/4/09 - RCR

DRG JOB No. 13846

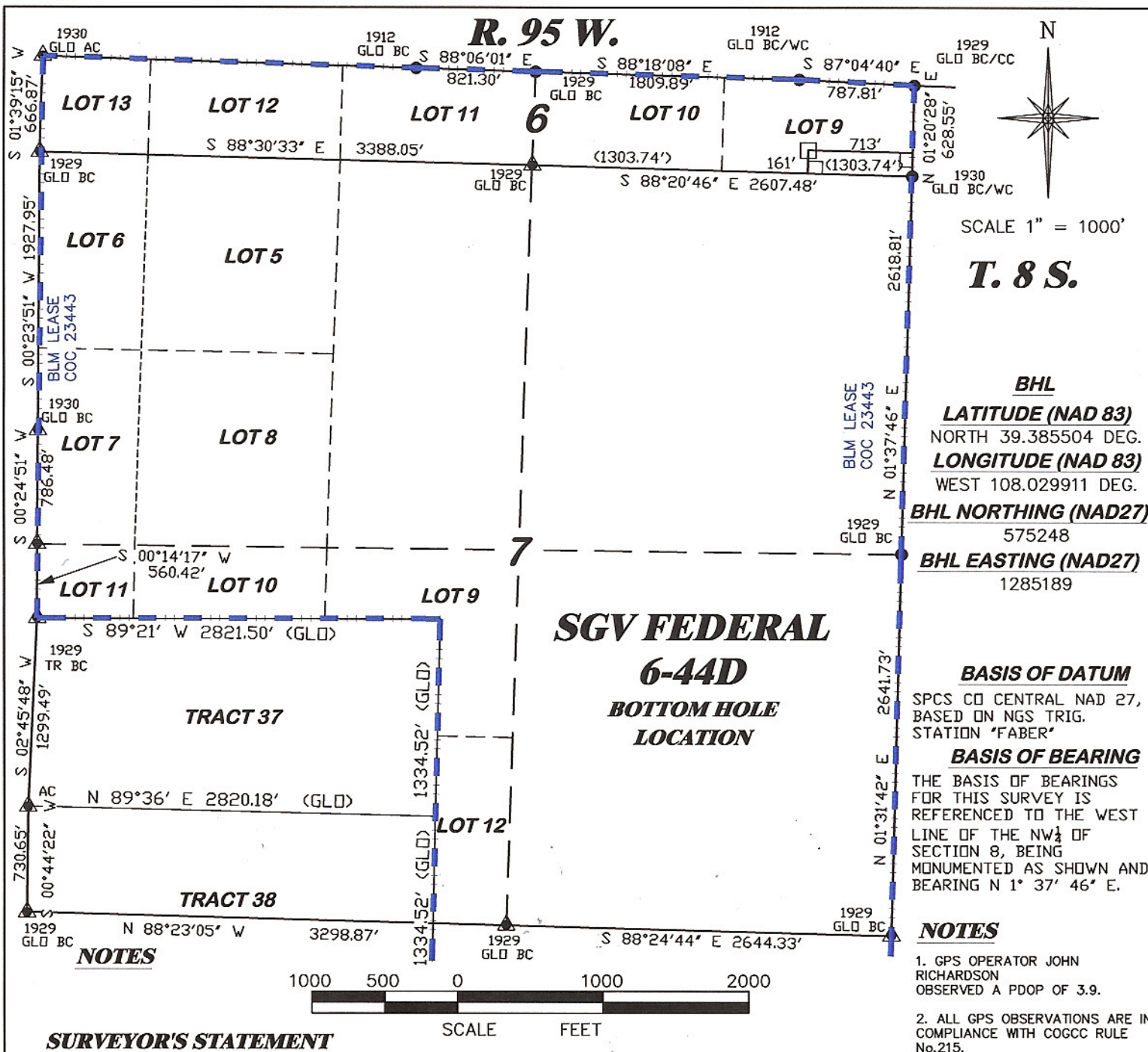
Add Q/Q of Section & Dimensions

EXHIBIT 1

**PLAT OF DRILLING LOCATION  
FOR NOBLE ENERGY, INC.  
SHL IN NW1/4 OF NW1/4 OF SECTION 8**

**1226' F/NL & 322' F/WL, SECTION 8,  
T. 8 S., R. 95 W., 6th P.M.  
GARFIELD COUNTY, COLORADO**



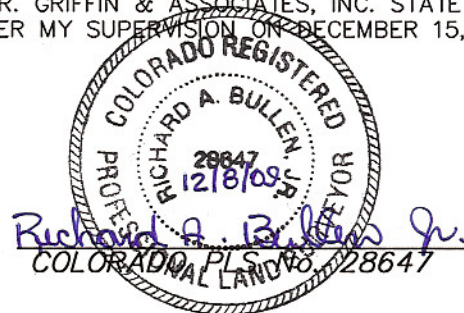


I, RICHARD A. BULLEN JR., AN EMPLOYEE AND AGENT ON BEHALF OF D.R. GRIFFIN & ASSOCIATES, INC. STATE THE PLAT HEREON IS A CORRECT REPRESENTATION OF A SURVEY MADE UNDER MY SUPERVISION ON DECEMBER 15, 2008 OF THE SHOWN SGV FEDERAL 6-44D BOTTOM HOLE LOCATION.

**LEGEND**

- ◆ WELL LOCATION
- BOTTOM HOLE LOC. (APPROX)
- FOUND MONUMENT
- ▲ PREVIOUSLY FOUND MONUMENT
- L DENOTES 90° TIE

**SGV 8D PAD**



 <b>DRG RIFFIN &amp; ASSOCIATES, INC.</b> (307) 362-5028 1414 ELK ST., ROCK SPRINGS, WY 82901	
<b>DRAWN:</b> 3/06/09 - WWG	<b>SCALE:</b> 1" = 1000'
<b>REVISED:</b> 12/4/09 - RCR	<b>DRG JOB No.</b> 13846
<b>Add Q/Q of Section &amp; Dimensions</b>	<b>EXHIBIT 1</b>

**PLAT OF BOTTOM HOLE LOCATION  
FOR NOBLE ENERGY, INC.  
SHL IN NW1/4 OF NW1/4 OF SECTION 6,  
T. 8 S., R. 95 W., 6th P.M.  
GARFIELD COUNTY, COLORADO**