

1930
GLD BC
W.C.

R. 95 W.

N



SCALE 1" = 1000'

T. 8 S.

SHL LATITUDE (NAD 83)

NORTH 39.381674 DEG.

SHL LONGITUDE (NAD 83)

WEST 108.026348 DEG.

SHL NORTHING (NAD 27)

573825.49

SHL EASTING (NAD 27)

1286156.95

BASIS OF DATUM

SPCS CO CENTRAL NAD 27,
BASED ON NGS TRIG. STATION
"FABER"

BASIS OF BEARING

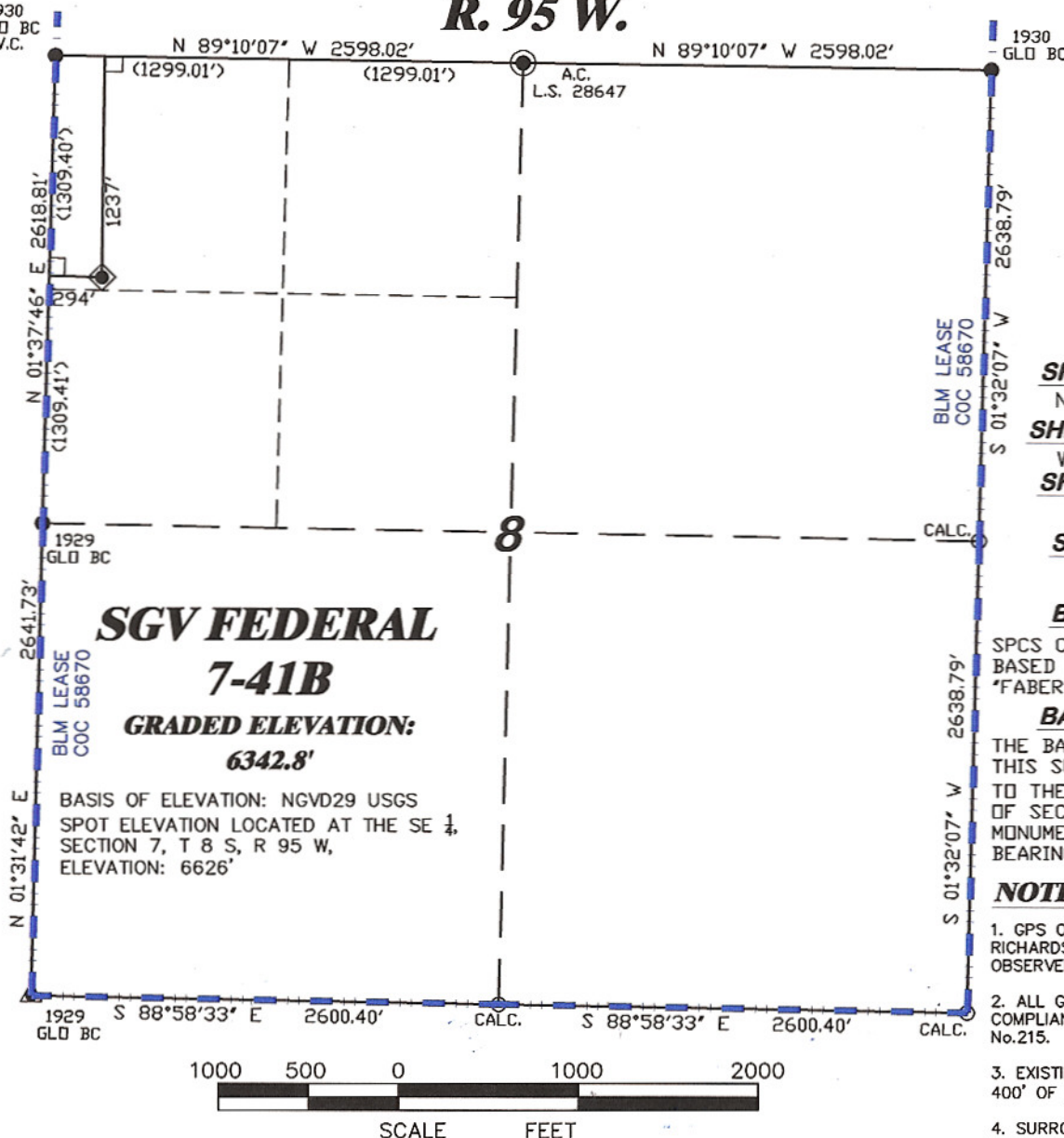
THE BASIS OF BEARINGS FOR
THIS SURVEY IS REFERENCED
TO THE WEST LINE OF THE NW $\frac{1}{4}$
OF SECTION 8, BEING
MONUMENTED AS SHOWN AND
BEARING N 1° 37' 46" E.

NOTES

1. GPS OPERATOR JOHN
RICHARDSON
OBSERVED A PDOP OF 3.9.
2. ALL GPS OBSERVATIONS ARE IN
COMPLIANCE WITH COGCC RULE
No. 215.
3. EXISTING IMPROVEMENTS WITHIN
400' OF LOCATION. SEE EXHIBIT 2D.
4. SURROUNDING SURFACE USE IS
NATIVE WOODS, NON CROP &
RANGELAND.

**SGV FEDERAL
7-41B**
**GRADED ELEVATION:
6342.8'**

BASIS OF ELEVATION: NGVD29 USGS
SPOT ELEVATION LOCATED AT THE SE $\frac{1}{4}$
SECTION 7, T 8 S, R 95 W,
ELEVATION: 6626'



SURVEYOR'S STATEMENT

I, RICHARD A. BULLEN JR., AN EMPLOYEE AND AGENT ON BEHALF OF D.R. GRIFFIN & ASSOCIATES, INC. STATE THE PLAT HEREON IS A CORRECT REPRESENTATION OF A SURVEY MADE UNDER MY SUPERVISION ON DECEMBER 15, 2008 OF THE SHOWN SGV FEDERAL 7-41B AS STAKED ON THE GROUND AS SHOWN ON THE PLAT.

LEGEND

- ◆ WELL LOCATION
- BOTTOM HOLE LOC. (APPROX)
- FOUND MONUMENT
- ▲ PREVIOUSLY FOUND MONUMENT
- ◎ SET MONUMENT
- L DENOTES 90° TIE



SGV 8D PAD

DRG RIFFIN & ASSOCIATES, INC.
(307) 362-5028 1414 ELK ST., ROCK SPRINGS, WY 82901

DRAWN: 3/06/09 - WWG

SCALE: 1" = 1000'

REVISED: 12/4/09 - RCR

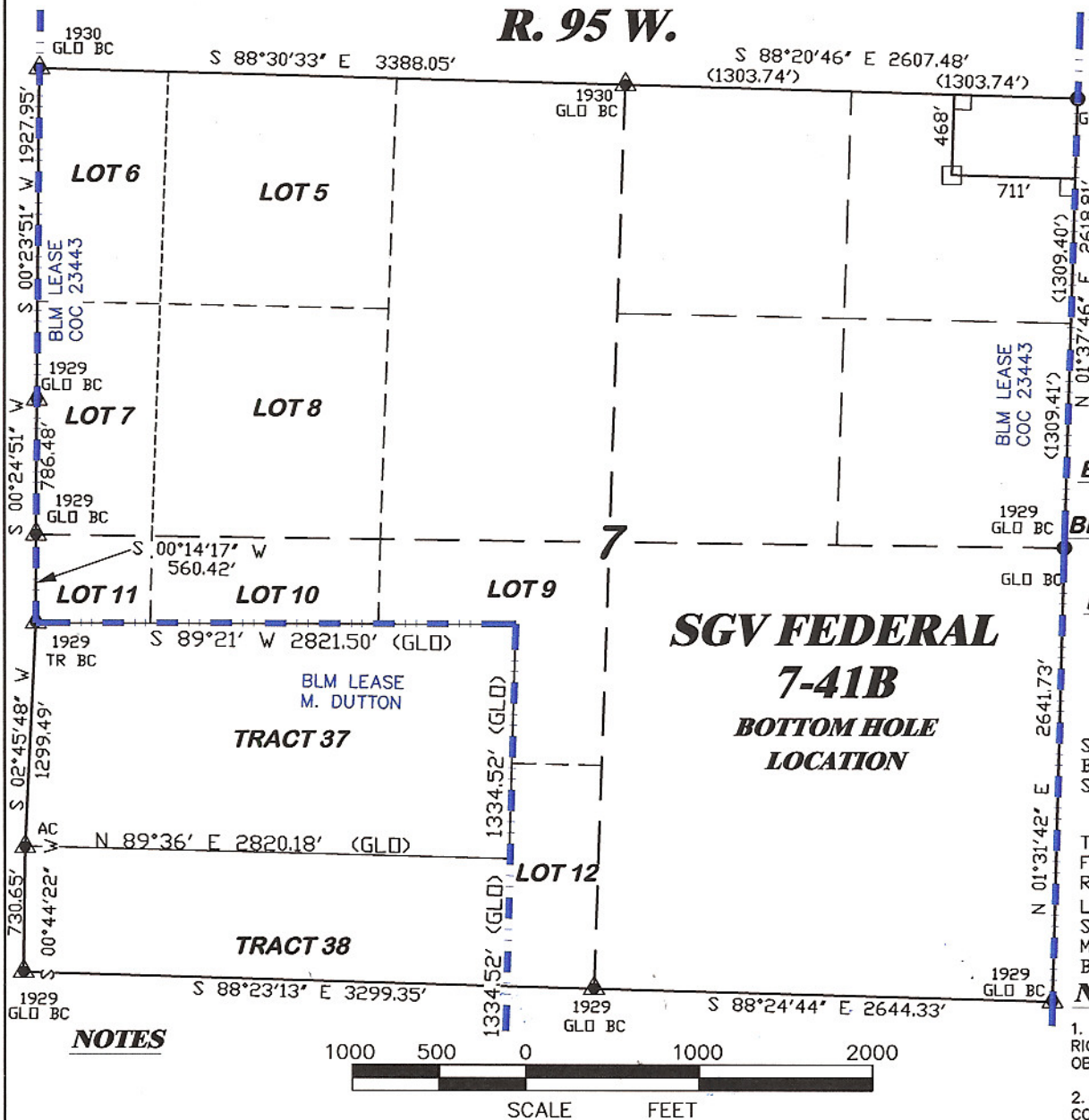
DRG JOB No. 13846

Add Q/Q of Section & Dimensions

EXHIBIT 1

**PLAT OF DRILLING LOCATION
FOR NOBLE ENERGY, INC.
SHL IN NW $\frac{1}{4}$ OF NW $\frac{1}{4}$ OF SECTION 8,
1237' F/NL & 294' F/WL, SECTION 8,
T. 8 S., R. 95 W., 6th P.M.
GARFIELD COUNTY, COLORADO**

R. 95 W.



SCALE 1" = 1000'

T. 8 S.

BHL LATITUDE (NAD 83)

NORTH 39.383776 DEG.

BHL LONGITUDE (NAD 83)

WEST 108.029902 DEG.

BHL NORTHING (NAD27)

574619

BHL EASTING (NAD27)

1285174

BASIS OF DATUM

SPCS CO CENTRAL NAD 27,
BASED ON NGS TRIG.
STATION 'FABER'

BASIS OF BEARING

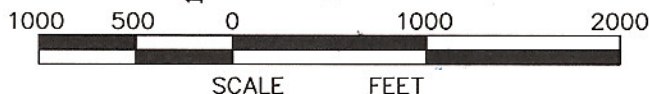
THE BASIS OF BEARINGS
FOR THIS SURVEY IS
REFERENCED TO THE WEST
LINE OF THE NW $\frac{1}{4}$ OF
SECTION 8, BEING
MONUMENTED AS SHOWN AND
BEARING N 1° 37' 46" E.

NOTES

1. GPS OPERATOR JOHN
RICHARDSON
OBSERVED A PDOP OF 3.9.

2. ALL GPS OBSERVATIONS ARE IN
COMPLIANCE WITH COGCC RULE
No.215.

NOTES



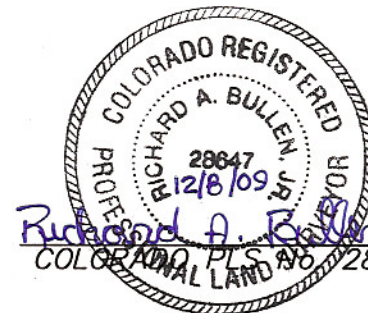
SURVEYOR'S STATEMENT

I, RICHARD A. BULLEN JR., AN EMPLOYEE AND AGENT ON BEHALF OF D.R. GRIFFIN & ASSOCIATES, INC. STATE THE PLAT HEREON IS A CORRECT REPRESENTATION OF A SURVEY MADE UNDER MY SUPERVISION ON DECEMBER 15, 2008 OF THE SHOWN SGV FEDERAL 7-41B BOTTOM HOLE LOCATION.

LEGEND

- ◆ WELL LOCATION
- BOTTOM HOLE LOC. (APPROX)
- FOUND MONUMENT
- ▲ PREVIOUSLY FOUND MONUMENT
- L DENOTES 90° TIE

SGV 8D PAD



DRG RIFFIN & ASSOCIATES, INC.

(307) 362-5028

1414 ELK ST., ROCK SPRINGS, WY 82901

DRAWN: 3/06/09 - WWG

SCALE: 1" = 1000'

REVISED: 12/4/09 - RCR

DRG JOB No. 13846

Add Q/Q of Section & Dimensions

EXHIBIT 1

**PLAT OF BOTTOM HOLE LOCATION
FOR NOBLE ENERGY, INC.
SHL IN NW1/4 OF NW1/4 OF SECTION 8**

**468' F/NL & 711' F/EL, SECTION 7,
T. 8 S., R. 95 W., 6th P.M.
GARFIELD COUNTY, COLORADO**