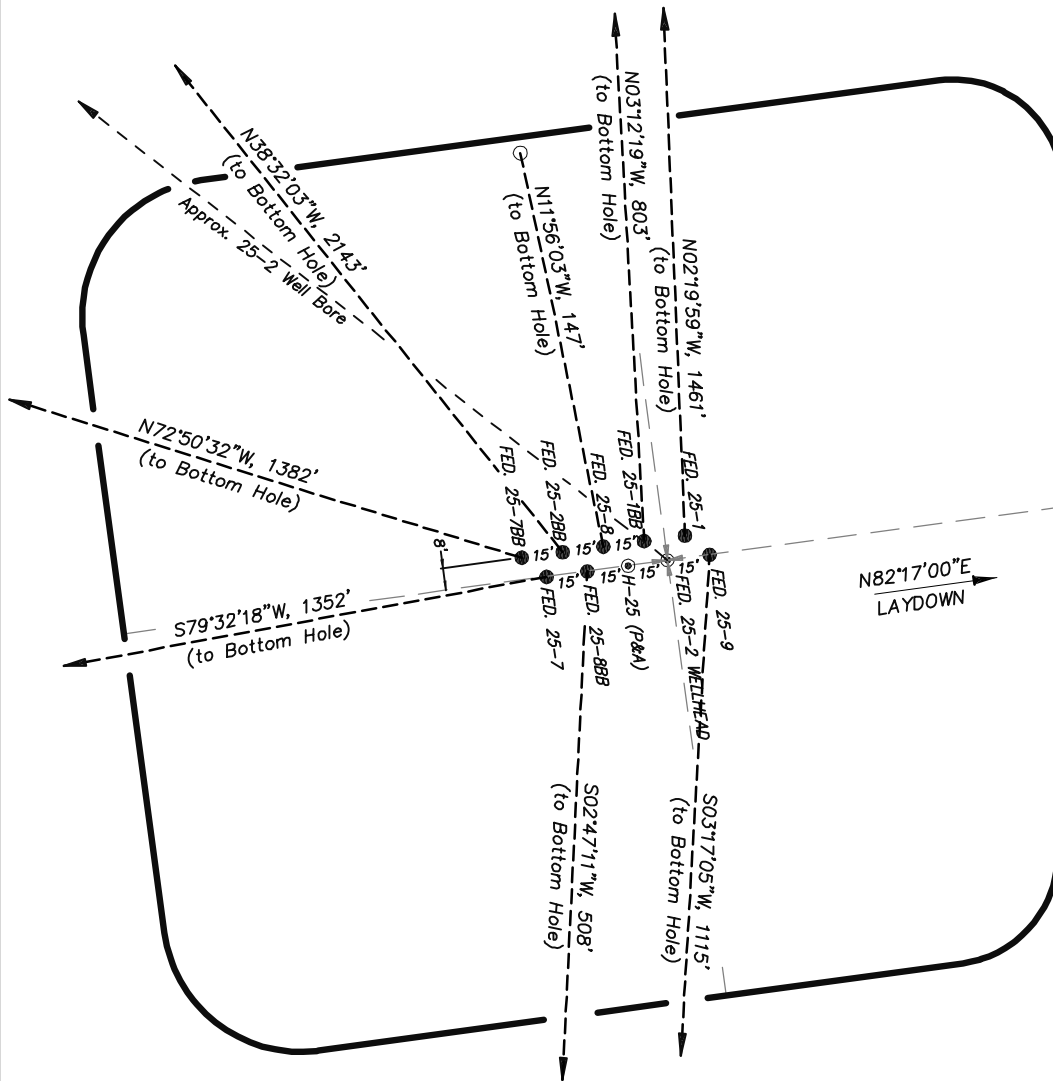


EnCana Oil & Gas (USA) Inc.
Well Pad PH-25
Section 25, T7S, R96W, 6th P.M.
WELL PAD INTERFERENCE PLAT



TOP HOLE FOOTAGES

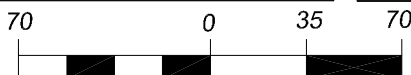
FEDERAL 25-9 (PH-25)
 1958' FNL & 591' FEL
 FEDERAL 25-8BB (PH-25)
 1963' FNL & 636' FEL
 FEDERAL 25-7 (PH-25)
 1965' FNL & 650' FEL
 FEDERAL 25-1 (PH-25)
 1951' FNL & 600' FEL
 FEDERAL 25-1BB (PH-25)
 1952' FNL & 615' FEL
 FEDERAL 25-8 (PH-25)
 1954' FNL & 630' FEL
 FEDERAL 25-2BB (PH-25)
 1956' FNL & 644' FEL
 FEDERAL 25-7BB (PH-25)
 1957' FNL & 659' FEL

BOTTOM HOLE FOOTAGES

FEDERAL 25-9 (PH-25)
 2150' FSL & 660' FEL
 FEDERAL 25-8BB (PH-25)
 2470' FNL & 660' FEL
 FEDERAL 25-7 (PH-25)
 2180' FNL & 1980' FEL
 FEDERAL 25-1 (PH-25)
 490' FNL & 660' FEL
 FEDERAL 25-1BB (PH-25)
 1150' FNL & 660' FEL
 FEDERAL 25-8 (PH-25)
 1810' FNL & 660' FEL
 FEDERAL 25-2BB (PH-25)
 250' FNL & 1980' FEL
 FEDERAL 25-7BB (PH-25)
 1520' FNL & 1980' FEL

RELATIVE COORDINATES From top hole to bottom hole		
WELL	NORTH	EAST
25-9	-1113	-64
25-8BB	-507	-25
25-7	-245	-1330
25-1	1460	-59
25-1BB	802	-45
25-8	144	-30
25-2BB	1676	-1335
25-7BB	408	-1320

LATITUDE & LONGITUDE Surface position of Wellheads (NAD 83)		
WELL	LATITUDE	LONGITUDE
25-9	39.41044°	108.05078°
25-8BB	39.41042°	108.05093°
25-7	39.41041°	108.05099°
25-1	39.41046°	108.05081°
25-1BB	39.41045°	108.05086°
25-8	39.41044°	108.05091°
25-2BB	39.41044°	108.05097°
25-7BB	39.41043°	108.05102°



(SCALE IN FEET)

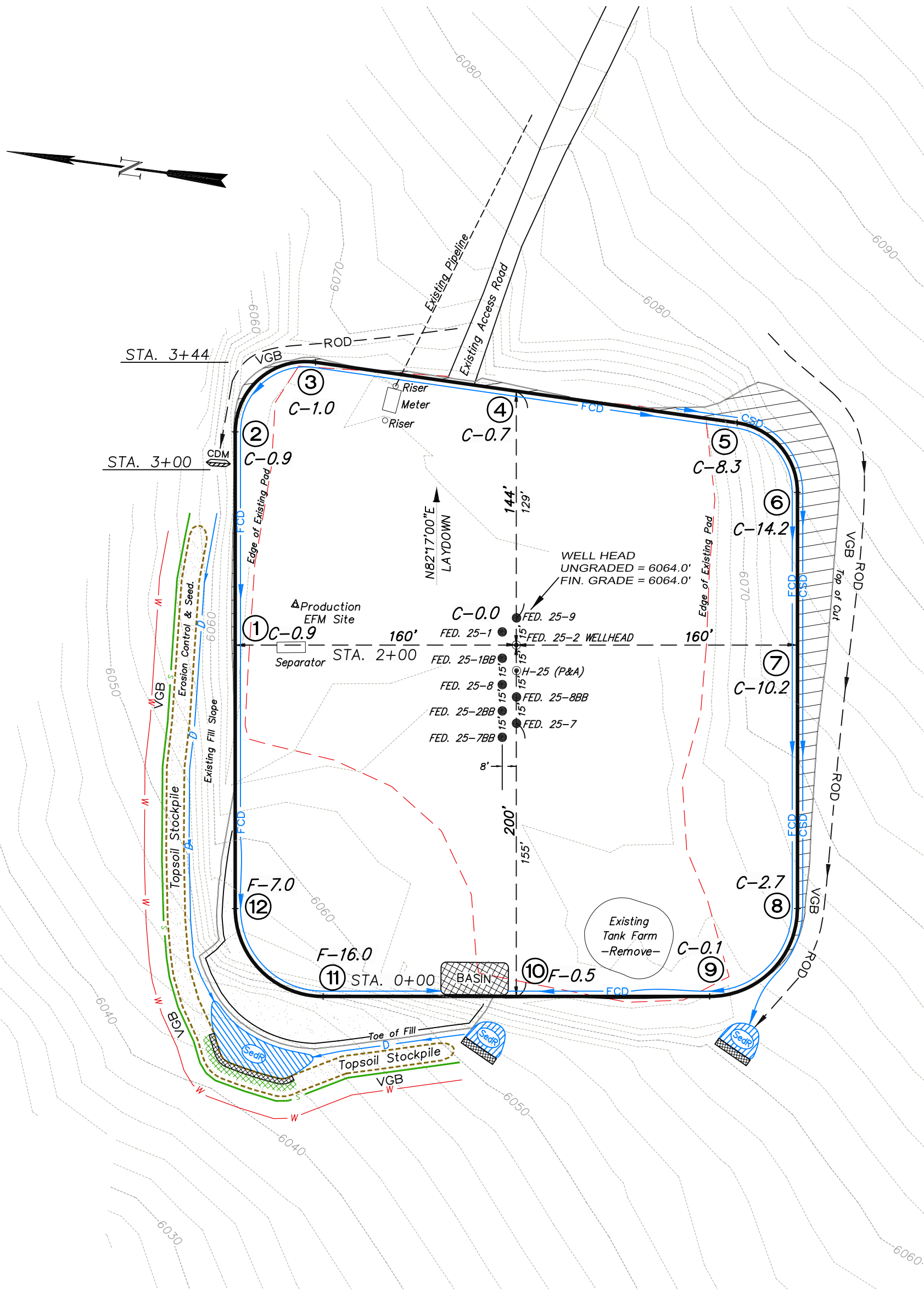
906 Main Street
 Evanston, Wyoming 82930
 Phone No. (307) 789-4545



Interference Plat		Scale: 1" = 70'	SHEET 2 OF 10
Project No.	09-04-04	Date Surveyed: 1/14/09	
Date Drawn: 8/26/09		Latest Revision Date:	

EnCana Oil & Gas (USA) Inc.
PH-25 Well Pad

SE1/4 NE1/4, SECTION 25, T 7 S, R 96 W, 6th P.M.
WELL PAD LAYOUT



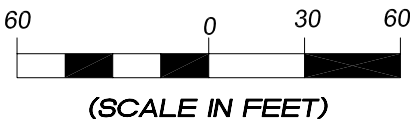
Total Surface Disturbance = 3.78 Acres
(See Sheet 4 for Details)

- NOTES;
- (1) Slope Track and/or Terrace all Slopes and Piles
 - (2) Erosion Control & Seed Topsoil
 - (3) Erosion Control & Seed Outside
 - (4) Slope away from Substructure Areas 1% to 3% to Flow Control

- LEGEND
- SLASH
 - ST = SEDIMENT TRAP
 - SedR = SEDIMENT RESERVOIR
 - R.O.D. = RUN-ON DIVERSION
 - PERIMETER CONTROL (WATTLES)
 - CSD = CUT SLOPE DIVERSION (BERM TOE OF CUT SLOPE)
 - D = FILL DIVERSION TO SEDIMENT TRAP
 - VGB = VEGETATION BUFFER (UNDISTURBED LAND INSIDE PC)
 - FCD = FLOW CONTROL DITCH
 - PARI = PAD/ACCESS ROAD INTERFACE
 - LEVEL SPREADER
 - TOE BERM (PLACED AT TOE OF ALL FILL SLOPES/STOCKPILES)
 - TOPSOIL BERM
 - SEED, ECB & FLEX
 - SEED



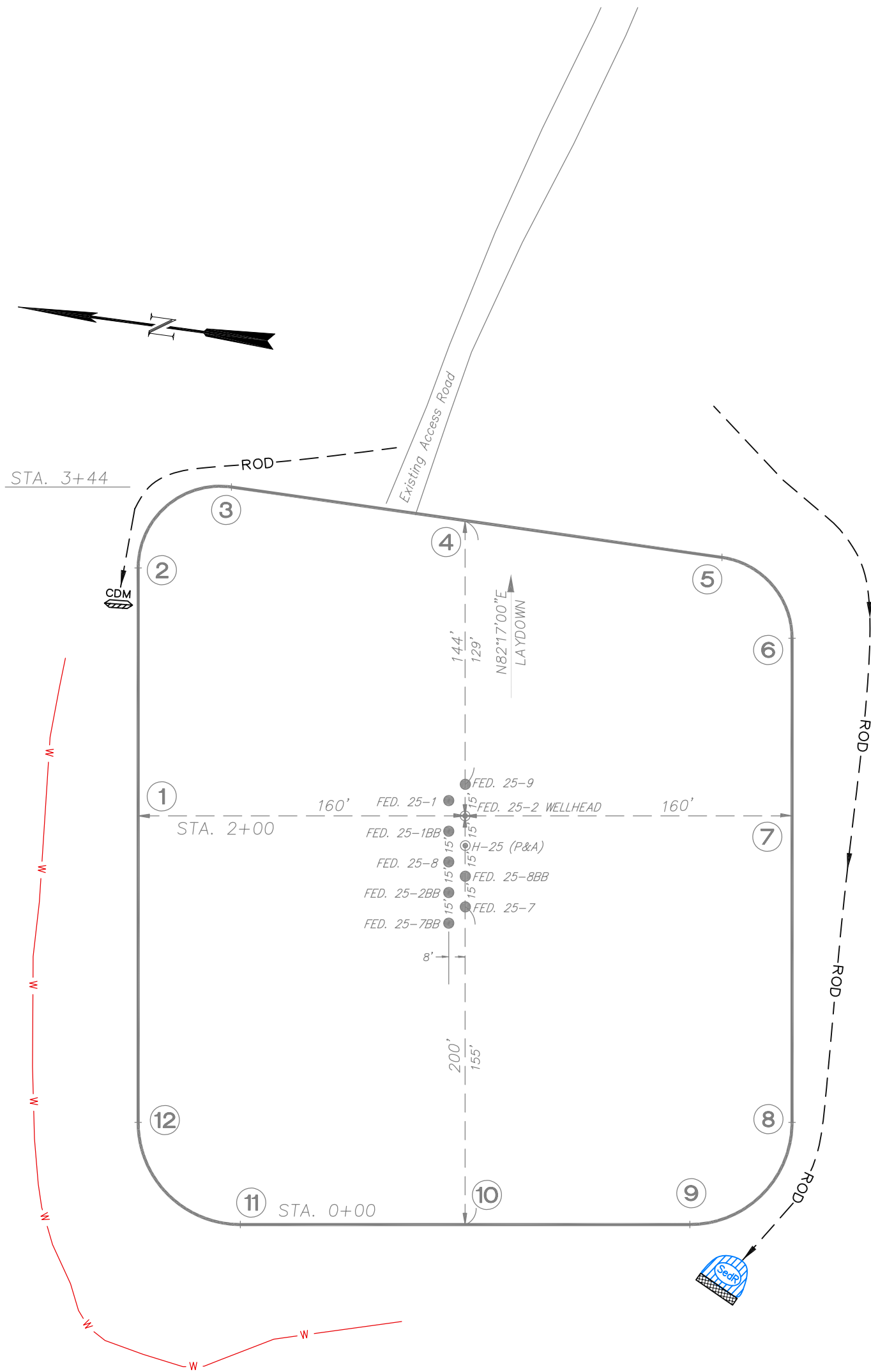
906 Main Street
Evanston, Wyoming 82930
Phone No. (307) 789-4545



Well Pad Layout		Scale: 1" = 60'	SHEET 3 OF 10
Project No.	09-04-04	Date Surveyed: 1/14/09	
Date	8/14/09	Latest Revision	
Drawn:		Date:	

EnCana Oil & Gas (USA) Inc.
PH-25 Well Pad

SE1/4 NE1/4, SECTION 25, T 7 S, R 96 W, 6th P.M.
PRE-CONSTRUCTION PLAT



Total Surface Disturbance = 3.78 Acres
(See Sheet 4 for Details)

- NOTES;
- (1) Slope Track and/or Terrace all Slopes and Piles
 - (2) Erosion Control & Seed Topsoil
 - (3) Erosion Control & Seed Outside
 - (4) Slope away from Substructure Areas 1% to 3% to Flow Control

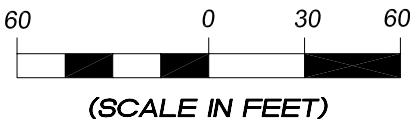
- LEGEND
- S— = SLASH
 - ST = SEDIMENT TRAP
 - SedR = SEDIMENT RESERVOIR
 - R.O.D. = RUN-ON DIVERSION
 - W— = PERIMETER CONTROL (WATTLES)
 - CSD = CUT SLOPE DIVERSION (BERM TOE OF CUT SLOPE)
 - D = FILL DIVERSION TO SEDIMENT TRAP
 - VGB = VEGETATION BUFFER (UNDISTURBED LAND INSIDE PC)
 - FCD = FLOW CONTROL DITCH
 - PARI = PAD/ACCESS ROAD INTERFACE
 - ▨ = LEVEL SPREADER
 - = TOE BERM (PLACED AT TOE OF ALL FILL SLOPES/STOCKPILES)
 - = TOPSOIL BERM
 - ▨ = SEED, ECB & FLEX
 - ▨ = SEED

PRE-CONSTRUCTION PHASE COMPLETE,
AUTHORIZATION TO CONTINUE
CONSTRUCTION.

SIGNATURE: _____



906 Main Street
Evanston, Wyoming 82930
Phone No. (307) 789-4545

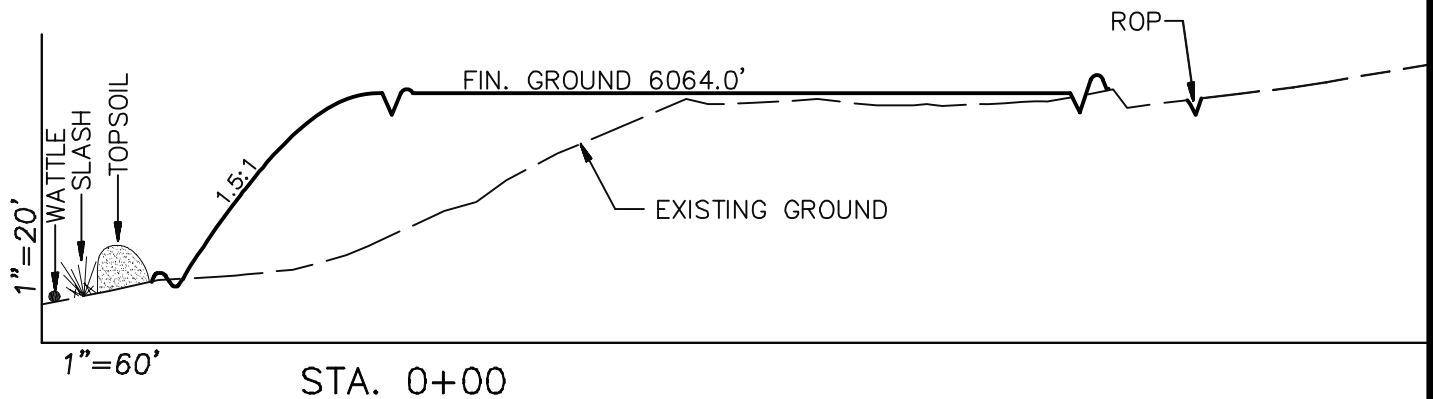
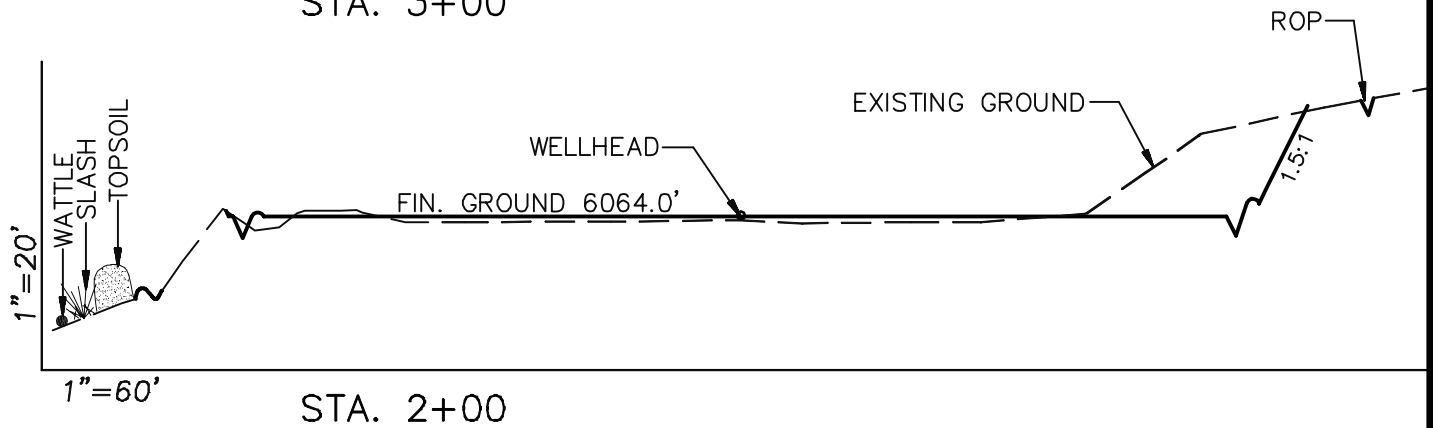
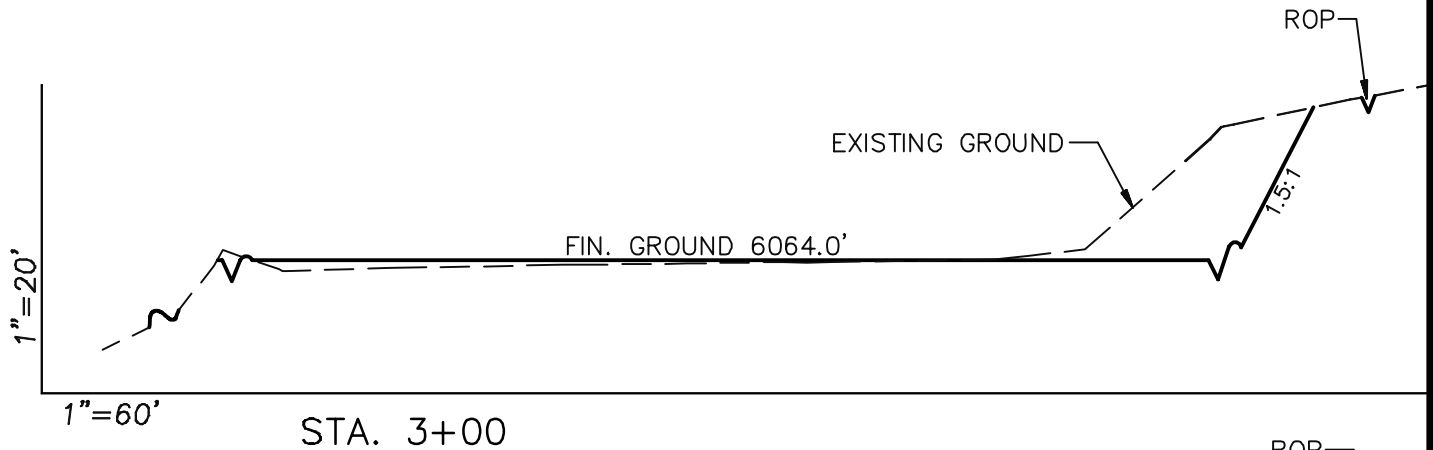


Pre-Construction		Scale: 1" = 60'	SHEET 3a OF 10
Project No.	09-04-04	Date Surveyed: 1/14/09	
Date Drawn: 8/14/09		Latest Revision Date:	

EnCana Oil & Gas (USA) Inc.

Well Pad PH-25

CROSS SECTIONS



SURFACE DISTURBANCE (IN ACRES)

Well Pad	2.5
Side Slopes	0.25
Topsoil & Waste Material	1.03
TOTAL	3.78

NOTE:
ALL CUT AND FILL
SLOPES ARE AT 1.5:1
UNLESS OTHERWISE
NOTED.

EARTHWORK QUANTITIES

(in Cubic Yards w/ 0% shrink/swell)

ITEM	CUT	FILL	6" TOPSOIL	EXCESS
PAD	3400	3234	Topsoil not included in Excavation	166
PIT	0	0		0
TOTALS	3400	3234	1162	166

Cross Sections

Project No. 09-04-04
Date Drawn: 8/26/09

Scale: As Shown

Date Surveyed: 1/14/09
Latest Revision
Date:

SHEET

4
OF 10

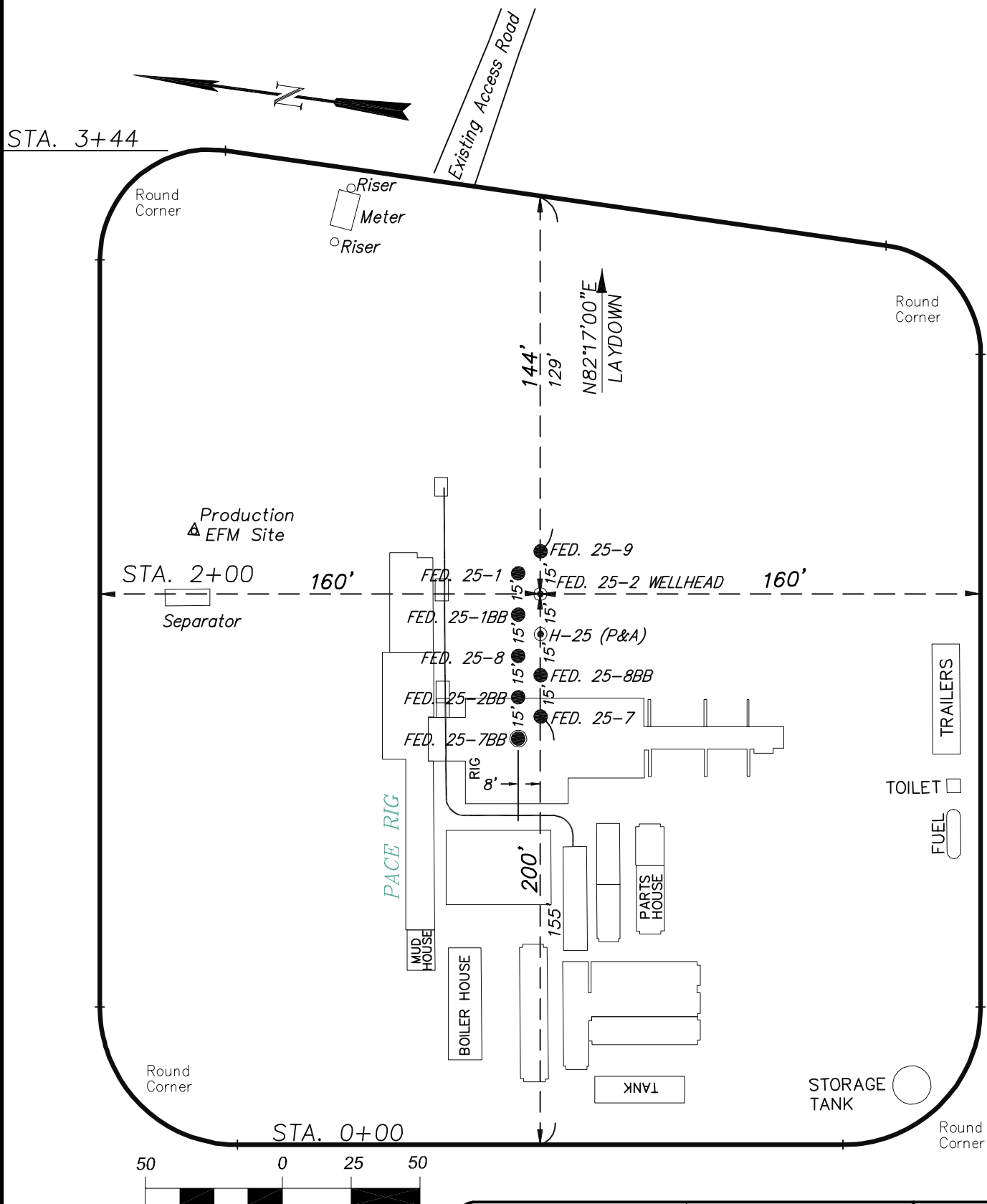


906 Main Street
Evanston, Wyoming 82930
Phone No. (307) 789-4545

EnCana Oil & Gas (USA) Inc.

Well Pad PH-25

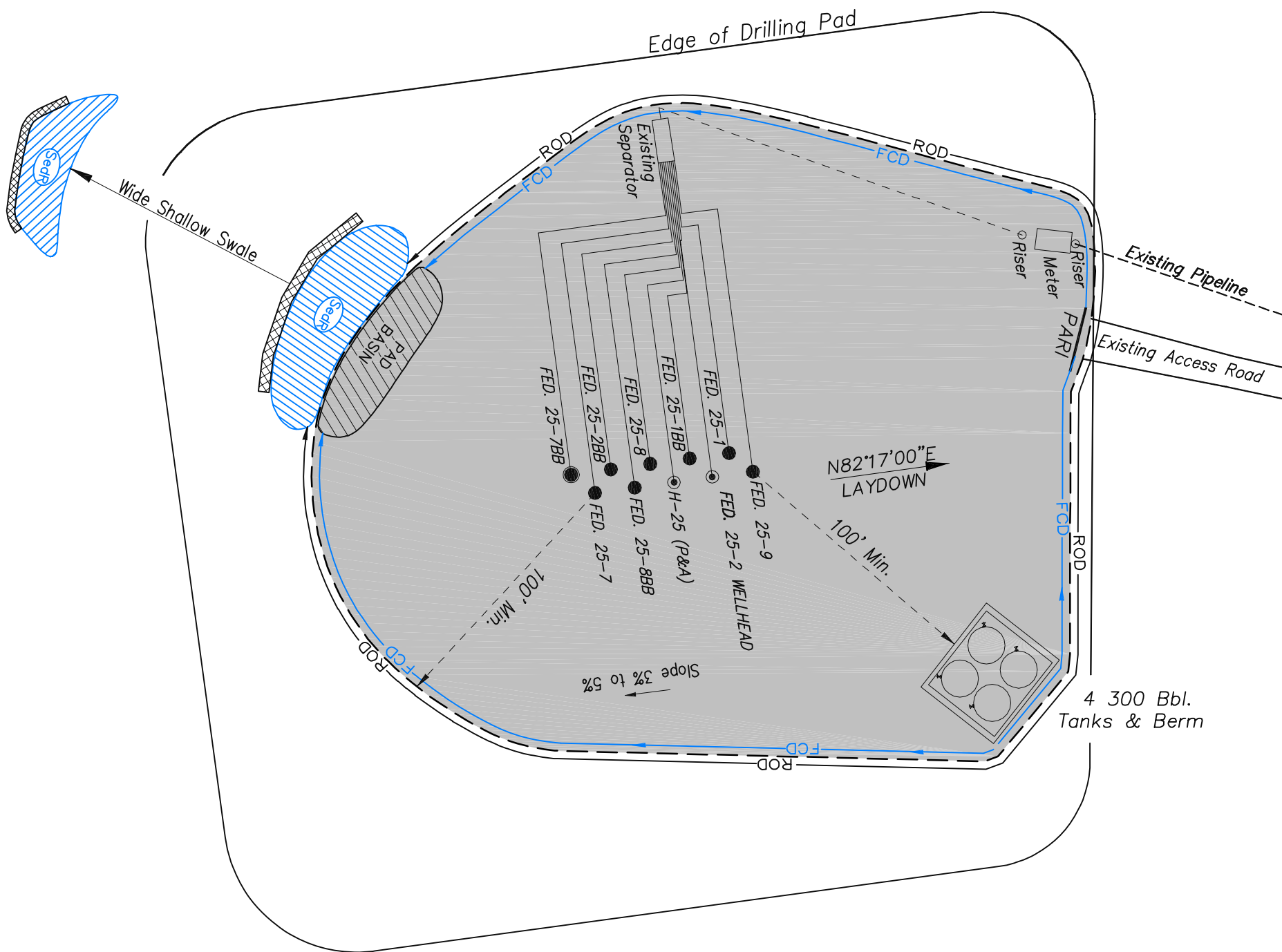
TYPICAL RIG LAYOUT



906 Main Street
Evanston, Wyoming 82930
Phone No. (307) 789-4545

Rig Layout		Scale: 1" = 50'	SHEET 5 OF 10
Project No.	09-04-04	Date Surveyed: 1/14/09	
Date	8/14/09	Latest Revision	
Drawn:		Date:	

EnCana Oil & Gas (USA) Inc.
PH-25 Well Pad
PRODUCTION SCHEMATIC



- NOTES:
1. Set Tanks High so pad Entrance & Tank Area Can Drain to Pad Basin
 2. Gravel Pad 75' from Wells & Around Tanks and Separators
 3. Pad Drains to Pad Basin at a 3% to 5% slope
 4. BMP Selection and Position may change Depending on Actual Conditions Encountered During the Construction Process

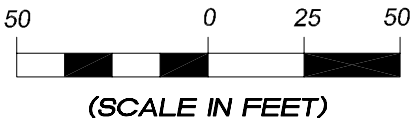
NOTE:
Actual Equipment Layout and Reclaimed Pad Surface Area May Change due to Production Requirements or Site Conditions.

ESTIMATED AREAS
RECLAIMED AREA: 2.41 ACRES
UNRECLAIMED AREA: 1.37 ACRES

- LEGEND
- SLASH
 - ST = SEDIMENT TRAP
 - SedR = SEDIMENT RESERVOIR
 - R.O.D. = RUN-ON DIVERSION
 - W = PERIMETER CONTROL (WATTLES)
 - CSD = CUT SLOPE DIVERSION (BERM TOE OF CUT SLOPE)
 - D = FILL DIVERSION TO SEDIMENT TRAP
 - VGB = VEGETATION BUFFER (UNDISTURBED LAND INSIDE PC)
 - FCD = FLOW CONTROL DITCH
 - PARI = PAD/ACCESS ROAD INTERFACE
 - LEVEL SPREADER
 - TOE BERM (PLACED AT TOE OF ALL FILL SLOPES/STOCKPILES)
 - TOPSOIL BERM
 - SEED, ECB & FLEX
 - SEED



906 Main Street
Evanston, Wyoming 82930
Phone No. (307) 789-4545



Production Schematic		Scale: 1" = 50'	SHEET 6 OF 10
Project No.	09-04-04	Date Surveyed: 1/14/09	
Date Drawn: 8/26/09		Latest Revision Date:	



<i>Surface Disturbance</i>		Scale: 1" = 80'	SHEET 7 OF 10
Project No.	09-04-04	Date Surveyed: 1/14/09	
Date Drawn:	8/14/09	Latest Revision Date:	