



ENCANA OIL & GAS (USA) INC

Location: COLORADO Slot: Slot #02 Federal 25-8BB (PH25) 1963FNL & 636FEL

Field: GARFIELD COUNTY (NEW) Well: Federal 25-8BB

Facility: SEC.25-T7S-R96W Wellbore: Federal 25-8BB PWB

Plot reference wellpath is Federal 25-8BB PWB Rev-A-0

True vertical depths are referenced to Rig on Slot #02 Federal 25-8BB (PH25) 1963FNL & 636FEL (RT)

Grid System: NAD83 / Lambert Colorado State Planes, Central Zone (502), US feet

Measured depths are referenced to Rig on Slot #02 Federal 25-8BB (PH25) 1963FNL & 636FEL (RT)

North Reference: True north

Rig on Slot #02 Federal 25-8BB (PH25) 1963FNL & 636FEL (RT) to Mean Sea Level: 6086 feet

Scale: True distance

Mean Sea Level to Mud line (Facility: SEC.25-T7S-R96W): 0 feet

Depths are in feet

Coordinates are in feet referenced to Slot

Created by: thomson on 10/16/2009

Location Information

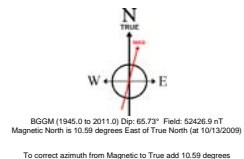
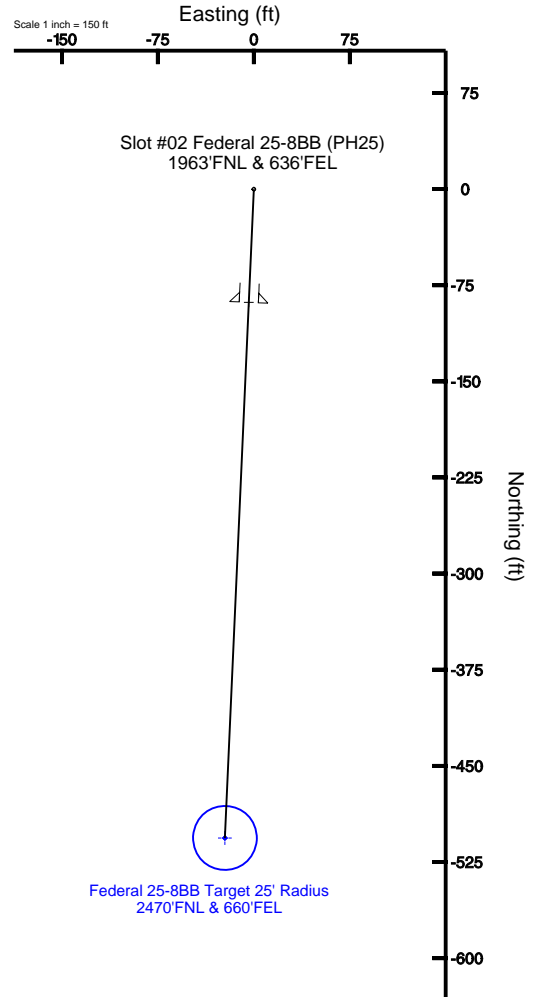
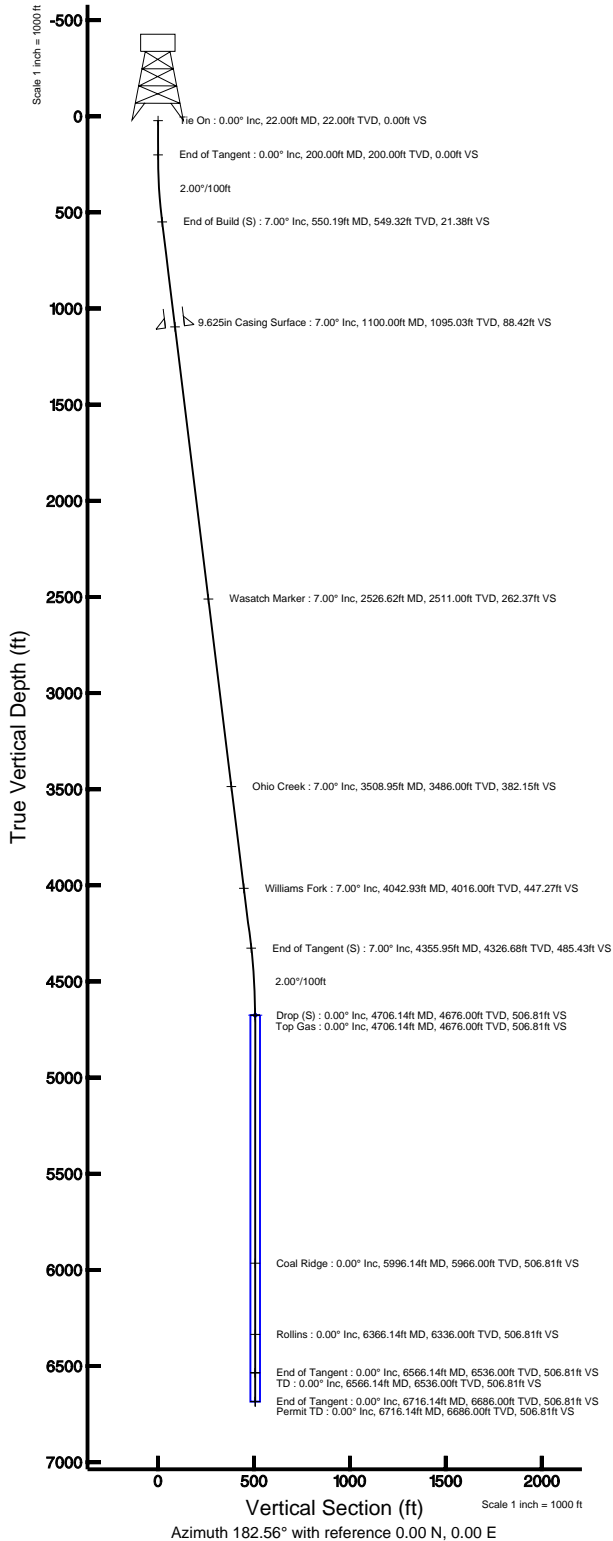
Facility Name				Grid East (USF)	Grid North (USF)	Latitude	Longitude
SEC.25-T7S-R96W				2279388.365	1584500.194	39°24'37.584"N	108°03'02.808"W
Slot	Local N (ft)	Local E (ft)	Grid East (USF)	Grid North (USF)	Latitude	Longitude	
Slot #02 Federal 25-8BB (PH25) 1963FNL & 636FEL	-7.28	-42.38	2279345.785	1584494.102	39°24'37.512"N	108°03'03.348"W	
Rig on Slot #02 Federal 25-8BB (PH25) 1963FNL & 636FEL (RT) to Mud line (Facility: SEC.25-T7S-R96W)						6086R	
Mean Sea Level to Mud line (Facility: SEC.25-T7S-R96W)						0R	
Rig on Slot #02 Federal 25-8BB (PH25) 1963FNL & 636FEL (RT) to Mean Sea Level						6086R	

Targets

Name	MD (ft)	TVD (ft)	Local N (ft)	Local E (ft)	Grid East (USF)	Grid North (USF)	Latitude	Longitude
Federal 25-8BB Target 25' Radius 2470FNL & 660FEL	4706.14	4676.00	-506.31	-22.61	2279308.96	1583988.66	39°24'32.508"N	108°03'03.636"W

Well Profile Data

Design Comment	MD (ft)	Inc (°)	Az (°)	TVD (ft)	Local N (ft)	Local E (ft)	DLS (°/100ft)	VS (ft)
Tie On	22.00	0.000	182.556	22.00	0.00	0.00	0.00	0.00
End of Tangent	200.00	0.000	182.556	200.00	0.00	0.00	0.00	0.00
End of Build (S)	550.19	7.004	182.556	549.32	-21.36	-0.95	2.00	21.38
End of Tangent (S)	4355.95	7.004	182.556	4326.68	-484.95	-21.65	0.00	485.43
Drop (S)	4706.14	0.000	182.556	4676.00	-506.31	-22.61	2.00	506.81
End of Tangent	6566.14	0.000	182.556	6536.00	-506.31	-22.61	0.00	506.81
End of Tangent	6716.14	0.000	182.556	6686.00	-506.31	-22.61	0.00	506.81





Planned Wellpath Report

Federal 25-8BB PWP Rev-A.0

Page 1 of 5



REFERENCE WELLPATH IDENTIFICATION

Operator	ENCANA OIL & GAS (USA) INC	Slot	Slot #02 Federal 25-8BB (PH25) 1963'FNL & 636'FEL
Area	COLORADO	Well	Federal 25-8BB
Field	GARFIELD COUNTY (NEW)	Wellbore	Federal 25-8BB PWB
Facility	SEC.25-T7S-R96W		

REPORT SETUP INFORMATION

Projection System	NAD83 / Lambert Colorado State Planes, Central Zone (502), US feet	Software System	WellArchitect® 2.0
North Reference	True	User	Thomsuzc
Scale	0.99995	Report Generated	10/16/2009 at 9:46:32 PM
Convergence at slot	1.61° West	Database/Source file	Denver/Federal_25-8BB_PWB.xml

WELLPATH LOCATION

	Local coordinates		Grid coordinates		Geographic coordinates	
	North[ft]	East[ft]	Easting[USft]	Northing[USft]	Latitude	Longitude
Slot Location	-7.28	-42.38	2279345.79	1584494.10	39°24'37.512"N	108°03'03.348"W
Facility Reference Pt			2279388.36	1584500.19	39°24'37.584"N	108°03'02.808"W
Field Reference Pt			3000000.01	4560984.48	47°34'21.070"N	105°30'00.000"W

WELLPATH DATUM

Calculation method	Minimum curvature	Rig on Slot #02 Federal 25-8BB (PH25) 1963'FNL & 636'FEL (RT) to Facility Vertical Datum	6086.00ft
Horizontal Reference Pt	Slot	Rig on Slot #02 Federal 25-8BB (PH25) 1963'FNL & 636'FEL (RT) to Mean Sea Level	6086.00ft
Vertical Reference Pt	Rig on Slot #02 Federal 25-8BB (PH25) 1963'FNL & 636'FEL (RT)	Facility Vertical Datum to Mud Line (Facility)	0.00ft
MD Reference Pt	Rig on Slot #02 Federal 25-8BB (PH25) 1963'FNL & 636'FEL (RT)	Section Origin	N 0.00, E 0.00 ft
Field Vertical Reference	Mean Sea Level	Section Azimuth	182.56°



Planned Wellpath Report

Federal 25-8BB PWP Rev-A.0

Page 2 of 5



REFERENCE WELLPATH IDENTIFICATION

Operator	ENCANA OIL & GAS (USA) INC	Slot	Slot #02 Federal 25-8BB (PH25) 1963'FNL & 636'FEL
Area	COLORADO	Well	Federal 25-8BB
Field	GARFIELD COUNTY (NEW)	Wellbore	Federal 25-8BB PWB
Facility	SEC.25-T7S-R96W		

WELLPATH DATA (74 stations) † = interpolated/extrapolated station

MD [ft]	Inclination [°]	Azimuth [°]	TVD [ft]	Vert Sect [ft]	North [ft]	East [ft]	DLS [%/100ft]
0.00†	0.000	182.556	0.00	0.00	0.00	0.00	0.00
22.00	0.000	182.556	22.00	0.00	0.00	0.00	0.00
122.00†	0.000	182.556	122.00	0.00	0.00	0.00	0.00
200.00	0.000	182.556	200.00	0.00	0.00	0.00	0.00
222.00†	0.440	182.556	222.00	0.08	-0.08	0.00	2.00
322.00†	2.440	182.556	321.96	2.60	-2.59	-0.12	2.00
422.00†	4.440	182.556	421.78	8.60	-8.59	-0.38	2.00
522.00†	6.440	182.556	521.32	18.08	-18.06	-0.81	2.00
550.19	7.004	182.556	549.32	21.38	-21.36	-0.95	2.00
622.00†	7.004	182.556	620.59	30.13	-30.10	-1.34	0.00
722.00†	7.004	182.556	719.85	42.33	-42.28	-1.89	0.00
822.00†	7.004	182.556	819.10	54.52	-54.47	-2.43	0.00
922.00†	7.004	182.556	918.35	66.71	-66.65	-2.98	0.00
1022.00†	7.004	182.556	1017.61	78.91	-78.83	-3.52	0.00
1122.00†	7.004	182.556	1116.86	91.10	-91.01	-4.06	0.00
1222.00†	7.004	182.556	1216.12	103.29	-103.19	-4.61	0.00
1322.00†	7.004	182.556	1315.37	115.49	-115.37	-5.15	0.00
1422.00†	7.004	182.556	1414.62	127.68	-127.55	-5.69	0.00
1522.00†	7.004	182.556	1513.88	139.88	-139.74	-6.24	0.00
1622.00†	7.004	182.556	1613.13	152.07	-151.92	-6.78	0.00
1722.00†	7.004	182.556	1712.38	164.26	-164.10	-7.33	0.00
1822.00†	7.004	182.556	1811.64	176.46	-176.28	-7.87	0.00
1922.00†	7.004	182.556	1910.89	188.65	-188.46	-8.41	0.00
2022.00†	7.004	182.556	2010.15	200.84	-200.64	-8.96	0.00
2122.00†	7.004	182.556	2109.40	213.04	-212.82	-9.50	0.00
2222.00†	7.004	182.556	2208.65	225.23	-225.01	-10.05	0.00
2322.00†	7.004	182.556	2307.91	237.42	-237.19	-10.59	0.00
2422.00†	7.004	182.556	2407.16	249.62	-249.37	-11.13	0.00
2522.00†	7.004	182.556	2506.41	261.81	-261.55	-11.68	0.00
2622.00†	7.004	182.556	2605.67	274.00	-273.73	-12.22	0.00
2722.00†	7.004	182.556	2704.92	286.20	-285.91	-12.77	0.00
2822.00†	7.004	182.556	2804.18	298.39	-298.09	-13.31	0.00
2922.00†	7.004	182.556	2903.43	310.58	-310.28	-13.85	0.00
3022.00†	7.004	182.556	3002.68	322.78	-322.46	-14.40	0.00
3122.00†	7.004	182.556	3101.94	334.97	-334.64	-14.94	0.00
3222.00†	7.004	182.556	3201.19	347.17	-346.82	-15.48	0.00
3322.00†	7.004	182.556	3300.45	359.36	-359.00	-16.03	0.00
3422.00†	7.004	182.556	3399.70	371.55	-371.18	-16.57	0.00
3522.00†	7.004	182.556	3498.95	383.75	-383.36	-17.12	0.00
3622.00†	7.004	182.556	3598.21	395.94	-395.55	-17.66	0.00
3722.00†	7.004	182.556	3697.46	408.13	-407.73	-18.20	0.00
3822.00†	7.004	182.556	3796.71	420.33	-419.91	-18.75	0.00
3922.00†	7.004	182.556	3895.97	432.52	-432.09	-19.29	0.00
4022.00†	7.004	182.556	3995.22	444.71	-444.27	-19.84	0.00
4122.00†	7.004	182.556	4094.48	456.91	-456.45	-20.38	0.00



Planned Wellpath Report

Federal 25-8BB PWP Rev-A.0

Page 3 of 5



REFERENCE WELLPATH IDENTIFICATION			
Operator	ENCANA OIL & GAS (USA) INC	Slot	Slot #02 Federal 25-8BB (PH25) 1963'FNL & 636'FEL
Area	COLORADO	Well	Federal 25-8BB
Field	GARFIELD COUNTY (NEW)	Wellbore	Federal 25-8BB PWB
Facility	SEC.25-T7S-R96W		

WELLPATH DATA (74 stations) † = interpolated/extrapolated station							
MD [ft]	Inclination [°]	Azimuth [°]	TVD [ft]	Vert Sect [ft]	North [ft]	East [ft]	DLS [°/100ft]
4222.00†	7.004	182.556	4193.73	469.10	-468.63	-20.92	0.00
4322.00†	7.004	182.556	4292.98	481.29	-480.82	-21.47	0.00
4355.95	7.004	182.556	4326.68	485.43	-484.95	-21.65	0.00
4422.00†	5.683	182.556	4392.32	492.73	-492.24	-21.98	2.00
4522.00†	3.683	182.556	4491.99	500.90	-500.40	-22.34	2.00
4622.00†	1.683	182.556	4591.87	505.58	-505.07	-22.55	2.00
4706.14	0.000	182.556	4676.00 ¹	506.81	-506.31	-22.61	2.00
4722.00†	0.000	182.556	4691.86	506.81	-506.31	-22.61	0.00
4822.00†	0.000	182.556	4791.86	506.81	-506.31	-22.61	0.00
4922.00†	0.000	182.556	4891.86	506.81	-506.31	-22.61	0.00
5022.00†	0.000	182.556	4991.86	506.81	-506.31	-22.61	0.00
5122.00†	0.000	182.556	5091.86	506.81	-506.31	-22.61	0.00
5222.00†	0.000	182.556	5191.86	506.81	-506.31	-22.61	0.00
5322.00†	0.000	182.556	5291.86	506.81	-506.31	-22.61	0.00
5422.00†	0.000	182.556	5391.86	506.81	-506.31	-22.61	0.00
5522.00†	0.000	182.556	5491.86	506.81	-506.31	-22.61	0.00
5622.00†	0.000	182.556	5591.86	506.81	-506.31	-22.61	0.00
5722.00†	0.000	182.556	5691.86	506.81	-506.31	-22.61	0.00
5822.00†	0.000	182.556	5791.86	506.81	-506.31	-22.61	0.00
5922.00†	0.000	182.556	5891.86	506.81	-506.31	-22.61	0.00
6022.00†	0.000	182.556	5991.86	506.81	-506.31	-22.61	0.00
6122.00†	0.000	182.556	6091.86	506.81	-506.31	-22.61	0.00
6222.00†	0.000	182.556	6191.86	506.81	-506.31	-22.61	0.00
6322.00†	0.000	182.556	6291.86	506.81	-506.31	-22.61	0.00
6422.00†	0.000	182.556	6391.86	506.81	-506.31	-22.61	0.00
6522.00†	0.000	182.556	6491.86	506.81	-506.31	-22.61	0.00
6566.14	0.000	182.556	6536.00	506.81	-506.31	-22.61	0.00
6622.00†	0.000	182.556	6591.86	506.81	-506.31	-22.61	0.00
6716.14	0.000	182.556	6686.00	506.81	-506.31	-22.61	0.00

HOLE & CASING SECTIONS Ref Wellbore: Federal 25-8BB PWB Ref Wellpath: Federal 25-8BB PWP Rev-A.0									
String/Diameter	Start MD [ft]	End MD [ft]	Interval [ft]	Start TVD [ft]	End TVD [ft]	Start N/S [ft]	Start E/W [ft]	End N/S [ft]	End E/W [ft]
12.25in Open Hole	22.00	1100.00	1078.00	22.00	1095.03	0.00	0.00	-88.33	-3.94
9.625in Casing Surface	22.00	1100.00	1078.00	22.00	1095.03	0.00	0.00	-88.33	-3.94



Planned Wellpath Report

Federal 25-8BB PWP Rev-A.0

Page 4 of 5



REFERENCE WELLPATH IDENTIFICATION

Operator	ENCANA OIL & GAS (USA) INC	Slot	Slot #02 Federal 25-8BB (PH25) 1963'FNL & 636'FEL
Area	COLORADO	Well	Federal 25-8BB
Field	GARFIELD COUNTY (NEW)	Wellbore	Federal 25-8BB PWB
Facility	SEC.25-T7S-R96W		

TARGETS

Name	MD [ft]	TVD [ft]	North [ft]	East [ft]	Grid East [srv ft]	Grid North [srv ft]	Latitude	Longitude	Shape
1) Federal 25-8BB Target 25' Radius 2470'FNL & 660'FEL	4706.14	4676.00	-506.31	-22.61	2279308.98	1583988.66	39°24'32.508"N	108°03'03.636"W	circle

SURVEY PROGRAM Ref Wellbore: Federal 25-8BB PWB Ref Wellpath: Federal 25-8BB PWP Rev-A.0

Start MD [ft]	End MD [ft]	Positional Uncertainty Model	Log Name/Comment	Wellbore
22.00	6716.14	MTC (Collar, post-2000) (Standard)		Federal 25-8BB PWB



Planned Wellpath Report

Federal 25-8BB PWP Rev-A.0

Page 5 of 5



REFERENCE WELLPATH IDENTIFICATION

Operator	ENCANA OIL & GAS (USA) INC	Slot	Slot #02 Federal 25-8BB (PH25) 1963'FNL & 636'FEL
Area	COLORADO	Well	Federal 25-8BB
Field	GARFIELD COUNTY (NEW)	Wellbore	Federal 25-8BB PWB
Facility	SEC.25-T7S-R96W		

WELLPATH COMMENTS

MD [ft]	Inclination [°]	Azimuth [°]	TVD [ft]	Comment
2526.62	7.004	182.556	2511.00	Wasatch Marker
3508.95	7.004	182.556	3486.00	Ohio Creek
4042.93	7.004	182.556	4016.00	Williams Fork
4706.14	0.000	182.556	4676.00	Top Gas
5996.14	0.000	182.556	5966.00	Coal Ridge
6366.14	0.000	182.556	6336.00	Rollins
6566.14	0.000	182.556	6536.00	TD
6716.14	0.000	182.556	6686.00	Permit TD