

EnCana Oil & Gas (USA) Inc.

Well Pad PH-25

Section 25, T7S, R96W, 6th P.M.

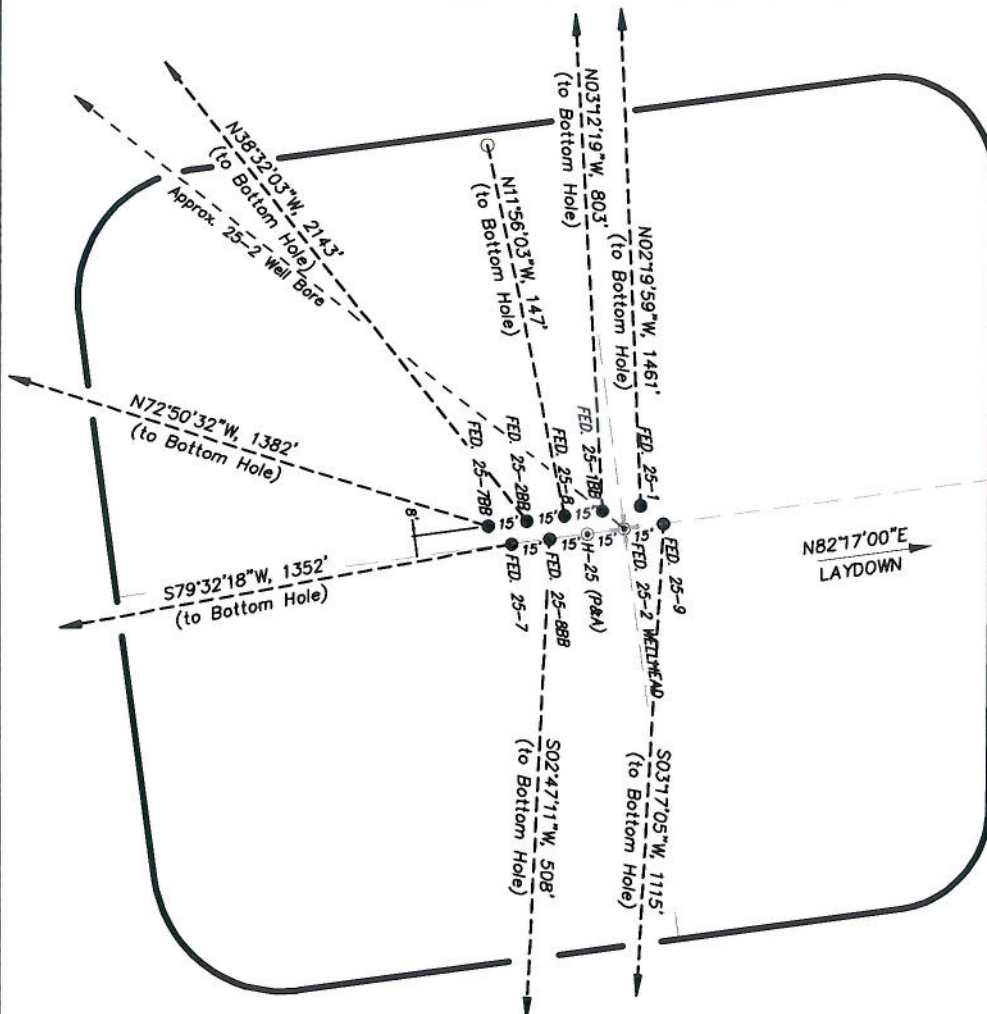
WELL PAD INTERFERENCE PLAT

TOP HOLE FOOTAGES

FEDERAL 25-9 (PH-25)
1958' FNL & 591' FEL
FEDERAL 25-8BB (PH-25)
1963' FNL & 636' FEL
FEDERAL 25-7 (PH-25)
1965' FNL & 650' FEL
FEDERAL 25-1 (PH-25)
1951' FNL & 600' FEL
FEDERAL 25-1BB (PH-25)
1952' FNL & 615' FEL
FEDERAL 25-8 (PH-25)
1954' FNL & 630' FEL
FEDERAL 25-2BB (PH-25)
1956' FNL & 644' FEL
FEDERAL 25-7BB (PH-25)
1957' FNL & 659' FEL

BOTTOM HOLE FOOTAGES

FEDERAL 25-9 (PH-25)
2150' FSL & 660' FEL
FEDERAL 25-8BB (PH-25)
2470' FNL & 660' FEL
FEDERAL 25-7 (PH-25)
2180' FNL & 1980' FEL
FEDERAL 25-1 (PH-25)
490' FNL & 660' FEL
FEDERAL 25-1BB (PH-25)
1150' FNL & 660' FEL
FEDERAL 25-8 (PH-25)
1810' FNL & 660' FEL
FEDERAL 25-2BB (PH-25)
250' FNL & 1980' FEL
FEDERAL 25-7BB (PH-25)
1520' FNL & 1980' FEL



RELATIVE COORDINATES From top hole to bottom hole

WELL	NORTH	EAST
25-9	-1113	-64
25-8BB	-507	-25
25-7	-245	-1330
25-1	1460	-59
25-1BB	802	-45
25-8	144	-30
25-2BB	1676	-1335
25-7BB	408	-1320

LATITUDE & LONGITUDE Surface position of Wellheads (NAD 83)

WELL	LATITUDE	LONGITUDE
25-9	39.41044°	108.05078°
25-8BB	39.41042°	108.05093°
25-7	39.41041°	108.05099°
25-1	39.41046°	108.05081°
25-1BB	39.41045°	108.05086°
25-8	39.41044°	108.05091°
25-2BB	39.41044°	108.05097°
25-7BB	39.41043°	108.05102°

70 0 35 70

(SCALE IN FEET)

906 Main Street
Evanston, Wyoming 82930
Phone No. (307) 789-4545



Interference Plat

Project No. 09-04-04
Date Drawn: 8/26/09

Scale: 1" = 70'

Date Surveyed: 1/14/09
Latest Revision Date:

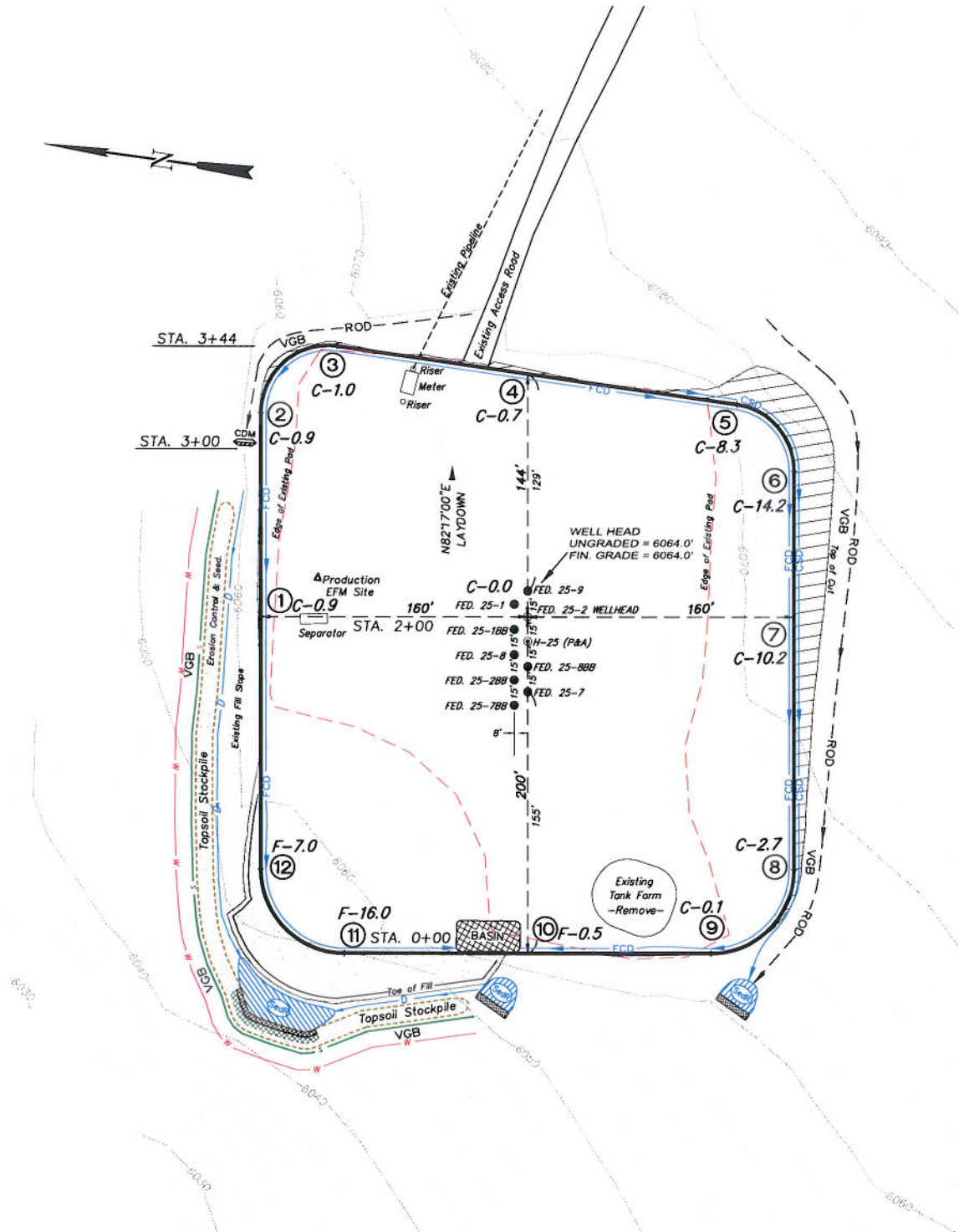
SHEET

2

OF 10

PH-25 Well Pad

SE1/4 NE1/4, SECTION 25, T 7 S, R 96 W, 6th P.M.
WELL PAD LAYOUT



Total Surface Disturbance = 3.78 Acres
(See Sheet 4 for Details)

NOTES:

- (1) Slope Track and/or Terrace all Slopes and Piles
- (2) Erosion Control & Seed Topsoil
- (3) Erosion Control & Seed Outside
- (4) Slope away from Substructure Areas 1% to 3% to Flow Control

LEGEND

- LEGEND**
- S= SLASH
 - ST = SEDIMENT TRAP
 - SeP= SEDIMENT RESERVOIR
 - R.O.D.= RUN-ON DIVERSION
 - W= PERIMETER CONTROL (WATTLES)
 - CSO = CUT SLOPE DIVERSION (BERM TOE OF CUT SLOPE)
 - D = FILL DIVERSION TO SEDIMENT TRAP
 - VEB = VEGETATION BUFFER (UNDISTURBED LAND INSIDE PC)
 - FCD = FLOW CONTROL DITCH
 - PAI = PAID ACCESS ROAD INTERFACE
 - LEVEL SPREADER
 - TOE BERM (PLACED AT TOE OF ALL FILL SLOPES/STOCKPILES)
 - TOPSOIL
 - SEED, ECB & FLEX
 - SEED



906 Main Street
Evanston, Wyoming 82930
Phone No. (307) 789-4545

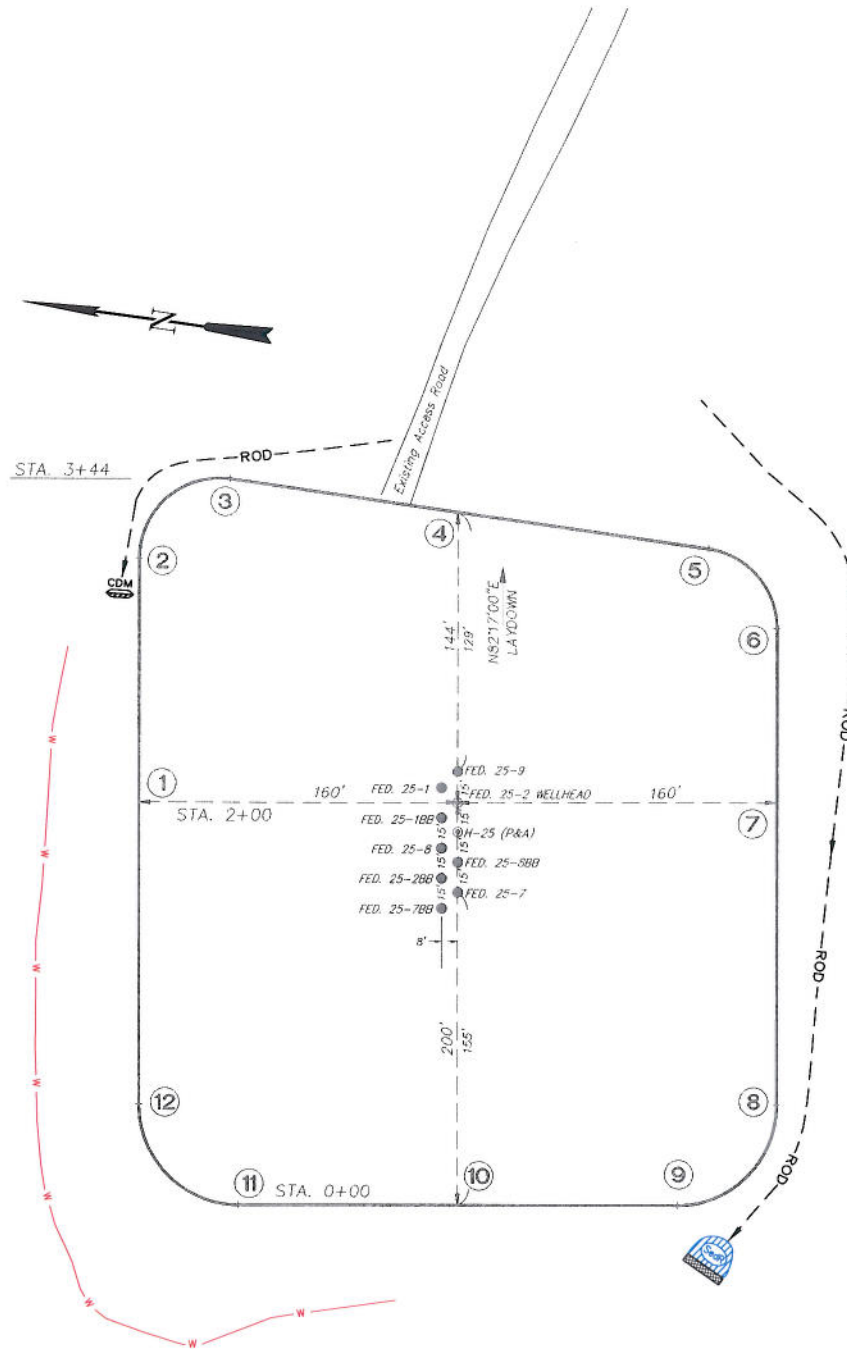


<i>Well Pad Layout</i>		Scale: 1" = 60'	SHEET 3 OF 10
Project No.	09-04-04	Date Surveyed: 1/14/09	
Date Drawn: 8/14/09	Latest Revision Date:		

EnCana Oil & Gas (USA) Inc.

PH-25 Well Pad

SE1/4 NE1/4, SECTION 25, T 7 S, R 96 W, 6th P.M.
PRE-CONSTRUCTION PLAT



Total Surface Disturbance = 3.78 Acres
(See Sheet 4 for Details)

- NOTES:
- (1) Slope Track and/or Terrace all Slopes and Piles
 - (2) Erosion Control & Seed Topsoil
 - (3) Erosion Control & Seed Outside
 - (4) Slope away from Substructure Areas 1% to 3% to Flow Control

LEGEND

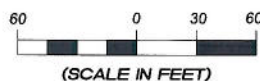
- SLASH
- SEDIMENT TRAP
- SEDIMENT RESERVOIR
- R.O.D. = RUN-ON DIVERSION
- PERIMETER CONTROL (WATTLES)
- CUT SLOPE DIVERSION (BERM TOE OF CUT SLOPE)
- FILL DIVERSION TO SEDIMENT TRAP
- VEGETATION BUFFER (UNDISTURBED LAND INSIDE PC)
- FLOW CONTROL DITCH
- PAD/ACCESS ROAD INTERFACE
- LEVEL SPREADER
- TOE BERM (PLACED AT TOE OF ALL FILL SLOPES/STOCKPILES)
- TOPSOIL BERM
- SEED, ECB & FLEX
- SEED

PRE-CONSTRUCTION PHASE COMPLETE,
AUTHORIZATION TO CONTINUE
CONSTRUCTION.

SIGNATURE: _____



906 Main Street
Evanston, Wyoming 82930
Phone No. (307) 789-4545



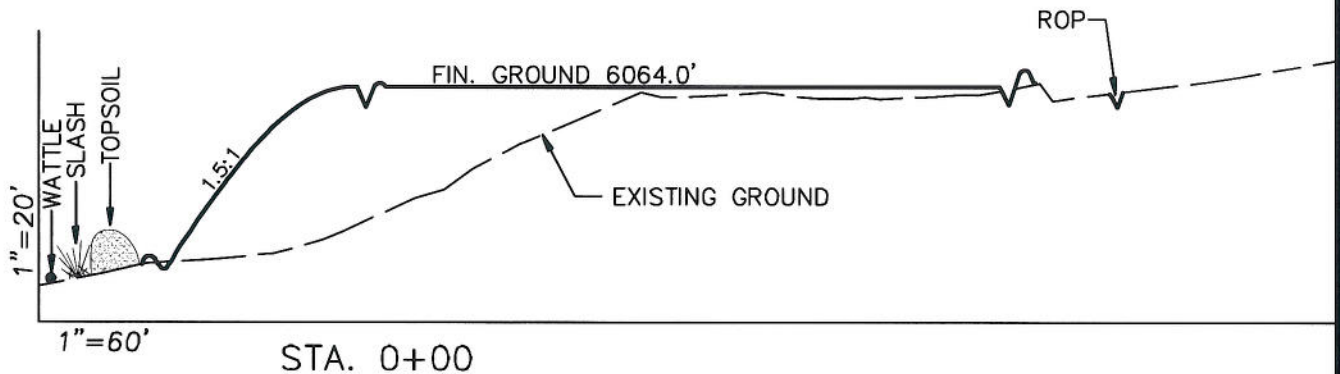
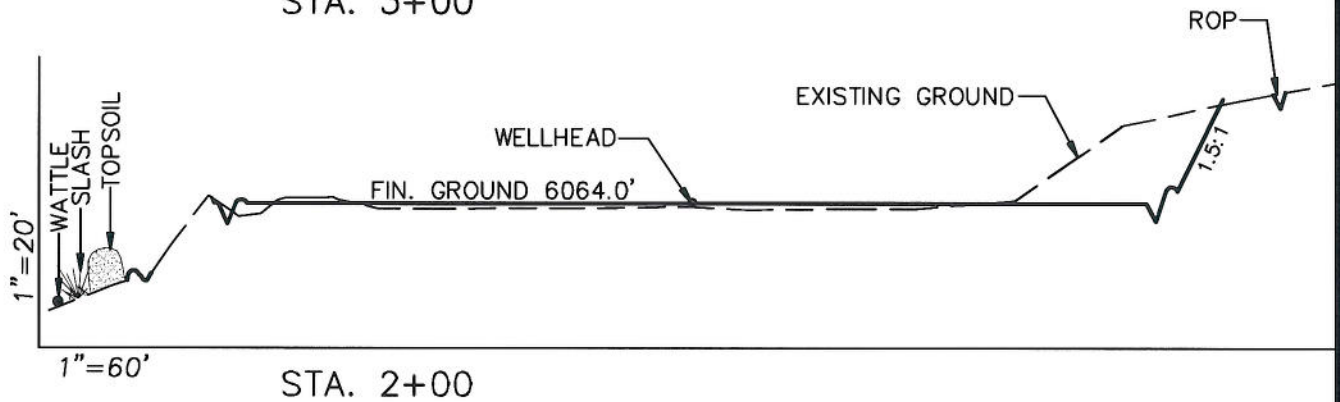
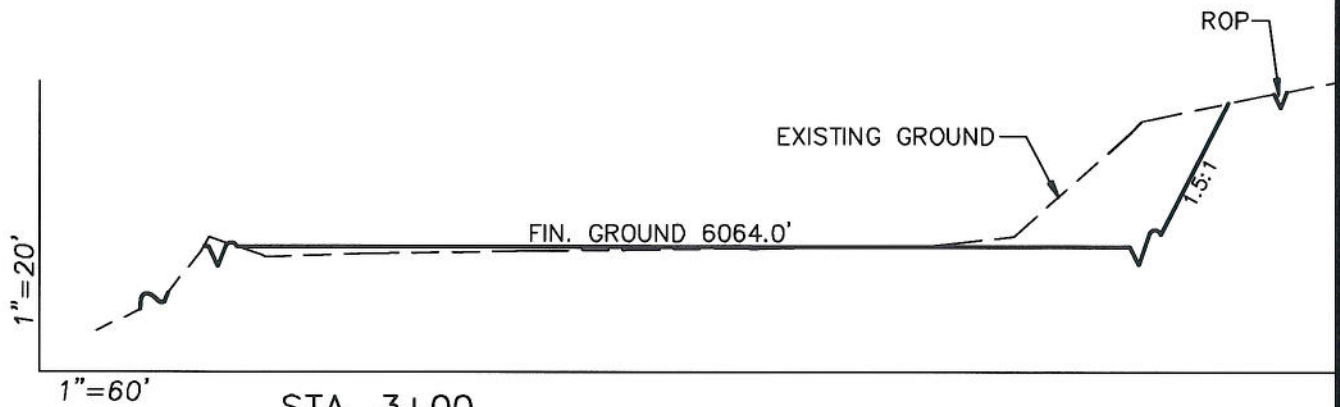
Pre-Construction		Scale: 1" = 60'
Project No.	09-04-04	Date Surveyed: 1/14/09
Date	8/14/09	Latest Revision
Drawn:		Date:

SHEET
3a
OF 10

EnCana Oil & Gas (USA) Inc.

Well Pad PH-25

CROSS SECTIONS



SURFACE DISTURBANCE (IN ACRES)

Well Pad	2.5
Side Slopes	0.25
Topsoil & Waste Material	1.03
TOTAL	3.78

NOTE:
ALL CUT AND FILL
SLOPES ARE AT 1.5:1
UNLESS OTHERWISE
NOTED.

EARTHWORK QUANTITIES

(in Cubic Yards w/ 0% shrink/swell)

ITEM	CUT	FILL	6" TOPSOIL	EXCESS
PAD	3400	3234	Topsoil not included in Excavation	166
PIT	0	0		0
TOTALS	3400	3234	1162	166



906 Main Street
Evanston, Wyoming 82930
Phone No. (307) 789-4545

Cross Sections

Project No. 09-04-04
Date Drawn: 8/26/09

Scale: As Shown

Date Surveyed: 1/14/09
Latest Revision Date:

SHEET

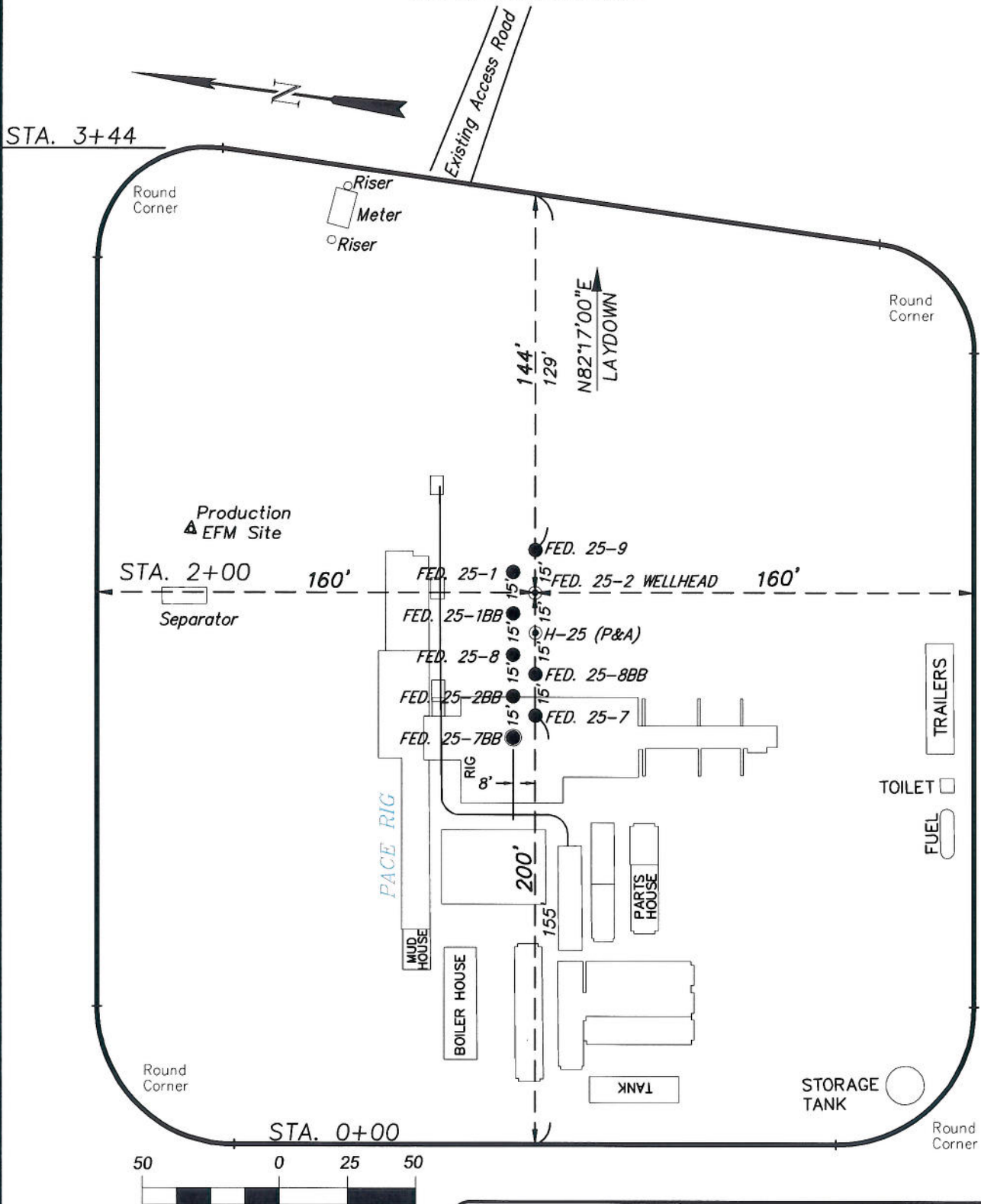
4

OF 10

EnCana Oil & Gas (USA) Inc.

Well Pad PH-25

TYPICAL RIG LAYOUT



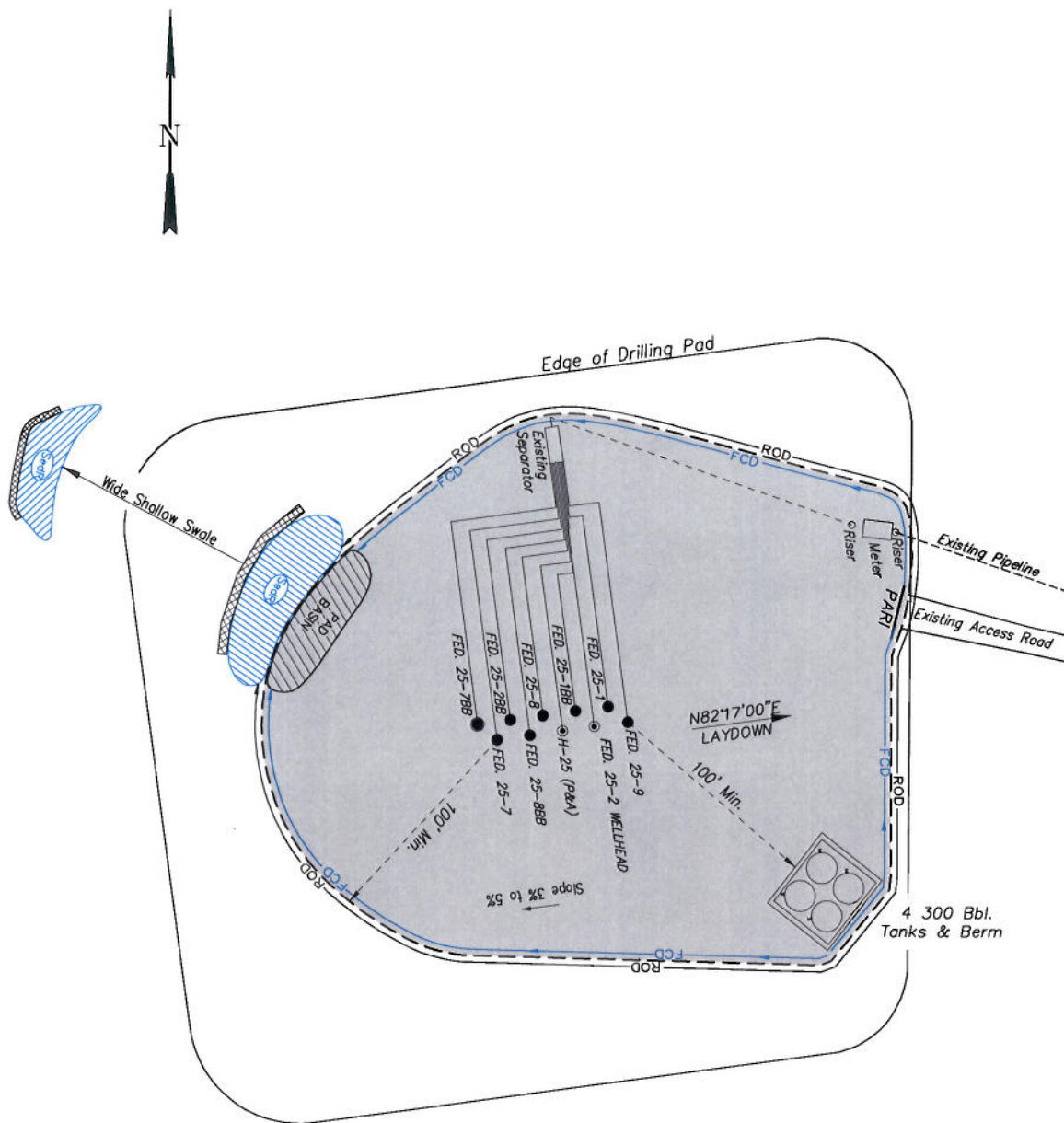
(SCALE IN FEET)



906 Main Street
Evanston, Wyoming 82930
Phone No. (307) 789-4545

Rig Layout		Scale: 1" = 50'	SHEET 5 OF 10
Project No.	09-04-04	Date Surveyed: 1/14/09	
Date Drawn: 8/14/09		Latest Revision Date:	

EnCana Oil & Gas (USA) Inc.
PH-25 Well Pad
PRODUCTION SCHEMATIC



NOTES:

1. Set Tanks High so pad Entrance & Tank Area Can Drain to Pad Basin
2. Gravel Pad 75' from Wells & Around Tanks and Separators
3. Pad Drains to Pad Basin at a 3% to 5% slope
4. BMP Selection and Position may change Depending on Actual Conditions Encountered During the Construction Process

NOTE:

Actual Equipment Layout and Reclaimed Pad Surface Area May Change due to Production Requirements or Site Conditions.

ESTIMATED AREAS
RECLAIMED AREA: 2.41 ACRES
UNRECLAIMED AREA: 1.37 ACRES

LEGEND

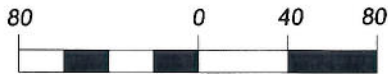
- S- = SLASH
- ST = SEDIMENT TRAP
- SedR = SEDIMENT RESERVOIR
- R.O.D. = RUN-ON DIVERSION
- W- = PERIMETER CONTROL (WATTLES)
- CSO = CUT SLOPE DIVERSION (BERM TOE OF CUT SLOPE)
- D = FILL DIVERSION TO SEDIMENT TRAP
- VGB = VEGETATION BUFFER (UNDISTURBED LAND INSIDE PC)
- FCD = FLOW CONTROL DITCH
- PARI = PAD/ACCESS ROAD INTERFACE
- LEVEL SPREADER
- TOE BERM (PLACED AT TOE OF ALL FILL SLOPES/STOCKPILES)
- TOPSOIL BERM
- SEED, ECB & FLEX
- SEED



906 Main Street
 Evanston, Wyoming 82930
 Phone No. (307) 789-4545



Production Schematic		Scale: 1" = 50'	SHEET
Project No.	09-04-04	Date Surveyed	1/14/09
Date Drawn	8/26/09	Latest Revision	
		Date:	
			6
			OF 10



<i>Surface Disturbance</i>		Scale: 1" = 80'	SHEET 7 OF 10
Project No.	09-04-04	Date Surveyed: 1/14/09	
Date Drawn:	8/14/09	Latest Revision Date:	