



ENCANA OIL & GAS (USA) INC

Location: COLORADO Slot: Slot #06 Federal 25-8 (PH25) 1954'FNL & 630'FEL
Field: GARFIELD COUNTY (NEW) Well: Federal 25-8
Facility: SEC.25-T7S-R96W Wellbore: Federal 25-8 PWB

Plot reference wellpath is Federal 25-8 PWP Rev-A.0	
True vertical depths are referenced to Rig on Slot #06 Federal 25-8 (PH25) 1954'FNL & 630'FEL (RT)	Grid System: NAD83 / Lambert Colorado State Planes, Central Zone (502), US feet
Measured depths are referenced to Rig on Slot #06 Federal 25-8 (PH25) 1954'FNL & 630'FEL (RT)	North Reference: True north
Rig on Slot #06 Federal 25-8 (PH25) 1954'FNL & 630'FEL (RT) to Mean Sea Level: 6086 feet	Scale: True distance
Mean Sea Level to Mud line (Facility: SEC.25-T7S-R96W): 0 feet	Depths are in feet
Coordinates are in feet referenced to Slot	Created by: thomsuz on 10/16/2009

Location Information

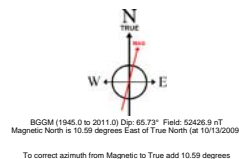
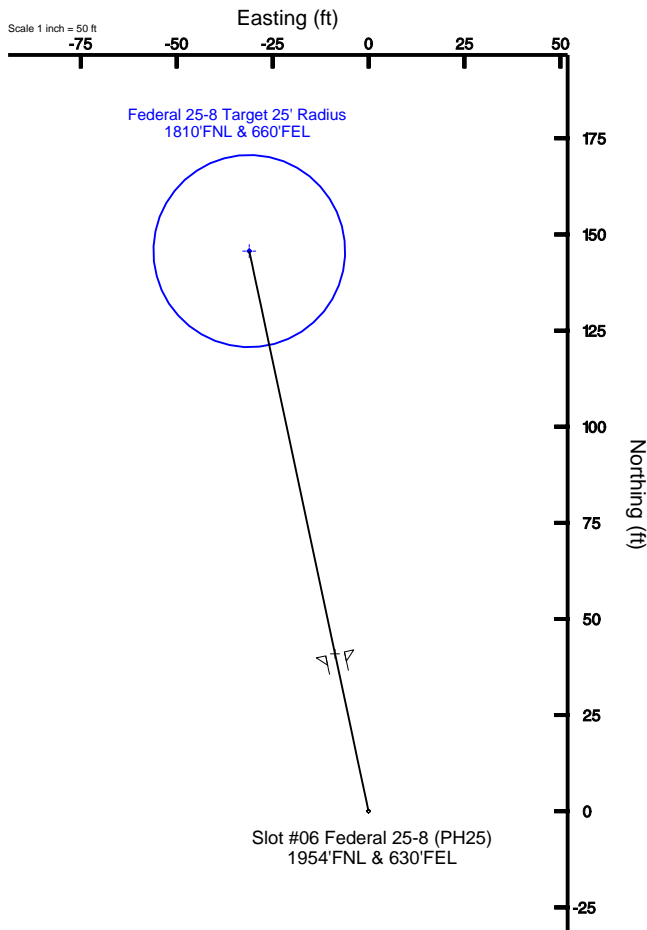
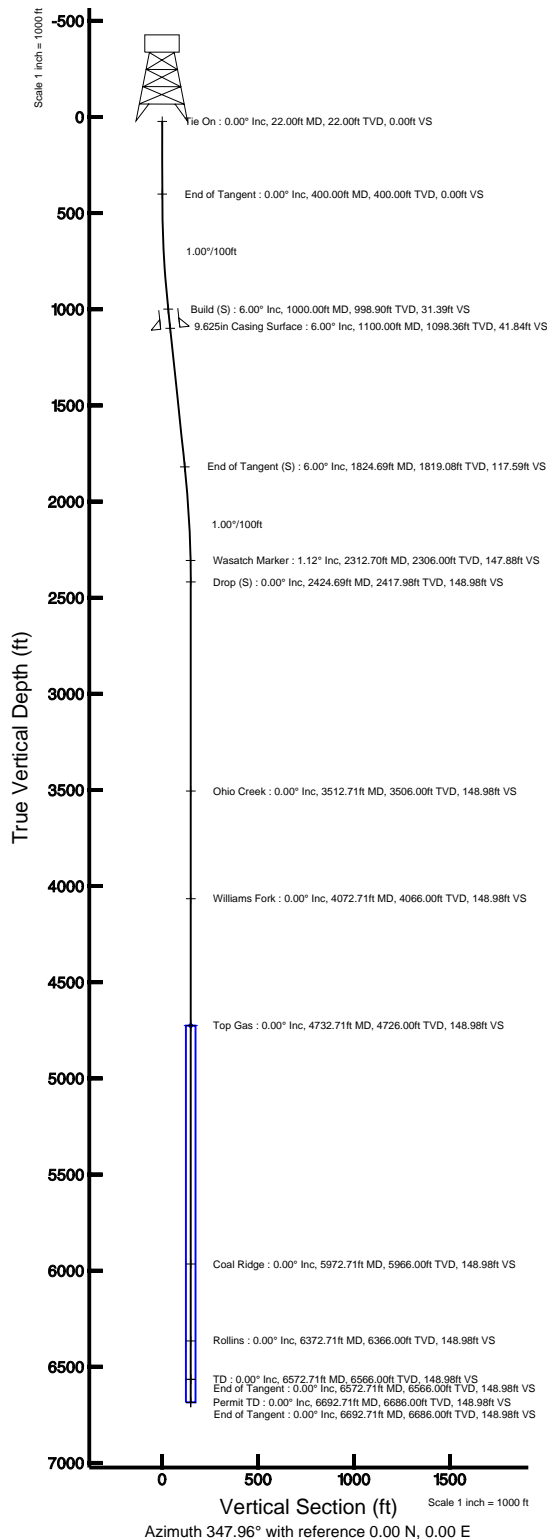
Facility Name			Grid East (USF)	Grid North (USF)	Latitude	Longitude
SEC.25-T7S-R96W			2279388.355	1584500.194	39°24'37.584"N	108°03'02.808"W
Slot	Local N (ft)	Local E (ft)	Grid East (USF)	Grid North (USF)	Latitude	Longitude
Slot #06 Federal 25-8 (PH25) 1954'FNL & 630'FEL	0.00	-36.73	2279351.638	1584501.225	39°24'37.584"N	108°03'03.276"W
Rig on Slot #06 Federal 25-8 (PH25) 1954'FNL & 630'FEL (RT) to Mud line (Facility: SEC.25-T7S-R96W)						6086ft
Mean Sea Level to Mud line (Facility: SEC.25-T7S-R96W)						0ft
Rig on Slot #06 Federal 25-8 (PH25) 1954'FNL & 630'FEL (RT) to Mean Sea Level						6086ft

Targets

Name	MD (ft)	TVD (ft)	Local N (ft)	Local E (ft)	Grid East (USft)	Grid North (USft)	Latitude	Longitude
Federal 25-8 Target 25' Radius 1810'FNL & 660'FEL		4726.00	145.70	-31.08	2279324.66	1584647.73	39°24'39.024"N	108°03'03.672"W

Well Profile Data

Design Comment	MD (ft)	Inc (")	Az (°)	TVD (ft)	Local N (ft)	Local E (ft)	DLS (°/100ft)	VS (ft)
Tie On	22.00	0.000	347.958	22.00	0.00	0.00	0.00	0.00
End of Tangent	400.00	0.000	347.958	400.00	0.00	0.00	0.00	0.00
Build (S)	1000.00	6.000	347.958	998.90	30.70	-6.55	1.00	31.39
End of Tangent (S)	1824.69	6.000	347.958	1819.08	115.00	-24.53	0.00	117.59
Drop (S)	2424.69	0.000	347.958	2417.98	145.70	-31.08	1.00	148.98
End of Tangent	6572.71	0.000	347.958	6566.00	145.70	-31.08	0.00	148.98
End of Tangent	6692.71	0.000	347.958	6686.00	145.70	-31.08	0.00	148.98





Planned Wellpath Report

Federal 25-8 PWP Rev-A.0

Page 1 of 5



REFERENCE WELLPATH IDENTIFICATION

Operator	ENCANA OIL & GAS (USA) INC	Slot	Slot #06 Federal 25-8 (PH25) 1954'FNL & 630'FEL
Area	COLORADO	Well	Federal 25-8
Field	GARFIELD COUNTY (NEW)	Wellbore	Federal 25-8 PWB
Facility	SEC.25-T7S-R96W		

REPORT SETUP INFORMATION

Projection System	NAD83 / Lambert Colorado State Planes, Central Zone (502), US feet	Software System	WellArchitect® 2.0
North Reference	True	User	Thomsuzc
Scale	0.99995	Report Generated	10/16/2009 at 9:47:52 PM
Convergence at slot	1.61° West	Database/Source file	Denver/Federal_25-8_PWB.xml

WELLPATH LOCATION

	Local coordinates		Grid coordinates		Geographic coordinates	
	North[ft]	East[ft]	Easting[USft]	Northing[USft]	Latitude	Longitude
Slot Location	0.00	-36.73	2279351.64	1584501.23	39°24'37.584"N	108°03'03.276"W
Facility Reference Pt			2279388.36	1584500.19	39°24'37.584"N	108°03'02.808"W
Field Reference Pt			3000000.01	4560984.48	47°34'21.070"N	105°30'00.000"W

WELLPATH DATUM

Calculation method	Minimum curvature	Rig on Slot #06 Federal 25-8 (PH25) 1954'FNL & 630'FEL (RT) to Facility Vertical Datum	6086.00ft
Horizontal Reference Pt	Slot	Rig on Slot #06 Federal 25-8 (PH25) 1954'FNL & 630'FEL (RT) to Mean Sea Level	6086.00ft
Vertical Reference Pt	Rig on Slot #06 Federal 25-8 (PH25) 1954'FNL & 630'FEL (RT)	Facility Vertical Datum to Mud Line (Facility)	0.00ft
MD Reference Pt	Rig on Slot #06 Federal 25-8 (PH25) 1954'FNL & 630'FEL (RT)	Section Origin	N 0.00, E 0.00 ft
Field Vertical Reference	Mean Sea Level	Section Azimuth	347.96°



Planned Wellpath Report

Federal 25-8 PWP Rev-A.0

Page 2 of 5



REFERENCE WELLPATH IDENTIFICATION

Operator	ENCANA OIL & GAS (USA) INC	Slot	Slot #06 Federal 25-8 (PH25) 1954'FNL & 630'FEL
Area	COLORADO	Well	Federal 25-8
Field	GARFIELD COUNTY (NEW)	Wellbore	Federal 25-8 PWB
Facility	SEC.25-T7S-R96W		

WELLPATH DATA (74 stations) † = interpolated/extrapolated station

MD [ft]	Inclination [°]	Azimuth [°]	TVD [ft]	Vert Sect [ft]	North [ft]	East [ft]	DLS [°/100ft]
0.00†	0.000	347.958	0.00	0.00	0.00	0.00	0.00
22.00	0.000	347.958	22.00	0.00	0.00	0.00	0.00
122.00†	0.000	347.958	122.00	0.00	0.00	0.00	0.00
222.00†	0.000	347.958	222.00	0.00	0.00	0.00	0.00
322.00†	0.000	347.958	322.00	0.00	0.00	0.00	0.00
400.00	0.000	347.958	400.00	0.00	0.00	0.00	0.00
422.00†	0.220	347.958	422.00	0.04	0.04	-0.01	1.00
522.00†	1.220	347.958	521.99	1.30	1.27	-0.27	1.00
622.00†	2.220	347.958	621.94	4.30	4.21	-0.90	1.00
722.00†	3.220	347.958	721.83	9.05	8.85	-1.89	1.00
822.00†	4.220	347.958	821.62	15.53	15.19	-3.24	1.00
922.00†	5.220	347.958	921.28	23.76	23.24	-4.96	1.00
1000.00	6.000	347.958	998.90	31.39	30.70	-6.55	1.00
1022.00†	6.000	347.958	1020.78	33.69	32.95	-7.03	0.00
1122.00†	6.000	347.958	1120.24	44.14	43.17	-9.21	0.00
1222.00†	6.000	347.958	1219.69	54.59	53.39	-11.39	0.00
1322.00†	6.000	347.958	1319.14	65.05	63.61	-13.57	0.00
1422.00†	6.000	347.958	1418.59	75.50	73.84	-15.75	0.00
1522.00†	6.000	347.958	1518.04	85.95	84.06	-17.93	0.00
1622.00†	6.000	347.958	1617.50	96.40	94.28	-20.11	0.00
1722.00†	6.000	347.958	1716.95	106.86	104.51	-22.29	0.00
1822.00†	6.000	347.958	1816.40	117.31	114.73	-24.47	0.00
1824.69	6.000	347.958	1819.08	117.59	115.00	-24.53	0.00
1922.00†	5.027	347.958	1915.93	126.94	124.15	-26.48	1.00
2022.00†	4.027	347.958	2015.62	134.83	131.87	-28.13	1.00
2122.00†	3.027	347.958	2115.43	140.98	137.88	-29.41	1.00
2222.00†	2.027	347.958	2215.33	145.39	142.19	-30.33	1.00
2322.00†	1.027	347.958	2315.30	148.06	144.80	-30.89	1.00
2422.00†	0.027	347.958	2415.29	148.98	145.70	-31.08	1.00
2424.69	0.000	347.958	2417.98 ¹	148.98	145.70	-31.08	1.00
2522.00†	0.000	347.958	2515.29	148.98	145.70	-31.08	0.00
2622.00†	0.000	347.958	2615.29	148.98	145.70	-31.08	0.00
2722.00†	0.000	347.958	2715.29	148.98	145.70	-31.08	0.00
2822.00†	0.000	347.958	2815.29	148.98	145.70	-31.08	0.00
2922.00†	0.000	347.958	2915.29	148.98	145.70	-31.08	0.00
3022.00†	0.000	347.958	3015.29	148.98	145.70	-31.08	0.00
3122.00†	0.000	347.958	3115.29	148.98	145.70	-31.08	0.00
3222.00†	0.000	347.958	3215.29	148.98	145.70	-31.08	0.00
3322.00†	0.000	347.958	3315.29	148.98	145.70	-31.08	0.00
3422.00†	0.000	347.958	3415.29	148.98	145.70	-31.08	0.00
3522.00†	0.000	347.958	3515.29	148.98	145.70	-31.08	0.00
3622.00†	0.000	347.958	3615.29	148.98	145.70	-31.08	0.00
3722.00†	0.000	347.958	3715.29	148.98	145.70	-31.08	0.00
3822.00†	0.000	347.958	3815.29	148.98	145.70	-31.08	0.00
3922.00†	0.000	347.958	3915.29	148.98	145.70	-31.08	0.00



Planned Wellpath Report

Federal 25-8 PWP Rev-A.0

Page 3 of 5



REFERENCE WELLPATH IDENTIFICATION

Operator	ENCANA OIL & GAS (USA) INC	Slot	Slot #06 Federal 25-8 (PH25) 1954'FNL & 630'FEL
Area	COLORADO	Well	Federal 25-8
Field	GARFIELD COUNTY (NEW)	Wellbore	Federal 25-8 PWB
Facility	SEC.25-T7S-R96W		

WELLPATH DATA (74 stations) † = interpolated/extrapolated station

MD [ft]	Inclination [°]	Azimuth [°]	TVD [ft]	Vert Sect [ft]	North [ft]	East [ft]	DLS [°/100ft]
4022.00†	0.000	347.958	4015.29	148.98	145.70	-31.08	0.00
4122.00†	0.000	347.958	4115.29	148.98	145.70	-31.08	0.00
4222.00†	0.000	347.958	4215.29	148.98	145.70	-31.08	0.00
4322.00†	0.000	347.958	4315.29	148.98	145.70	-31.08	0.00
4422.00†	0.000	347.958	4415.29	148.98	145.70	-31.08	0.00
4522.00†	0.000	347.958	4515.29	148.98	145.70	-31.08	0.00
4622.00†	0.000	347.958	4615.29	148.98	145.70	-31.08	0.00
4722.00†	0.000	347.958	4715.29	148.98	145.70	-31.08	0.00
4822.00†	0.000	347.958	4815.29	148.98	145.70	-31.08	0.00
4922.00†	0.000	347.958	4915.29	148.98	145.70	-31.08	0.00
5022.00†	0.000	347.958	5015.29	148.98	145.70	-31.08	0.00
5122.00†	0.000	347.958	5115.29	148.98	145.70	-31.08	0.00
5222.00†	0.000	347.958	5215.29	148.98	145.70	-31.08	0.00
5322.00†	0.000	347.958	5315.29	148.98	145.70	-31.08	0.00
5422.00†	0.000	347.958	5415.29	148.98	145.70	-31.08	0.00
5522.00†	0.000	347.958	5515.29	148.98	145.70	-31.08	0.00
5622.00†	0.000	347.958	5615.29	148.98	145.70	-31.08	0.00
5722.00†	0.000	347.958	5715.29	148.98	145.70	-31.08	0.00
5822.00†	0.000	347.958	5815.29	148.98	145.70	-31.08	0.00
5922.00†	0.000	347.958	5915.29	148.98	145.70	-31.08	0.00
6022.00†	0.000	347.958	6015.29	148.98	145.70	-31.08	0.00
6122.00†	0.000	347.958	6115.29	148.98	145.70	-31.08	0.00
6222.00†	0.000	347.958	6215.29	148.98	145.70	-31.08	0.00
6322.00†	0.000	347.958	6315.29	148.98	145.70	-31.08	0.00
6422.00†	0.000	347.958	6415.29	148.98	145.70	-31.08	0.00
6522.00†	0.000	347.958	6515.29	148.98	145.70	-31.08	0.00
6572.71	0.000	347.958	6566.00	148.98	145.70	-31.08	0.00
6622.00†	0.000	347.958	6615.29	148.98	145.70	-31.08	0.00
6692.71	0.000	347.958	6686.00	148.98	145.70	-31.08	0.00

HOLE & CASING SECTIONS Ref Wellbore: Federal 25-8 PWB Ref Wellpath: Federal 25-8 PWP Rev-A.0

String/Diameter	Start MD [ft]	End MD [ft]	Interval [ft]	Start TVD [ft]	End TVD [ft]	Start N/S [ft]	Start E/W [ft]	End N/S [ft]	End E/W [ft]
12.25in Open Hole	22.00	1100.00	1078.00	22.00	1098.36	0.00	0.00	40.92	-8.73
9.625in Casing Surface	22.00	1100.00	1078.00	22.00	1098.36	0.00	0.00	40.92	-8.73



Planned Wellpath Report

Federal 25-8 PWP Rev-A.0

Page 4 of 5



REFERENCE WELLPATH IDENTIFICATION

Operator	ENCANA OIL & GAS (USA) INC	Slot	Slot #06 Federal 25-8 (PH25) 1954'FNL & 630'FEL
Area	COLORADO	Well	Federal 25-8
Field	GARFIELD COUNTY (NEW)	Wellbore	Federal 25-8 PWB
Facility	SEC.25-T7S-R96W		

TARGETS

Name	MD [ft]	TVD [ft]	North [ft]	East [ft]	Grid East [srv ft]	Grid North [srv ft]	Latitude	Longitude	Shape
1) Federal 25-8 Target 25' Radius 1810'FNL & 660'FEL		4726.00	145.70	-31.08	2279324.66	1584647.73	39°24'39.024"N	108°03'03.672"W	circle

SURVEY PROGRAM Ref Wellbore: Federal 25-8 PWB Ref Wellpath: Federal 25-8 PWP Rev-A.0

Start MD [ft]	End MD [ft]	Positional Uncertainty Model	Log Name/Comment	Wellbore
22.00	6692.71	MTC (Collar, post-2000) (Standard)		Federal 25-8 PWB



Planned Wellpath Report

Federal 25-8 PWP Rev-A.0

Page 5 of 5



REFERENCE WELLPATH IDENTIFICATION

Operator	ENCANA OIL & GAS (USA) INC	Slot	Slot #06 Federal 25-8 (PH25) 1954'FNL & 630'FEL
Area	COLORADO	Well	Federal 25-8
Field	GARFIELD COUNTY (NEW)	Wellbore	Federal 25-8 PWB
Facility	SEC.25-T7S-R96W		

WELLPATH COMMENTS

MD [ft]	Inclination [°]	Azimuth [°]	TVD [ft]	Comment
2312.70	1.120	347.958	2306.00	Wasatch Marker
3512.71	0.000	347.958	3506.00	Ohio Creek
4072.71	0.000	347.958	4066.00	Williams Fork
4732.71	0.000	347.958	4726.00	Top Gas
5972.71	0.000	347.958	5966.00	Coal Ridge
6372.71	0.000	347.958	6366.00	Rollins
6572.71	0.000	347.958	6566.00	TD
6692.71	0.000	347.958	6686.00	Permit TD