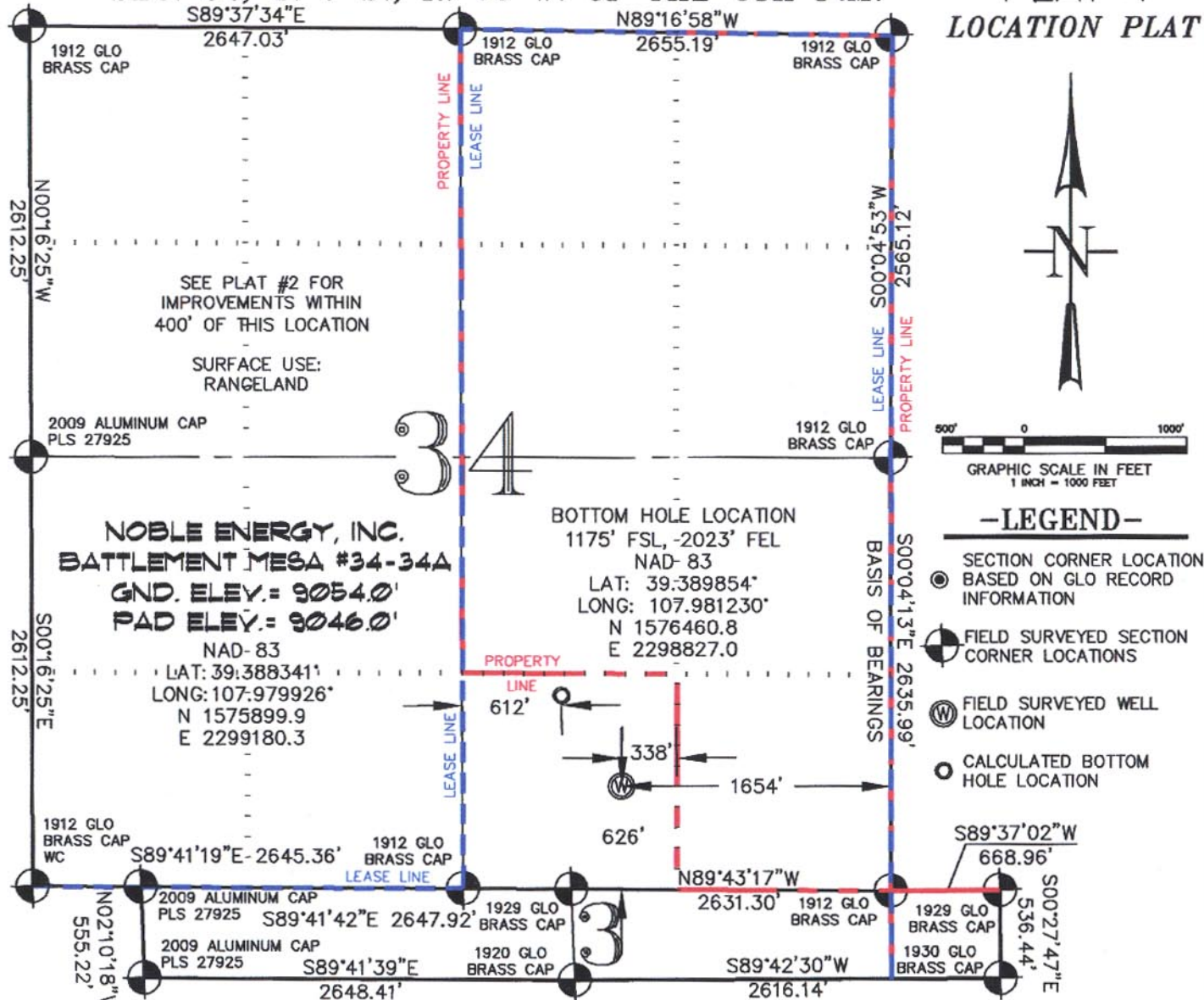


SEC. 34, T. 7 S., R. 95 W. OF THE 6TH P.M.

PLAT #1  
LOCATION PLAT



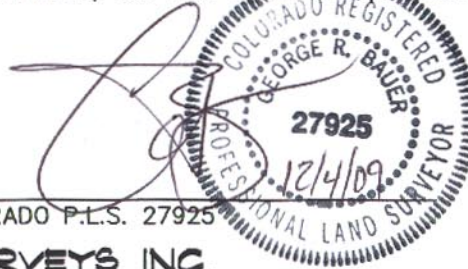
THIS WELL LOCATION PLAT WAS PREPARED FOR NOBLE ENERGY INC. TO LOCATE THE BATTLEMENT MESA #34-34A WELL, 626 FEET FROM THE SOUTH LINE AND 1654 FEET FROM THE EAST LINE IN THE SW1/4 SE1/4 OF SECTION 34, T. 7 S., R. 95 W. OF THE 6TH P.M. GARFIELD COUNTY, COLORADO.

#### REFERENCE NOTES

- 1) T. 7 S., R. 95 W., 6TH P.M. GLO PLAT.
- 2) U.S.G.S. QUAD: PARACHUTE, CO
- 3) ELEVATIONS BASED ON N.A.V.D. 1988
- 4) LATITUDES AND LONGITUDES ARE BASED ON NAD 83, COLORADO CENTRAL ZONE.
- 5) GPS OPERATOR ROBERT WOOD, OBSERVED A PDOP OF 2.3.
- 6) ALL GPS OBSERVATIONS ARE IN COMPLIANCE WITH COGCC RULE NO. 215.
- 7) SURFACE AND BOTTOM HOLE LOCATIONS ARE MEASURED 90° FROM SECTION LINES.

#### SURVEYOR'S CERTIFICATE

I, George R. Bauer: a Professional Land Surveyor in the State of Colorado do hereby certify that this Survey was made under my direct supervision, and that this Plat represents said Survey.



COLORADO P.L.S. 27925



CONSTRUCTION SURVEYS, INC.  
0012 SUNRISE BLVD.  
SILT, CO 81652  
(970)876-5753

VIEW: 1F

|                    |                          |
|--------------------|--------------------------|
| SURVEYED: 08/28/07 | SCALE: 1" = 1000'        |
| DRAFTED: 11/30/09  | DWG: Noble\2006\Noble340 |
| CHECKED: 12/03/09  | SHEET: 1 of 10           |