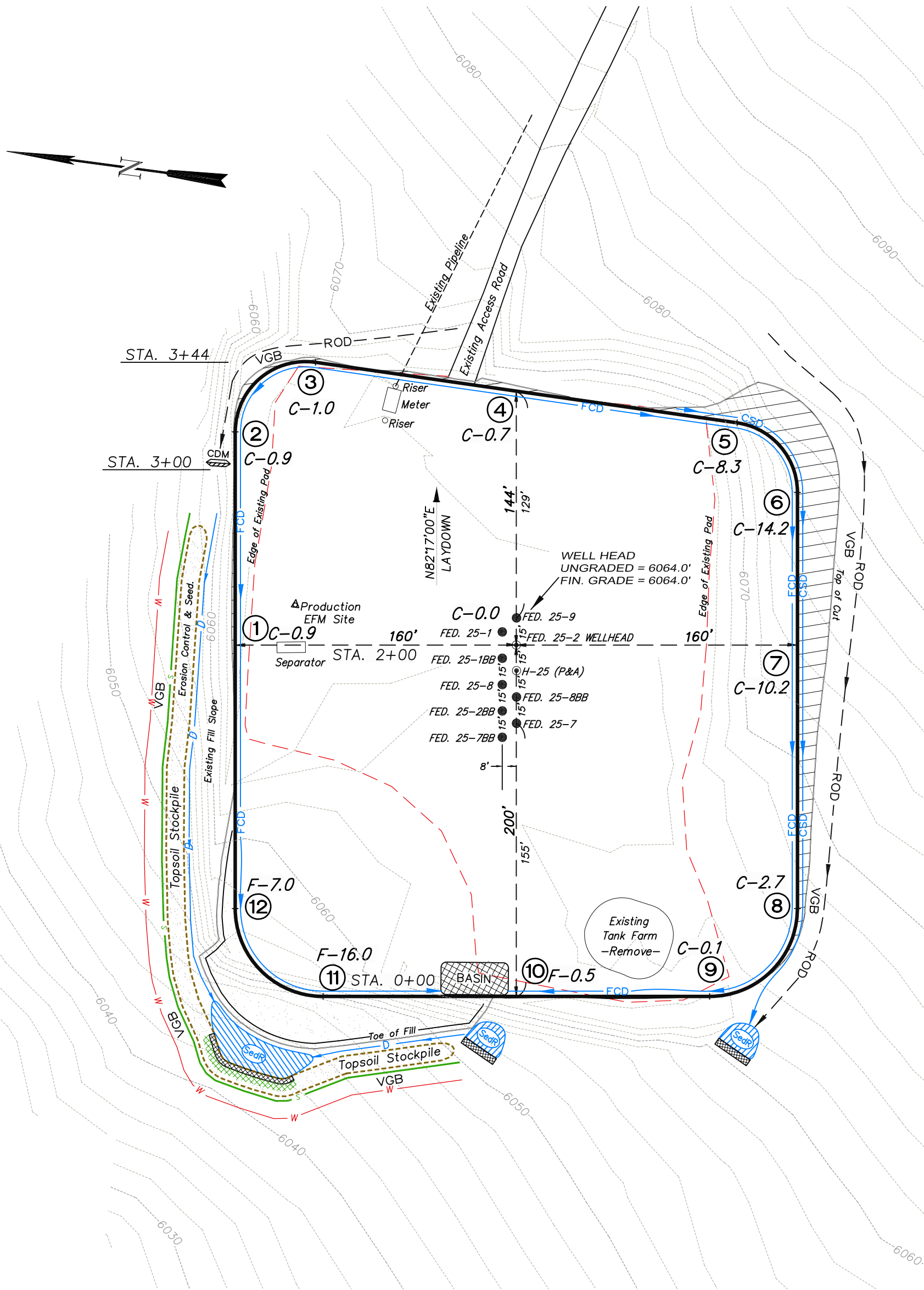


EnCana Oil & Gas (USA) Inc.
PH-25 Well Pad

SE1/4 NE1/4, SECTION 25, T 7 S, R 96 W, 6th P.M.
WELL PAD LAYOUT



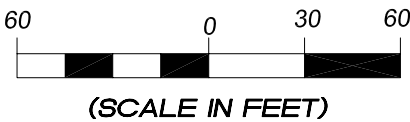
Total Surface Disturbance = 3.78 Acres
(See Sheet 4 for Details)

- NOTES;
- (1) Slope Track and/or Terrace all Slopes and Piles
 - (2) Erosion Control & Seed Topsoil
 - (3) Erosion Control & Seed Outside
 - (4) Slope away from Substructure Areas 1% to 3% to Flow Control

- LEGEND
- SLASH
 - ST = SEDIMENT TRAP
 - SedR = SEDIMENT RESERVOIR
 - R.O.D. = RUN-ON DIVERSION
 - PERIMETER CONTROL (WATTLES)
 - CSD = CUT SLOPE DIVERSION (BERM TOE OF CUT SLOPE)
 - D = FILL DIVERSION TO SEDIMENT TRAP
 - VGB = VEGETATION BUFFER (UNDISTURBED LAND INSIDE PC)
 - FCD = FLOW CONTROL DITCH
 - PARI = PAD/ACCESS ROAD INTERFACE
 - LEVEL SPREADER
 - TOE BERM (PLACED AT TOE OF ALL FILL SLOPES/STOCKPILES)
 - TOPSOIL BERM
 - SEED, ECB & FLEX
 - SEED



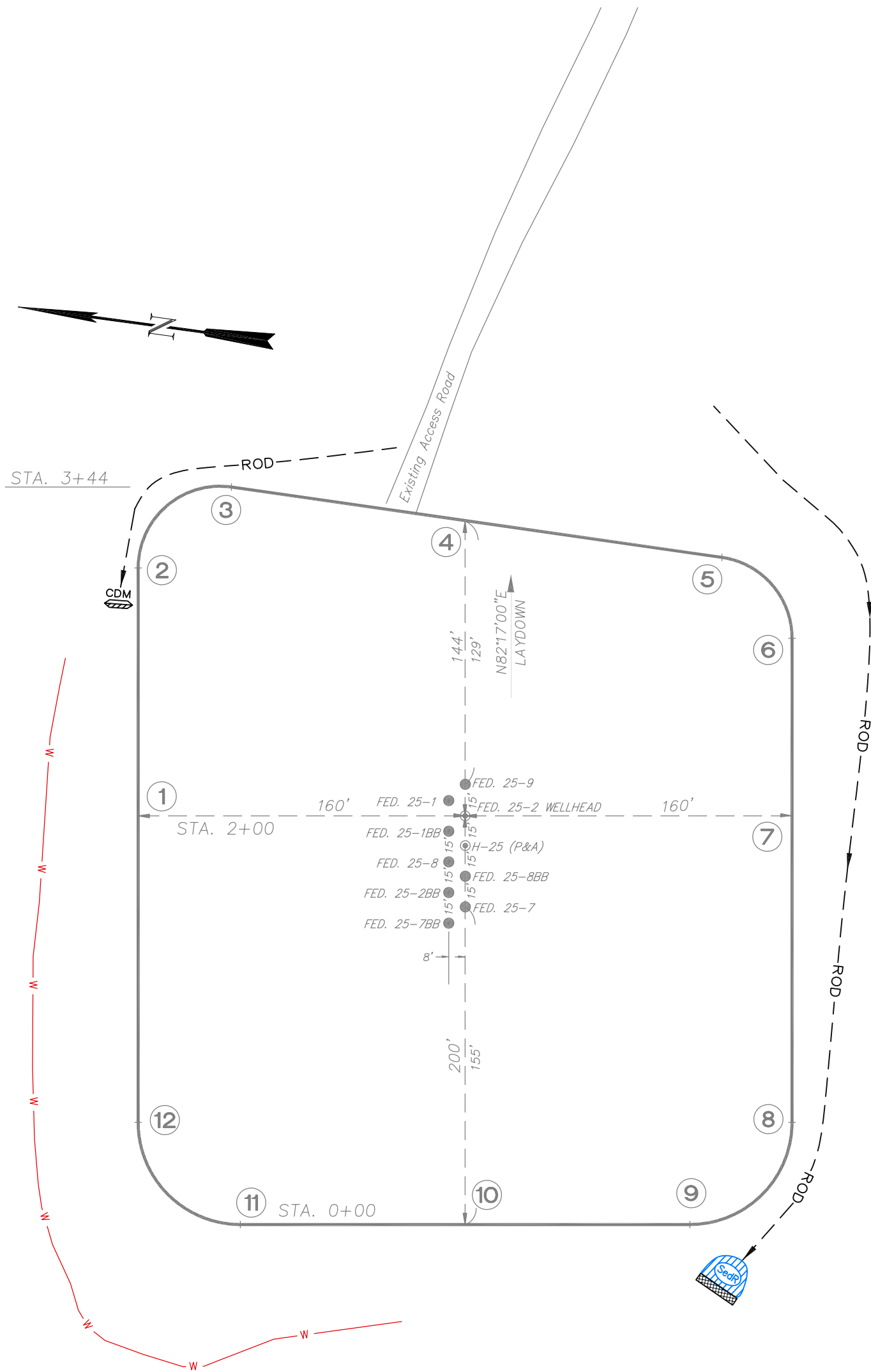
906 Main Street
Evanston, Wyoming 82930
Phone No. (307) 789-4545



Well Pad Layout		Scale: 1" = 60'	SHEET 3 OF 10
Project No.	09-04-04	Date Surveyed: 1/14/09	
Date	8/14/09	Latest Revision	
Drawn:		Date:	

EnCana Oil & Gas (USA) Inc.
PH-25 Well Pad

SE1/4 NE1/4, SECTION 25, T 7 S, R 96 W, 6th P.M.
PRE-CONSTRUCTION PLAT



Total Surface Disturbance = 3.78 Acres
(See Sheet 4 for Details)

- NOTES;
- (1) Slope Track and/or Terrace all Slopes and Piles
 - (2) Erosion Control & Seed Topsoil
 - (3) Erosion Control & Seed Outside
 - (4) Slope away from Substructure Areas 1% to 3% to Flow Control

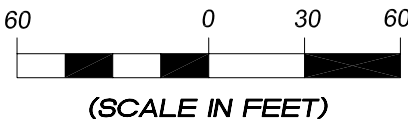
- LEGEND
- S— = SLASH
 - ST = SEDIMENT TRAP
 - SedR = SEDIMENT RESERVOIR
 - R.O.D. = RUN-ON DIVERSION
 - W— = PERIMETER CONTROL (WATTLES)
 - CSD = CUT SLOPE DIVERSION (BERM TOE OF CUT SLOPE)
 - D = FILL DIVERSION TO SEDIMENT TRAP
 - VGB = VEGETATION BUFFER (UNDISTURBED LAND INSIDE PC)
 - FCD = FLOW CONTROL DITCH
 - PARI = PAD/ACCESS ROAD INTERFACE
 - ▨ = LEVEL SPREADER
 - = TOE BERM (PLACED AT TOE OF ALL FILL SLOPES/STOCKPILES)
 - = TOPSOIL BERM
 - ▨ = SEED, ECB & FLEX
 - ▨ = SEED

PRE-CONSTRUCTION PHASE COMPLETE,
AUTHORIZATION TO CONTINUE
CONSTRUCTION.

SIGNATURE: _____



906 Main Street
Evanston, Wyoming 82930
Phone No. (307) 789-4545

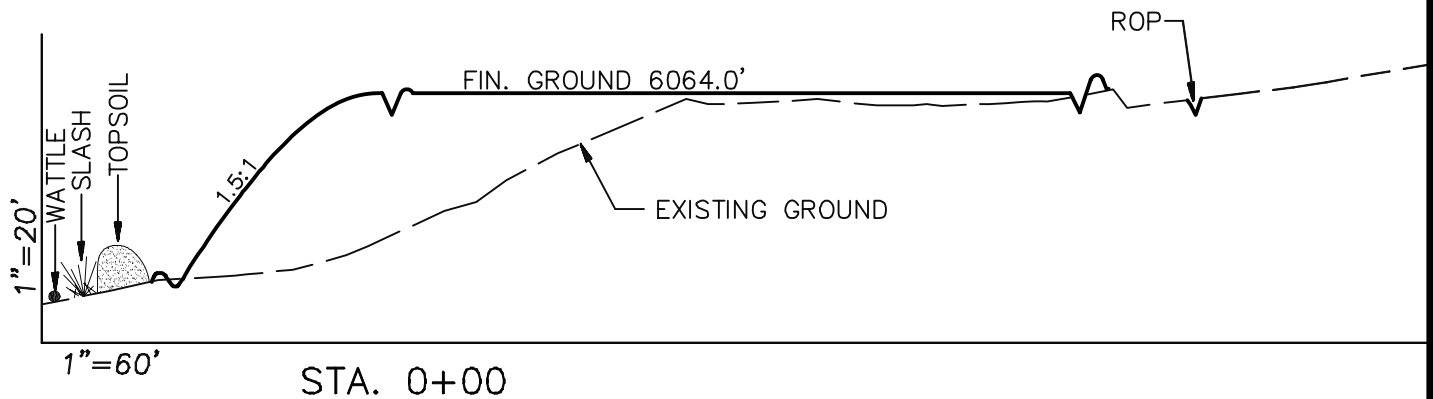
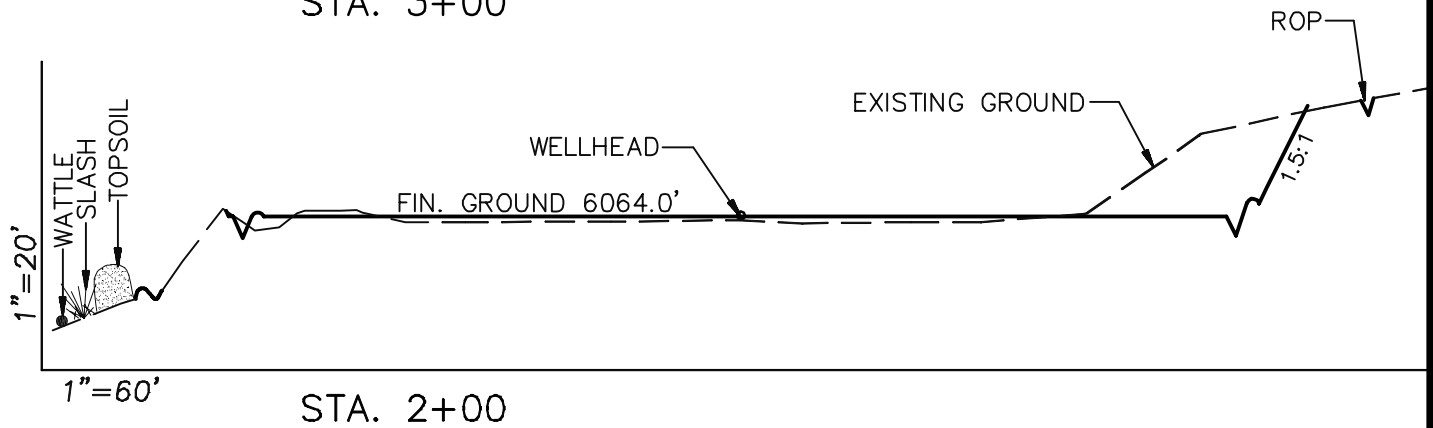
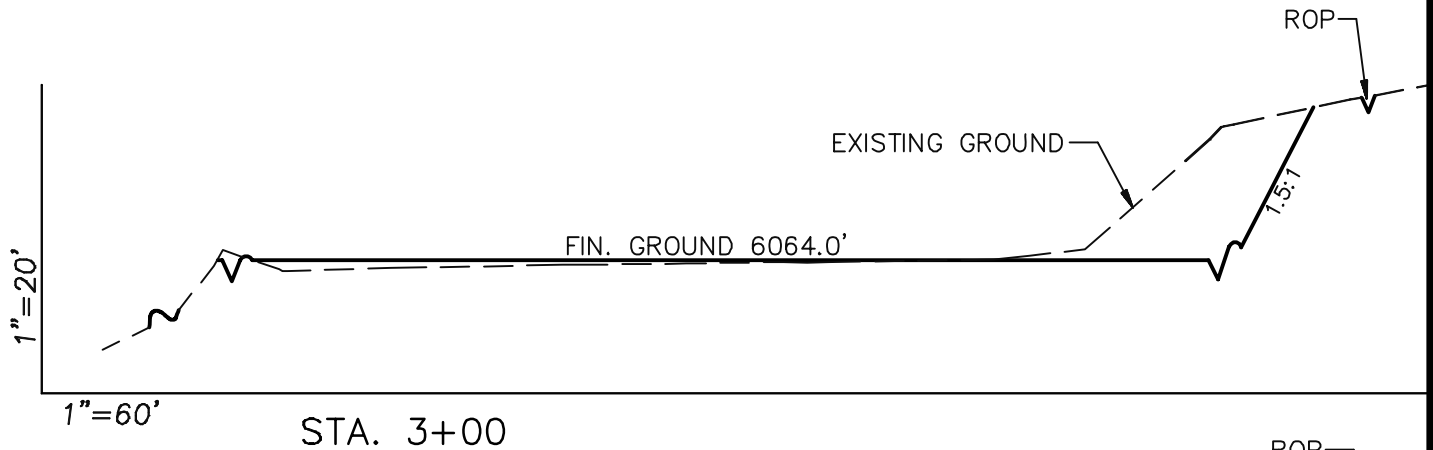


Pre-Construction		Scale: 1" = 60'	SHEET 3a OF 10
Project No.	09-04-04	Date Surveyed: 1/14/09	
Date Drawn:	8/14/09	Latest Revision Date:	

EnCana Oil & Gas (USA) Inc.

Well Pad PH-25

CROSS SECTIONS



SURFACE DISTURBANCE (IN ACRES)

Well Pad	2.5
Side Slopes	0.25
Topsoil & Waste Material	1.03
TOTAL	3.78

NOTE:
ALL CUT AND FILL
SLOPES ARE AT 1.5:1
UNLESS OTHERWISE
NOTED.

EARTHWORK QUANTITIES

(in Cubic Yards w/ 0% shrink/swell)

ITEM	CUT	FILL	6" TOPSOIL	EXCESS
PAD	3400	3234	Topsoil not included in Excavation	166
PIT	0	0		0
TOTALS	3400	3234	1162	166

Cross Sections

Project No. 09-04-04
Date Drawn: 8/26/09

Scale: As Shown

Date Surveyed: 1/14/09
Latest Revision
Date:

SHEET

4
OF 10

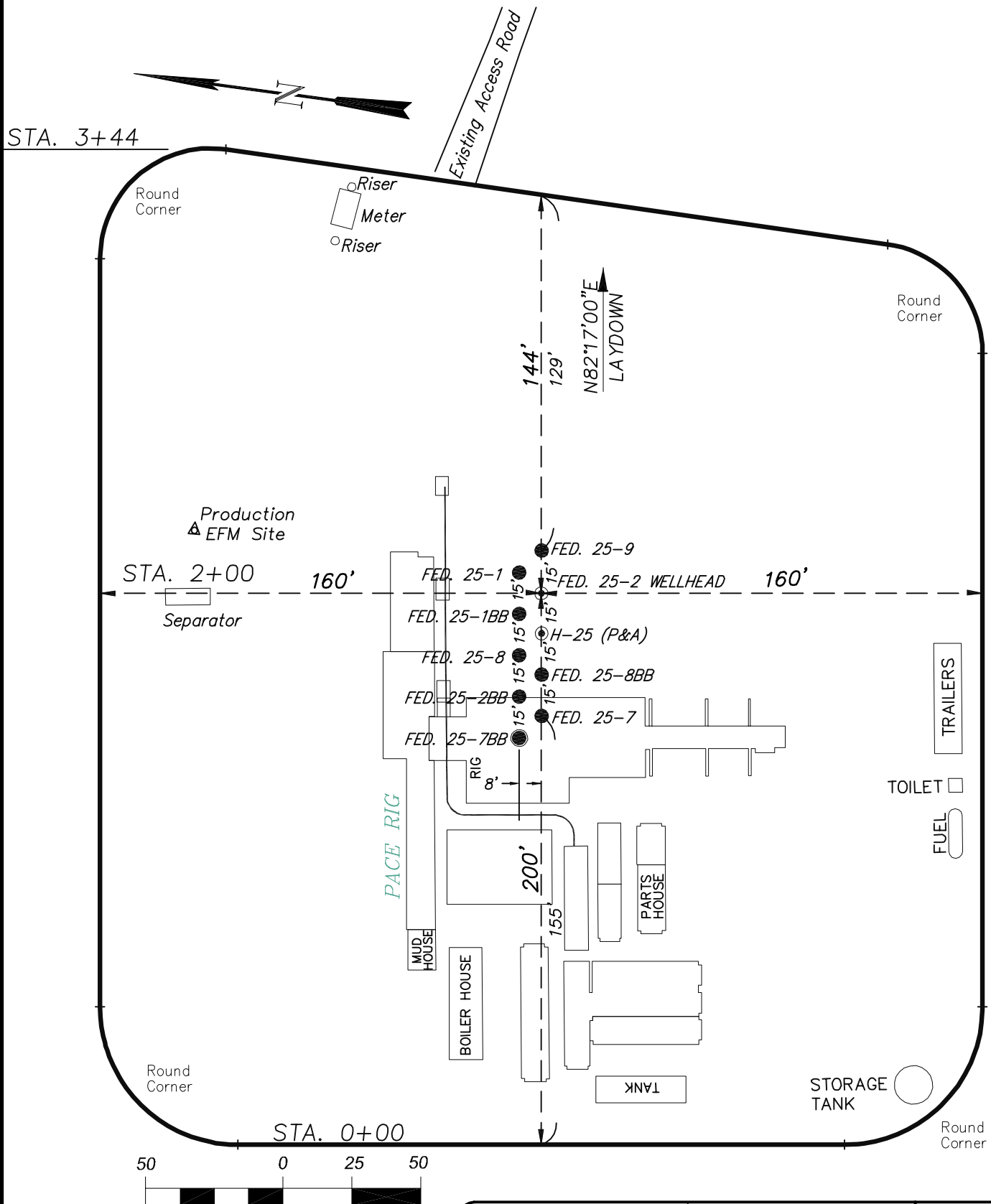


906 Main Street
Evanston, Wyoming 82930
Phone No. (307) 789-4545

EnCana Oil & Gas (USA) Inc.

Well Pad PH-25

TYPICAL RIG LAYOUT

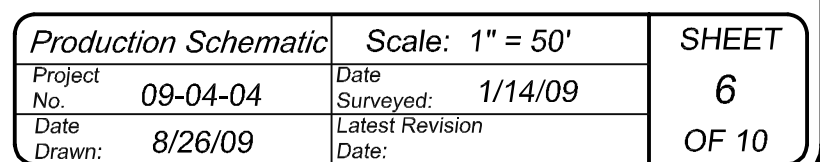


(SCALE IN FEET)



906 Main Street
Evanston, Wyoming 82930
Phone No. (307) 789-4545

Rig Layout		Scale: 1" = 50'	SHEET 5 OF 10
Project No.	09-04-04	Date Surveyed: 1/14/09	
Date	8/14/09	Latest Revision	
Drawn:		Date:	





<i>Surface Disturbance</i>		Scale: 1" = 80'	SHEET 7 OF 10
Project No.	09-04-04	Date Surveyed: 1/14/09	
Date Drawn:	8/14/09	Latest Revision Date:	