

LEGEND

- EXISTING LOCATION
- EXISTING ROAD

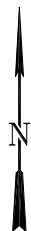
EnCana Oil & Gas (USA) Inc.

PH-25 PAD
SECTION 25, T7S, R96W, 6th, P.M.
GARFIELD COUNTY, COLORADO



Wasatch Surveying Associates

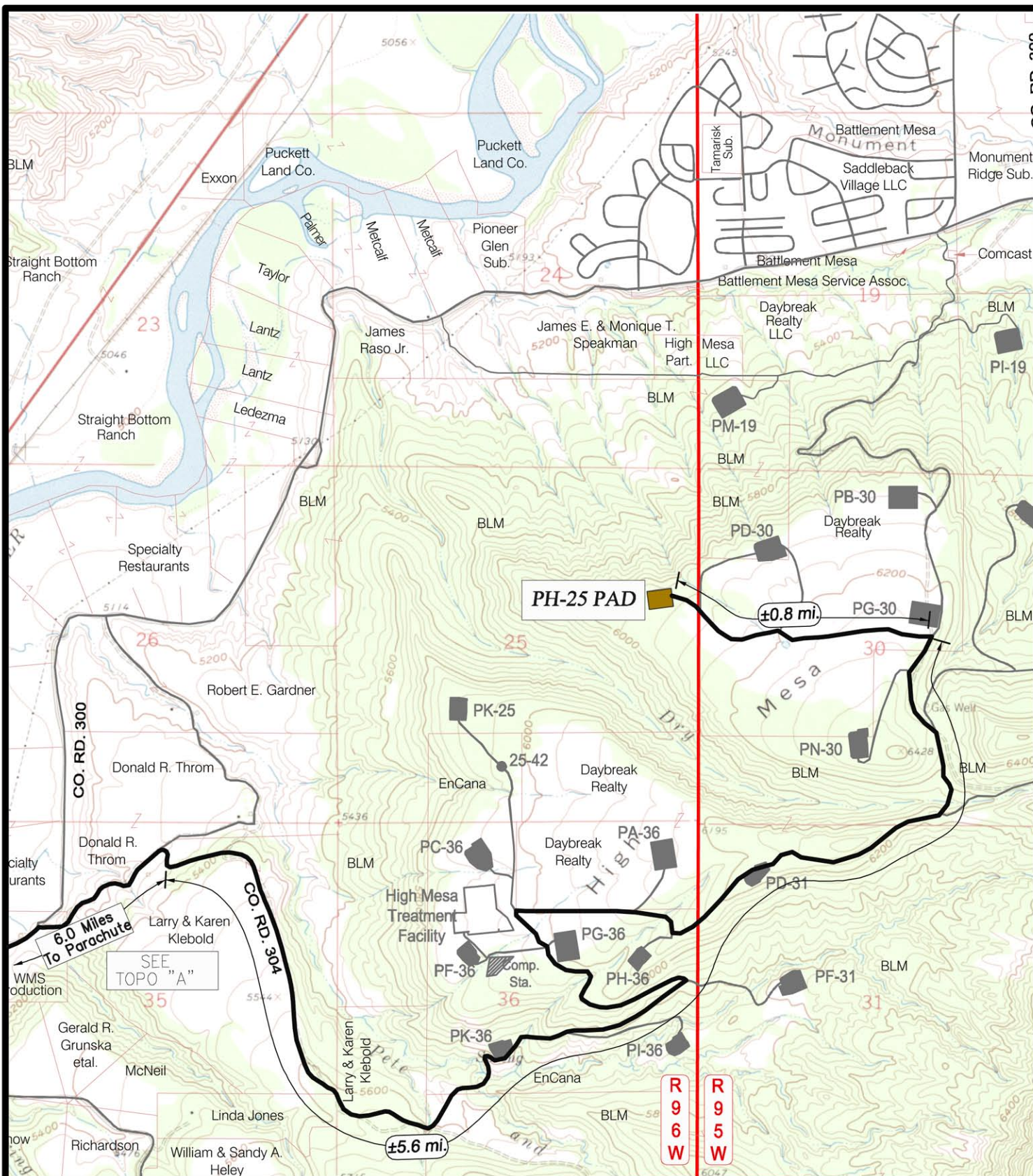
906 Main Street Evanston, Wyoming 82930
Phone No. (307) 789-4545 Fax 307-789-5722



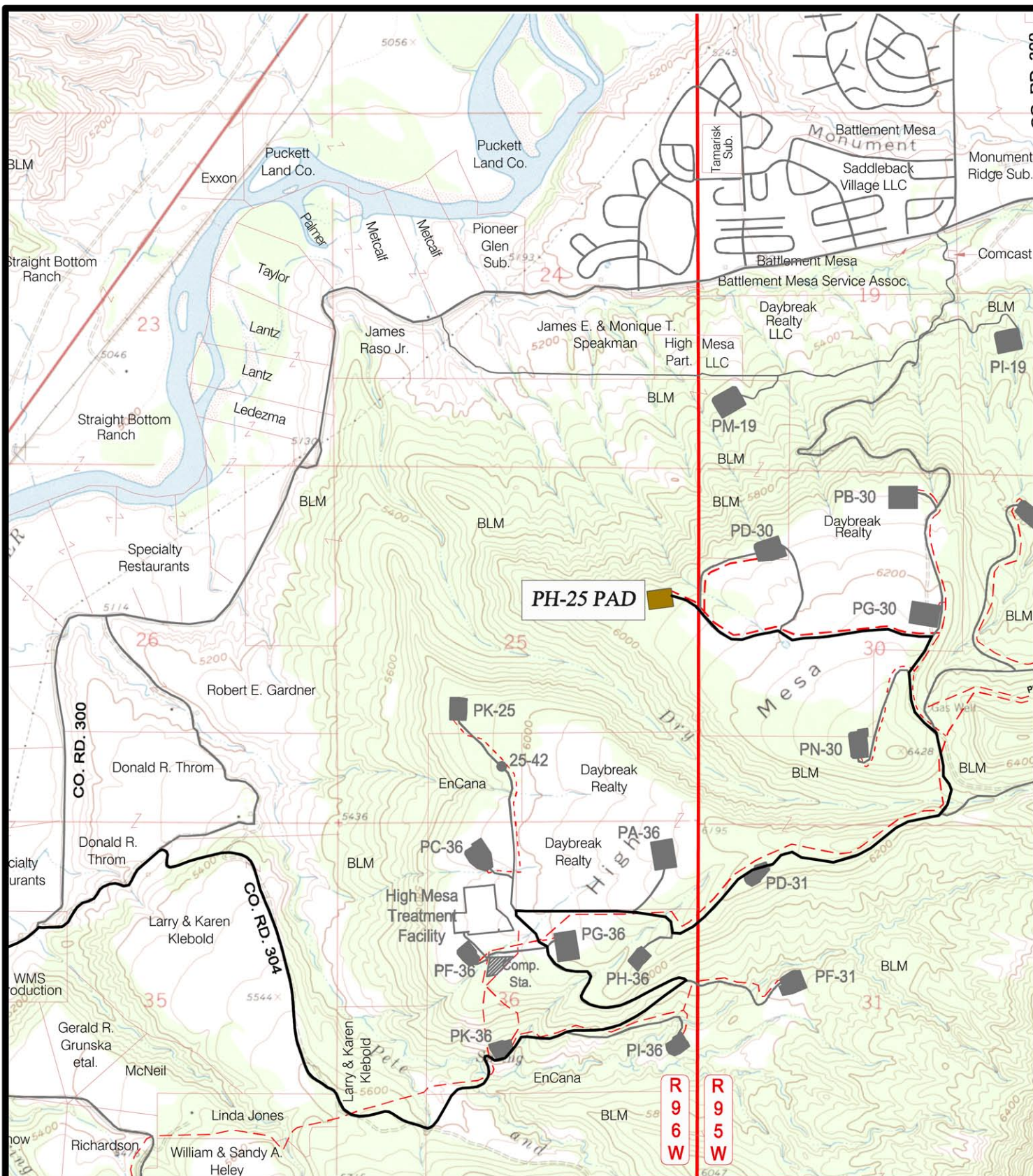
TOPO A

PROJECT NUMBER
09-04-04
DATE: 8/27/09
SCALE: 1:100,000

8
of 10



Wasatch Surveying Associates
906 Main Street Evanston, Wyoming 82930
Phone No. (307) 789-4545 Fax 307-789-5722

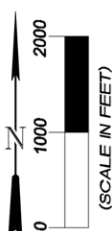


LEGEND

- PH-25 WELL PAD
- EXISTING ROAD
- EXISTING PIPELINE



Wasatch Surveying Associates
 906 Main Street Evanston, Wyoming 82930
 Phone No. (307) 789-4545 Fax 307-789-5722



EnCana Oil & Gas (USA) Inc.

PH-25 Well Pad
 SECTION 25, T7S, R96W, 6th, P.M.
 GARFIELD COUNTY, COLORADO

TOPO D

PROJECT NUMBER
 09-04-04
 DATE: 8/27/09
 SCALE: 1" = 2000'

10
 of 10