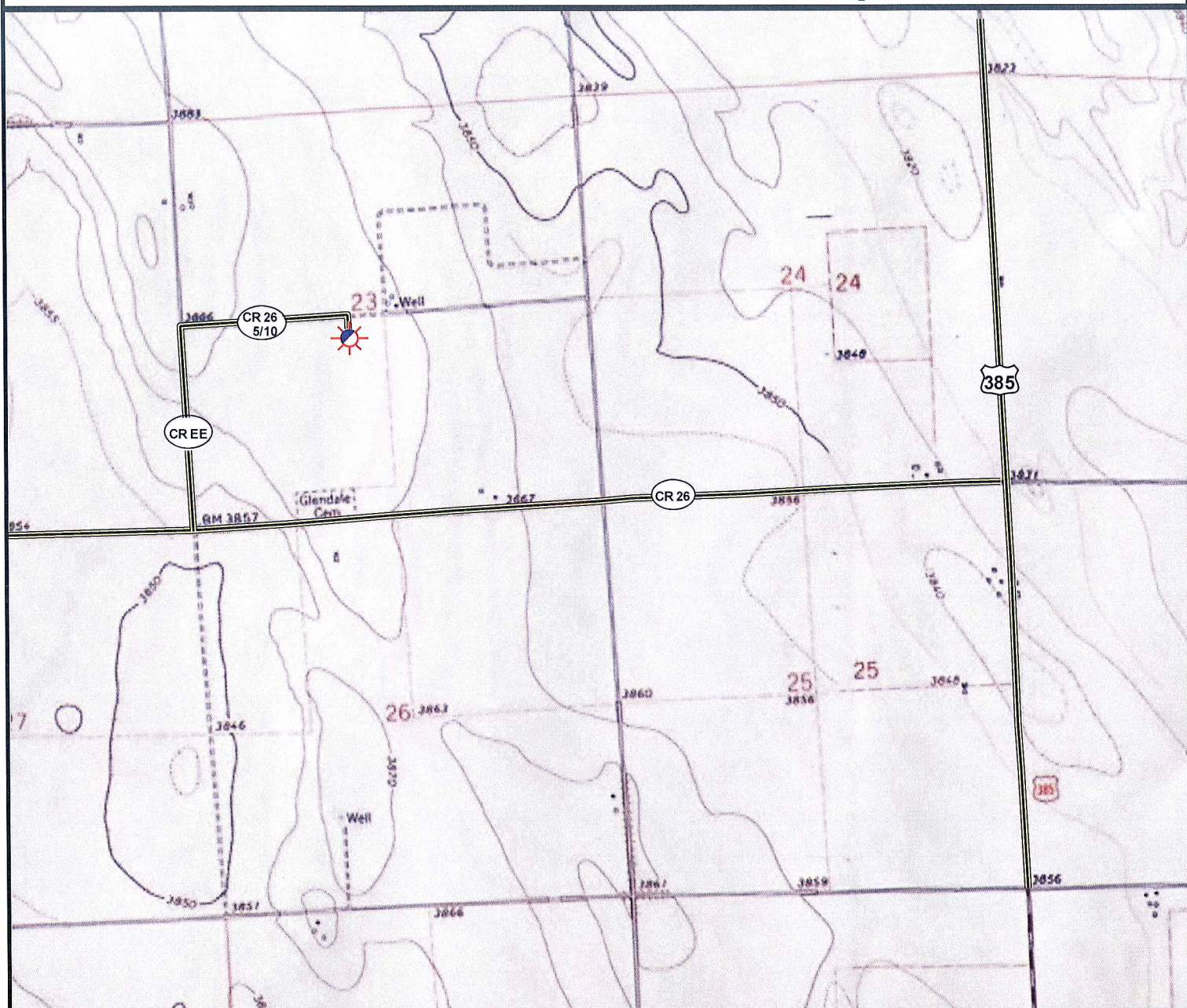


Access Road Map



0 1,000 2,000 4,000 Feet

Legend

- Proposed Well
- Existing Well
- Water Well
- Pedestal
- CattleGuard/Gate
- Bridge
- ECD
- 1000' Radius
- Facilities Enclosure
- Building/Residence
- Oil & Gas Equipment
- Water Body
- Utility Box
- Railroad
- Sewer
- Fence
- Overhead Power Line
- Pipeline
- Access Road
- Ditch/Canal

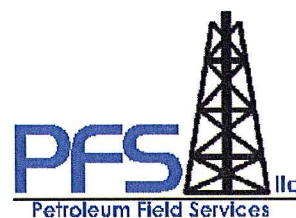
Access Road Map

SHEA 23-11

Surface Location: T1S R44W S23

Field Date: 10/15/2009
Drawing Date: 10/25/2009
Drafter: CGR
Checked By: MPS

Prepared for:
Rosetta Resources
Operating LP
717 Texas Avenue, Ste. 2800
Houston, TX 77002



Use our resources to find yours!
www.petro-fs.com

1801 W. 13th Ave Suite 207
Denver, CO 80204
(303) 928-7128
Rifle, CO 81650
(970) 625-4740