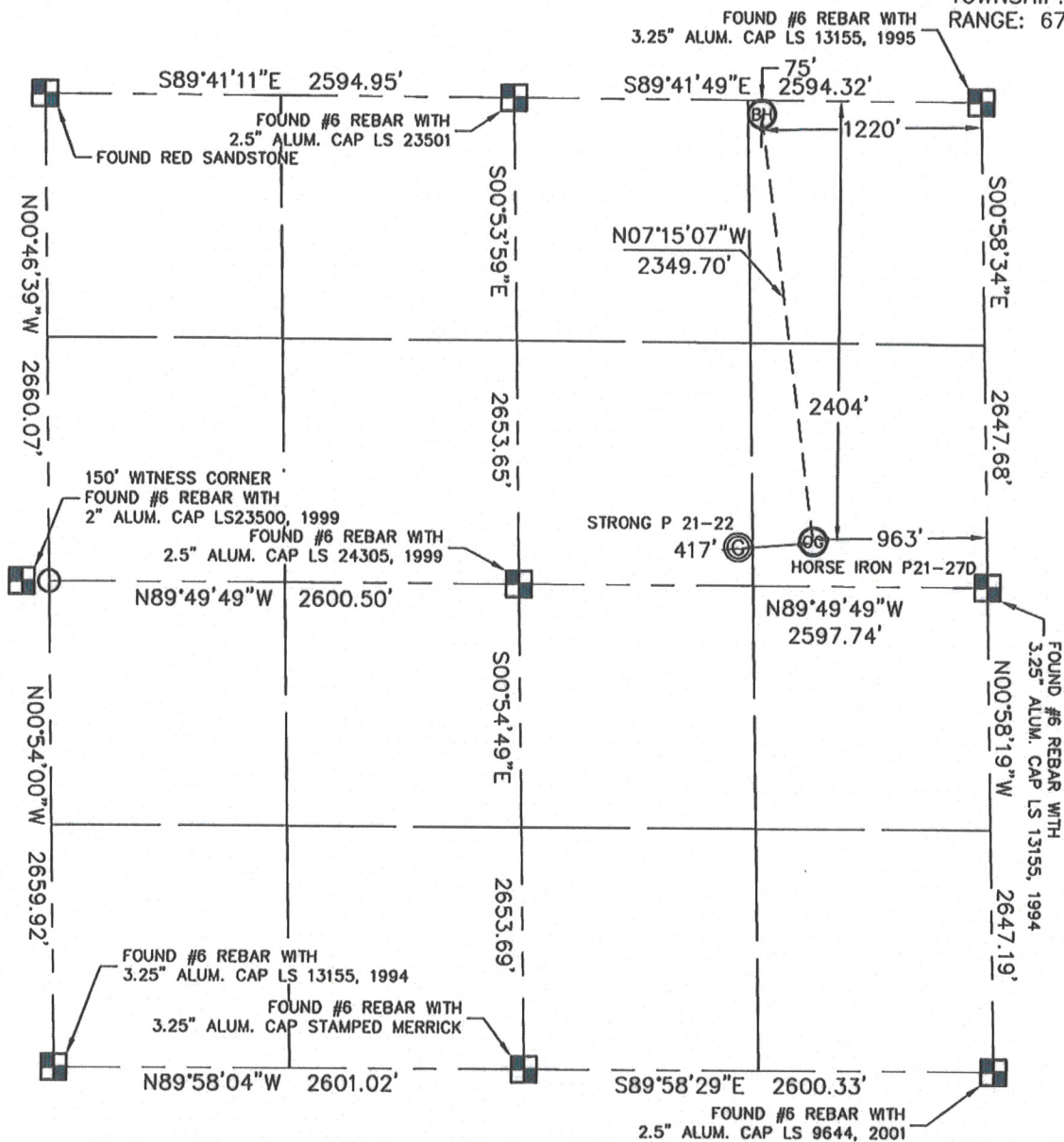


WELL LOCATION CERTIFICATE

THIS MAP DOES NOT REPRESENT A BOUNDARY SURVEY

SECTION: 21
TOWNSHIP: 3N
RANGE: 67WIn accordance with a request from Roger Lowe with Noble Energy Inc.King Surveyors Inc. has determined the surface location of the HORSE IRON P21-27D to be 2404' from the NORTH line and 963' from the EAST line and the bottom hole location to be 75' from the NORTH line and 1220' from the EAST line as measured at right angles from the section line of Section 21, Township 3 North, Range 67 West of the Sixth Principal Meridian, County of Weld, State of Colorado.I hereby state that this Well Location Certificate was prepared by me, or under my direct supervision, that the fieldwork was completed on 3-5-09, for and on behalf of Noble Energy Inc. That this is not a Land Survey Plat or an Improvement Survey Plat, and that it is not to be relied upon for establishment of fence, building, or other future improvement lines.

NOTE:

- 1) Bearings shown are Grid Bearings of the Colorado State Plane Coordinate System, North Zone, North American Datum 1983/2007. The lineal dimensions as contained herein are based upon the "U.S. Survey Foot."
- 2) Ground elevations are based on an observed GPS elevation (NAVD 1988 DATUM).
- 3) NEAREST EXISTING WELL: STRONG P21-22 417' WEST
- 4) IMPROVEMENTS: See VISIBLE IMPROVEMENTS exhibit for all visible improvements within 400' of well head.
- 5) SURFACE USE: PASTURE, GRAIN STORAGE, OIL/GAS PRODUCTION EQUIPMENT

SURFACE LOCATION

LATITUDE: 40.21191°N
 LONGITUDE: 104.88946°W
 PDOP: 2.4
 ELEV: 4790
 1/4, 1/4: SE1/4NE1/4

BOTTOM HOLE

LATITUDE: 40.21831°N
 LONGITUDE: 104.89046°W

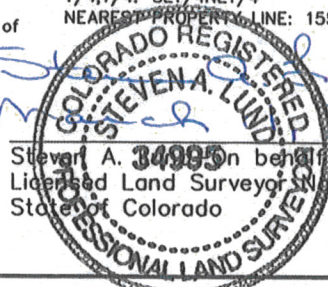
NEAREST PROPERTY LINE: 155' NORTHEAST

NOTE

According to Colorado law, you must commence any legal action based upon any defect in this W.L.C. within three years after you discover such defect. In no event, may any action based upon any defect in this survey be commenced more than ten years after the date of the certificate shown hereon. (13-80-105 C.R.S.)

LEGEND

- = ALIQUOT MONUMENT AS DESCRIBED
 = CALCULATED POSITION

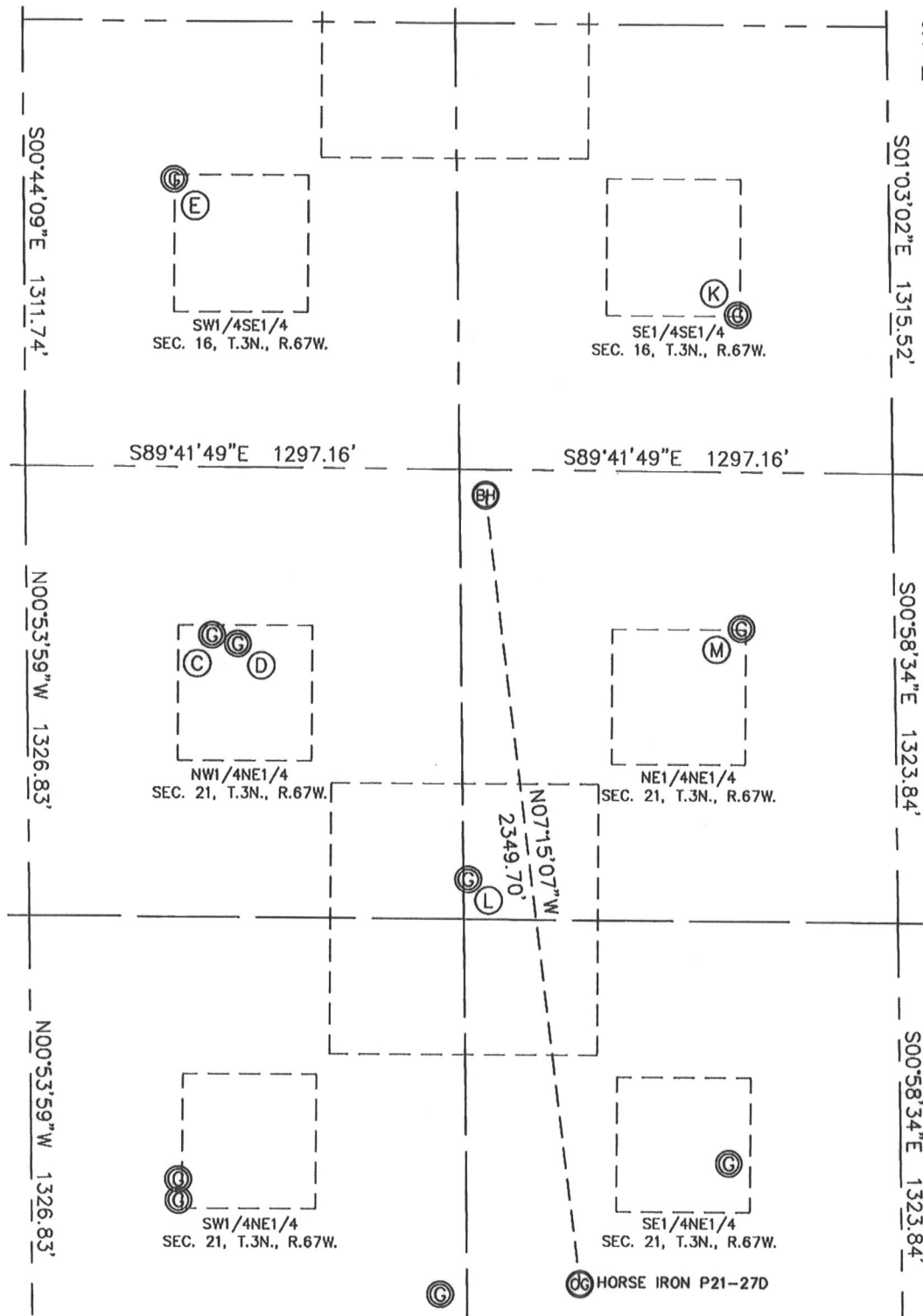


Steven A. **34995** on behalf of King Surveyors, Inc.
 Licensed Land Surveyor No. 34995
 State of Colorado

PROJECT#: 2009035

SITE SKETCH

SECTION: 21
TOWNSHIP: 3N
RANGE: 67W



(E)
HSR-DAVENPORT 15-16
SW1/4SE1/4
843' FSL
2140' FEL
LAT-40.22086°N
LONG-104.89380°W
PDOP: 1.1
ELEV: 4784

(K)
HSR-STREAR STATE 16-16A
SE1/4SE1/4
462' FSL
458' FEL
LAT-40.21976°N
LONG-104.88776°W
PDOP: 1.1
ELEV: 4797

(L)
STRONG P 21-1
NE1/4NE1/4
1206' FNL
1284' FEL
LAT-40.21521°N
LONG-104.89065°W
PDOP: 1.9
ELEV: 4788

(M)
STRONG P 21-1J
NE1/4NE1/4
459' FNL
458' FEL
LAT-40.21723°N
LONG-104.88772°W
PDOP: 1.4
ELEV: 4788

(C)
STRONG P 21-2J
NW1/4NE1/4
492' FNL
2043' FEL
LAT-40.21720°N
LONG-104.89340°W
PDOP: 1.8
ELEV: 4788

(D)
STRONG P 21-2
NW1/4NE1/4
518' FNL
1967' FEL
LAT-40.21712°N
LONG-104.89312°W
PDOP: 1.8
ELEV: 4788

Horse Iron P21-27D multi-pad
Township 3 North, Range 67 West
Section 21: SENE

