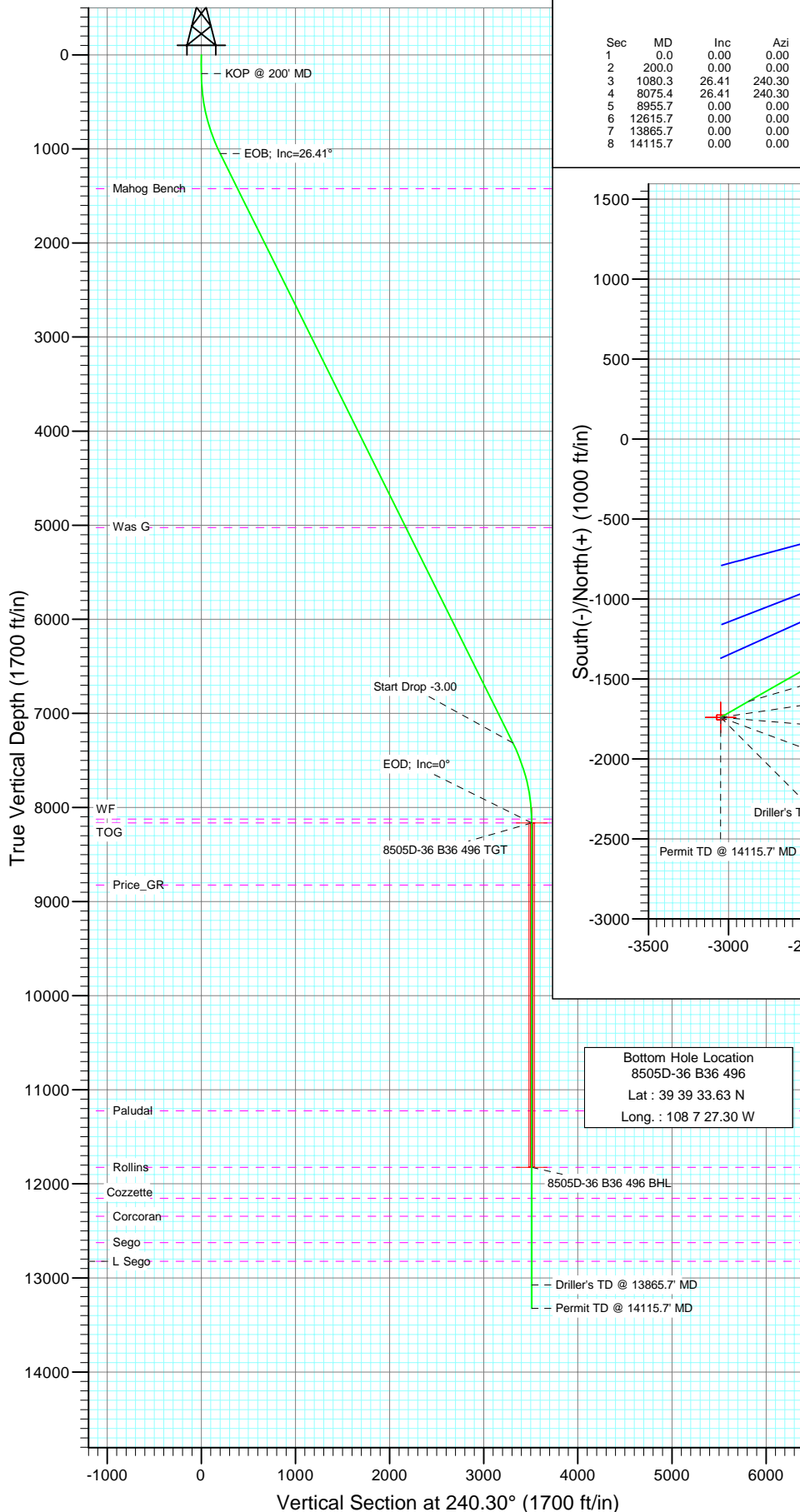
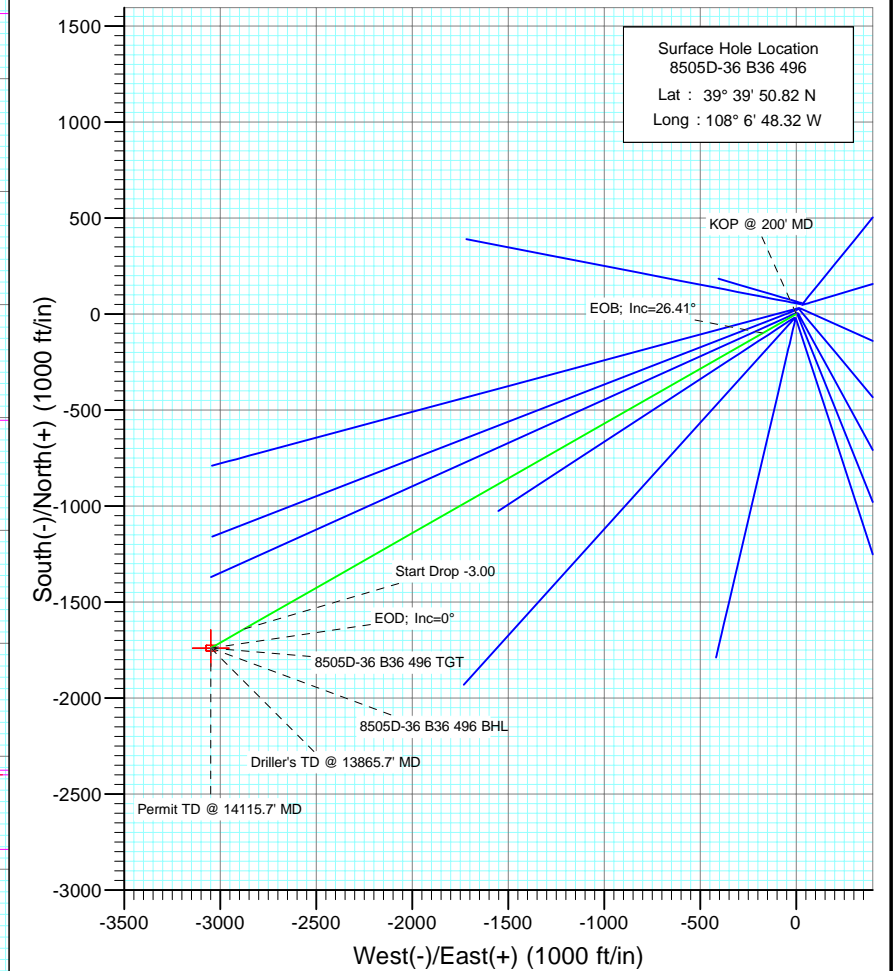




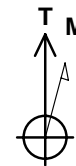
Project: Story Gulch
Site: S36-T4S-R96W (B36 496)
Well: 8505D-36 B36 496
Wellbore: DD
Design: Plan #1



SECTION DETAILS										
Sec	MD	Inc	Azi	TVD	+N/-S	+E/-W	DLeg	TFace	VSec	Target
1	0.0	0.00	0.00	0.0	0.0	0.0	0.00	0.00	0.0	
2	200.0	0.00	0.00	200.0	0.0	0.0	0.00	0.00	0.0	
3	1090.3	26.41	240.30	1049.5	-98.8	-173.1	3.00	240.30	199.3	
4	8075.4	26.41	240.30	7314.5	-1640.5	-2875.5	0.00	0.00	3310.5	
5	8955.7	0.00	0.00	8164.0	-1739.2	-3048.6	3.00	180.00	3509.9	8505D-36 B36 496 TGT
6	12615.7	0.00	0.00	11824.0	-1739.2	-3048.6	0.00	0.00	3509.9	8505D-36 B36 496 BHL
7	13865.7	0.00	0.00	13074.0	-1739.2	-3048.6	0.00	0.00	3509.9	
8	14115.7	0.00	0.00	13324.0	-1739.2	-3048.6	0.00	0.00	3509.9	



Bottom Hole Location
8505D-36 B36 496
Lat : 39 39 33.63 N
Long. : 108 7 27.30 W



Azimuths to True North
Magnetic North: 10.63°

Magnetic Field
Strength: 52512.9nT
Dip Angle: 65.91°
Date: 8/31/2009
Model: IGRF200510

FORMATION TOP DETAILS

TVDPath	MDPath	Formation
1424.0	1498.5	Mahog Bench
5024.0	5517.9	Was G
8124.0	8915.7	WF
8164.0	8955.7	TOG
8824.0	9615.7	Price_GR
11224.0	12015.7	Paludal
11824.0	12615.7	Rollins
12154.0	12945.7	Cozzette
12344.0	13135.7	Corcoran
12624.0	13415.7	Sego
12824.0	13615.7	L Sego

DESIGN DETAILS: Plan #1

95XXX: BH
KBE @ 8574.0ft (Original Well Elev)

Target	Azimuth	Origin Type	N/S	E/W	From	TVD
8505D-36 B36 496 BHL	240.30	Slot	0.0	0.0	0.0	0.0

Directional Plus

Planning Report

Database:	EDM 2003.21 US Multi User Db	Local Co-ordinate Reference:	Well 8505D-36 B36 496
Company:	EnCana Oil & Gas (USA) Inc	TVD Reference:	KBE @ 8574.0ft (Original Well Elev)
Project:	Story Gulch	MD Reference:	KBE @ 8574.0ft (Original Well Elev)
Site:	S36-T4S-R96W (B36 496)	North Reference:	True
Well:	8505D-36 B36 496	Survey Calculation Method:	Minimum Curvature
Wellbore:	DD		
Design:	Plan #1		

Project	Story Gulch		
Map System:	US State Plane 1983	System Datum:	Mean Sea Level
Geo Datum:	North American Datum 1983		
Map Zone:	Colorado Central Zone		

Site	S36-T4S-R96W (B36 496)				
Site Position:		Northing:	1,677,422.27 ft	Latitude:	39° 39' 51.36 N
From:	Lat/Long	Easting:	2,264,394.80 ft	Longitude:	108° 6' 47.88 W
Position Uncertainty:	0.0 ft	Slot Radius:	in	Grid Convergence:	-1.65 °

Well	8505D-36 B36 496					
Well Position	+N/-S	0.0 ft	Northing:	1,677,368.70 ft	Latitude:	39° 39' 50.82 N
	+E/-W	0.0 ft	Easting:	2,264,358.76 ft	Longitude:	108° 6' 48.32 W
Position Uncertainty		0.0 ft	Wellhead Elevation:	ft	Ground Level:	8,352.0 ft

Wellbore	DD				
Magnetics	Model Name	Sample Date	Declination (°)	Dip Angle (°)	Field Strength (nT)
	IGRF200510	8/31/2009	10.63	65.91	52,513

Design	Plan #1				
Audit Notes:					
Version:	Phase:	PLAN		Tie On Depth:	0.0
Vertical Section:	Depth From (TVD) (ft)	+N/-S (ft)	+E/-W (ft)	Direction (°)	
	0.0	0.0	0.0	240.30	

Plan Sections										
Measured Depth (ft)	Inclination (°)	Azimuth (°)	Vertical Depth (ft)	+N/-S (ft)	+E/-W (ft)	Dogleg Rate (°/100ft)	Build Rate (°/100ft)	Turn Rate (°/100ft)	TFO (°)	Target
0.0	0.00	0.00	0.0	0.0	0.0	0.00	0.00	0.00	0.00	
200.0	0.00	0.00	200.0	0.0	0.0	0.00	0.00	0.00	0.00	
1,080.3	26.41	240.30	1,049.5	-98.8	-173.1	3.00	3.00	0.00	240.30	
8,075.4	26.41	240.30	7,314.5	-1,640.5	-2,875.5	0.00	0.00	0.00	0.00	
8,955.7	0.00	0.00	8,164.0	-1,739.2	-3,048.6	3.00	-3.00	0.00	180.00	8505D-36 B36 496 TC
12,615.7	0.00	0.00	11,824.0	-1,739.2	-3,048.6	0.00	0.00	0.00	0.00	8505D-36 B36 496 Bf
13,865.7	0.00	0.00	13,074.0	-1,739.2	-3,048.6	0.00	0.00	0.00	0.00	
14,115.7	0.00	0.00	13,324.0	-1,739.2	-3,048.6	0.00	0.00	0.00	0.00	

Directional Plus

Planning Report

Database:	EDM 2003.21 US Multi User Db	Local Co-ordinate Reference:	Well 8505D-36 B36 496
Company:	EnCana Oil & Gas (USA) Inc	TVD Reference:	KBE @ 8574.0ft (Original Well Elev)
Project:	Story Gulch	MD Reference:	KBE @ 8574.0ft (Original Well Elev)
Site:	S36-T4S-R96W (B36 496)	North Reference:	True
Well:	8505D-36 B36 496	Survey Calculation Method:	Minimum Curvature
Wellbore:	DD		
Design:	Plan #1		

Planned Survey

Measured Depth (ft)	Inclination (°)	Azimuth (°)	Vertical Depth (ft)	+N/-S (ft)	+E/-W (ft)	Vertical Section (ft)	Dogleg Rate (°/100ft)	Build Rate (°/100ft)	Comments / Formations
0.0	0.00	0.00	0.0	0.0	0.0	0.0	0.00	0.00	
100.0	0.00	0.00	100.0	0.0	0.0	0.0	0.00	0.00	
200.0	0.00	0.00	200.0	0.0	0.0	0.0	0.00	0.00	KOP @ 200' MD
300.0	3.00	240.30	300.0	-1.3	-2.3	2.6	3.00	3.00	
400.0	6.00	240.30	399.6	-5.2	-9.1	10.5	3.00	3.00	
500.0	9.00	240.30	498.8	-11.7	-20.4	23.5	3.00	3.00	
600.0	12.00	240.30	597.1	-20.7	-36.3	41.7	3.00	3.00	
700.0	15.00	240.30	694.3	-32.2	-56.5	65.1	3.00	3.00	
800.0	18.00	240.30	790.2	-46.3	-81.2	93.5	3.00	3.00	
900.0	21.00	240.30	884.4	-62.9	-110.2	126.9	3.00	3.00	
1,000.0	24.00	240.30	976.8	-81.8	-143.4	165.1	3.00	3.00	
1,080.3	26.41	240.30	1,049.5	-98.8	-173.1	199.3	3.00	3.00	EOB; Inc=26.41°
1,100.0	26.41	240.30	1,067.1	-103.1	-180.7	208.1	0.00	0.00	
1,200.0	26.41	240.30	1,156.7	-125.1	-219.4	252.5	0.00	0.00	
1,300.0	26.41	240.30	1,246.2	-147.2	-258.0	297.0	0.00	0.00	
1,400.0	26.41	240.30	1,335.8	-169.2	-296.6	341.5	0.00	0.00	
1,498.5	26.41	240.30	1,424.0	-190.9	-334.7	385.3	0.00	0.00	Mahog Bench
1,500.0	26.41	240.30	1,425.4	-191.3	-335.3	386.0	0.00	0.00	
1,600.0	26.41	240.30	1,514.9	-213.3	-373.9	430.5	0.00	0.00	
1,700.0	26.41	240.30	1,604.5	-235.3	-412.5	474.9	0.00	0.00	
1,800.0	26.41	240.30	1,694.1	-257.4	-451.2	519.4	0.00	0.00	
1,900.0	26.41	240.30	1,783.6	-279.4	-489.8	563.9	0.00	0.00	
2,000.0	26.41	240.30	1,873.2	-301.5	-528.4	608.4	0.00	0.00	
2,100.0	26.41	240.30	1,962.7	-323.5	-567.1	652.8	0.00	0.00	
2,200.0	26.41	240.30	2,052.3	-345.5	-605.7	697.3	0.00	0.00	
2,300.0	26.41	240.30	2,141.9	-367.6	-644.3	741.8	0.00	0.00	
2,400.0	26.41	240.30	2,231.4	-389.6	-683.0	786.3	0.00	0.00	
2,500.0	26.41	240.30	2,321.0	-411.7	-721.6	830.8	0.00	0.00	
2,600.0	26.41	240.30	2,410.6	-433.7	-760.2	875.2	0.00	0.00	
2,700.0	26.41	240.30	2,500.1	-455.7	-798.9	919.7	0.00	0.00	
2,800.0	26.41	240.30	2,589.7	-477.8	-837.5	964.2	0.00	0.00	
2,900.0	26.41	240.30	2,679.3	-499.8	-876.1	1,008.7	0.00	0.00	
3,000.0	26.41	240.30	2,768.8	-521.9	-914.8	1,053.1	0.00	0.00	
3,100.0	26.41	240.30	2,858.4	-543.9	-953.4	1,097.6	0.00	0.00	
3,200.0	26.41	240.30	2,948.0	-565.9	-992.0	1,142.1	0.00	0.00	
3,300.0	26.41	240.30	3,037.5	-588.0	-1,030.7	1,186.6	0.00	0.00	
3,400.0	26.41	240.30	3,127.1	-610.0	-1,069.3	1,231.1	0.00	0.00	
3,500.0	26.41	240.30	3,216.6	-632.1	-1,107.9	1,275.5	0.00	0.00	
3,600.0	26.41	240.30	3,306.2	-654.1	-1,146.6	1,320.0	0.00	0.00	
3,700.0	26.41	240.30	3,395.8	-676.1	-1,185.2	1,364.5	0.00	0.00	
3,800.0	26.41	240.30	3,485.3	-698.2	-1,223.8	1,409.0	0.00	0.00	
3,900.0	26.41	240.30	3,574.9	-720.2	-1,262.4	1,453.4	0.00	0.00	
4,000.0	26.41	240.30	3,664.5	-742.3	-1,301.1	1,497.9	0.00	0.00	
4,100.0	26.41	240.30	3,754.0	-764.3	-1,339.7	1,542.4	0.00	0.00	
4,200.0	26.41	240.30	3,843.6	-786.3	-1,378.3	1,586.9	0.00	0.00	
4,300.0	26.41	240.30	3,933.2	-808.4	-1,417.0	1,631.4	0.00	0.00	
4,400.0	26.41	240.30	4,022.7	-830.4	-1,455.6	1,675.8	0.00	0.00	
4,500.0	26.41	240.30	4,112.3	-852.5	-1,494.2	1,720.3	0.00	0.00	
4,600.0	26.41	240.30	4,201.9	-874.5	-1,532.9	1,764.8	0.00	0.00	
4,700.0	26.41	240.30	4,291.4	-896.5	-1,571.5	1,809.3	0.00	0.00	
4,800.0	26.41	240.30	4,381.0	-918.6	-1,610.1	1,853.7	0.00	0.00	
4,900.0	26.41	240.30	4,470.5	-940.6	-1,648.8	1,898.2	0.00	0.00	

Directional Plus

Planning Report

Database:	EDM 2003.21 US Multi User Db	Local Co-ordinate Reference:	Well 8505D-36 B36 496
Company:	EnCana Oil & Gas (USA) Inc	TVD Reference:	KBE @ 8574.0ft (Original Well Elev)
Project:	Story Gulch	MD Reference:	KBE @ 8574.0ft (Original Well Elev)
Site:	S36-T4S-R96W (B36 496)	North Reference:	True
Well:	8505D-36 B36 496	Survey Calculation Method:	Minimum Curvature
Wellbore:	DD		
Design:	Plan #1		

Planned Survey									
Measured Depth (ft)	Inclination (°)	Azimuth (°)	Vertical Depth (ft)	+N/-S (ft)	+E/-W (ft)	Vertical Section (ft)	Dogleg Rate (°/100ft)	Build Rate (°/100ft)	Comments / Formations
5,000.0	26.41	240.30	4,560.1	-962.7	-1,687.4	1,942.7	0.00	0.00	
5,100.0	26.41	240.30	4,649.7	-984.7	-1,726.0	1,987.2	0.00	0.00	
5,200.0	26.41	240.30	4,739.2	-1,006.7	-1,764.7	2,031.6	0.00	0.00	
5,300.0	26.41	240.30	4,828.8	-1,028.8	-1,803.3	2,076.1	0.00	0.00	
5,400.0	26.41	240.30	4,918.4	-1,050.8	-1,841.9	2,120.6	0.00	0.00	
5,500.0	26.41	240.30	5,007.9	-1,072.9	-1,880.6	2,165.1	0.00	0.00	
5,517.9	26.41	240.30	5,024.0	-1,076.8	-1,887.5	2,173.1	0.00	0.00	Was G
5,600.0	26.41	240.30	5,097.5	-1,094.9	-1,919.2	2,209.6	0.00	0.00	
5,700.0	26.41	240.30	5,187.1	-1,116.9	-1,957.8	2,254.0	0.00	0.00	
5,800.0	26.41	240.30	5,276.6	-1,139.0	-1,996.5	2,298.5	0.00	0.00	
5,900.0	26.41	240.30	5,366.2	-1,161.0	-2,035.1	2,343.0	0.00	0.00	
6,000.0	26.41	240.30	5,455.8	-1,183.1	-2,073.7	2,387.5	0.00	0.00	
6,100.0	26.41	240.30	5,545.3	-1,205.1	-2,112.4	2,431.9	0.00	0.00	
6,200.0	26.41	240.30	5,634.9	-1,227.1	-2,151.0	2,476.4	0.00	0.00	
6,300.0	26.41	240.30	5,724.4	-1,249.2	-2,189.6	2,520.9	0.00	0.00	
6,400.0	26.41	240.30	5,814.0	-1,271.2	-2,228.3	2,565.4	0.00	0.00	
6,500.0	26.41	240.30	5,903.6	-1,293.3	-2,266.9	2,609.9	0.00	0.00	
6,600.0	26.41	240.30	5,993.1	-1,315.3	-2,305.5	2,654.3	0.00	0.00	
6,700.0	26.41	240.30	6,082.7	-1,337.3	-2,344.2	2,698.8	0.00	0.00	
6,800.0	26.41	240.30	6,172.3	-1,359.4	-2,382.8	2,743.3	0.00	0.00	
6,900.0	26.41	240.30	6,261.8	-1,381.4	-2,421.4	2,787.8	0.00	0.00	
7,000.0	26.41	240.30	6,351.4	-1,403.5	-2,460.1	2,832.2	0.00	0.00	
7,100.0	26.41	240.30	6,441.0	-1,425.5	-2,498.7	2,876.7	0.00	0.00	
7,200.0	26.41	240.30	6,530.5	-1,447.5	-2,537.3	2,921.2	0.00	0.00	
7,300.0	26.41	240.30	6,620.1	-1,469.6	-2,576.0	2,965.7	0.00	0.00	
7,400.0	26.41	240.30	6,709.7	-1,491.6	-2,614.6	3,010.2	0.00	0.00	
7,500.0	26.41	240.30	6,799.2	-1,513.6	-2,653.2	3,054.6	0.00	0.00	
7,600.0	26.41	240.30	6,888.8	-1,535.7	-2,691.9	3,099.1	0.00	0.00	
7,700.0	26.41	240.30	6,978.3	-1,557.7	-2,730.5	3,143.6	0.00	0.00	
7,800.0	26.41	240.30	7,067.9	-1,579.8	-2,769.1	3,188.1	0.00	0.00	
7,900.0	26.41	240.30	7,157.5	-1,601.8	-2,807.8	3,232.5	0.00	0.00	
8,000.0	26.41	240.30	7,247.0	-1,623.8	-2,846.4	3,277.0	0.00	0.00	
8,075.4	26.41	240.30	7,314.5	-1,640.5	-2,875.5	3,310.5	0.00	0.00	Start Drop -3.00
8,100.0	25.67	240.30	7,336.7	-1,645.8	-2,884.9	3,321.4	3.00	-3.00	
8,200.0	22.67	240.30	7,427.9	-1,666.1	-2,920.5	3,362.3	3.00	-3.00	
8,300.0	19.67	240.30	7,521.1	-1,684.0	-2,951.8	3,398.4	3.00	-3.00	
8,400.0	16.67	240.30	7,616.1	-1,699.4	-2,978.9	3,429.6	3.00	-3.00	
8,500.0	13.67	240.30	7,712.6	-1,712.4	-3,001.6	3,455.7	3.00	-3.00	
8,600.0	10.67	240.30	7,810.4	-1,722.9	-3,019.9	3,476.8	3.00	-3.00	
8,700.0	7.67	240.30	7,909.1	-1,730.8	-3,033.8	3,492.8	3.00	-3.00	
8,800.0	4.67	240.30	8,008.5	-1,736.1	-3,043.1	3,503.5	3.00	-3.00	
8,900.0	1.67	240.30	8,108.3	-1,738.8	-3,047.9	3,509.0	3.00	-3.00	
8,915.7	1.20	240.30	8,124.0	-1,739.0	-3,048.3	3,509.4	3.00	-3.00	WF
8,955.7	0.00	0.00	8,164.0	-1,739.2	-3,048.6	3,509.9	3.00	-3.00	EOD; Inc=0° - TOG - 8505D-36 B36 496 TGT
9,000.0	0.00	0.00	8,208.3	-1,739.2	-3,048.6	3,509.9	0.00	0.00	
9,100.0	0.00	0.00	8,308.3	-1,739.2	-3,048.6	3,509.9	0.00	0.00	
9,200.0	0.00	0.00	8,408.3	-1,739.2	-3,048.6	3,509.9	0.00	0.00	
9,300.0	0.00	0.00	8,508.3	-1,739.2	-3,048.6	3,509.9	0.00	0.00	
9,400.0	0.00	0.00	8,608.3	-1,739.2	-3,048.6	3,509.9	0.00	0.00	
9,500.0	0.00	0.00	8,708.3	-1,739.2	-3,048.6	3,509.9	0.00	0.00	
9,600.0	0.00	0.00	8,808.3	-1,739.2	-3,048.6	3,509.9	0.00	0.00	
9,615.7	0.00	0.00	8,824.0	-1,739.2	-3,048.6	3,509.9	0.00	0.00	Price_GR

Directional Plus

Planning Report

Database:	EDM 2003.21 US Multi User Db	Local Co-ordinate Reference:	Well 8505D-36 B36 496
Company:	EnCana Oil & Gas (USA) Inc	TVD Reference:	KBE @ 8574.0ft (Original Well Elev)
Project:	Story Gulch	MD Reference:	KBE @ 8574.0ft (Original Well Elev)
Site:	S36-T4S-R96W (B36 496)	North Reference:	True
Well:	8505D-36 B36 496	Survey Calculation Method:	Minimum Curvature
Wellbore:	DD		
Design:	Plan #1		

Planned Survey									
Measured Depth (ft)	Inclination (°)	Azimuth (°)	Vertical Depth (ft)	+N/-S (ft)	+E/-W (ft)	Vertical Section (ft)	Dogleg Rate (°/100ft)	Build Rate (°/100ft)	Comments / Formations
9,700.0	0.00	0.00	8,908.3	-1,739.2	-3,048.6	3,509.9	0.00	0.00	
9,800.0	0.00	0.00	9,008.3	-1,739.2	-3,048.6	3,509.9	0.00	0.00	
9,900.0	0.00	0.00	9,108.3	-1,739.2	-3,048.6	3,509.9	0.00	0.00	
10,000.0	0.00	0.00	9,208.3	-1,739.2	-3,048.6	3,509.9	0.00	0.00	
10,100.0	0.00	0.00	9,308.3	-1,739.2	-3,048.6	3,509.9	0.00	0.00	
10,200.0	0.00	0.00	9,408.3	-1,739.2	-3,048.6	3,509.9	0.00	0.00	
10,300.0	0.00	0.00	9,508.3	-1,739.2	-3,048.6	3,509.9	0.00	0.00	
10,400.0	0.00	0.00	9,608.3	-1,739.2	-3,048.6	3,509.9	0.00	0.00	
10,500.0	0.00	0.00	9,708.3	-1,739.2	-3,048.6	3,509.9	0.00	0.00	
10,600.0	0.00	0.00	9,808.3	-1,739.2	-3,048.6	3,509.9	0.00	0.00	
10,700.0	0.00	0.00	9,908.3	-1,739.2	-3,048.6	3,509.9	0.00	0.00	
10,800.0	0.00	0.00	10,008.3	-1,739.2	-3,048.6	3,509.9	0.00	0.00	
10,900.0	0.00	0.00	10,108.3	-1,739.2	-3,048.6	3,509.9	0.00	0.00	
11,000.0	0.00	0.00	10,208.3	-1,739.2	-3,048.6	3,509.9	0.00	0.00	
11,100.0	0.00	0.00	10,308.3	-1,739.2	-3,048.6	3,509.9	0.00	0.00	
11,200.0	0.00	0.00	10,408.3	-1,739.2	-3,048.6	3,509.9	0.00	0.00	
11,300.0	0.00	0.00	10,508.3	-1,739.2	-3,048.6	3,509.9	0.00	0.00	
11,400.0	0.00	0.00	10,608.3	-1,739.2	-3,048.6	3,509.9	0.00	0.00	
11,500.0	0.00	0.00	10,708.3	-1,739.2	-3,048.6	3,509.9	0.00	0.00	
11,600.0	0.00	0.00	10,808.3	-1,739.2	-3,048.6	3,509.9	0.00	0.00	
11,700.0	0.00	0.00	10,908.3	-1,739.2	-3,048.6	3,509.9	0.00	0.00	
11,800.0	0.00	0.00	11,008.3	-1,739.2	-3,048.6	3,509.9	0.00	0.00	
11,900.0	0.00	0.00	11,108.3	-1,739.2	-3,048.6	3,509.9	0.00	0.00	
12,000.0	0.00	0.00	11,208.3	-1,739.2	-3,048.6	3,509.9	0.00	0.00	
12,015.7	0.00	0.00	11,224.0	-1,739.2	-3,048.6	3,509.9	0.00	0.00	Paludal
12,100.0	0.00	0.00	11,308.3	-1,739.2	-3,048.6	3,509.9	0.00	0.00	
12,200.0	0.00	0.00	11,408.3	-1,739.2	-3,048.6	3,509.9	0.00	0.00	
12,300.0	0.00	0.00	11,508.3	-1,739.2	-3,048.6	3,509.9	0.00	0.00	
12,400.0	0.00	0.00	11,608.3	-1,739.2	-3,048.6	3,509.9	0.00	0.00	
12,500.0	0.00	0.00	11,708.3	-1,739.2	-3,048.6	3,509.9	0.00	0.00	
12,600.0	0.00	0.00	11,808.3	-1,739.2	-3,048.6	3,509.9	0.00	0.00	
12,615.7	0.00	0.00	11,824.0	-1,739.2	-3,048.6	3,509.9	0.00	0.00	Rollins - 8505D-36 B36 496 BHL
12,700.0	0.00	0.00	11,908.3	-1,739.2	-3,048.6	3,509.9	0.00	0.00	
12,800.0	0.00	0.00	12,008.3	-1,739.2	-3,048.6	3,509.9	0.00	0.00	
12,900.0	0.00	0.00	12,108.3	-1,739.2	-3,048.6	3,509.9	0.00	0.00	
12,945.7	0.00	0.00	12,154.0	-1,739.2	-3,048.6	3,509.9	0.00	0.00	Cozzette
13,000.0	0.00	0.00	12,208.3	-1,739.2	-3,048.6	3,509.9	0.00	0.00	
13,100.0	0.00	0.00	12,308.3	-1,739.2	-3,048.6	3,509.9	0.00	0.00	
13,135.7	0.00	0.00	12,344.0	-1,739.2	-3,048.6	3,509.9	0.00	0.00	Corcoran
13,200.0	0.00	0.00	12,408.3	-1,739.2	-3,048.6	3,509.9	0.00	0.00	
13,300.0	0.00	0.00	12,508.3	-1,739.2	-3,048.6	3,509.9	0.00	0.00	
13,400.0	0.00	0.00	12,608.3	-1,739.2	-3,048.6	3,509.9	0.00	0.00	
13,415.7	0.00	0.00	12,624.0	-1,739.2	-3,048.6	3,509.9	0.00	0.00	Sego
13,500.0	0.00	0.00	12,708.3	-1,739.2	-3,048.6	3,509.9	0.00	0.00	
13,600.0	0.00	0.00	12,808.3	-1,739.2	-3,048.6	3,509.9	0.00	0.00	
13,615.7	0.00	0.00	12,824.0	-1,739.2	-3,048.6	3,509.9	0.00	0.00	L Sego
13,700.0	0.00	0.00	12,908.3	-1,739.2	-3,048.6	3,509.9	0.00	0.00	
13,800.0	0.00	0.00	13,008.3	-1,739.2	-3,048.6	3,509.9	0.00	0.00	
13,865.7	0.00	0.00	13,074.0	-1,739.2	-3,048.6	3,509.9	0.00	0.00	Driller's TD @ 13865.7' MD
13,900.0	0.00	0.00	13,108.3	-1,739.2	-3,048.6	3,509.9	0.00	0.00	
14,000.0	0.00	0.00	13,208.3	-1,739.2	-3,048.6	3,509.9	0.00	0.00	
14,100.0	0.00	0.00	13,308.3	-1,739.2	-3,048.6	3,509.9	0.00	0.00	

Directional Plus

Planning Report

Database:	EDM 2003.21 US Multi User Db	Local Co-ordinate Reference:	Well 8505D-36 B36 496
Company:	EnCana Oil & Gas (USA) Inc	TVD Reference:	KBE @ 8574.0ft (Original Well Elev)
Project:	Story Gulch	MD Reference:	KBE @ 8574.0ft (Original Well Elev)
Site:	S36-T4S-R96W (B36 496)	North Reference:	True
Well:	8505D-36 B36 496	Survey Calculation Method:	Minimum Curvature
Wellbore:	DD		
Design:	Plan #1		

Planned Survey									
Measured Depth (ft)	Inclination (°)	Azimuth (°)	Vertical Depth (ft)	+N/-S (ft)	+E/-W (ft)	Vertical Section (ft)	Dogleg Rate (°/100ft)	Build Rate (°/100ft)	Comments / Formations
14,115.7	0.00	0.00	13,324.0	-1,739.2	-3,048.6	3,509.9	0.00	0.00	

Targets									
Target Name	Dip Angle (°)	Dip Dir. (°)	TVD (ft)	+N/-S (ft)	+E/-W (ft)	Northing (ft)	Easting (ft)	Latitude	Longitude
- hit/miss target									
- Shape									
8505D-36 B36 496 BHL	0.00	0.00	11,824.0	-1,739.2	-3,048.6	1,675,717.88	2,261,261.36	39° 39' 33.63 N	108° 7' 27.30 W
- plan hits target center									
- Rectangle (sides W30.0 H50.0 D0.0)									
8505D-36 B36 496 TGT	0.00	0.00	8,164.0	-1,739.2	-3,048.6	1,675,717.88	2,261,261.36	39° 39' 33.63 N	108° 7' 27.30 W
- plan hits target center									
- Point									

Formations						
Measured Depth (ft)	Vertical Depth (ft)	Name	Lithology	Dip (°)	Dip Direction (°)	
1,498.5	1,424.0	Mahog Bench		0.00		
5,517.9	5,024.0	Was G		0.00		
8,915.7	8,124.0	WF		0.00		
8,955.7	8,164.0	TOG		0.00		
9,615.7	8,824.0	Price_GR		0.00		
12,015.7	11,224.0	Paludal		0.00		
12,615.7	11,824.0	Rollins		0.00		
12,945.7	12,154.0	Cozzette		0.00		
13,135.7	12,344.0	Corcoran		0.00		
13,415.7	12,624.0	Sego		0.00		
13,615.7	12,824.0	L Sego		0.00		

Plan Annotations					
Measured Depth (ft)	Vertical Depth (ft)	Local Coordinates			
		+N/-S (ft)	+E/-W (ft)	Comment	
200.0	200.0	0.0	0.0	KOP @ 200' MD	
1,080.3	1,049.5	-98.8	-173.1	EOB; Inc=26.41°	
8,075.4	7,314.5	-1,640.5	-2,875.5	Start Drop -3.00	
8,955.7	8,164.0	-1,739.2	-3,048.6	EOD; Inc=0°	
13,865.7	13,074.0	-1,739.2	-3,048.6	Driller's TD @ 13865.7' MD	
14,115.7	13,324.0	-1,739.2	-3,048.6	Permit TD @ 14115.7' MD	