

T1N, R98W, 6th P.M.

N89°35'W 40.00 (G.L.O.)
N89°38'30"W - 2641.61' (Meas.)
N89°34'W 39.95 (G.L.O.)
N89°37'10"W - 2636.26' (Meas.)

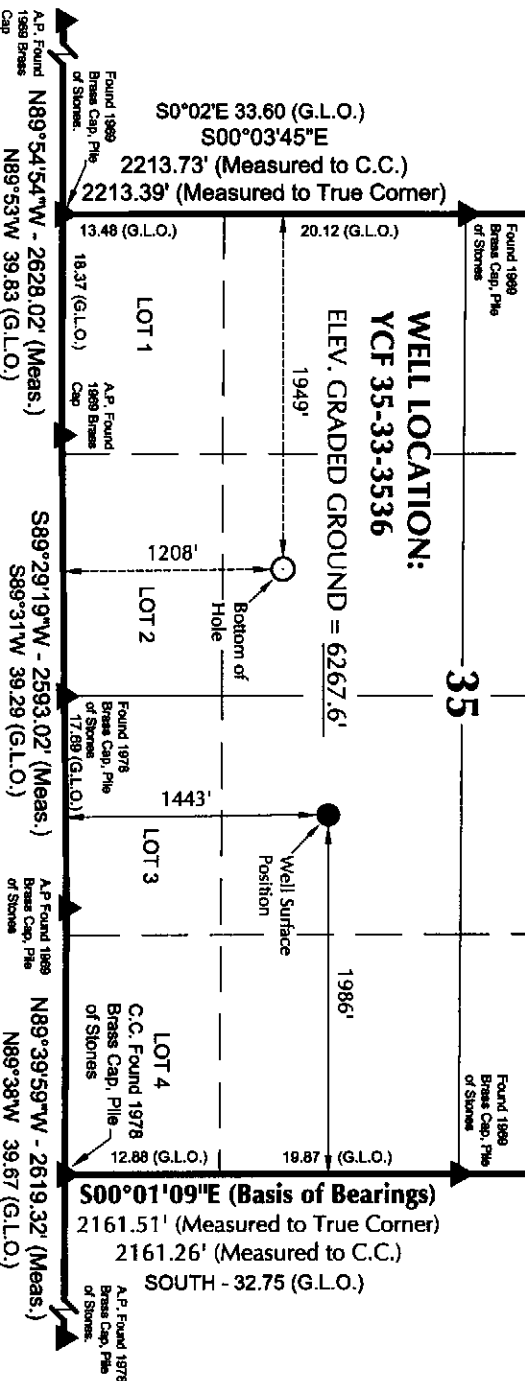
NOTES:
Surface use of location is grazing.
Vegetation consists mainly of sagebrush,
cedar, and native grasses.

NOTES:
See Addendum To Legal Plat For Existing
Improvements Within 400' of The Proposed
Well Head.

YCF 35-33-3536
(Surface Position) NAD 83
LATITUDE = 40.00961°N (40° 00' 34.58"N)
LONGITUDE = 108.35651°W (108° 21' 23.44"W)
Operator: Brock Slaugh / PDOP = 1.5

YCF 35-33-3536
(Bottom Hole) NAD 83
LATITUDE = 40.00893°N (40° 00' 32.15"N)
LONGITUDE = 108.36130°W (108° 21' 40.68"W)

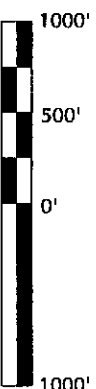
N00°03'06"W - 2642.06' (Meas.)
N0°01'W 40.03 (G.L.O.)



NOTES:

- ▲ = Section Corners Located
1. Well footages are measured at right angles to the Section Lines.
2. G.L.O. distances are shown in feet or chains. 1 chain = 66 feet.
3. The Bottom of hole bears S79°34'27"W 1364.22' from the Surface Position.
4. Bearings are based on Global Positioning Satellite observations.
5. BASIS OF ELEVATION IS A SPOT ELEVATION AT A ROAD INTERSECTION LOCATED IN THE SW 1/4 NE 1/4 OF SECTION 32, T1N, R98W, 6th P.M. THE ELEVATION OF THIS ROAD INTERSECTION IS MARKED ON THE BARCUS CREEK 7.5 MIN. QUADRANGLE AS BEING 6727'.

Nearest Well Bore 35-33-1 = 1,362 Feet
Nearest Lease Line = 1,208 Feet



SCALE

SURVEYOR'S CERTIFICATE

THIS IS TO CERTIFY THAT THE ABOVE PLAT WAS PREPARED FROM FIELD NOTES OF A SURVEY MADE BY ME OR UNDER MY SUPERVISION AND THAT THE SAME ARE TRUE AND CORRECT TO THE BEST OF MY KNOWLEDGE AND BELIEF.

REGISTERED LAND SURVEYOR
REGISTRATION NO. 37982
STATE OF COLORADO LAND

BOPCO, L.P.

WELL PAD - YCF 35-33-1

WELL PLAT

YCF 35-33-3536

1208' FSL, 1949' FWL (Bottom Hole)

NE 1/4 SW 1/4 OF SECTION 35, T1N, R98W,

6th P.M., RIO BLANCO COUNTY, COLORADO.

TIMBERLINE

ENGINEERING & LAND SURVEYING, INC.

209 NORTH 300 WEST - VERNAL, UTAH 84078

(435) 789-1365

DATE SURVEYED:

10-07-09

SURVEYED BY: B.J.S.

DATE DRAWN:

10-07-09

DRAWN BY: M.W.W.

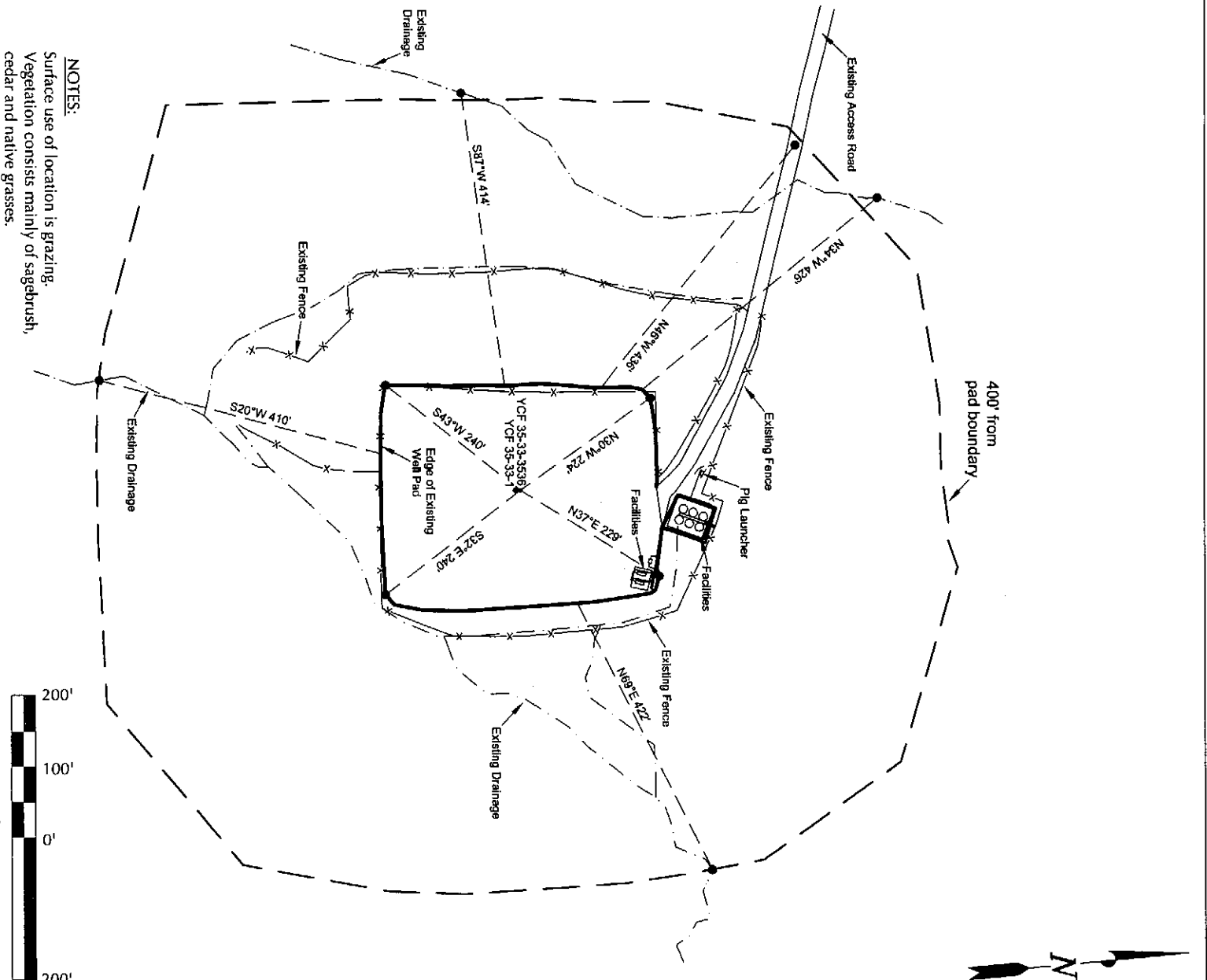
SCALE: 1" = 1000'

Date Last Revised: 10-27-09

SHEET NO:

2a

OF 9



NOTES:
 Surface use of location is grazing.
 Vegetation consists mainly of sagebrush,
 cedar and native grasses.



SCALE

BOPCO, L.P.

WELL PAD - YCF 35-33-1

ADDENDUM TO LEGAL PLAT

YCF 35-33-3536

1443' FSL, 1986' FEL (Surface)

NW ¼ SE ¼ OF SECTION 35, T1N, R98W,

6th P.M., RIO BLANCO COUNTY, COLORADO.

TIMBERLINE

(435) 789-1365

ENGINEERING & LAND SURVEYING, INC.

209 NORTH 300 WEST - VERNAL, UTAH 84078

DATE SURVEYED:

10-07-09

SURVEYED BY: B.J.S.

10-07-09

DATE DRAWN:

10-07-09

DRAWN BY: M.W.W.

11-13-09

SCALE: 1" = 200'

Date Last Revised:

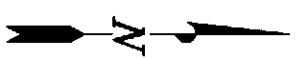
11-13-09

SHEET NO:

2b

OF 9

BASIS OF BEARINGS IS THE EAST LINE OF THE SE 1/4 OF SECTION 35, T1N, R98W, 6th P.M. WHICH IS TAKEN FROM GLOBAL POSITIONING SATELLITE OBSERVATIONS TO BEAR S00°01'09"E.



SURFACE POSITION FOOTAGES:

YCF 35-33-3536
1443' FSL & 1986' FEL

YCF 35-33-1 EXISTING WELL
1436' FSL & 1987' FEL

BOTTOM HOLE FOOTAGES

YCF 35-33-3536
1208' FSL & 1949' FWL

N05°08'52"E

YCF 35-33-3536
EXISTING WELL: YCF 35-33-1

S79°34'27"W - 1364.22'
(To Bottom Hole)

LATITUDE & LONGITUDE
Surface Position - (NAD 83)

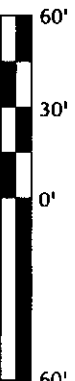
WELL	N. LATITUDE	W. LONGITUDE
YCF 35-33-3536	40°00'34.58" 40.00961°	108°21'23.44" 108.35651°
YCF 35-33-1 Existing Well Head	40°00'34.50" 40.00958°	108°21'23.45" 108.35651°

LATITUDE & LONGITUDE
Bottom Hole - (NAD 83)

WELL	N. LATITUDE	W. LONGITUDE
YCF 35-33-3536	40°00'32.15" 40.00893°	108°21'40.68" 108.36130°

RELATIVE COORDINATES
From Surface Position to Bottom Hole

WELL	NORTH	EAST
YCF 35-33-3536	-247'	-1,342'



SCALE

BOPCO, L.P.

WELL PAD - YCF 35-33-1

WELL PAD INTERFERENCE PLAT

WELL - YCF 35-33-3536
LOCATED IN SECTION 35, T1N, R98W,
6th P.M., RIO BLANCO COUNTY, COLORADO.

TIMBERLINE

ENGINEERING & LAND SURVEYING, INC.
209 NORTH 300 WEST - VERNAL, UTAH 84078

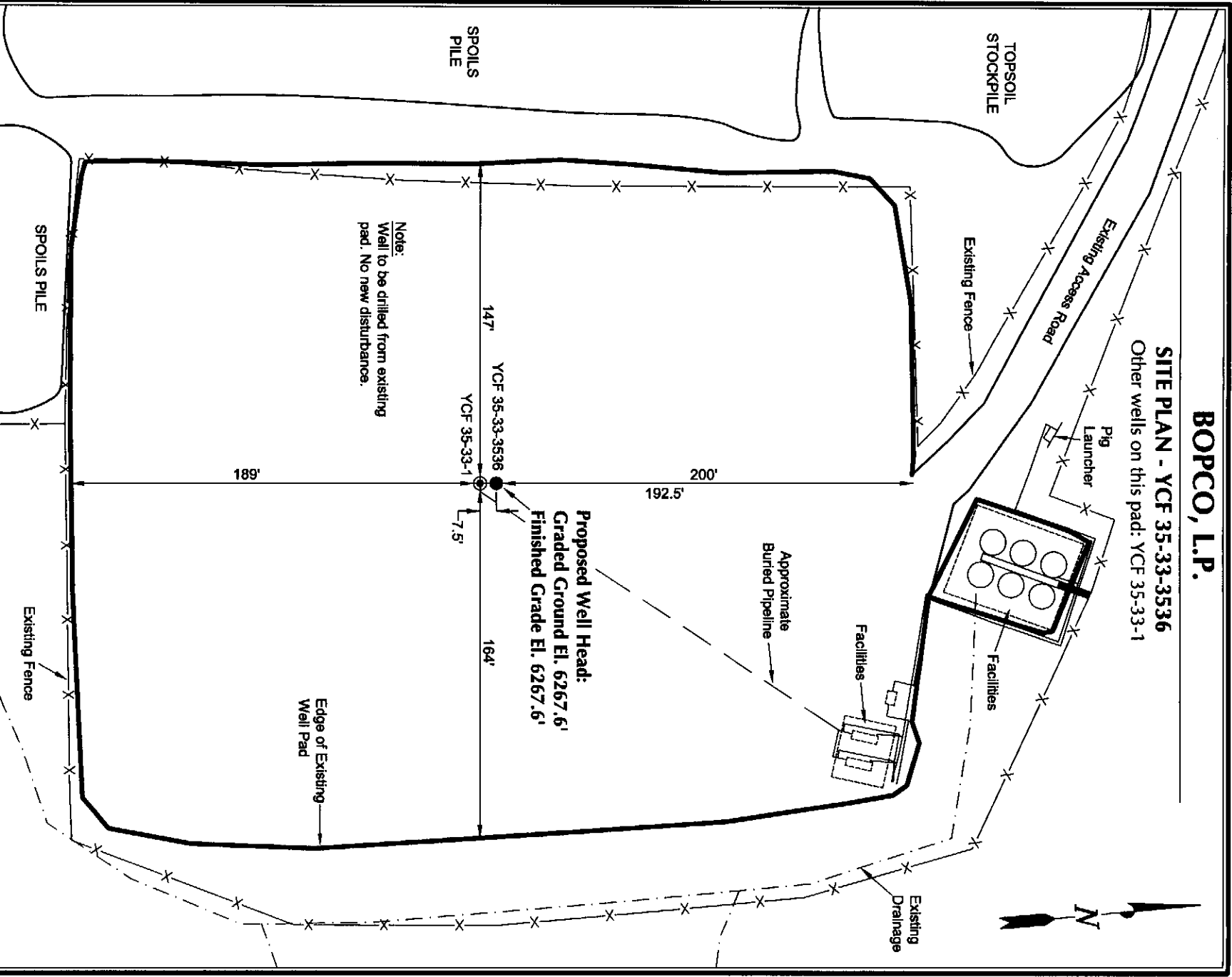
(435) 789-1365

DATE SURVEYED: 10-07-09	SURVEYED BY: B.J.S.	SHEET NO:
DATE DRAWN: 10-07-09	DRAWN BY: M.W.W.	3
SCALE: 1" = 60'		OF 9

BOPCO, L.P.

SITE PLAN - YCF 35-33-3536

Other wells on this pad: YCF 35-33-1

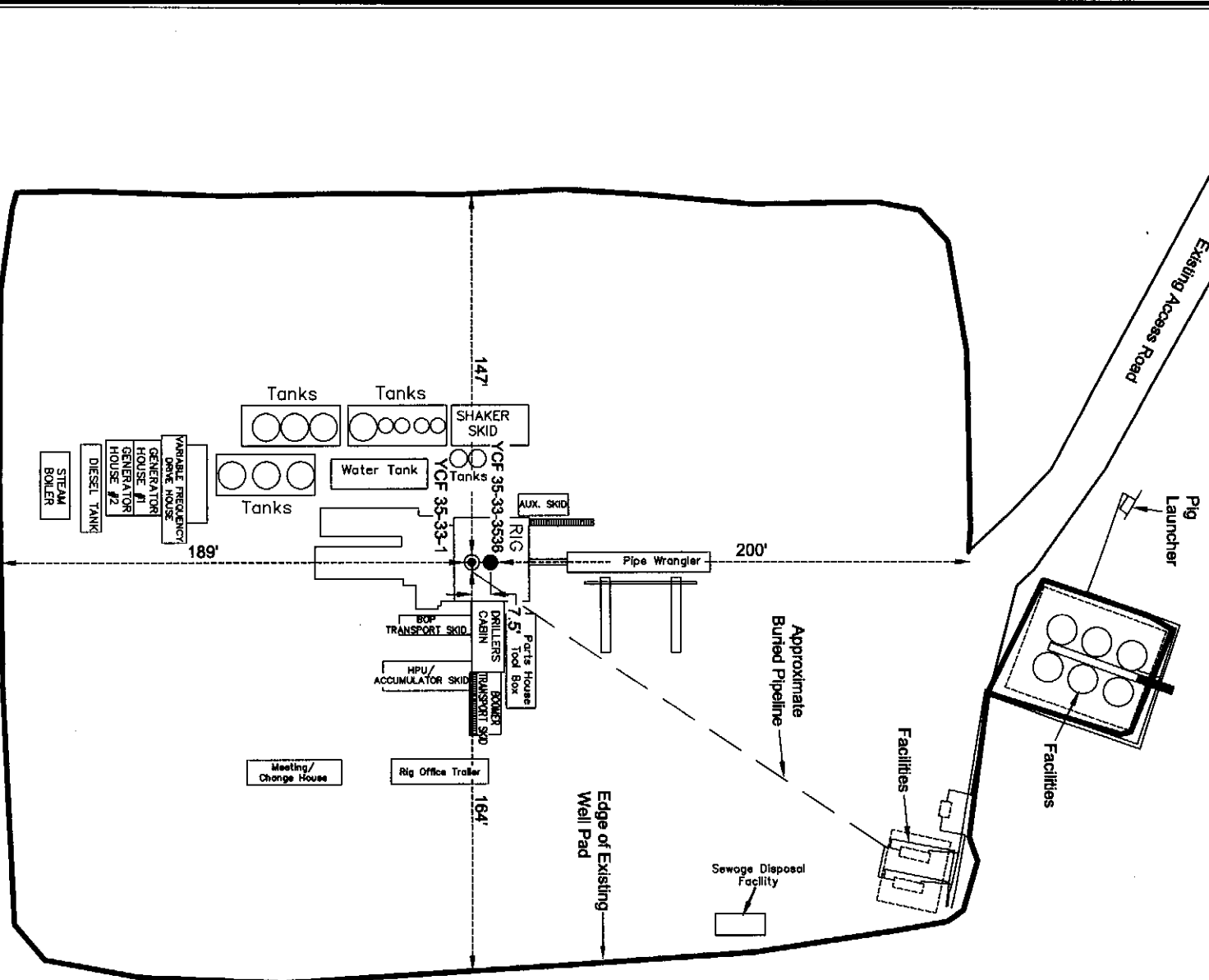


Section 35, T1N, R98W, 6th P.M.		Qtr/Qtr Location: NW SE (Surface)	
Date Surveyed: 10-07-09	Date Drawn: 10-07-09	Date Last Revision: 10-27-09	
Surveyed By: B.J.S.	Drawn By: M.W.W.	Scale: 1" = 60'	
TIMBERLINE		(435) 789-1365	
ENGINEERING & LAND SURVEYING, INC.		209 NORTH 300 WEST - VERNAL, UTAH 84078	
SHEET 4		OF 9	

BOPCO, L.P.

TYPICAL RIG LAYOUT - YCF 35-33-3536

Other wells on this pad: YCF 35-33-1



Section 35, T1N, R98W, 6th P.M.

Qtr/Qtr Location: NW SE (Surface)

Date Surveyed:
10-07-09

Date Drawn:
10-07-09

Date Last Revision:
10-27-09

Surveyed By: B.J.S.

Drawn By: M.W.W.

Scale: 1" = 60'

(435) 769-1365

TIMBERLINE
ENGINEERING & LAND SURVEYING, INC.
209 NORTH 300 WEST - VERNAL, UTAH 84078

SHEET
5
OF 9