

Bass

Sec 35 T1N R98W

YCF 35-33-1 Pad

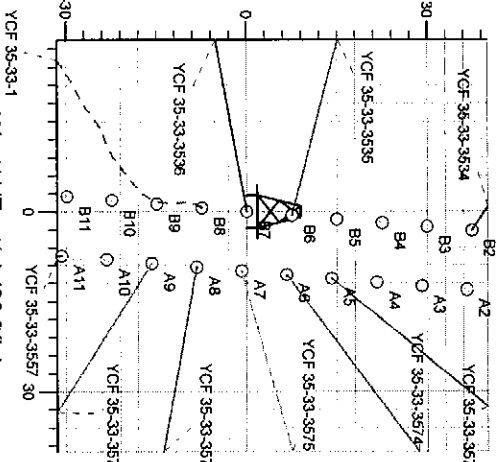
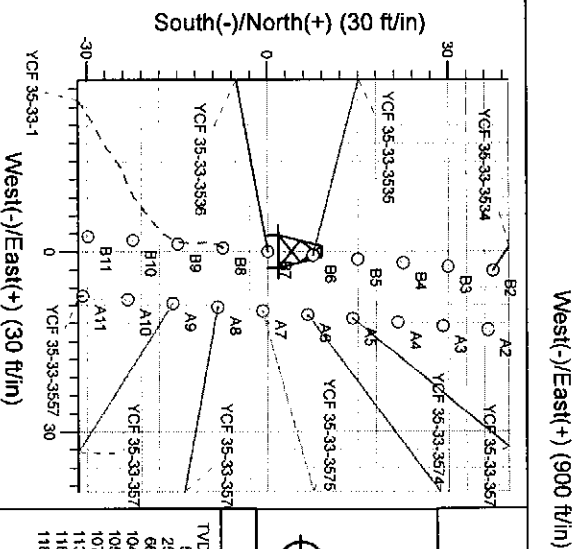
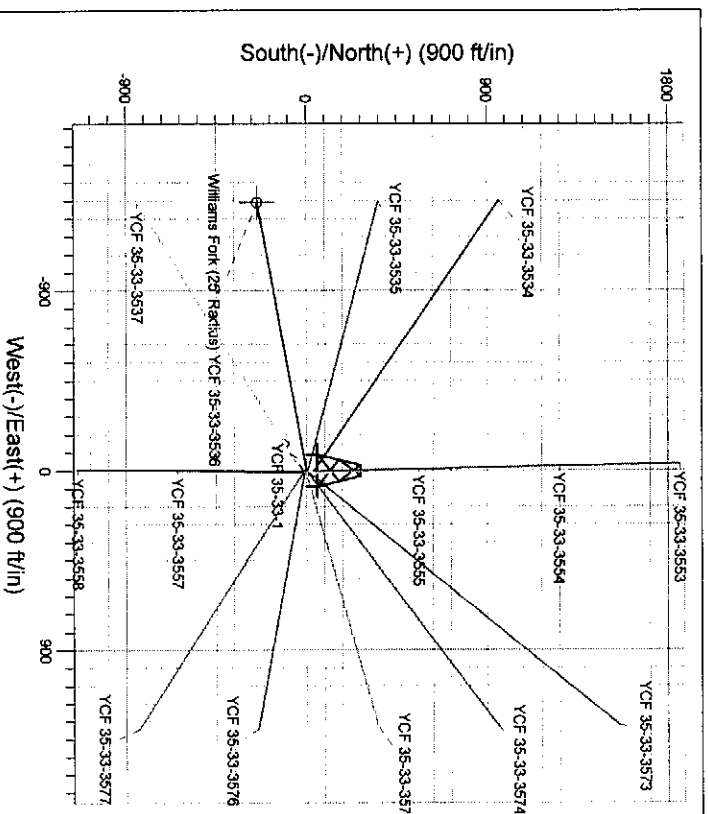
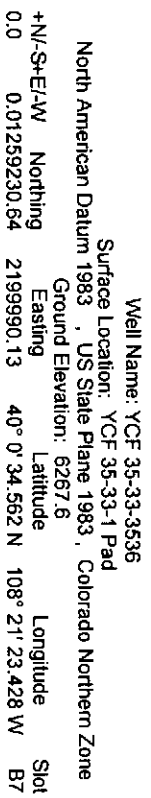
YCF 35-33-3536 - Slot B7

Wellbore #1

Plan: Plan #1 22Sep09 kjs

Standard Planning Report - Geographic

27 October, 2009



Sec	MD	Inc	Azi	TYD	+N/S	+E/W	Diag	Trace	V/sec	Target
1	0.0	0.00	0.00	0.0	0.0	0.0	0.00	0.00	0.0	0.0
2	120.0	0.00	0.00	120.0	0.0	0.0	0.00	0.00	0.0	0.0
3	651.3	13.28	255.66	646.6	-11.0	-60.3	2.30	255.66	8.13	0.0
4	5876.9	13.28	255.66	5732.4	-226.0	-1241.5	0.00	0.00	1251.9	0.0
5	6762.5	0.00	0.00	6610.6	-244.3	-1342.1	1.50	180.00	1354.1	0.0
6	12043.5	0.00	0.00	11819.0	-244.3	-1342.1	0.00	0.00	1354.1	0.0

TVd	MD	Annotation
120.0	120.0	Start Build 2.50
646.6	651.3	Hold 13.28 Inclination
5732.4	5676.9	Start Drop -1.50
6610.0	6762.5	Williams Fork
11891.0	12043.5	TD at 12043.5

New Tech

Planning Report - Geographic

Database: EIM 2003.16 Single User Db
 Company: Bass
 Project: Sec 35 T1N R98W
 Site: YCF 35-33-1 Pad
 Well: YCF 35-33-3536
 Wellbore: Wellbore #1
 Design: Plan #1 22Sep09 Kjs

Local Co-ordinate Reference:
 TVD Reference:
 MD Reference:
 North Reference:
 Survey Calculation Method:
 Well YCF 35-33-3536 - Slot B7
 WELL @ 6287.6ft (Original Well Elev)
 WELL @ 6287.6ft (Original Well Elev)
 True
 Minimum Curvature

Project: Sec 35 T1N R98W, Rio Blanco County, CO
 Map System: US State Plane 1983
 Geo Datum: North American Datum 1983
 Map Zone: Colorado Northern Zone

System Datum:

Mean Sea Level

Site: YCF 35-33-1 Pad

Site Position: Northing: 1,259,223.19ft Latitude: 40° 0' 34.488 N
 From: Lat/Long Easting: 2,199,989.26ft Longitude: 108° 21' 23.436 W
 Position Uncertainty: 0.0 ft Slot Radius: " Grid Convergence: -1.85°

Well: YCF 35-33-3536 - Slot B7

Well Position: +N/S 0.0 ft Northing: 1,259,230.64 ft Latitude: 40° 0' 34.562 N
 +E/W 0.0 ft Easting: 2,199,990.13 ft Longitude: 108° 21' 23.428 W
 Position Uncertainty: 0.0 ft Wellhead Elevation: ft Ground Level: 6,267.6 ft

Wellbore: Wellbore #1

Magnetics Model Name Sample Date Direction Dip Angle Field Strength
 IGRF200510 9/22/2009 10.79 66.15 52.732

Design: Plan #1 22Sep09 Kjs

Audit Notes: Version: Phase: PLAN Tie On Depth: 0.0

Vertical Section: Depth From (TVD) +N/S +E/W Direction
 (ft) (ft) (ft) (°)
 0.0 0.0 0.0 259.68

Plan Sections									
Measured	Inclination	Azimuth	Vertical	+N/S	+E/W	Dogleg	Build	Turn	TFO
Depth	(°)	(°)	Depth	(ft)	(ft)	Rate	Rate	Rate	(°)
(ft)			(ft)			(°/100ft)	(°/100ft)	(°/100ft)	Target
0.0	0.00	0.00	0.0	0.0	0.0	0.00	0.00	0.00	0.00
120.0	0.00	0.00	120.0	0.0	0.0	0.00	0.00	0.00	0.00
651.3	13.28	259.68	646.6	-11.0	-60.3	2.50	2.50	0.00	259.68
5,876.9	13.28	259.68	5,732.4	-226.0	-1,241.5	0.00	0.00	0.00	0.00
6,762.5	0.00	0.00	6,610.0	-244.3	-1,342.1	1.50	-1.50	0.00	180.00 Williams Fork (25 Rai
12,043.5	0.00	0.00	11,891.0	-244.3	-1,342.1	0.00	0.00	0.00	0.00

New Tech

Planning Report - Geographic

Database: EDM 2003.16 Single User Db
 Company: Bass
 Project: Sec 35 T1N R98W
 Site: YCF 35-33-1 Pad
 Well: YCF 35-33-3536
 Wellbore: Wellbore #1
 Design: Plan #1 22Sep09 kjs

Local Co-ordinate Reference:
 TWD Reference: Well YCF 35-33-3536 - Slot B7
 MD Reference: WELL @ 6287.6ft (Original Well Elev)
 North Reference: WELL @ 6287.6ft (Original Well Elev)
 Survey Calculation Method: True
 Minimum Curvature

Planned Survey									
Measured Depth (ft)	Inclination (°)	Azimuth (°)	Vertical Depth (ft)	+N-S (ft)	+E/W (ft)	Map Northing (ft)	Map Easting (ft)	Latitude	Longitude
0.0	0.00	0.00	0.0	0.0	0.0	1,259,230.64	2,199,990.13	40° 0' 34.562 N	108° 21' 23.428 W
120.0	0.00	0.00	120.0	0.0	0.0	1,259,230.64	2,199,990.13	40° 0' 34.562 N	108° 21' 23.428 W
Start Build 2.50									
546.5	10.66	259.68	544.0	-7.1	-38.9	1,259,224.81	2,199,951.00	40° 0' 34.492 N	108° 21' 23.928 W
Green River									
651.3	13.28	259.68	646.6	-11.0	-60.3	1,259,221.61	2,199,929.49	40° 0' 34.453 N	108° 21' 24.203 W
Hold 13.28 Inclination									
2,643.0	13.28	259.68	2,585.0	-82.9	-510.5	1,259,154.20	2,199,476.87	40° 0' 33.643 N	108° 21' 29.989 W
Wasatch									
3,377.7	13.28	259.68	3,300.0	-123.2	-676.6	1,259,129.34	2,199,309.91	40° 0' 33.345 N	108° 21' 32.124 W
9 5/8"									
5,876.9	13.28	259.68	5,732.4	-226.0	-1,241.5	1,259,044.75	2,198,741.95	40° 0' 32.328 N	108° 21' 39.384 W
Start Drop -1.50									
6,762.5	0.00	0.00	6,610.0	-244.3	-1,342.1	1,259,029.70	2,198,640.88	40° 0' 32.147 N	108° 21' 40.676 W
Williams Fork - Williams Fork - Williams Fork (25' Radius) YCF 35-33-3536									
10,596.5	0.00	0.00	10,444.0	-244.3	-1,342.1	1,259,029.70	2,198,640.88	40° 0' 32.147 N	108° 21' 40.676 W
Rollins									
10,723.5	0.00	0.00	10,571.0	-244.3	-1,342.1	1,259,029.70	2,198,640.88	40° 0' 32.147 N	108° 21' 40.676 W
Cozette									
10,951.5	0.00	0.00	10,799.0	-244.3	-1,342.1	1,259,029.70	2,198,640.88	40° 0' 32.147 N	108° 21' 40.676 W
Concoran									
11,490.5	0.00	0.00	11,338.0	-244.3	-1,342.1	1,259,029.70	2,198,640.88	40° 0' 32.147 N	108° 21' 40.676 W
Upper Sego									
11,843.5	0.00	0.00	11,691.0	-244.3	-1,342.1	1,259,029.70	2,198,640.88	40° 0' 32.147 N	108° 21' 40.676 W
Lower Sego									
12,043.5	0.00	0.00	11,891.0	-244.3	-1,342.1	1,259,029.70	2,198,640.88	40° 0' 32.147 N	108° 21' 40.676 W
TD at 12043.5 - Ideal TD									

Targets									
Target Name	Dip Angle (°)	Dip Dir. (°)	TVD (ft)	+N-S (ft)	+E/W (ft)	Northing (ft)	Easting (ft)	Latitude	Longitude
- Williams target									
- Shape	(°)	(°)	(ft)	(ft)	(ft)	(ft)	(ft)		
Williams Fork (25' Radius)	0.00	0.00	6,610.0	-244.3	-1,342.1	1,259,029.70	2,198,640.88	40° 0' 32.147 N	108° 21' 40.676 W
- plan hits target									
- Circle (radius 25.0)									

Casing Points						
Measured		Vertical		Name	Casing Diameter (")	Hole Diameter (")
Depth (ft)		Depth (ft)				
3,377.7		3,300.0	9 5/8"		9-5/8	14-3/4

New Tech

Planning Report - Geographic

Database: EDM 2003.16 Single User Db
 Company: Bass
 Project: Sec 35 T1N R98W
 Site: YCF 35-33-1 Pad
 Well: YCF 35-33-3536
 Wellbore: Wellbore #1
 Design: Plan #1 22Sep09 Kjs

Local Co-ordinate Reference:
 TVD Reference:
 MD Reference:
 North Reference:
 Survey Calculation Method:

Well YCF 35-33-3536 - Slot B7
 WELL @ 6287.6ft (Original Well Elev)
 WELL @ 6287.6ft (Original Well Elev)
 True
 Minimum Curvature

Formations

Measured Depth (ft)	Vertical Depth (ft)	Name	Lithology	Dip (°)	Dip Direction (°)
10,951.5	10,799.0	Corcoran			
2,643.0	2,585.0	Wasatch			
10,723.5	10,571.0	Cozzette			
546.5	544.0	Green River			
10,596.5	10,444.0	Rollins			
6,762.5	6,610.0	Williams Fork			
11,490.5	11,338.0	Upper Sego			
12,043.5	11,891.0	Ideal TD			
11,843.5	11,691.0	Lower Sego			

Plan Annotations

Measured Depth (ft)	Vertical Depth (ft)	+N/-S (ft)	+E/-W (ft)	Comment
120.0	120.0	0.0	0.0	Start Build 2.50
651.3	646.6	-11.0	-60.3	Hold 13.28 Inclination
5,876.9	5,732.4	-226.0	-1,241.5	Start Drop -1.50
6,762.5	6,610.0	-244.3	-1,342.1	Williams Fork
12,043.5	11,891.0	-244.3	-1,342.1	TD at 12043.5