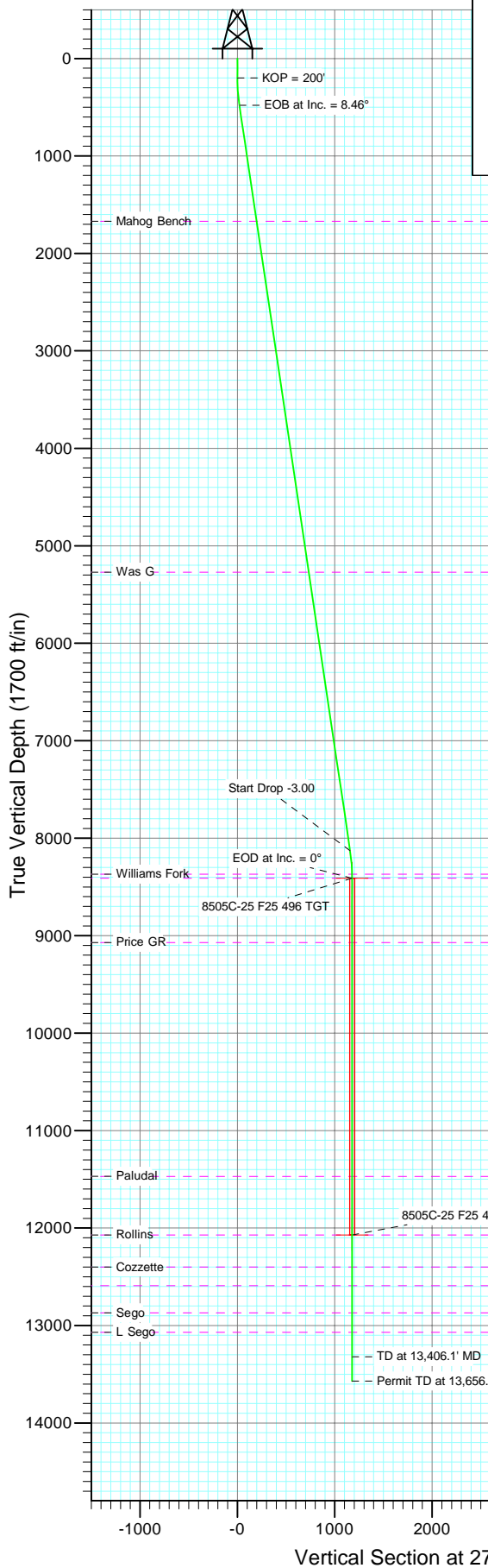
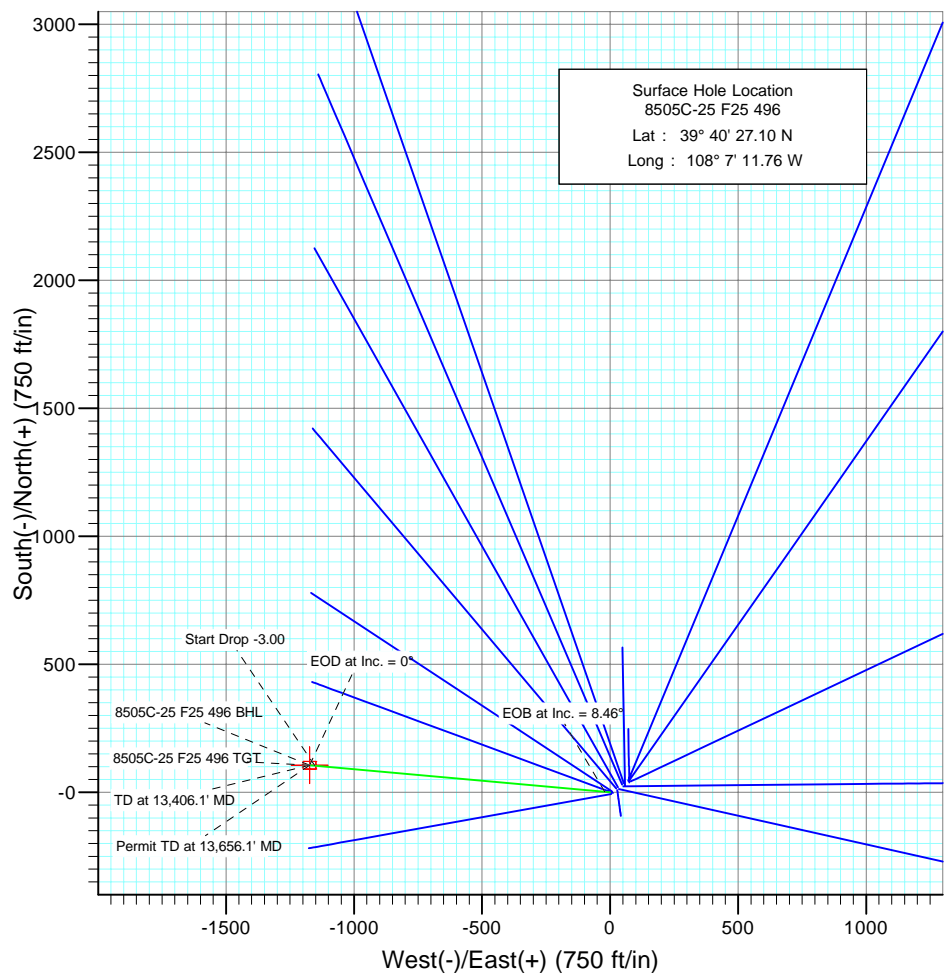




Project: Story Gulch
Site: F25 496
Well: 8505C-25 F25 496
Wellbore: DD
Design: Plan #1



SECTION DETAILS										Target
Sec	MD	Inc	Azi	TVD	+N/-S	+E/-W	DLeg	TFace	VSec	
1	0.0	0.00	0.00	0.0	0.0	0.0	0.00	0.00	0.0	
2	200.0	0.00	0.00	200.0	0.0	0.0	0.00	0.00	0.0	
3	481.9	8.46	275.16	480.9	1.9	-20.7	3.00	275.16	20.8	
4	8214.2	8.46	275.16	8129.1	104.2	-1153.3	0.00	0.00	1158.0	
5	8496.1	0.00	0.00	8410.0	106.0	-1174.0	3.00	180.00	1178.8	8505C-25 F25 496 TGT
6	12156.1	0.00	0.00	12070.0	106.0	-1174.0	0.00	0.00	1178.8	8505C-25 F25 496 BHL
7	13406.1	0.00	0.00	13320.0	106.0	-1174.0	0.00	0.00	1178.8	
8	13656.1	0.00	0.00	13570.0	106.0	-1174.0	0.00	0.00	1178.8	



Azimuths to True North
Magnetic North: 10.64°

Magnetic Field
Strength: 52519.3snT
Dip Angle: 65.92°
Date: 9/1/2009
Model: IGRF200510

FORMATION TOP DETAILS

TVDPath	MDPath	Formation
1670.0	1684.1	Mahog Bench
5270.0	5323.7	Was G
8370.0	8456.1	Williams Fork
8410.0	8496.1	Top of Gas
9070.0	9156.1	Price GR
11470.0	11556.1	Paludal
12070.0	12156.1	Rollins
12400.0	12486.1	Cozzette
12590.0	12676.1	Corcoran
12870.0	12956.1	Sego
13070.0	13156.1	L Sego

DESIGN DETAILS: Plan #1

Job #95xxx: KR

KBE @ 8320.0ft (Original Well Elev)

Target	Azimuth	Origin	N/S	E/W	From TVD
8505C-25 F25 496 BHL	275.16	Slot	0.0	0.0	0.0

Planning Report

Database:	US EDM 2003.21 Multi User Db	Local Co-ordinate Reference:	Well 8505C-25 F25 496
Company:	EnCana Oil & Gas (USA) Inc	TVD Reference:	KBE @ 8320.0ft (Original Well Elev)
Project:	Story Gulch	MD Reference:	KBE @ 8320.0ft (Original Well Elev)
Site:	F25 496	North Reference:	True
Well:	8505C-25 F25 496	Survey Calculation Method:	Minimum Curvature
Wellbore:	DD		
Design:	Plan #1		

Project	Story Gulch		
Map System:	US State Plane 1983	System Datum:	Mean Sea Level
Geo Datum:	North American Datum 1983		
Map Zone:	Colorado Central Zone		

Site	F25 496			
Site Position:		Northing:	1,681,091.06 ft	Latitude: 39° 40' 27.10 N
From:	Lat/Long	Easting:	2,262,632.54 ft	Longitude: 108° 7' 11.76 W
Position Uncertainty:	0.0 ft	Slot Radius:	in	Grid Convergence: -1.65 °

Well	8505C-25 F25 496			
Well Position	+N/-S	0.0 ft	Northing:	1,681,091.05 ft
	+E/-W	0.0 ft	Easting:	2,262,632.54 ft
Position Uncertainty		0.0 ft	Wellhead Elevation:	ft
			Ground Level:	8,298.0 ft

Wellbore	DD				
Magnetics	Model Name	Sample Date	Declination (°)	Dip Angle (°)	Field Strength (nT)
	IGRF200510	9/1/2009	10.64	65.92	52,519

Design	Plan #1			
Audit Notes:				
Version:	Phase:	PLAN	Tie On Depth:	0.0
Vertical Section:	Depth From (TVD) (ft)	+N/-S (ft)	+E/-W (ft)	Direction (°)
	0.0	0.0	0.0	275.16

Plan Sections										
Measured Depth (ft)	Inclination (°)	Azimuth (°)	Vertical Depth (ft)	+N/-S (ft)	+E/-W (ft)	Dogleg Rate (°/100ft)	Build Rate (°/100ft)	Turn Rate (°/100ft)	TFO (°)	Target
0.0	0.00	0.00	0.0	0.0	0.0	0.00	0.00	0.00	0.00	
200.0	0.00	0.00	200.0	0.0	0.0	0.00	0.00	0.00	0.00	
481.9	8.46	275.16	480.9	1.9	-20.7	3.00	3.00	0.00	275.16	
8,214.2	8.46	275.16	8,129.1	104.2	-1,153.3	0.00	0.00	0.00	0.00	
8,496.1	0.00	0.00	8,410.0	106.0	-1,174.0	3.00	-3.00	0.00	180.00	8505C-25 F25 496 TC
12,156.1	0.00	0.00	12,070.0	106.0	-1,174.0	0.00	0.00	0.00	0.00	8505C-25 F25 496 BT
13,406.1	0.00	0.00	13,320.0	106.0	-1,174.0	0.00	0.00	0.00	0.00	
13,656.1	0.00	0.00	13,570.0	106.0	-1,174.0	0.00	0.00	0.00	0.00	

Planning Report

Database:	US EDM 2003.21 Multi User Db	Local Co-ordinate Reference:	Well 8505C-25 F25 496
Company:	EnCana Oil & Gas (USA) Inc	TVD Reference:	KBE @ 8320.0ft (Original Well Elev)
Project:	Story Gulch	MD Reference:	KBE @ 8320.0ft (Original Well Elev)
Site:	F25 496	North Reference:	True
Well:	8505C-25 F25 496	Survey Calculation Method:	Minimum Curvature
Wellbore:	DD		
Design:	Plan #1		

Planned Survey									
Measured Depth (ft)	Inclination (°)	Azimuth (°)	Vertical Depth (ft)	+N/-S (ft)	+E/-W (ft)	Vertical Section (ft)	Dogleg Rate (°/100ft)	Build Rate (°/100ft)	Comments / Formations
0.0	0.00	0.00	0.0	0.0	0.0	0.0	0.00	0.00	
100.0	0.00	0.00	100.0	0.0	0.0	0.0	0.00	0.00	
200.0	0.00	0.00	200.0	0.0	0.0	0.0	0.00	0.00	KOP = 200'
300.0	3.00	275.16	300.0	0.2	-2.6	2.6	3.00	3.00	
400.0	6.00	275.16	399.6	0.9	-10.4	10.5	3.00	3.00	
481.9	8.46	275.16	480.9	1.9	-20.7	20.8	3.00	3.00	EOB at Inc. = 8.46°
500.0	8.46	275.16	498.8	2.1	-23.3	23.4	0.00	0.00	
600.0	8.46	275.16	597.7	3.4	-38.0	38.1	0.00	0.00	
700.0	8.46	275.16	696.6	4.8	-52.6	52.8	0.00	0.00	
800.0	8.46	275.16	795.5	6.1	-67.3	67.6	0.00	0.00	
900.0	8.46	275.16	894.4	7.4	-81.9	82.3	0.00	0.00	
1,000.0	8.46	275.16	993.3	8.7	-96.6	97.0	0.00	0.00	
1,100.0	8.46	275.16	1,092.3	10.0	-111.2	111.7	0.00	0.00	
1,200.0	8.46	275.16	1,191.2	11.4	-125.9	126.4	0.00	0.00	
1,300.0	8.46	275.16	1,290.1	12.7	-140.5	141.1	0.00	0.00	
1,400.0	8.46	275.16	1,389.0	14.0	-155.2	155.8	0.00	0.00	
1,500.0	8.46	275.16	1,487.9	15.3	-169.8	170.5	0.00	0.00	
1,600.0	8.46	275.16	1,586.8	16.7	-184.5	185.2	0.00	0.00	
1,684.1	8.46	275.16	1,670.0	17.8	-196.8	197.6	0.00	0.00	Mahog Bench
1,700.0	8.46	275.16	1,685.7	18.0	-199.1	199.9	0.00	0.00	
1,800.0	8.46	275.16	1,784.6	19.3	-213.8	214.6	0.00	0.00	
1,900.0	8.46	275.16	1,883.6	20.6	-228.4	229.3	0.00	0.00	
2,000.0	8.46	275.16	1,982.5	22.0	-243.0	244.0	0.00	0.00	
2,100.0	8.46	275.16	2,081.4	23.3	-257.7	258.7	0.00	0.00	
2,200.0	8.46	275.16	2,180.3	24.6	-272.3	273.5	0.00	0.00	
2,300.0	8.46	275.16	2,279.2	25.9	-287.0	288.2	0.00	0.00	
2,400.0	8.46	275.16	2,378.1	27.2	-301.6	302.9	0.00	0.00	
2,500.0	8.46	275.16	2,477.0	28.6	-316.3	317.6	0.00	0.00	
2,600.0	8.46	275.16	2,575.9	29.9	-330.9	332.3	0.00	0.00	
2,700.0	8.46	275.16	2,674.9	31.2	-345.6	347.0	0.00	0.00	
2,800.0	8.46	275.16	2,773.8	32.5	-360.2	361.7	0.00	0.00	
2,900.0	8.46	275.16	2,872.7	33.9	-374.9	376.4	0.00	0.00	
3,000.0	8.46	275.16	2,971.6	35.2	-389.5	391.1	0.00	0.00	
3,100.0	8.46	275.16	3,070.5	36.5	-404.2	405.8	0.00	0.00	
3,200.0	8.46	275.16	3,169.4	37.8	-418.8	420.5	0.00	0.00	
3,300.0	8.46	275.16	3,268.3	39.2	-433.5	435.2	0.00	0.00	
3,400.0	8.46	275.16	3,367.2	40.5	-448.1	449.9	0.00	0.00	
3,500.0	8.46	275.16	3,466.2	41.8	-462.8	464.6	0.00	0.00	
3,600.0	8.46	275.16	3,565.1	43.1	-477.4	479.4	0.00	0.00	
3,700.0	8.46	275.16	3,664.0	44.4	-492.1	494.1	0.00	0.00	
3,800.0	8.46	275.16	3,762.9	45.8	-506.7	508.8	0.00	0.00	
3,900.0	8.46	275.16	3,861.8	47.1	-521.4	523.5	0.00	0.00	
4,000.0	8.46	275.16	3,960.7	48.4	-536.0	538.2	0.00	0.00	
4,100.0	8.46	275.16	4,059.6	49.7	-550.7	552.9	0.00	0.00	
4,200.0	8.46	275.16	4,158.5	51.1	-565.3	567.6	0.00	0.00	
4,300.0	8.46	275.16	4,257.5	52.4	-579.9	582.3	0.00	0.00	
4,400.0	8.46	275.16	4,356.4	53.7	-594.6	597.0	0.00	0.00	
4,500.0	8.46	275.16	4,455.3	55.0	-609.2	611.7	0.00	0.00	
4,600.0	8.46	275.16	4,554.2	56.4	-623.9	626.4	0.00	0.00	
4,700.0	8.46	275.16	4,653.1	57.7	-638.5	641.1	0.00	0.00	
4,800.0	8.46	275.16	4,752.0	59.0	-653.2	655.8	0.00	0.00	
4,900.0	8.46	275.16	4,850.9	60.3	-667.8	670.6	0.00	0.00	

Planning Report

Database:	US EDM 2003.21 Multi User Db	Local Co-ordinate Reference:	Well 8505C-25 F25 496
Company:	EnCana Oil & Gas (USA) Inc	TVD Reference:	KBE @ 8320.0ft (Original Well Elev)
Project:	Story Gulch	MD Reference:	KBE @ 8320.0ft (Original Well Elev)
Site:	F25 496	North Reference:	True
Well:	8505C-25 F25 496	Survey Calculation Method:	Minimum Curvature
Wellbore:	DD		
Design:	Plan #1		

Planned Survey									
Measured Depth (ft)	Inclination (°)	Azimuth (°)	Vertical Depth (ft)	+N/-S (ft)	+E/-W (ft)	Vertical Section (ft)	Dogleg Rate (°/100ft)	Build Rate (°/100ft)	Comments / Formations
5,000.0	8.46	275.16	4,949.8	61.6	-682.5	685.3	0.00	0.00	
5,100.0	8.46	275.16	5,048.8	63.0	-697.1	700.0	0.00	0.00	
5,200.0	8.46	275.16	5,147.7	64.3	-711.8	714.7	0.00	0.00	
5,300.0	8.46	275.16	5,246.6	65.6	-726.4	729.4	0.00	0.00	
5,323.7	8.46	275.16	5,270.0	65.9	-729.9	732.9	0.00	0.00	Was G
5,400.0	8.46	275.16	5,345.5	66.9	-741.1	744.1	0.00	0.00	
5,500.0	8.46	275.16	5,444.4	68.3	-755.7	758.8	0.00	0.00	
5,600.0	8.46	275.16	5,543.3	69.6	-770.4	773.5	0.00	0.00	
5,700.0	8.46	275.16	5,642.2	70.9	-785.0	788.2	0.00	0.00	
5,800.0	8.46	275.16	5,741.1	72.2	-799.7	802.9	0.00	0.00	
5,900.0	8.46	275.16	5,840.1	73.6	-814.3	817.6	0.00	0.00	
6,000.0	8.46	275.16	5,939.0	74.9	-829.0	832.3	0.00	0.00	
6,100.0	8.46	275.16	6,037.9	76.2	-843.6	847.0	0.00	0.00	
6,200.0	8.46	275.16	6,136.8	77.5	-858.3	861.7	0.00	0.00	
6,300.0	8.46	275.16	6,235.7	78.8	-872.9	876.5	0.00	0.00	
6,400.0	8.46	275.16	6,334.6	80.2	-887.5	891.2	0.00	0.00	
6,500.0	8.46	275.16	6,433.5	81.5	-902.2	905.9	0.00	0.00	
6,600.0	8.46	275.16	6,532.4	82.8	-916.8	920.6	0.00	0.00	
6,700.0	8.46	275.16	6,631.4	84.1	-931.5	935.3	0.00	0.00	
6,800.0	8.46	275.16	6,730.3	85.5	-946.1	950.0	0.00	0.00	
6,900.0	8.46	275.16	6,829.2	86.8	-960.8	964.7	0.00	0.00	
7,000.0	8.46	275.16	6,928.1	88.1	-975.4	979.4	0.00	0.00	
7,100.0	8.46	275.16	7,027.0	89.4	-990.1	994.1	0.00	0.00	
7,200.0	8.46	275.16	7,125.9	90.8	-1,004.7	1,008.8	0.00	0.00	
7,300.0	8.46	275.16	7,224.8	92.1	-1,019.4	1,023.5	0.00	0.00	
7,400.0	8.46	275.16	7,323.7	93.4	-1,034.0	1,038.2	0.00	0.00	
7,500.0	8.46	275.16	7,422.7	94.7	-1,048.7	1,052.9	0.00	0.00	
7,600.0	8.46	275.16	7,521.6	96.0	-1,063.3	1,067.6	0.00	0.00	
7,700.0	8.46	275.16	7,620.5	97.4	-1,078.0	1,082.4	0.00	0.00	
7,800.0	8.46	275.16	7,719.4	98.7	-1,092.6	1,097.1	0.00	0.00	
7,900.0	8.46	275.16	7,818.3	100.0	-1,107.3	1,111.8	0.00	0.00	
8,000.0	8.46	275.16	7,917.2	101.3	-1,121.9	1,126.5	0.00	0.00	
8,100.0	8.46	275.16	8,016.1	102.7	-1,136.6	1,141.2	0.00	0.00	
8,200.0	8.46	275.16	8,115.0	104.0	-1,151.2	1,155.9	0.00	0.00	
8,214.2	8.46	275.16	8,129.1	104.2	-1,153.3	1,158.0	0.00	0.00	Start Drop -3.00
8,300.0	5.88	275.16	8,214.2	105.1	-1,164.0	1,168.7	3.00	-3.00	
8,400.0	2.88	275.16	8,313.9	105.8	-1,171.6	1,176.3	3.00	-3.00	
8,456.1	1.20	275.16	8,370.0	106.0	-1,173.6	1,178.3	3.00	-3.00	Williams Fork
8,496.1	0.00	0.00	8,410.0	106.0	-1,174.0	1,178.8	3.00	-3.00	EOD at Inc. = 0° - Top of Gas - 8505C-25 F25 4
8,500.0	0.00	0.00	8,413.9	106.0	-1,174.0	1,178.8	0.00	0.00	
8,600.0	0.00	0.00	8,513.9	106.0	-1,174.0	1,178.8	0.00	0.00	
8,700.0	0.00	0.00	8,613.9	106.0	-1,174.0	1,178.8	0.00	0.00	
8,800.0	0.00	0.00	8,713.9	106.0	-1,174.0	1,178.8	0.00	0.00	
8,900.0	0.00	0.00	8,813.9	106.0	-1,174.0	1,178.8	0.00	0.00	
9,000.0	0.00	0.00	8,913.9	106.0	-1,174.0	1,178.8	0.00	0.00	
9,100.0	0.00	0.00	9,013.9	106.0	-1,174.0	1,178.8	0.00	0.00	
9,156.1	0.00	0.00	9,070.0	106.0	-1,174.0	1,178.8	0.00	0.00	Price GR
9,200.0	0.00	0.00	9,113.9	106.0	-1,174.0	1,178.8	0.00	0.00	
9,300.0	0.00	0.00	9,213.9	106.0	-1,174.0	1,178.8	0.00	0.00	
9,400.0	0.00	0.00	9,313.9	106.0	-1,174.0	1,178.8	0.00	0.00	
9,500.0	0.00	0.00	9,413.9	106.0	-1,174.0	1,178.8	0.00	0.00	
9,600.0	0.00	0.00	9,513.9	106.0	-1,174.0	1,178.8	0.00	0.00	

Planning Report

Database:	US EDM 2003.21 Multi User Db	Local Co-ordinate Reference:	Well 8505C-25 F25 496
Company:	EnCana Oil & Gas (USA) Inc	TVD Reference:	KBE @ 8320.0ft (Original Well Elev)
Project:	Story Gulch	MD Reference:	KBE @ 8320.0ft (Original Well Elev)
Site:	F25 496	North Reference:	True
Well:	8505C-25 F25 496	Survey Calculation Method:	Minimum Curvature
Wellbore:	DD		
Design:	Plan #1		

Planned Survey									
Measured Depth (ft)	Inclination (°)	Azimuth (°)	Vertical Depth (ft)	+N/-S (ft)	+E/-W (ft)	Vertical Section (ft)	Dogleg Rate (°/100ft)	Build Rate (°/100ft)	Comments / Formations
9,700.0	0.00	0.00	9,613.9	106.0	-1,174.0	1,178.8	0.00	0.00	
9,800.0	0.00	0.00	9,713.9	106.0	-1,174.0	1,178.8	0.00	0.00	
9,900.0	0.00	0.00	9,813.9	106.0	-1,174.0	1,178.8	0.00	0.00	
10,000.0	0.00	0.00	9,913.9	106.0	-1,174.0	1,178.8	0.00	0.00	
10,100.0	0.00	0.00	10,013.9	106.0	-1,174.0	1,178.8	0.00	0.00	
10,200.0	0.00	0.00	10,113.9	106.0	-1,174.0	1,178.8	0.00	0.00	
10,300.0	0.00	0.00	10,213.9	106.0	-1,174.0	1,178.8	0.00	0.00	
10,400.0	0.00	0.00	10,313.9	106.0	-1,174.0	1,178.8	0.00	0.00	
10,500.0	0.00	0.00	10,413.9	106.0	-1,174.0	1,178.8	0.00	0.00	
10,600.0	0.00	0.00	10,513.9	106.0	-1,174.0	1,178.8	0.00	0.00	
10,700.0	0.00	0.00	10,613.9	106.0	-1,174.0	1,178.8	0.00	0.00	
10,800.0	0.00	0.00	10,713.9	106.0	-1,174.0	1,178.8	0.00	0.00	
10,900.0	0.00	0.00	10,813.9	106.0	-1,174.0	1,178.8	0.00	0.00	
11,000.0	0.00	0.00	10,913.9	106.0	-1,174.0	1,178.8	0.00	0.00	
11,100.0	0.00	0.00	11,013.9	106.0	-1,174.0	1,178.8	0.00	0.00	
11,200.0	0.00	0.00	11,113.9	106.0	-1,174.0	1,178.8	0.00	0.00	
11,300.0	0.00	0.00	11,213.9	106.0	-1,174.0	1,178.8	0.00	0.00	
11,400.0	0.00	0.00	11,313.9	106.0	-1,174.0	1,178.8	0.00	0.00	
11,500.0	0.00	0.00	11,413.9	106.0	-1,174.0	1,178.8	0.00	0.00	
11,556.1	0.00	0.00	11,470.0	106.0	-1,174.0	1,178.8	0.00	0.00	Paludal
11,600.0	0.00	0.00	11,513.9	106.0	-1,174.0	1,178.8	0.00	0.00	
11,700.0	0.00	0.00	11,613.9	106.0	-1,174.0	1,178.8	0.00	0.00	
11,800.0	0.00	0.00	11,713.9	106.0	-1,174.0	1,178.8	0.00	0.00	
11,900.0	0.00	0.00	11,813.9	106.0	-1,174.0	1,178.8	0.00	0.00	
12,000.0	0.00	0.00	11,913.9	106.0	-1,174.0	1,178.8	0.00	0.00	
12,100.0	0.00	0.00	12,013.9	106.0	-1,174.0	1,178.8	0.00	0.00	
12,156.1	0.00	0.00	12,070.0	106.0	-1,174.0	1,178.8	0.00	0.00	Rollins - 8505C-25 F25 496 BHL
12,200.0	0.00	0.00	12,113.9	106.0	-1,174.0	1,178.8	0.00	0.00	
12,300.0	0.00	0.00	12,213.9	106.0	-1,174.0	1,178.8	0.00	0.00	
12,400.0	0.00	0.00	12,313.9	106.0	-1,174.0	1,178.8	0.00	0.00	
12,486.1	0.00	0.00	12,400.0	106.0	-1,174.0	1,178.8	0.00	0.00	Cozzette
12,500.0	0.00	0.00	12,413.9	106.0	-1,174.0	1,178.8	0.00	0.00	
12,600.0	0.00	0.00	12,513.9	106.0	-1,174.0	1,178.8	0.00	0.00	
12,676.1	0.00	0.00	12,590.0	106.0	-1,174.0	1,178.8	0.00	0.00	Corcoran
12,700.0	0.00	0.00	12,613.9	106.0	-1,174.0	1,178.8	0.00	0.00	
12,800.0	0.00	0.00	12,713.9	106.0	-1,174.0	1,178.8	0.00	0.00	
12,900.0	0.00	0.00	12,813.9	106.0	-1,174.0	1,178.8	0.00	0.00	
12,956.1	0.00	0.00	12,870.0	106.0	-1,174.0	1,178.8	0.00	0.00	Sego
13,000.0	0.00	0.00	12,913.9	106.0	-1,174.0	1,178.8	0.00	0.00	
13,100.0	0.00	0.00	13,013.9	106.0	-1,174.0	1,178.8	0.00	0.00	
13,156.1	0.00	0.00	13,070.0	106.0	-1,174.0	1,178.8	0.00	0.00	L Sego
13,200.0	0.00	0.00	13,113.9	106.0	-1,174.0	1,178.8	0.00	0.00	
13,300.0	0.00	0.00	13,213.9	106.0	-1,174.0	1,178.8	0.00	0.00	
13,400.0	0.00	0.00	13,313.9	106.0	-1,174.0	1,178.8	0.00	0.00	
13,406.1	0.00	0.00	13,320.0	106.0	-1,174.0	1,178.8	0.00	0.00	TD at 13,406.1' MD
13,500.0	0.00	0.00	13,413.9	106.0	-1,174.0	1,178.8	0.00	0.00	
13,600.0	0.00	0.00	13,513.9	106.0	-1,174.0	1,178.8	0.00	0.00	
13,656.1	0.00	0.00	13,570.0	106.0	-1,174.0	1,178.8	0.00	0.00	Permit TD at 13,656.1' MD

Planning Report

Database:	US EDM 2003.21 Multi User Db	Local Co-ordinate Reference:	Well 8505C-25 F25 496
Company:	EnCana Oil & Gas (USA) Inc	TVD Reference:	KBE @ 8320.0ft (Original Well Elev)
Project:	Story Gulch	MD Reference:	KBE @ 8320.0ft (Original Well Elev)
Site:	F25 496	North Reference:	True
Well:	8505C-25 F25 496	Survey Calculation Method:	Minimum Curvature
Wellbore:	DD		
Design:	Plan #1		

Targets									
Target Name									
- hit/miss target	Dip Angle	Dip Dir.	TVD	+N/-S	+E/-W	Northing	Easting	Latitude	Longitude
- Shape	(°)	(°)	(ft)	(ft)	(ft)	(ft)	(ft)		
8505C-25 F25 496 TGT	0.00	0.00	8,410.0	106.0	-1,174.0	1,681,230.90	2,261,462.12	39° 40' 28.15 N	108° 7' 26.77 W
- plan hits target center									
- Point									
8505C-25 F25 496 BHL	0.00	0.00	12,070.0	106.0	-1,174.0	1,681,230.90	2,261,462.12	39° 40' 28.15 N	108° 7' 26.77 W
- plan hits target center									
- Rectangle (sides W30.0 H50.0 D0.0)									

Formations						
Measured Depth	Vertical Depth	Name	Lithology	Dip	Dip Direction	
(ft)	(ft)			(°)	(°)	
1,684.1	1,670.0	Mahog Bench		0.00		
5,323.7	5,270.0	Was G		0.00		
8,456.1	8,370.0	Williams Fork		0.00		
8,496.1	8,410.0	Top of Gas		0.00		
9,156.1	9,070.0	Price GR		0.00		
11,556.1	11,470.0	Paludal		0.00		
12,156.1	12,070.0	Rollins		0.00		
12,486.1	12,400.0	Cozzette		0.00		
12,676.1	12,590.0	Corcoran		0.00		
12,956.1	12,870.0	Sego		0.00		
13,156.1	13,070.0	L Sego		0.00		

Plan Annotations				
Measured Depth	Vertical Depth	Local Coordinates		Comment
(ft)	(ft)	+N/-S (ft)	+E/-W (ft)	
200.0	200.0	0.0	0.0	KOP = 200'
481.9	480.9	1.9	-20.7	EOB at Inc. = 8.46°
8,214.2	8,129.1	104.2	-1,153.3	Start Drop -3.00
8,496.1	8,410.0	106.0	-1,174.0	EOD at Inc. = 0°
13,406.1	13,320.0	106.0	-1,174.0	TD at 13,406.1' MD
13,656.1	13,570.0	106.0	-1,174.0	Permit TD at 13,656.1' MD