

2032704
LAYOUT DRAWING
12-15-2009

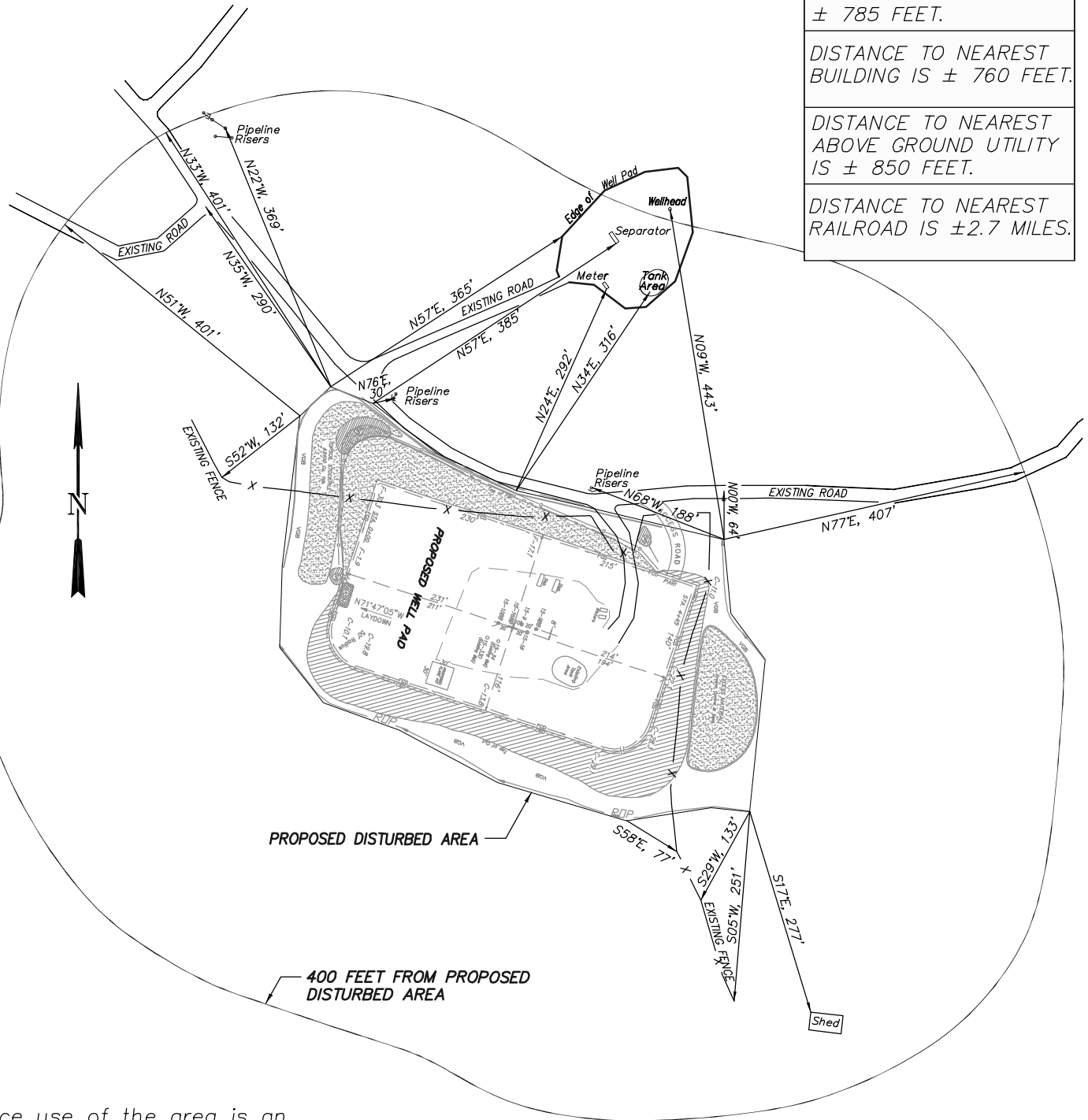
EnCana Oil & Gas (USA) Inc.
ADDENDUM TO LEGAL PLATS FOR
PI-15 Well Pad
SECTION 15, T 7 S, R 95 W, 6th P.M.

DISTANCE TO NEAREST
PUBLIC ROAD IS
± 785 FEET.

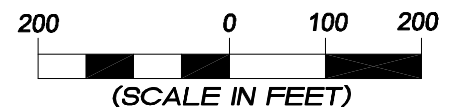
DISTANCE TO NEAREST
BUILDING IS ± 760 FEET.

DISTANCE TO NEAREST
ABOVE GROUND UTILITY
IS ± 850 FEET.

DISTANCE TO NEAREST
RAILROAD IS ± 2.7 MILES.



Surface use of the area is an existing well pad. Surrounding area of use is grazing. Vegetation consists mainly of sage brush, oak brush and native grasses.



906 Main Street
Evanston, Wyoming 82930
Phone No. (307) 789-4545

| Addendum | | Scale: 1" = 200' | SHEET 1f OF 10 |
|-------------|-----------|--------------------------------|----------------------|
| Project No. | 07-04-106 | Date Surveyed: 9/27/07 | |
| Date Drawn: | 12/06/07 | Latest Revision Date: 11/11/09 | |
| | | | |