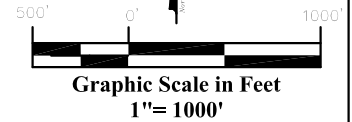
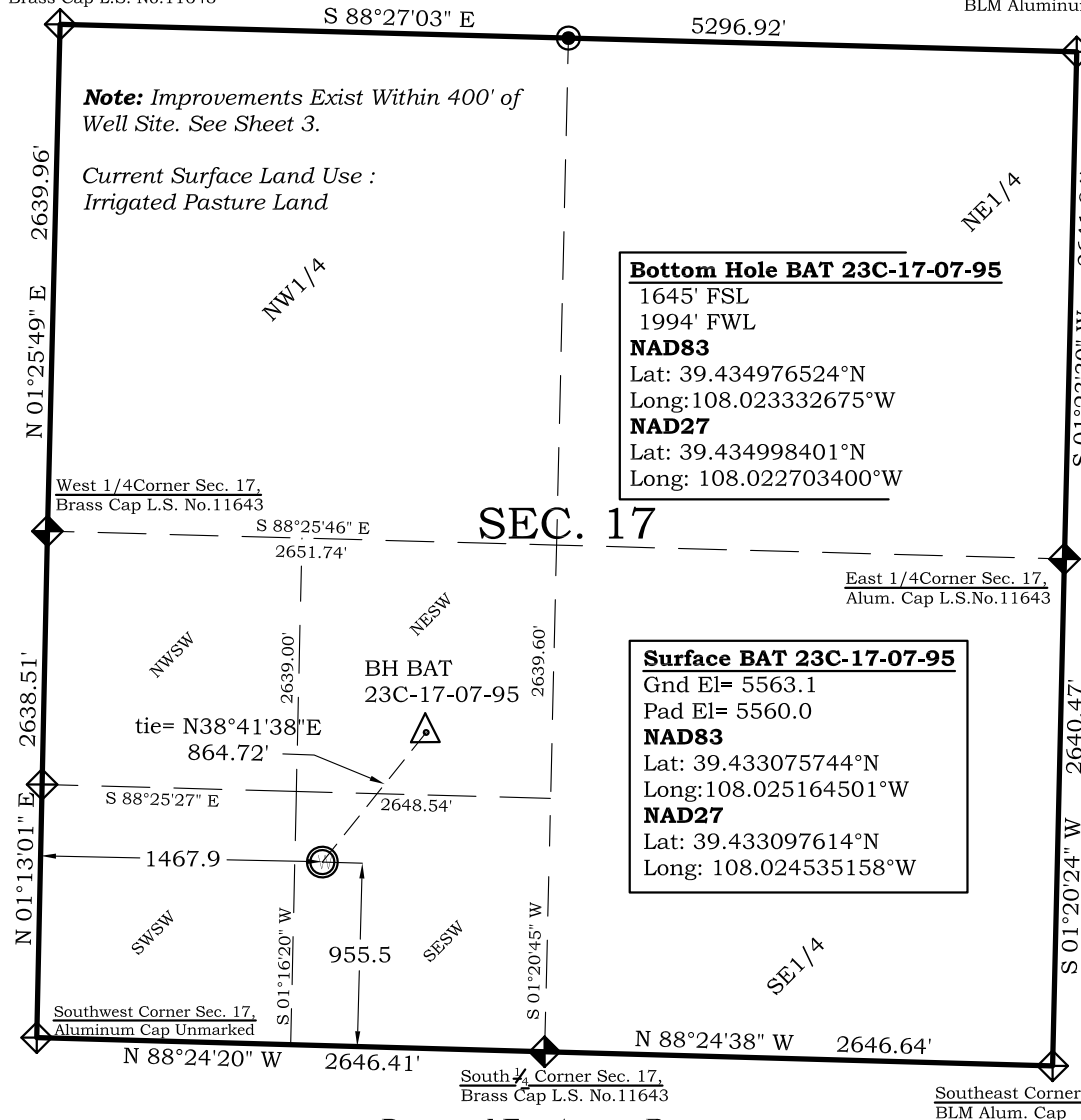


Well Location Plat BAT 23C-17-07-95

Section 17, Township 7 South, Range 95 West

Northwest Corner Sec. 17,
Brass Cap L.S. No.11643

Northeast Corner Sec. 17,
BLM Aluminum Cap



Legend

- Field Surveyed Section Corner
- Field Surveyed Quarter Corner
- Calculated Section Corner Location
- Field Surveyed $\frac{1}{16}$ Corner

BAT 23C-17-07-95

955' FSL
1468' FWL
WGS 84
LATITUDE
39.433075744°N
LONGITUDE
108.025164501°W
UTM 13 NORTH
NAD 1983
NORTHING
14334635.2
EASTING
786174.5

Prepared For Antero Resources

Proposed BAT 23C-17-07-95 Well Situate in The SE $\frac{1}{4}$ SW $\frac{1}{4}$
Section 17, Township 7 South, Range 95 West of the 6 th.

Principal Meridian, County of Garfield, State of Colorado

SURVEYOR'S CERTIFICATE

I, SCOTT E. AIBNER, A REGISTERED LAND SURVEYOR, LICENSED UNDER THE LAWS OF THE STATE OF COLORADO DO HEREBY CERTIFY THAT THE SURVEY SHOWN HEREON WAS PREPARED BY RIVER VALLEY SURVEY, INC., FOR ANTERO RESOURCES, BY ME OR UNDER MY DIRECT SUPERVISION AND THAT THIS PLAT IS A TRUE REPRESENTATION THEREOF.

BY: 
SCOTT E. AIBNER, COLORADO REG. NO. 31143

Notes:

- LATITUDE AND LONGITUDE COORDINATES ARE DIFFERENTIALLY CORRECTED AND BASED ON PUBLISHED NGS CONTROL STATION "KOESELL". SYSTEM: UTM ZONE: 13 NORTH DATUM: NAD 1983 (CONUS)
- ELEVATIONS ARE BASED ON NAVD OF 1929.
- ALL BOTTOM AND TOP HOLE LOCATIONS ARE MEASURED 90 DEGREES FROM SECTION LINE.
- USGS QUADRANGLE MAP "GRAND VALLEY".
- CURRENT SURFACE LAND USE: IRRIGATED PASTURE LAND
- PDOP AT THE TIME OF LOCATION OF SURFACE WELL = 1.8



River Valley Survey, Inc.
110 East 3rd. Street, Suite 213
Rifle, Colorado 81650
Ph: 970-379-7846

Project: WATSON RANCH PAD

Field Date: 06-19-09

Date: 11-12-09

Scale: 1"= 1000'

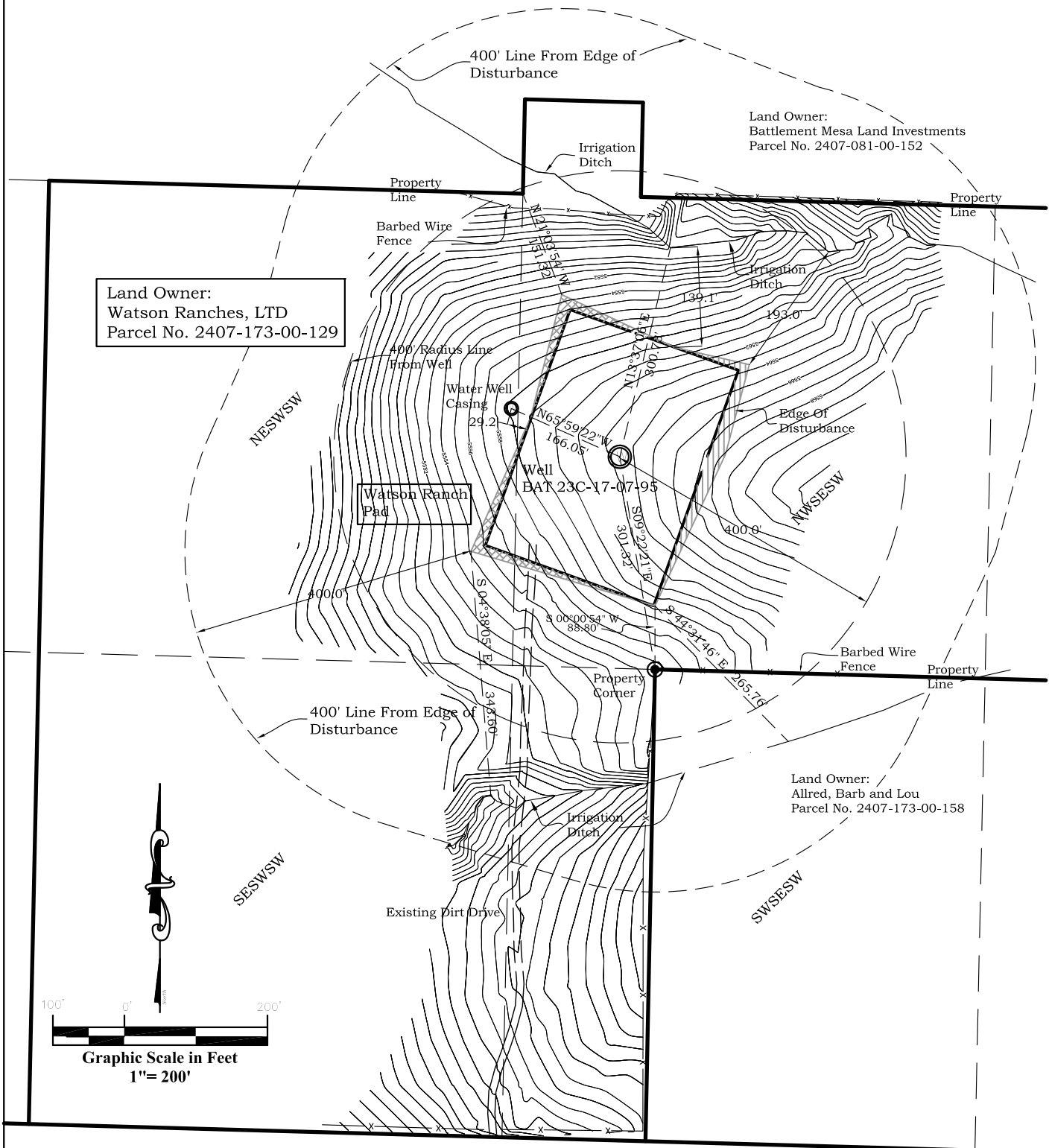
Sheet: 1 of 9

Well Location Plat
Prepared For Antero Resources

Situate In:
SE $\frac{1}{4}$ SW $\frac{1}{4}$ Section 17, T7S., R. 95 W. of
the 6th P.M., Garfield County, Colorado



Location Drawing BAT 23C-17-07-95 Section 17, Township 7 South, Range 95 West



River Valley Survey, Inc.
110 East 3rd. Street, Suite 213
Rifle, Colorado 81650
Ph: 970-379-7846

Project: WATSON RANCH PAD

Field Date: 06-19-09

Date: 11-17-09

Scale: 1" = 200'

Sheet: 3 of 9

**Well Location Plat
Prepared For Antero Resources**

Situate In:
SE $\frac{1}{4}$ SW $\frac{1}{4}$ Section 17, T7S., R. 95 W. of
the 6th P.M., Garfield County, Colorado

