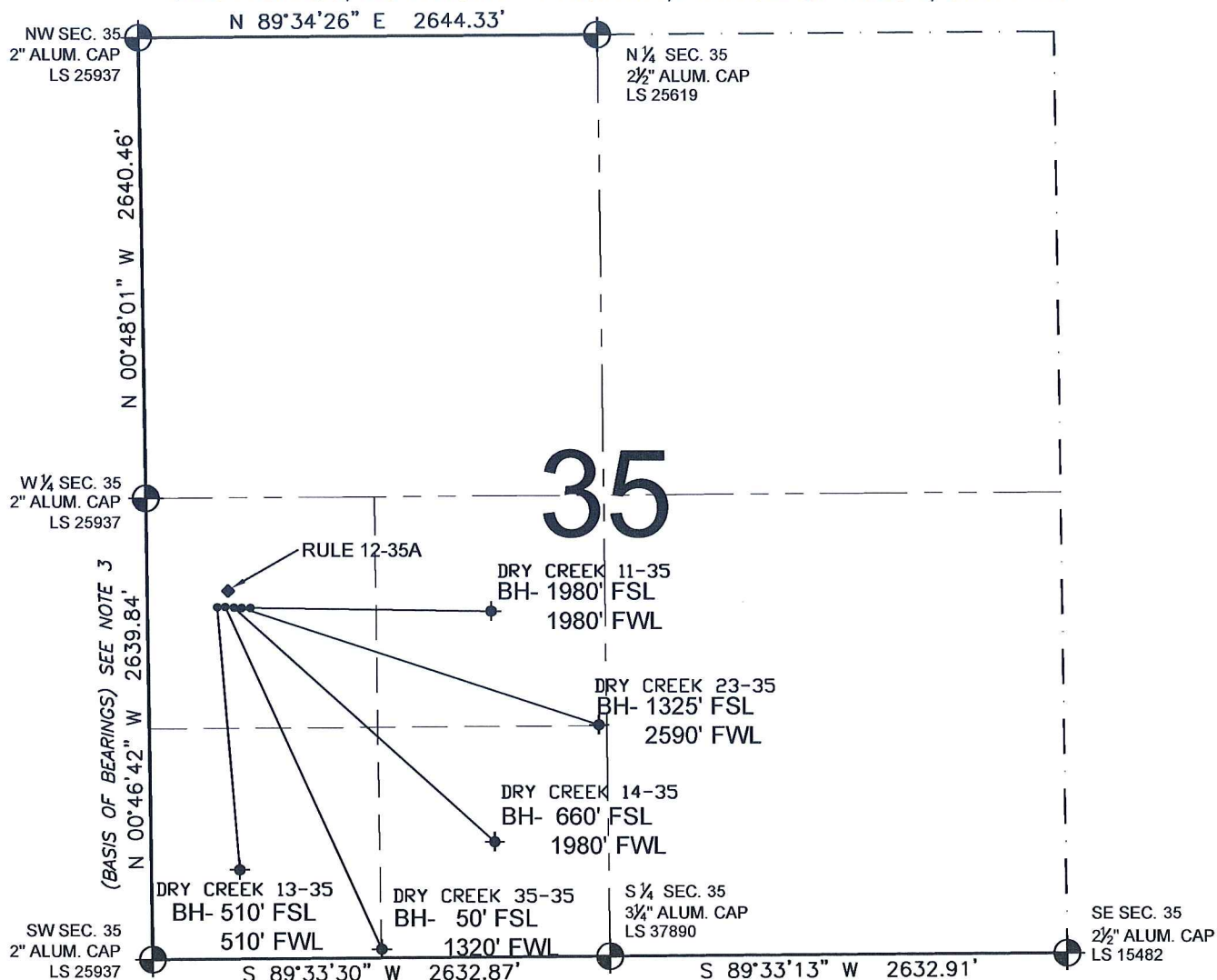


PAD DRAWING: DRY CREEK 5 PAD

SECTION 35, TOWNSHIP 1 NORTH, RANGE 67 WEST, 6TH P.M.



LEGEND

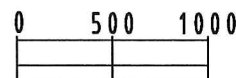
- ⊕ = EXISTING MONUMENT
- ⬢ = BOTTOM HOLE
- BH= BOTTOM HOLE
- = PROPOSED WELL
- ◆ = EXISTING WELL

NOTES:

- THIS SURVEY WAS DONE BY GPS METHODS AND CONFORMS TO THE MINIMUM STANDARDS SET BY THE C.O.G.C.C., RULE NO. 215 (PDOP VALUE IS LESS THAN 6.0, LATITUDE AND LONGITUDE ARE ACCURATE TO 5 DECIMAL PLACES, AND GPS OBSERVATIONS ARE DIFFERENTIAL AND DONE BY QUALIFIED PERSONNEL.)
- ELEVATIONS SHOWN AT THE WELL HEAD, AS WELL AS HORIZONTAL CONTROL, ARE BASED ON GPS-RTK VALUES DERIVED FROM DOING 2-HOUR STATIC GPS SESSIONS AND REDUCTIONS USING O.P.U.S. SOLUTIONS.
VERTICAL = NAVD88; HORIZONTAL = NAD83/92
- THE BEARINGS SHOWN HEREON ARE BASED ON GPS OBSERVATIONS BETWEEN THE MONUMENTS SHOWN HEREON AS FOUND ON THE FIELD DATE BELOW.
- DISTANCES SHOWN ARE AT GROUND LEVEL, AS MEASURED IN THE FIELD, WITH TIES TO WELLS MEASURED AT A PERPENDICULAR TO SECTION LINES.

NOTES:

- DRY CREEK 13-35 TO BE AT 2011' FSL, 468' FWL.
- BOTTOM HOLE AT 510' FSL & 510' FWL.
- DRY CREEK 35-35 TO BE AT 2011' FSL, 484' FWL.
- BOTTOM HOLE AT 50' FSL & 1320' FWL.
- DRY CREEK 14-35 TO BE AT 2011' FSL, 500' FWL.
- BOTTOM HOLE AT 660' FSL & 1980' FWL.
- DRY CREEK 23-35 TO BE AT 2011' FSL, 516' FWL.
- BOTTOM HOLE AT 1325' FSL & 2590' FWL.
- DRY CREEK 11-35 TO BE AT 2011' FSL, 532' FWL.
- BOTTOM HOLE AT 1980' FSL & 1980' FWL.
- RULE 12-35A IS AT 2061' FSL, 468' FWL.



SCALE: 1"=1000'

REVISIONS

INITIAL	DATE

PREPARED BY:

PFS

Petroleum Field Services, LLC
1801 W. 13th Ave.
Denver, CO 80204



KERR-MCGEE OIL & GAS ONSHORE LP

FIELD DATE:
09-09-09

DRAWING DATE:
09-12-09

BY:
CP

PAD NAME:

DRY CREEK 5 PAD

SURFACE LOCATION:

WELD COUNTY, COLORADO
NW 1/4 SW 1/4, SEC. 35, T1N, R67W