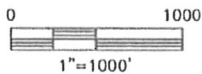
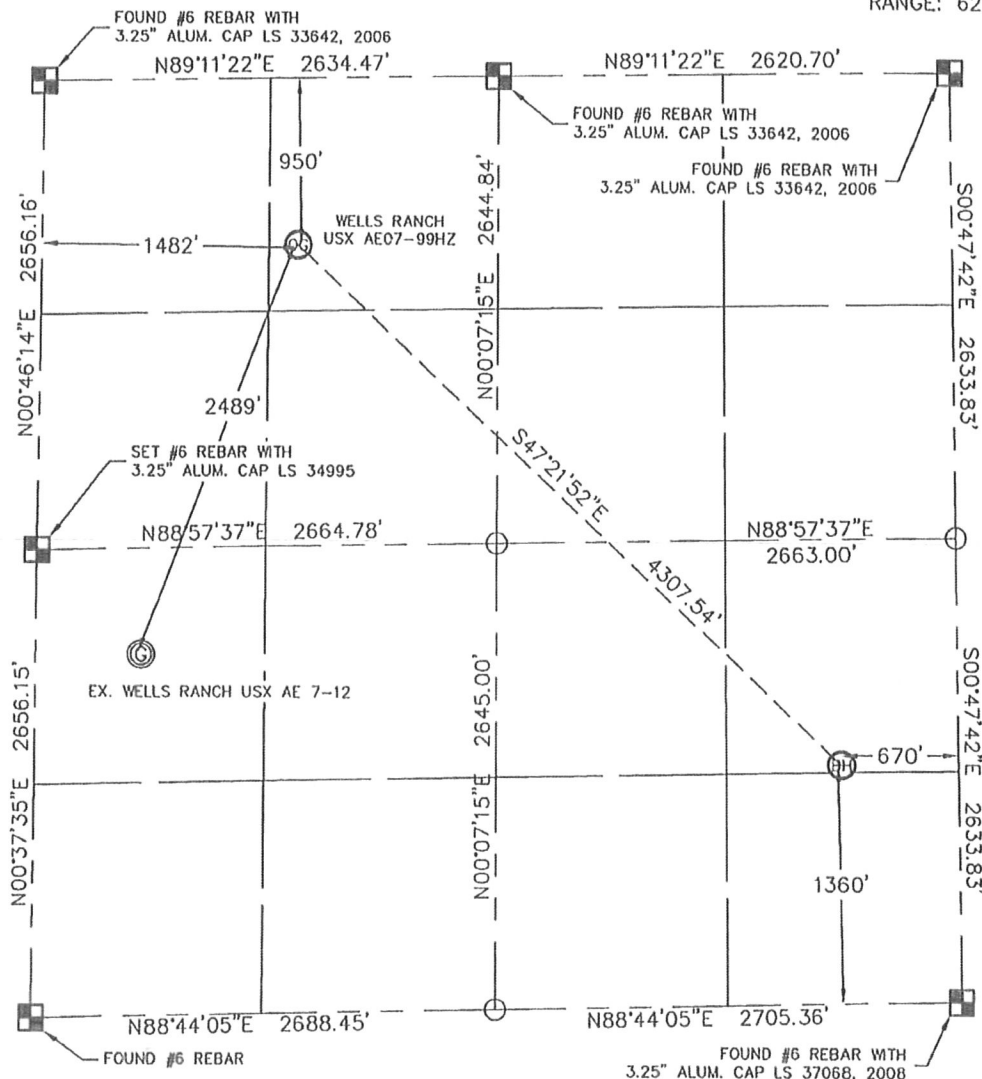


KING SURVEYORS, INC. 650 E. GARDEN DR. WINDSOR, CO 80550

WELL LOCATION CERTIFICATE

THIS MAP DOES NOT REPRESENT A BOUNDARY SURVEY

SECTION: 7
TOWNSHIP: 6N
RANGE: 62W



In accordance with a request from Sean Casper with Noble Energy Inc., King Surveyors Inc. has determined the surface location of the WELLS RANCH USX AE07-99HZ to be 950' from the NORTH line and 1482' from the WEST line and the bottom hole to be 1360' from the SOUTH line and 670' from the EAST line as measured at right angles from the section line of Section 7, Township 6 North, Range 62 West of the Sixth Principal Meridian, County of Weld, State of Colorado.

I hereby state that this Well Location Certificate was prepared by me, or under my direct supervision, that the fieldwork was completed on 10-22-09, for and on behalf of Noble Energy Inc.. That this is not a Land Survey Plat or an Improvement Survey Plat, and that it is not to be relied upon for establishment of fence, building, or other future improvement lines.



NOTE:

- 1) Bearings shown are Grid Bearings of the Colorado State Plane Coordinate System, North Zone, North American Datum 1983/2007. The lineal dimensions as contained herein are based upon the "U.S. Survey Foot."
- 2) Ground elevations are based on an observed GPS elevation (NAVD 1988 DATUM).
- 3) NEAREST EXISTING WELL: WELLS RANCH USX AE 7-12 2489' SOUTHWEST
- 4) IMPROVEMENTS: See VISIBLE IMPROVEMENTS exhibit for all visible improvements within 400' of well head.
- 5) SURFACE USE: DRYLAND, PASTURE

NOTE

According to Colorado law, you must commence any legal action based upon any defect in this W.L.C. within three years after you discover such defect. In no event, may any action based upon any defect in this survey be commenced more than ten years after the date of the certificate shown hereon. (13-80-105 C.R.S.)

LEGEND

-  = ALIQUOT MONUMENT AS DESCRIBED
-  = CALCULATED POSITION

SURFACE LOCATION
LATITUDE: 40.50580°N
LONGITUDE: 104.36959°W
PDOP: 1.3
ELEV: 4904
1/4, 1/4: NE1/4NW1/4

BOTTOM HOLE
LATITUDE: 40.49768°N
LONGITUDE: 104.35833°W

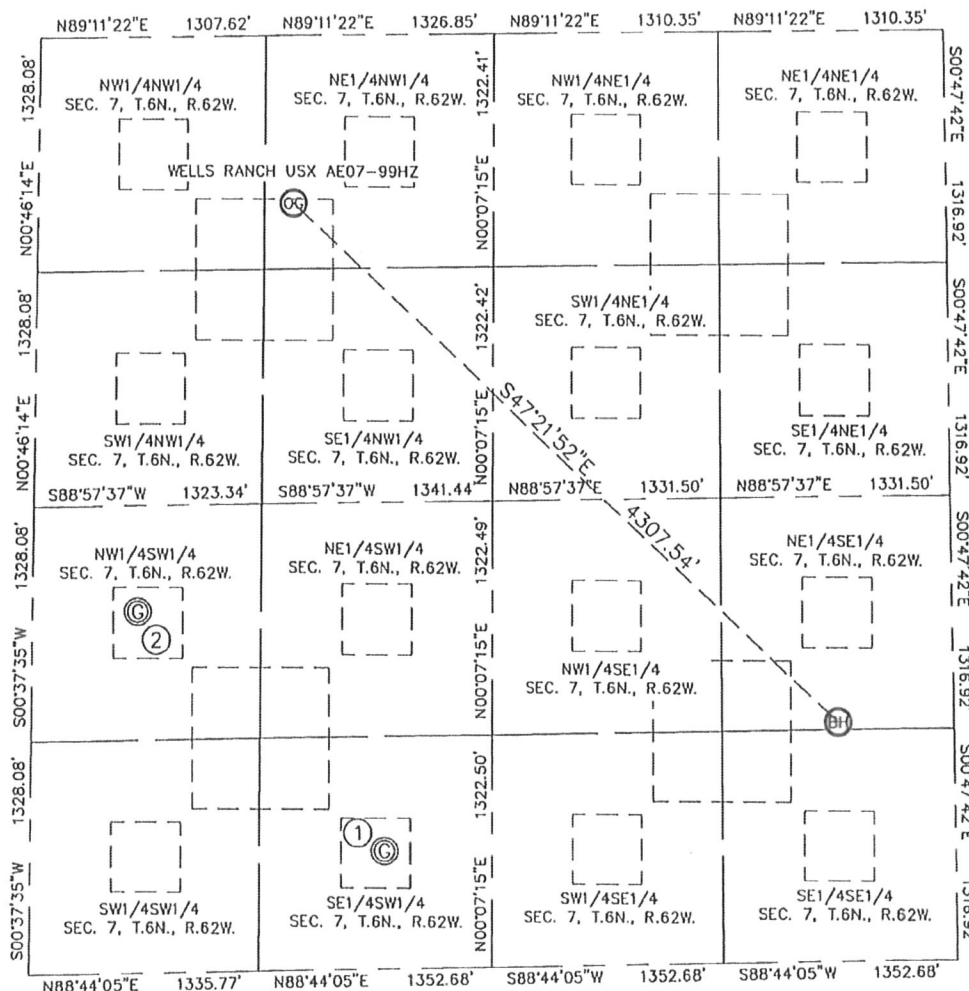
NEAREST PROPERTY LINE: 950' NORTH

Steven A. Lund on behalf of King Surveyors, Inc.
Licensed Land Surveyor No. 334995
State of Colorado

PROJECT#: 2009356

KING SURVEYORS, INC. 650 E. GARDEN DR. WINDSOR, CO 80550
SITE SKETCH

SECTION: 7
 TOWNSHIP: 6N
 RANGE: 62W



①

WELLS RANCH USX AE 7-14
 SE1/4SW1/4
 674' FSL
 2059' FWL
 LAT-40.49573N
 LONG-104.36784W
 PDOP: 1.4
 ELEV: 4904

②

WELLS RANCH USX AE 7-12
 NW1/4SW1/4
 2051' FSL
 603' FWL
 LAT-40.49947N
 LONG-104.37296W
 PDOP: 1.4
 ELEV: 4872

