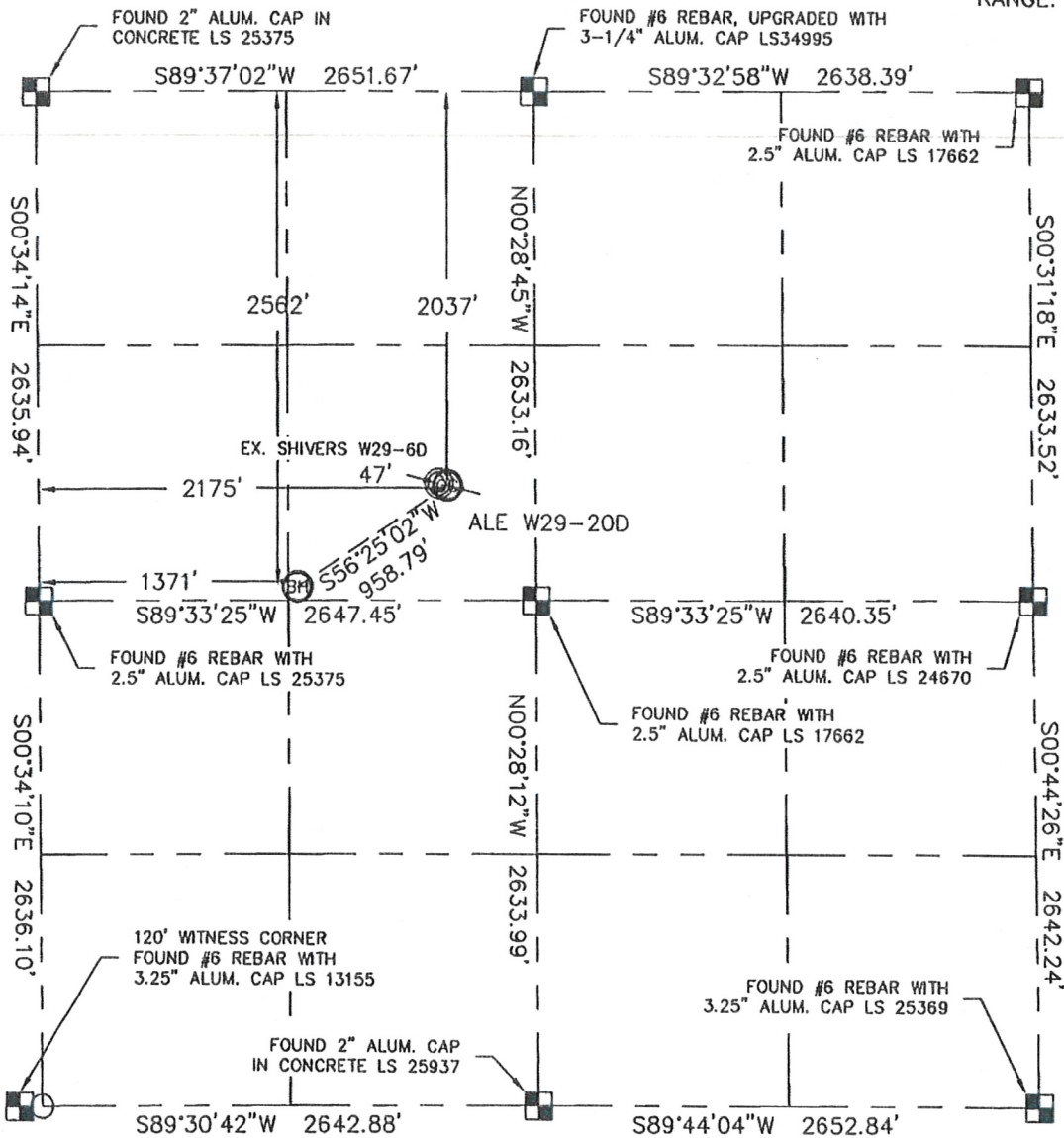


WELL LOCATION CERTIFICATE

THIS MAP DOES NOT REPRESENT A BOUNDARY SURVEY

SECTION: 29
TOWNSHIP: 2N
RANGE: 66WIn accordance with a request from Roger Lowe with Noble Energy Inc.

King Surveyors Inc. has determined the surface location of the ALE W29-20D to be 2037' from the NORTH line and 2175' from the WEST line and the bottom hole to be 2562' from the NORTH line and 1371' from the WEST line as measured at right angles from the section line of Section 29, Township 2 North, Range 66 West of the Sixth Principal Meridian, County of Weld, State of Colorado.

I hereby state that this Well Location Certificate was prepared by me, or under my direct supervision, that the fieldwork was completed on 4/29/09, for and on behalf of Noble Energy Inc. That this is not a Land Survey Plat or an Improvement Survey Plat, and that it is not to be relied upon for establishment of fence, building, or other future improvement lines.

NOTE:

- 1) Bearings shown are Grid Bearings of the Colorado State Plane Coordinate System, North Zone, North American Datum 1983/2007. The lineal dimensions as contained herein are based upon the "U.S. Survey Foot."
- 2) Ground elevations are based on an observed GPS elevation (NAVD 1988 DATUM).
- 3) NEAREST EXISTING WELL: SHIVERS W29-6D 47' WEST
- 4) IMPROVEMENTS: See VISIBLE IMPROVEMENTS exhibit for all visible improvements within 400' of well head.
- 5) SURFACE USE: EXISTING WELL SITE, CROP FIELD

SURFACE LOCATION
LATITUDE: 40.11075°N
LONGITUDE: 104.80281°W
PDOP: 1.1
ELEV: 4889
1/4, 1/4: SE1/4NW1/4

BOTTOM HOLE
LATITUDE: 40.10931°N
LONGITUDE: 104.80568°W

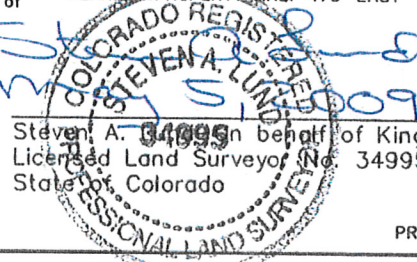
NEAREST PROPERTY LINE: 473' EAST

NOTE

According to Colorado law, you must commence any legal action based upon any defect in this W.L.C. within three years after you discover such defect. In no event, may any action based upon any defect in this survey be commenced more than ten years after the date of the certificate shown hereon. (13-80-105 C.R.S.)

LEGEND

- = ALIQUOT MONUMENT AS DESCRIBED
 = CALCULATED POSITION

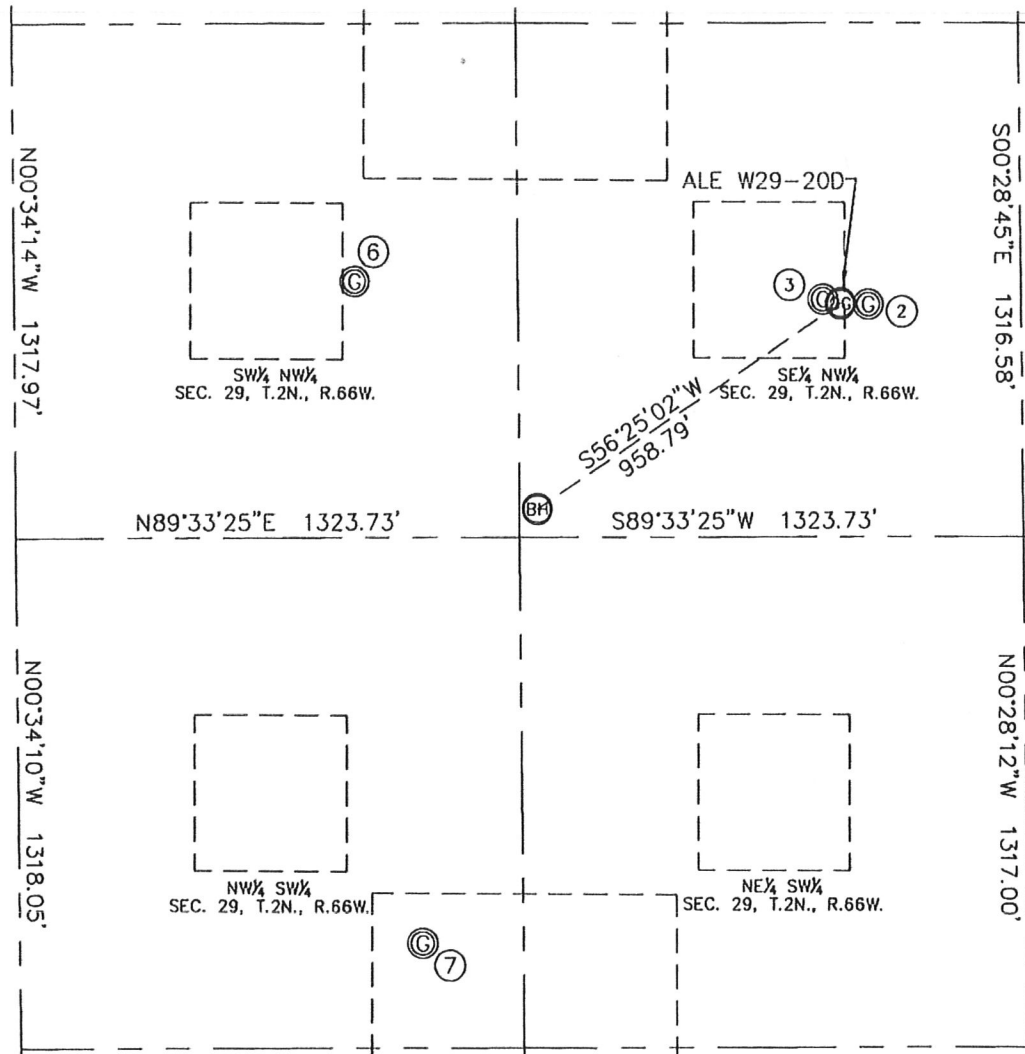


Steven A. Lunde on behalf of King Surveyors, Inc.
Licensed Land Surveyor No. 34995
State of Colorado

PROJECT#: 2008437

KING SURVEYORS, INC. 650 E. GARDEN DR. WINDSOR, CO 80550
SITE SKETCH

SECTION: 29
 TOWNSHIP: 2N
 RANGE: 66W



②
 APPEL NO 1-A
 SE1/4NW1/4
 2039' FNL
 2249' FWL
 LAT-40.11076°N
 LONG-104.80251°W
 PDOP: 1.2
 ELEV: 4890

③
 SHIVERS W 29-6D
 SE1/4NW1/4
 2026' FNL
 2129' FWL
 LAT-40.11079°N
 LONG-104.80296°W
 PDOP: 1.2
 ELEV: 4890

⑥
 APPEL 4-29
 SW1/4NW1/4
 1979' FNL
 894' FWL
 LAT-40.11091°N
 LONG-104.80739°W
 PDOP: 1.5
 ELEV: 4886

⑦
 PUTNAM #1
 NW1/4SW1/4
 1590' FSL
 1058' FWL
 LAT-40.10624°N
 LONG-104.80679°W
 PDOP: 1.4
 ELEV: 4893

