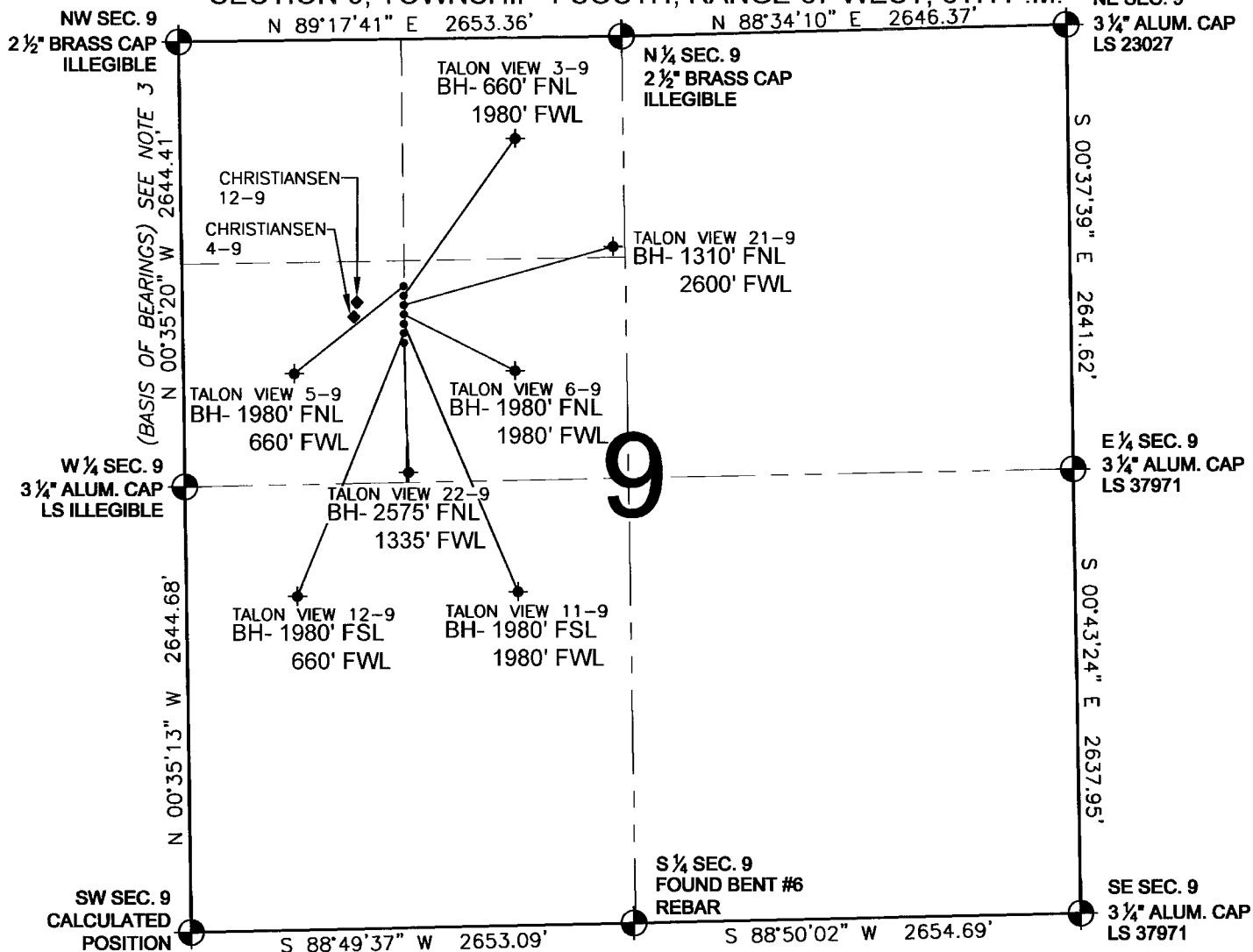


PAD DRAWING - TALON VIEW 7 PAD

SECTION 9, TOWNSHIP 1 SOUTH, RANGE 67 WEST, 6TH P.M.



LEGEND

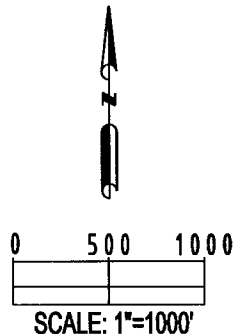
- = EXISTING MONUMENT ♦ = BOTTOM HOLE BH= BOTTOM HOLE
 ● = PROPOSED WELL ♦ = EXISTING WELL

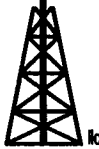
NOTES:

- THIS SURVEY WAS DONE BY GPS METHODS AND CONFORMS TO THE MINIMUM STANDARDS SET BY THE C.O.G.C.C., RULE NO. 215.
- ELEVATIONS SHOWN AT THE WELL HEAD, AS WELL AS HORIZONTAL CONTROL, ARE BASED ON GPS-RTK VALUES DERIVED FROM DOING 2-HOUR STATIC GPS SESSIONS AND REDUCTIONS USING O.P.U.S. SOLUTIONS.
VERTICAL = NAVD88; HORIZONTAL = NAD83/92
- THE BEARINGS SHOWN HEREON ARE BASED ON GPS OBSERVATIONS BETWEEN THE MONUMENTS SHOWN HEREON AS FOUND ON THE FIELD DATE BELOW.
- DISTANCES SHOWN ARE AT GROUND LEVEL, AS MEASURED IN THE FIELD, WITH TIES TO WELLS MEASURED AT A PERPENDICULAR TO SECTION LINES.

NOTES:

- TALON VIEW 5-9 TO BE AT 1469' FNL, 1321' FWL.
 BOTTOM HOLE AT 1980' FNL & 660' FWL.
 TALON VIEW 3-9 TO BE AT 1484' FNL, 1321' FWL.
 BOTTOM HOLE AT 660' FNL & 1980' FWL.
 TALON VIEW 21-9 TO BE AT 1499' FNL, 1321' FWL.
 BOTTOM HOLE AT 1310' FNL & 2600' FWL.
 TALON VIEW 6-9 TO BE AT 1514' FNL, 1321' FWL.
 BOTTOM HOLE AT 1980' FNL & 1980' FWL.
 TALON VIEW 11-9 TO BE AT 1529' FNL, 1321' FWL.
 BOTTOM HOLE AT 1980' FSL & 1980' FWL.
 TALON VIEW 12-9 TO BE AT 1544' FNL, 1321' FWL.
 BOTTOM HOLE AT 1980' FSL & 660' FWL.
 TALON VIEW 22-9 TO BE AT 1559' FNL, 1321' FWL.
 BOTTOM HOLE AT 2575' FNL & 1335' FWL.



REVISIONS		PREPARED BY:	 PFS Petroleum Field Services, LLC 1801 W. 13th Ave. Denver, CO 80204
INITIAL	DATE		

KERR-MCGEE OIL & GAS ONSHORE LP

FIELD DATE:
07-29-09

PAD NAME:
TALON VIEW 7 PAD

DRAWING DATE:
08-03-09

SURFACE LOCATION:

BY:
SMF

WELD COUNTY, COLORADO
SW 1/4 NW 1/4, SEC. 9, T1S, R67W