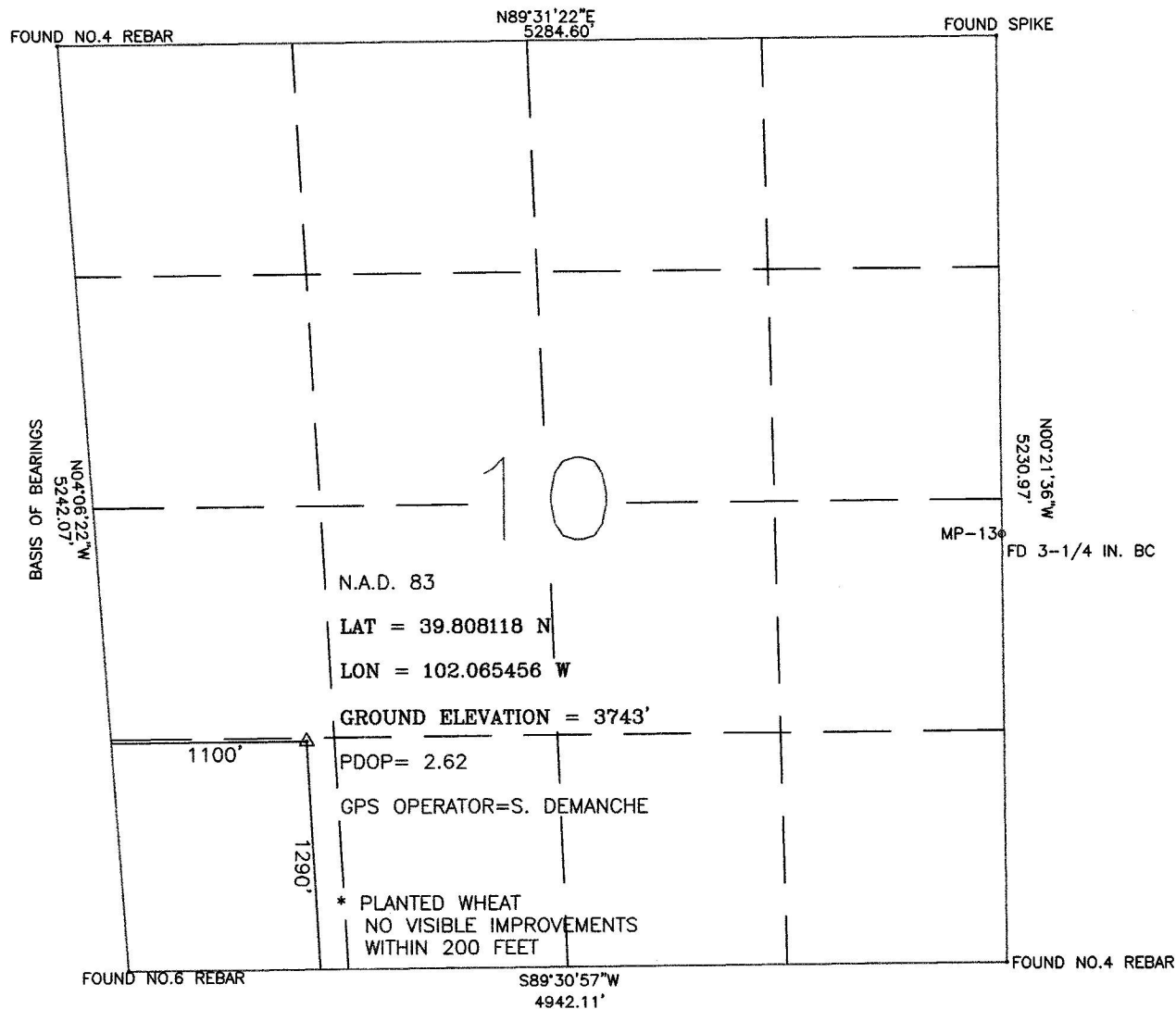


# WELL LOCATION CERTIFICATE: SOEHNER 14-10

SECTION 10, TOWNSHIP, 3 SOUTH, RANGE 42 WEST, 6TH P.M.  
YUMA COUNTY, COLORADO



I HEREBY STATETO PETROLEUM DEVELOPMENT CORP THAT THIS WELL LOCATION CERTIFICATE INDICATES THE WELL SOEHNER 14-10 TO BE LOCATED 1290' FSL AND 1100 FWL, SEC10, T3S, R42W, 6TH P.M. YUMA COUNTY, STATE OF KANSAS

BASIS OF BEARINGS AS SHOWN ABOVE

GROUND ELEVATION SHOWN IS APPROXIMATE AND IS BASED ON AN OBSERVED GPS ELEVATION (NAVD 1988DATUM)

LAT AND LON SHOWN ARE BASED ON AN OBSERVED GPS OBSERVATION (NAD 1983/92) WITH A PDOP VALUE LESS THAN SIX

ALL DISTANCES ARE FIELD MEASURED UNLESS OTHERWISE NOTIFIED

DISTANCES TO WELL ARE PERPENDICULAR TO SECTION LINES

FIELD DATE: 10/04/09

DRAWN DATE: 10/11/09

DRAWN BY: KER

THIS IS NOT A MONUMENTED BOUNDARY SURVEY, IT IS A DRAWING INTENDED TO DEPICT WELL LOCATION IN REFERENCE TO SECTION LINES

