

# COLORADO WELL LOCATION

OPERATOR: Pioneer Natural Resources

WELL NAME: Barrow 33-8 TR (Revised)

SECTION 8 TOWNSHIP 32 S, RANGE 66 W OF THE 6TH P.M., IN LAS ANIMAS COUNTY

ACTUAL FOOTAGE OF WELL LOCATION:

2211 feet from the EAST line and 1849 feet from the SOUTH line.

GROUND ELEV. (NGVD29):

8022'

BASIS OF BEARING: GPS Observations

BASIS OF ELEVATION: GPS Observations

PDOP: 1.9

SURFACE USE: Timber

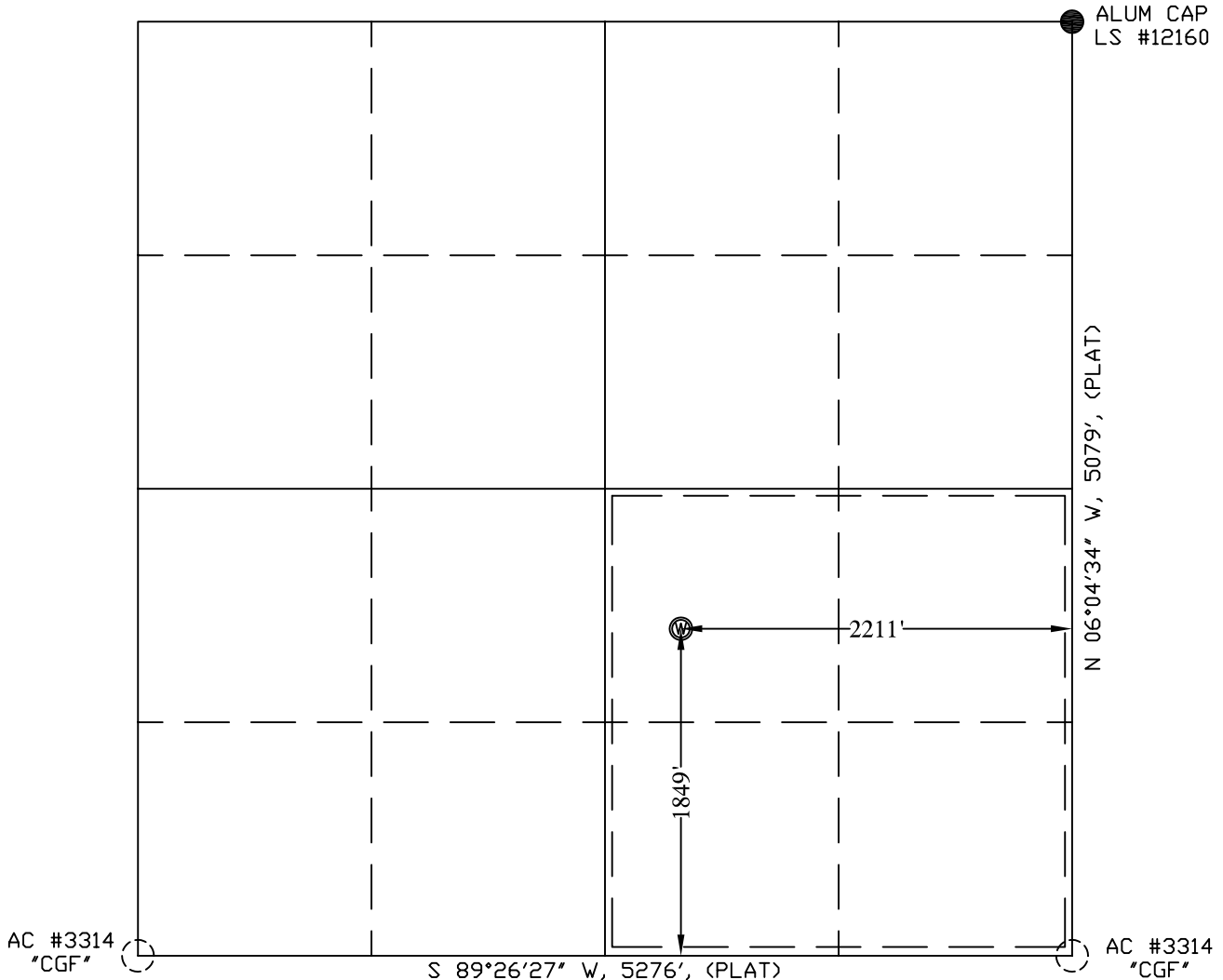
DATE STAKED: August 29, 2007

LAT: N 37.27084°

LONG: W 104.80183° (NAD27)

LAT: N 37.27085°

LONG: W 104.80237° (NAD83)



250 0 250 500 1000  
(in feet)  
1 inch = 1000 ft.

## LEGEND:

- ⊙ = WELL LOCATION
- = SURVEY MARKER (SEE DRAWING)
- = CALCULATED POINT
- = LOCATION FURNISHED BY PNRC.

Field Operator: R. Coberly

## NOTICE:

SOME INFORMATION SHOWN HEREON IS BASED ON INFORMATION TAKEN FROM RECORD INFORMATION, PREVIOUS SURVEYS, PLATS AND SURVEYS BY OTHER SURVEYORS, OR COLLATORAL EVIDENCE AND MAY NOT REFLECT THAT WHICH MAY BE DISCLOSED BY A COMPLETE BOUNDARY SURVEY. **THIS SKETCH IS NOT TO BE RELIED UPON FOR THE ESTABLISHMENT OF SURFACE BOUNDARIES, FENCES, BUILDINGS OR OTHER FUTURE IMPROVEMENTS.**

I hereby certify that this proposed well location shown was plotted from field notes of a actual GIS survey and meets the requirements of Colorado Statue 38-51-109.3 and was made by me or under my supervision, and that the same is true and correct to the best of my knowledge and belief and **IS NOT A LAND SURVEY PLAT.**

## NOTE:

ALL WELL LOCATIONS AND ELEVATIONS DERIVED FROM OBSERVED GPS DATA AND DIFFERENTIALLY CORRECTED TO CORS STATION PUEBLO 1 (PID #AJ6946) AND MEET AND/OR EXCEED COGCC RULE 303c AND RULE 215a-h.

NO VISIBLE IMPROVEMENTS WITHIN 200 FEET OF PROPOSED WELLHEAD UNLESS NOTED OTHERWISE.

DISTANCES ARE MEASURED AT 90° (NINTY DEGREES) FROM SAID SECTION LINES TO THE WELL LOCATION.

DESIRED PDOP MAY NOT BE OBTAINED DUE TO NATIVE CONDITIONS OF SITE.

*Lee Shields*  
August 30, 2007 (REVISED SHEET)  
Lee Shields, CO PLS #37960 Date Platted

SHIELDS SURVEY L<sup>td</sup>. C<sup>o</sup>. Raton, New Mexico 87740  
(505)445-1232