

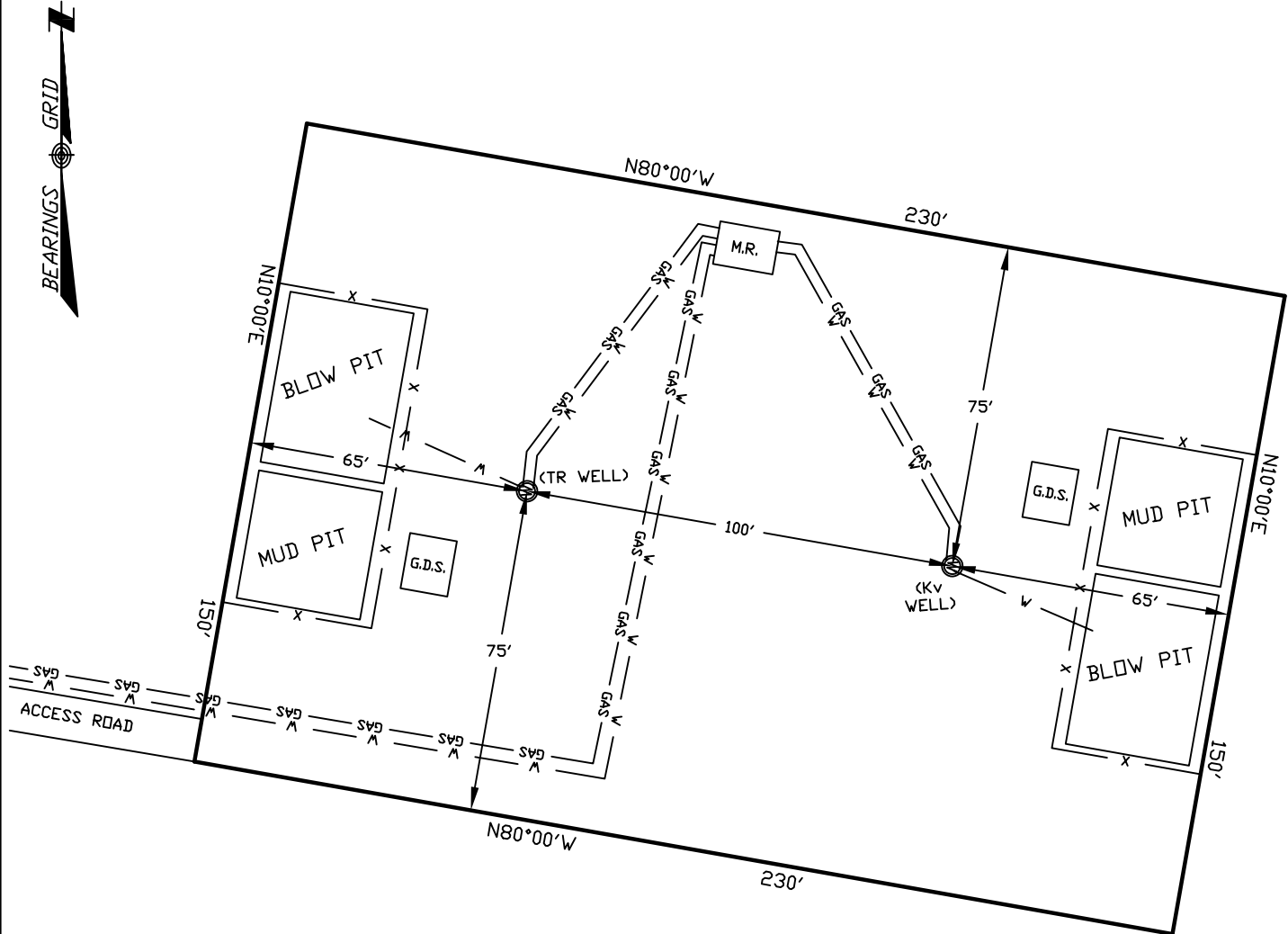
WELLSITE/PRODUCTION EQUIPMENT LAYOUT

OPERATOR: Pioneer Natural Resources

WELL NAME: Barrow 33-8Tr

NWSE of SECTION 8 TOWNSHIP 32 S, RANGE 66 W OF THE 6TH P.M., IN LAS ANIMAS COUNTY

DUAL-WELL PAD LAYOUT



NOTE:

MUD AND BLOW PITS WILL BE CONVERTED TO UNLINED EVAPORATION PITS FOR PRODUCTION.

WELLHEADS ARE TYPICALLY PCP DRIVE HEADS

March 08, 2006

Date Platted

GRAPHIC SCALE



(IN FEET)

1 inch = 40 ft.

LEGEND:

- = WELLHEAD
- = EXISTING WELLPAD
- = FENCE (4 STRAND)
- = 4" GAS GATHERING LINE
- = 3" WATER LINE
- M.R. = COMBO METER RUN AND WATER/GAS SEPARATOR
- G.D.S. = GAS DRIVE SYSTEM

SHIELDS SURVEY L^{td}. C^o.
Raton, New Mexico 87740
(505)445-1232