

# MULTI-WELL PLAN

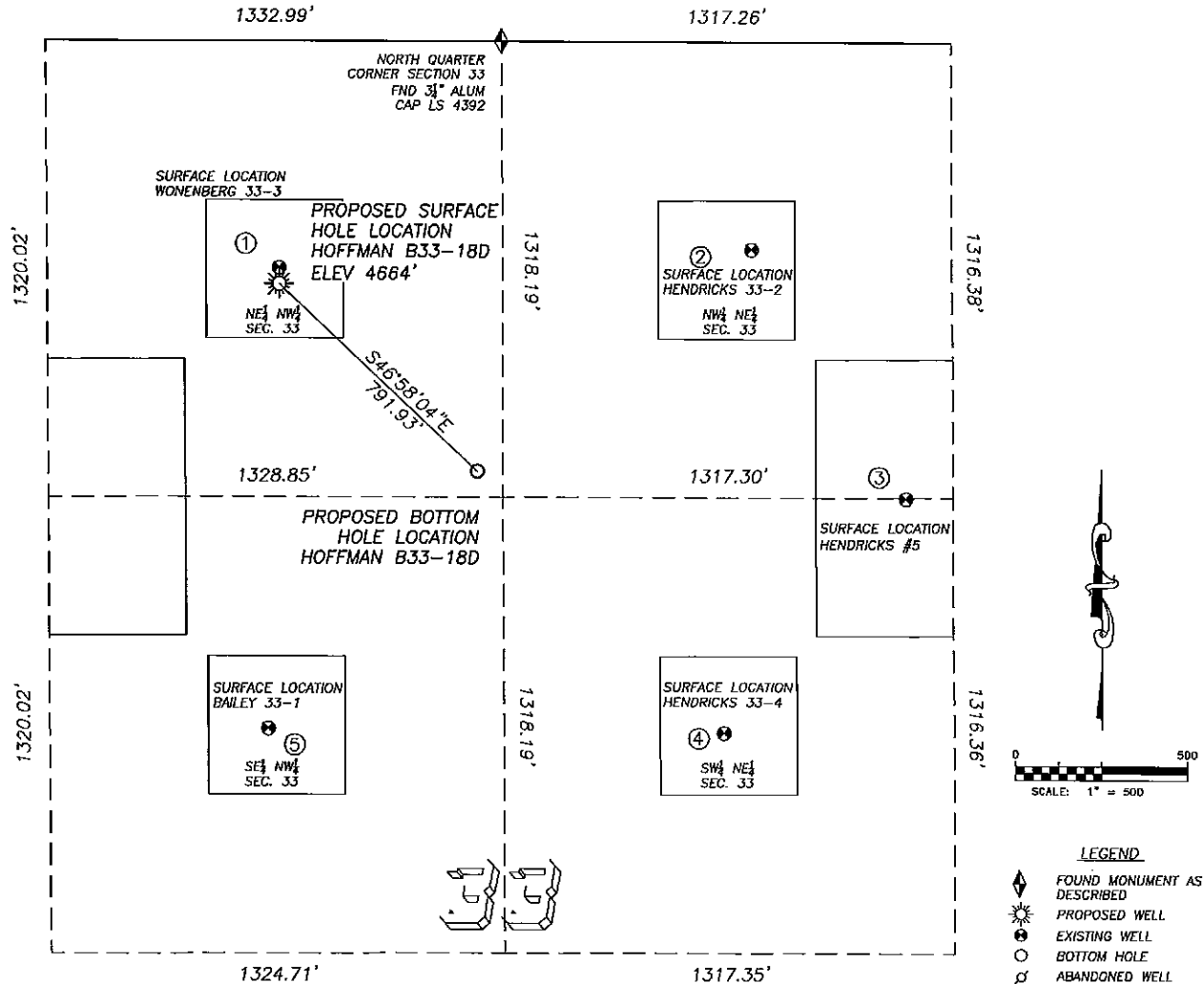
DALEY LAND SURVEYING, INC.

PARKER, CO. 80134

303 953 9841

## SITE SKETCH HOFFMAN B33-18D

SECTION 33, TOWNSHIP 5 NORTH, RANGE 64 WEST OF THE 6TH PRINCIPLE MERIDIAN



- |  |   |   |  |  |
|--|---|---|--|--|
| <p>① <b>WONENBERG 33-3</b><br/>NE/NW SEC. 33<br/>656' FNL, 2010' FWL<br/>825' NW OF PROPOSED<br/>BOTTOM HOLE LOCATION<br/>LAT. N40.36123°<br/>LONG. W104.55697°<br/>EL: 4664'<br/>PDOP 2.3</p> | <p>② <b>HENDRICKS 33-2</b><br/>NW/NE SEC. 33<br/>601' FNL, 1903' FEL<br/>1029' NE OF PROPOSED<br/>BOTTOM HOLE LOCATION<br/>LAT. N40.36138°<br/>LONG. W104.55201°<br/>EL: 4643'<br/>PDOP 1.5</p> | <p>③ <b>HENDRICKS #5</b><br/>SW/NE SEC. 33<br/>1320' FNL, 1455' FEL<br/>1257' E OF PROPOSED<br/>BOTTOM HOLE LOCATION<br/>LAT. N40.35941°<br/>LONG. W104.55039°<br/>EL: 4645'<br/>PDOP 1.2</p> | <p>④ <b>HENDRICKS 33-4</b><br/>SW/NE SEC. 33<br/>1998' FNL, 1990' FEL<br/>1045' SE OF PROPOSED<br/>BOTTOM HOLE LOCATION<br/>LAT. N40.35755°<br/>LONG. W104.55230°<br/>EL: 4664'<br/>PDOP 2.2</p> | <p>⑤ <b>BAILEY 33-1</b><br/>SE/NW SEC. 33<br/>1988' FNL, 1986' FWL<br/>963' SW OF PROPOSED<br/>BOTTOM HOLE LOCATION<br/>LAT. N40.35757°<br/>LONG. W104.55708°<br/>EL: 4687'<br/>PDOP 2.6</p> |
|--|---|---|--|--|

### NOTES:

- 1) THIS DOES NOT REPRESENT A BOUNDARY SURVEY
- 2) THE LATITUDES AND LONGITUDES SHOWN ARE REFERENCED TO NAD83
- 3) DATUM FOR ELEVATION IS NAVD88. ELEVATIONS ARE DERIVED FROM GPS-RTK OBSERVATIONS PROCESSED THROUGH OPUS, UTILIZING THE GEOID03 MODEL.