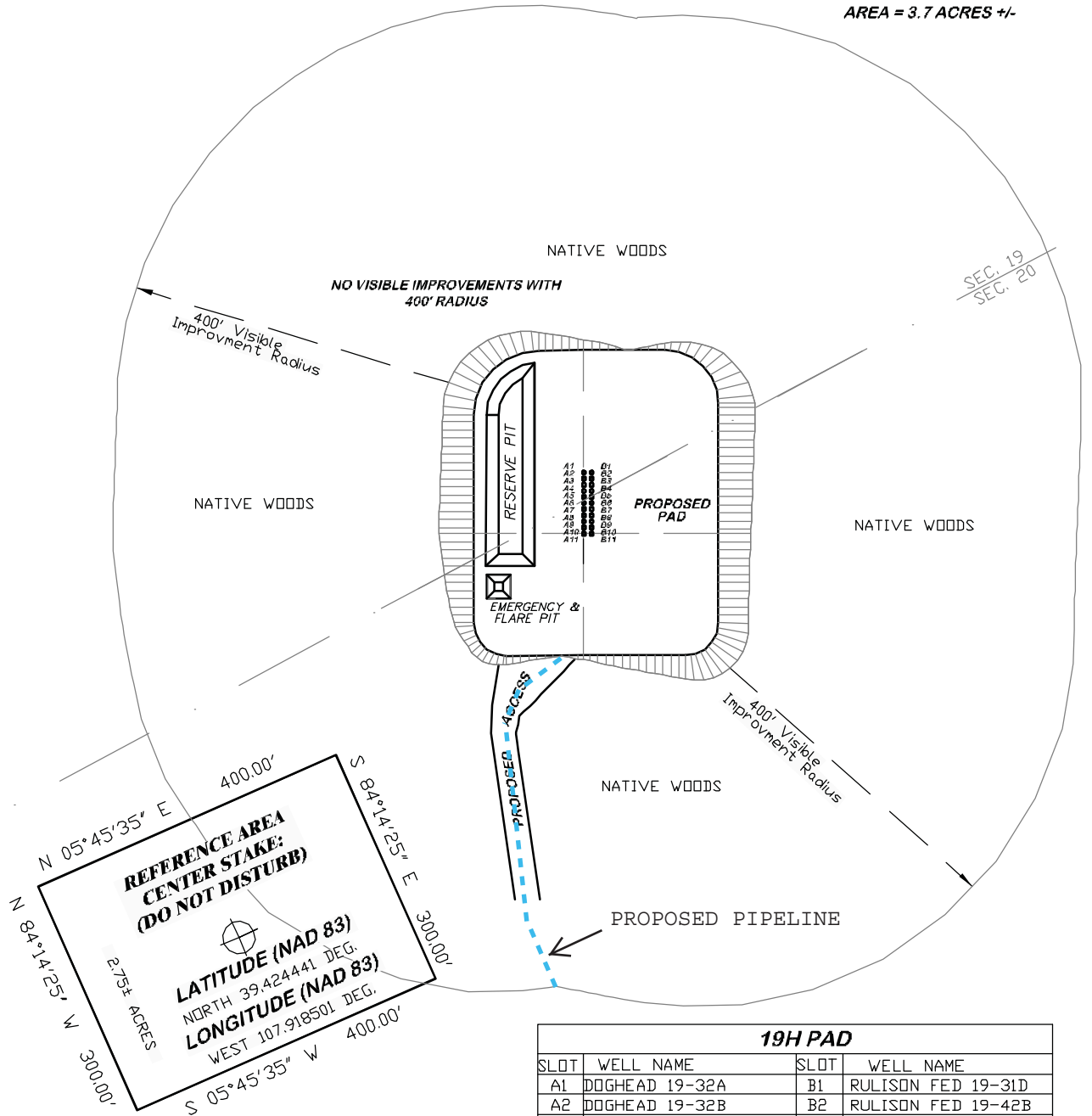


UNGRADED ELEVATION: 7880.6'
 FINISHED ELEVATION: 7876.0'
 ESTIMATED DISTURBANCE
 AREA = 3.7 ACRES +/-

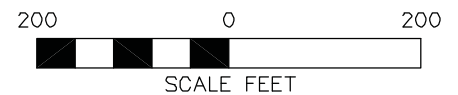


19H PAD			
SLOT	WELL NAME	SLOT	WELL NAME
A1	DOGHEAD 19-32A	B1	RULISON FED 19-31D
A2	DOGHEAD 19-32B	B2	RULISON FED 19-42B
A3	OPEN	B3	OPEN
A4	OPEN	B4	OPEN
A5	DOGHEAD 19-32C	B5	OPEN
A6	RULISON FED 19-42C	B6	RULISON FED 19-31C
A7	DOGHEAD 19-32D	B7	OPEN
A8	DOGHEAD 19-33A	B8	OPEN
A9	DOGHEAD 19-33B	B9	OPEN
A10	RULISON FED 19-42D	B10	RULISON FED 19-42A
A11	RULISON FED 19-43A	B11	RULISON FED 19-41D

**BEFORE DIGGING
CALL FOR
UTILITY LINE LOCATION**

NOTE: THE EARTH QUANTITIES ON
THIS DRAWING ARE ESTIMATED
AND THE USE OF IS AT THE
RESPONSIBILITY OF THE USER.

19 "H" PAD



DRIFIN & ASSOCIATES, INC.
 1414 ELK ST., ROCK SPRINGS, WY 82901

(307) 362-5028

DRAWN: 10/04/08 - RCR

SCALE: 1" = 200'

REVISED: 11/04/09-WWG

DRG JOB No. 17005

REVISED 400' RADIUS

EXHIBIT 2D

LOCATION DRAWING 24 OF 24

NOBLE ENERGY, INC.
RULISON FEDERAL 19-31C, 19-31D, 19-41D, 19-42A,
19-42B, 19-42C, 19-42D & 19-43A AND DOGHEAD
19-32A, 19-32B, 19-32C, 19-32D, 19-33A & 19-33B

SECTION 19 & 20, T. 7 S., R. 94 W., 6th P.M.
GARFIELD COUNTY, COLORADO