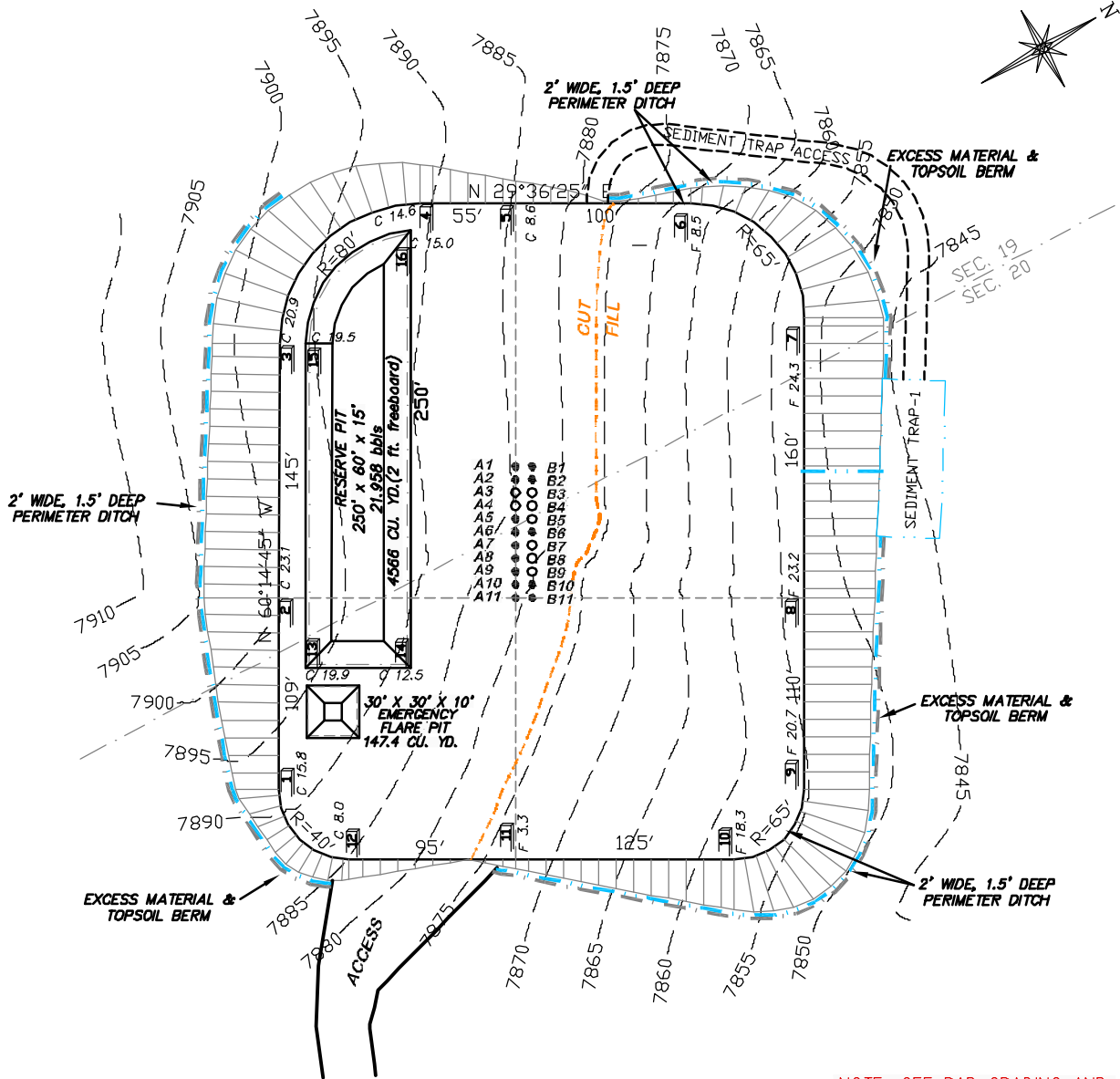


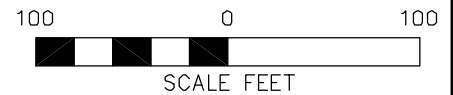
UNGRADED ELEVATION: 7880.6'  
 FINISHED ELEVATION: 7876.0'  
 ESTIMATED DISTURBANCE  
 AREA = 3.7 ACRES +/-



**BEFORE DIGGING  
CALL FOR  
UTILITY LINE LOCATION**

NOTE: THE EARTH QUANTITIES ON  
THIS DRAWING ARE ESTIMATED  
AND THE USE OF IS AT THE  
RESPONSIBILITY OF THE USER.

19 "H" PAD



**DRG** RIFFIN & ASSOCIATES, INC.  
 1414 ELK ST., ROCK SPRINGS, WY 82901  
 (307) 362-5028

**CONSTRUCTION LAYOUT DRAWING 1 OF 5**

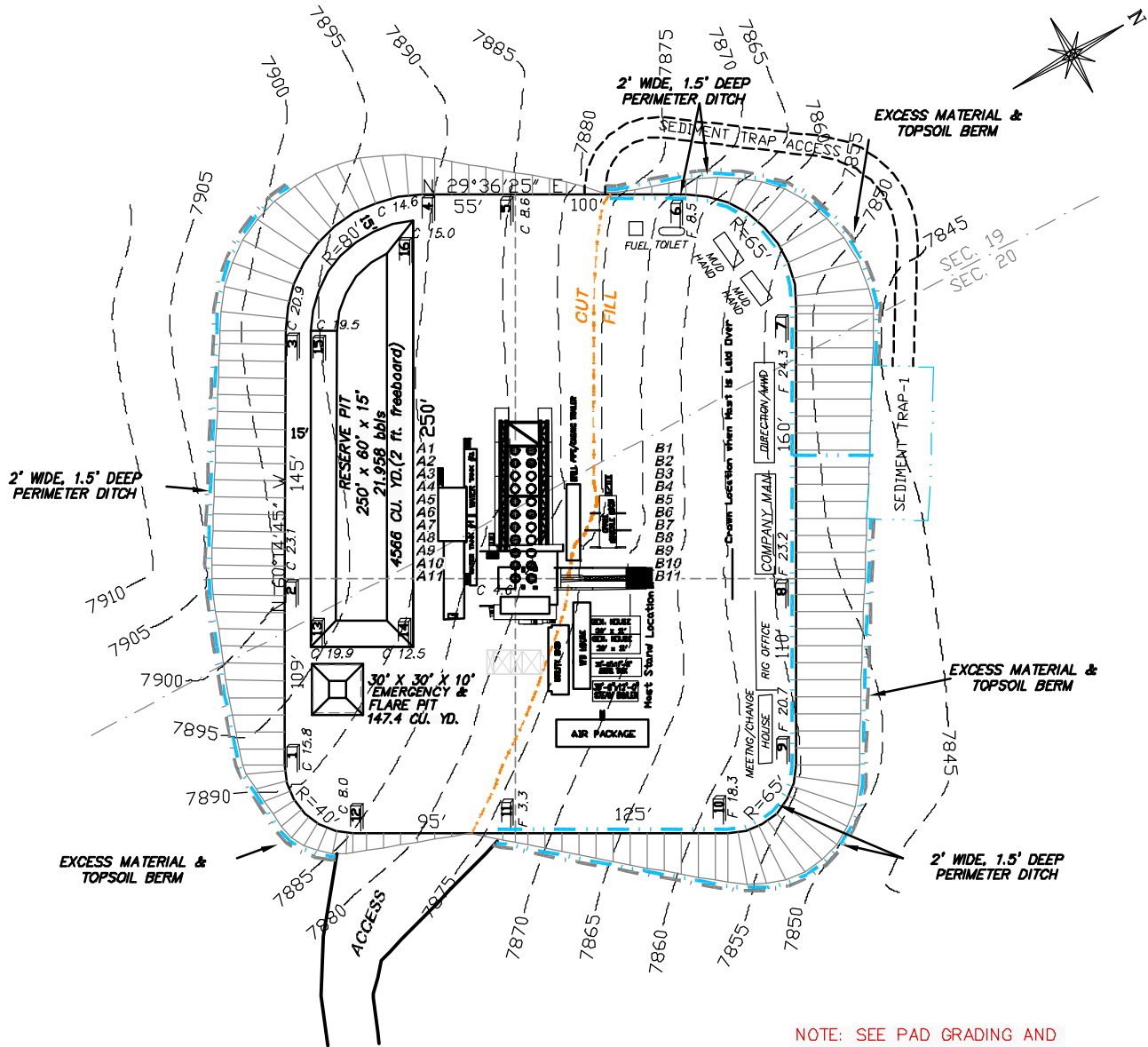
NOBLE ENERGY, INC. RULISON FEDERAL 19-31C, 19-31D, 19-41D, 19-42A,  
 19-42B, 19-42C, 19-42D & 19-43A AND DOGHEAD 19-32A, 19-32B, 19-32C,  
 19-32D, 19-33A & 19-33B

SECTION 19 & 20, T. 7 S., R. 94 W., 6th P.M.  
 GARFIELD COUNTY, COLORADO

**ESTIMATED EARTHWORK**

ITEM	CUT	FILL	TOPSOIL	EXCESS
PAD	36312 CY	28987 CY	5558 CY	1767 CY
PIT	4709 CY			4709 CY
TOTALS	41021 CY	28987 CY	5558 CY	6476 CY

UNGRADED ELEVATION: 7880.6'  
 FINISHED ELEVATION: 7876.0'  
 ESTIMATED DISTURBANCE  
 AREA = 3.7 ACRES +/-

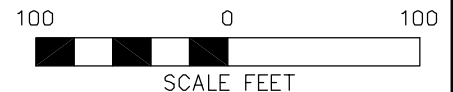


NOTE: SEE PAD GRADING AND  
 EROSION & SEDIMENT CONTROL  
 PLAN DESIGNED BY URS  
 ENGINEERS

**BEFORE DIGGING  
 CALL FOR  
 UTILITY LINE LOCATION**

NOTE: THE EARTH QUANTITIES ON  
 THIS DRAWING ARE ESTIMATED  
 AND THE USE OF IS AT THE  
 RESPONSIBILITY OF THE USER.

19H PAD			
SLOT	WELL NAME	SLOT	WELL NAME
A1	DOGHEAD 19-32A	B1	RULISON FED 19-31D
A2	DOGHEAD 19-32B	B2	RULISON FED 19-42B
A3	OPEN	B3	OPEN
A4	OPEN	B4	OPEN
A5	DOGHEAD 19-32C	B5	OPEN
A6	RULISON FED 19-42C	B6	RULISON FED 19-31C
A7	DOGHEAD 19-32D	B7	OPEN
A8	DOGHEAD 19-33A	B8	OPEN
A9	DOGHEAD 19-33B	B9	OPEN
A10	RULISON FED 19-42D	B10	RULISON FED 19-42A
A11	RULISON FED 19-43A	B11	RULISON FED 19-41D



19 "H" PAD

CONSTRUCTION LAYOUT DRAWING 2 OF 5



**RIFFIN & ASSOCIATES, INC.**  
 1414 ELK ST., ROCK SPRINGS, WY 82901

(307) 362-5028

**NOBLE ENERGY, INC.**  
**RULISON FEDERAL 19-31C, 19-31D, 19-41D, 19-42A,**  
**19-42B, 19-42C, 19-42D & 19-43A AND DOGHEAD**  
**19-32A, 19-32B, 19-32C, 19-32D, 19-33A & 19-33B**

SECTION 19 & 20, T. 7 S., R. 94 W., 6th P.M.  
 GARFIELD COUNTY, COLORADO

DRAWN: 10/04/08 - RCR

SCALE: 1" = 100'

REVISED: 10/29/09-WWG

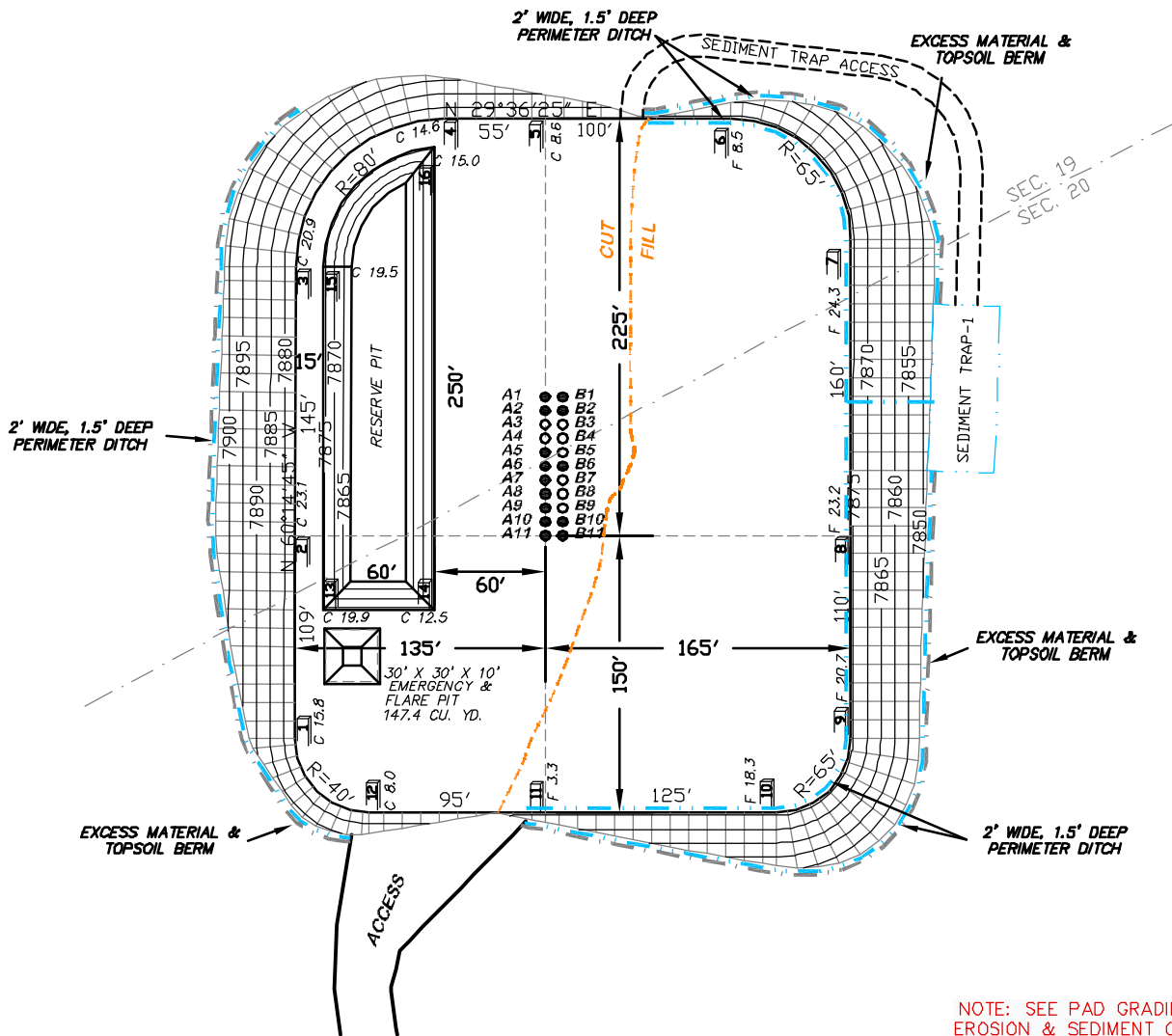
DRG JOB No. 17005

REVISED TITLE BLOCK

EXHIBIT 2A

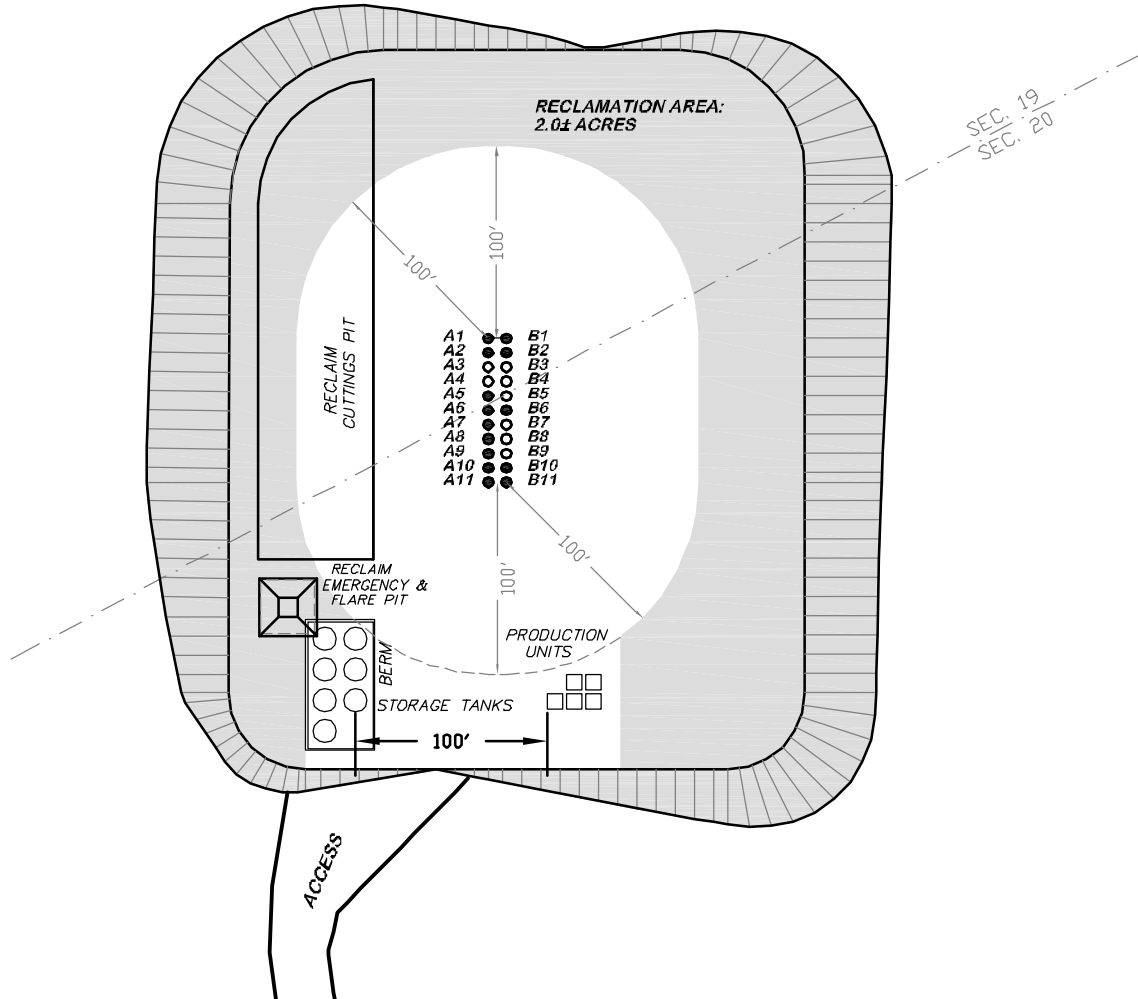
# DESIGN CONTOURS

UNGRADED ELEVATION: 7880.6'  
FINISHED ELEVATION: 7876.0'  
ESTIMATED DISTURBANCE  
AREA = 3.7 ACRES +/-



# RECLAMATION PLAN

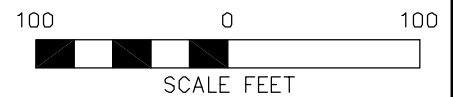
UNGRADED ELEVATION: 7880.6'  
FINISHED ELEVATION: 7876.0'  
ESTIMATED DISTURBANCE  
AREA = 3.7 ACRES +/-



**BEFORE DIGGING  
CALL FOR  
UTILITY LINE LOCATION**

NOTE: THE EARTH QUANTITIES ON  
THIS DRAWING ARE ESTIMATED  
AND THE USE OF IS AT THE  
RESPONSIBILITY OF THE USER.

19H PAD			
SLOT	WELL NAME	SLOT	WELL NAME
A1	DOGHEAD 19-32A	B1	RULISON FED 19-31D
A2	DOGHEAD 19-32B	B2	RULISON FED 19-42B
A3	OPEN	B3	OPEN
A4	OPEN	B4	OPEN
A5	DOGHEAD 19-32C	B5	OPEN
A6	RULISON FED 19-42C	B6	RULISON FED 19-31C
A7	DOGHEAD 19-32D	B7	OPEN
A8	DOGHEAD 19-33A	B8	OPEN
A9	DOGHEAD 19-33B	B9	OPEN
A10	RULISON FED 19-42D	B10	RULISON FED 19-42A
A11	RULISON FED 19-43A	B11	RULISON FED 19-41D



**19 "H" PAD**



(307) 362-5028

**DRG RIFFIN & ASSOCIATES, INC.**  
1414 ELK ST., ROCK SPRINGS, WY 82901

DRAWN: 10/04/08 - RCR

SCALE: 1" = 100'

REVISED: 10/29/09-WWG

DRG JOB No. 17005

REVISED TITLE BLOCK

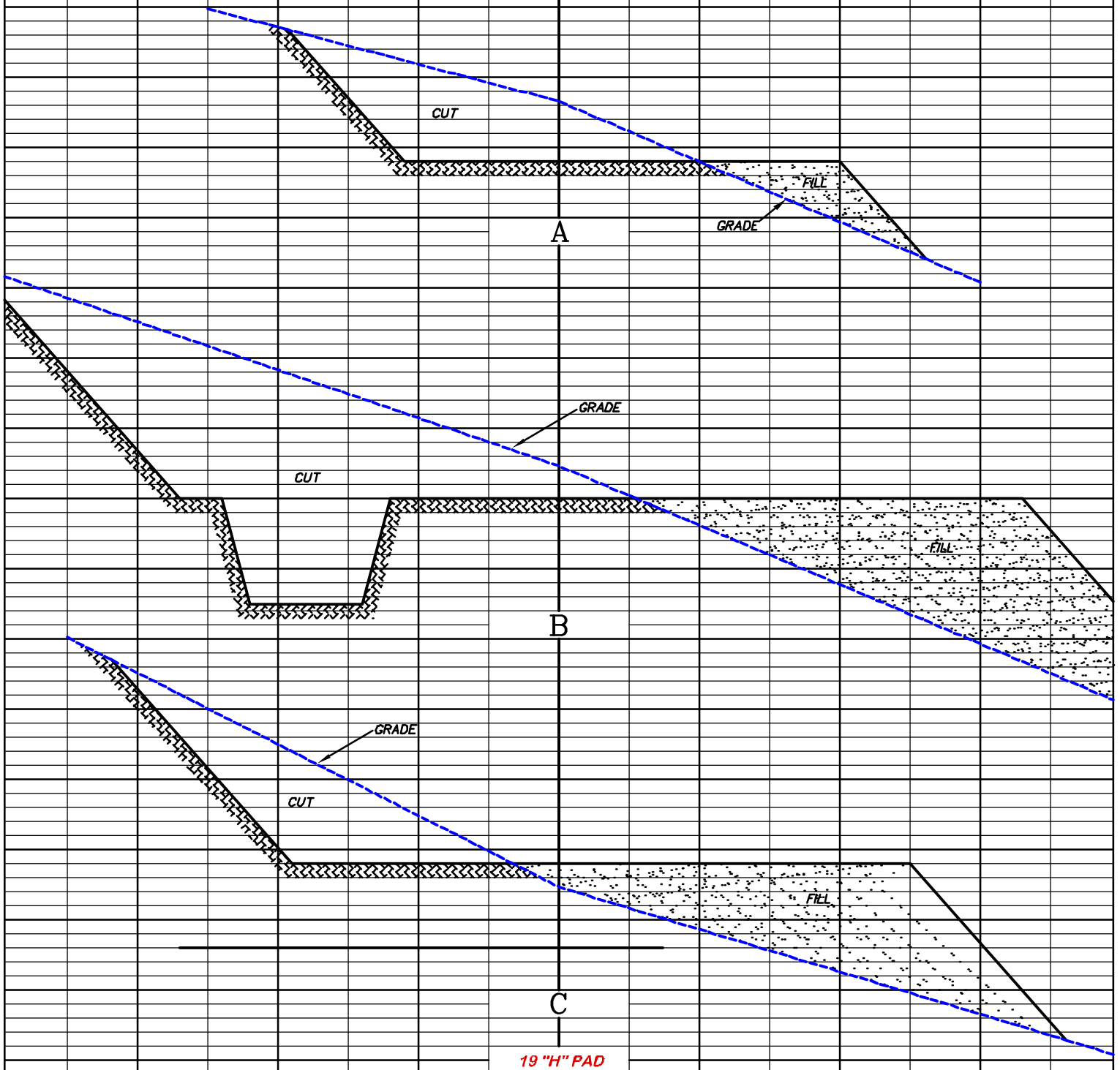
EXHIBIT 2C

## CONSTRUCTION LAYOUT DRAWING 4 OF 5

**NOBLE ENERGY, INC.**  
**RULISON FEDERAL 19-31C, 19-31D, 19-41D, 19-42A,**  
**19-42B, 19-42C, 19-42D & 19-43A AND DOGHEAD**  
**19-32A, 19-32B, 19-32C, 19-32D, 19-33A & 19-33B**

**SECTION 19 & 20, T. 7 S., R. 94 W., 6th P.M.**  
**GARFIELD COUNTY, COLORADO**

UNGRADED ELEVATION: 7880.6'  
FINISHED ELEVATION: 7876.0'



(307) 362-5028

**RIFFIN & ASSOCIATES, INC.**  
1414 ELK ST., ROCK SPRINGS, WY 82901

DRAWN: 10/04/08 - RCR

HORZ. 1" = 50' VERT. 1" = 20'

REVISED: 10/29/09-WWG

DRG JOB No.17005

REVISED TITLE BLOCK

EXHIBIT 3

**CONSTRUCTION LAYOUT 5 OF 5**

**NOBLE ENERGY, INC.**

**RULISON FEDERAL 19-31C, 19-31D, 19-41D, 19-42A,  
19-42B, 19-42C, 19-42D & 19-43A AND DOGHEAD  
19-32A, 19-32B, 19-32C, 19-32D, 19-33A & 19-33B**

**SECTION 19, T. 7 S., R. 94 W., 6th P.M.  
GARFIELD COUNTY, COLORADO**