

## Kubeczko, Dave

---

**From:** Kubeczko, Dave  
**Sent:** Monday, November 30, 2009 12:39 PM  
**To:** Kubeczko, Dave  
**Subject:** FW: K P Kauffman Company State 5-14, SWNW Sec 14 T4S R62W, Arapahoe County, Form 2A #1759683 Review  
**Attachments:** image001.gif; aerial for bldg distance State #5-14.pdf; siting State 5-14 wells\_sec 14-4S-62W\_distance to road.pdf

Scan No. 2032665      CORRESPONDENCE      Form 2A#1759683

---

**From:** Sean T. Glass [mailto:STGlass@kpk.com]  
**Sent:** Monday, November 23, 2009 3:41 PM  
**To:** Kubeczko, Dave  
**Subject:** FW: K P Kauffman Company State 5-14, SWNW Sec 14 T4S R62W, Arapahoe County, Form 2A #1759683 Review

---

**From:** Sherry Glass  
**Sent:** Mon 11/23/2009 2:48 PM  
**To:** Sean T. Glass  
**Subject:** FW: K P Kauffman Company State 5-14, SWNW Sec 14 T4S R62W, Arapahoe County, Form 2A #1759683 Review

Please forward this to:

[Dave.Kubeczko@state.co.us](mailto:Dave.Kubeczko@state.co.us)

My email keeps bouncing. Let me know if yours does also. Thanks

---

**From:** Sherry Glass  
**Sent:** Monday, November 23, 2009 2:33 PM  
**To:** 'Kubeczko, Dave'  
**Subject:** RE: K P Kauffman Company State 5-14, SWNW Sec 14 T4S R62W, Arapahoe County, Form 2A #1759683 Review

Here is an exhibit map I made showing distance to nearest building. Sorry, got both wrong on the form. Nearest distance to building is 3978', nearest distance to utility is same distance to road, shown at 3353' (always see those power lines along the road). Thank you!

---

**From:** Kubeczko, Dave [mailto:Dave.Kubeczko@state.co.us]  
**Sent:** Monday, November 23, 2009 2:17 PM  
**To:** Sherry Glass  
**Subject:** K P Kauffman Company State 5-14, SWNW Sec 14 T4S R62W, Arapahoe County, Form 2A #1759683 Review

Sherry,

I have been reviewing the K P Kauffman State 5-14 **Form 2A** (#1759683). COGCC requests the following clarifications

regarding the data K P Kauffman has submitted on or attached to the Form 2A prior to passing the Oil and Gas Location Assessment.

1. **Cultural (Section 9):** The Form 2A indicates distances to nearest building of 5280 feet and the nearest above ground utility of 5280 feet. During COGCC's review of the 2005 aerial photograph, the distance to the nearest building was 2233 feet, but I couldn't verify the distance to the nearest above ground utility. Could you let me know where and how the nearest above ground utility was located. I can make the changes if you send an email with this request.

These are minor changes and I would like to pass this Form 2A. If you have any questions, please do not hesitate to call me at (970) 625-2497 x5 (office) or (970) 309-2514 (cell), or email. Thanks.

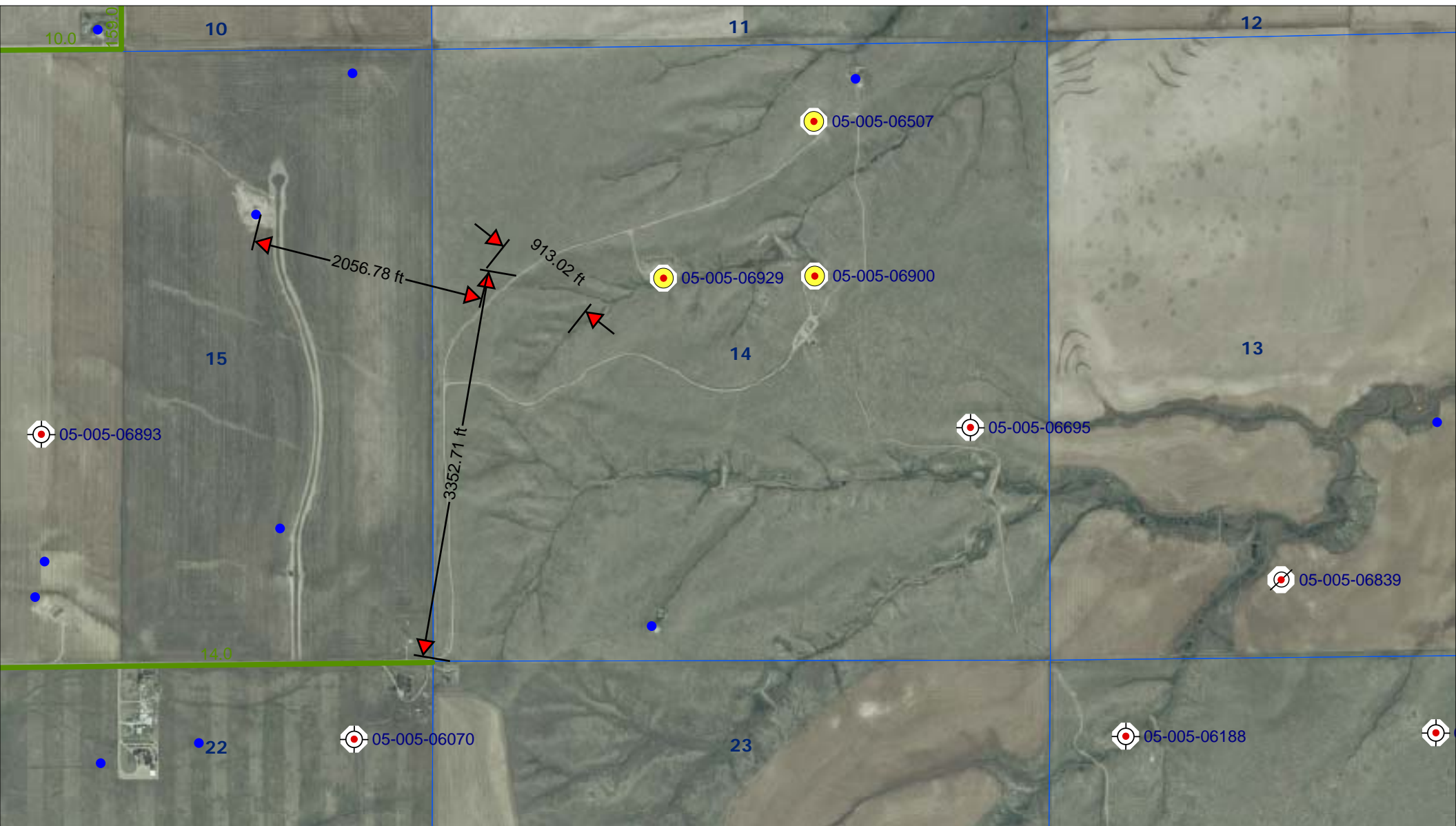
Dave

**David A. Kubeczko, PG**  
**Oil and Gas Location Assessment Specialist**

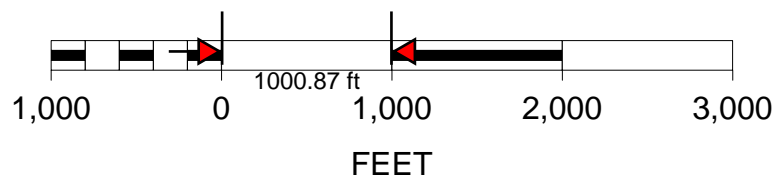
Colorado Oil & Gas Conservation Commission  
Northwest Area Office  
707 Wapiti Court, Suite 204  
Rifle, CO 81650  
Phone: (970) 625-2497x5  
FAX: (970) 625-5682  
Cell: (970) 309-2514  
[dave.kubeczko@state.co.us](mailto:dave.kubeczko@state.co.us)



 *Please consider the environment before printing this e-mail*



SCALE 1 : 27,064



State #5-14 well location

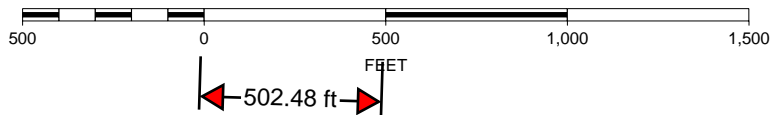
Township 4 South, Range 62 West

Arapahoe County, Colorado





SCALE 1 : 5,084



K. P. Kauffman Company, Inc.

Well location; building distance

State #5-14

SWNW section 14-T4S-R62W

Arapahoe Co., Colorado

