

Kubeczko, Dave

From: Kubeczko, Dave
Sent: Monday, November 30, 2009 12:45 PM
To: Kubeczko, Dave
Subject: FW: K P Kauffman Company State 11-14, NESW Sec 14 T4S R62W, Arapahoe County, Form 2A #1692822 Review
Attachments: siting State 11-14 wells_sec 14-4S-62W_distance to road.pdf

Scan No 2032663.1 CORRESPONDENCE Form 2A#1692822

From: Sherry Glass [mailto:SGlass@kpk.com]
Sent: Monday, November 23, 2009 3:31 PM
To: Kubeczko, Dave
Subject: RE: K P Kauffman Company State 11-14, NESW Sec 14 T4S R62W, Arapahoe County, Form 2A #1692822 Review

Correction to previous measurements last email:

closest building is 4852', sorry.

From: Kubeczko, Dave [mailto:Dave.Kubeczko@state.co.us]
Sent: Monday, November 23, 2009 1:58 PM
To: Sherry Glass
Subject: K P Kauffman Company State 11-14, NESW Sec 14 T4S R62W, Arapahoe County, Form 2A #1692822 Review

Sherry,

I have been reviewing the K P Kauffman State 11-14 **Form 2A** (#1692822). COGCC requests the following clarifications regarding the data K P Kauffman has submitted on or attached to the Form 2A prior to passing the Oil and Gas Location Assessment.

1. **Cultural (Section 9):** The Form 2A indicates distances to nearest building of 5280 feet and the nearest above ground utility of 5280 feet. During COGCC's review of the 2005 aerial photograph, the distance to the nearest building was 3963 feet, but I couldn't verify the distance to the nearest above ground utility. Could you let me know where and how the nearest above ground utility was located. I can make the changes if you send an email with this request.
2. **Water Resources (Section 14):** Form 2A indicates that the distance to the nearest surface water is 364 feet. COGCC guidelines require designating all locations with close proximity to surface water (i.e., less than 500 feet) a **sensitive area** and requiring the following conditions of approval (COAs):
 - COA 4** - Location is in a sensitive area because of close proximity to surface water, therefore, operator must ensure 110 percent secondary containment for any volume of fluids contained at well site during drilling and completion operations.
 - COA 5** - Operator must implement best management practices to contain any unintentional release of fluids.

COGCC requires your written acknowledgement of these COAs prior to passing the OGLA review. If you have any questions, please do not hesitate to call me at (970) 625-2497 x5 (office) or (970) 309-2514 (cell), or email. Thanks.

Dave

David A. Kubeczko, PG

Oil and Gas Location Assessment Specialist

Colorado Oil & Gas Conservation Commission

Northwest Area Office

707 Wapiti Court, Suite 204

Rifle, CO 81650

Phone: (970) 625-2497x5

FAX: (970) 625-5682

Cell: (970) 309-2514

dave.kubeczko@state.co.us



 *Please consider the environment before printing this e-mail*

Kubeczko, Dave

From: Sherry Glass [SGlass@kpk.com]
Sent: Monday, November 23, 2009 3:25 PM
To: Kubeczko, Dave
Subject: RE: K P Kauffman Company State 11-14, NESW Sec 14 T4S R62W, Arapahoe County, Form 2A #1692822 Review
Attachments: siting State 11-14 wells_sec 14-4S-62W_distance to road.pdf

I acknowledge the conditions of approval for this permit location based on the intermittent stream/surface waters at 364' from the location.

The nearest building distance is 5650' and the nearest utility is 2844' (near road to SW). Please see attached. Thanks.

From: Kubeczko, Dave [mailto:Dave.Kubeczko@state.co.us]
Sent: Monday, November 23, 2009 1:58 PM
To: Sherry Glass
Subject: K P Kauffman Company State 11-14, NESW Sec 14 T4S R62W, Arapahoe County, Form 2A #1692822 Review

Sherry,

I have been reviewing the K P Kauffman State 11-14 **Form 2A** (#1692822). COGCC requests the following clarifications regarding the data K P Kauffman has submitted on or attached to the Form 2A prior to passing the Oil and Gas Location Assessment.

1. **Cultural (Section 9):** The Form 2A indicates distances to nearest building of 5280 feet and the nearest above ground utility of 5280 feet. During COGCC's review of the 2005 aerial photograph, the distance to the nearest building was 3963 feet, but I couldn't verify the distance to the nearest above ground utility. Could you let me know where and how the nearest above ground utility was located. I can make the changes if you send an email with this request.
2. **Water Resources (Section 14):** Form 2A indicates that the distance to the nearest surface water is 364 feet. COGCC guidelines require designating all locations with close proximity to surface water (i.e., less than 500 feet) a **sensitive area** and requiring the following conditions of approval (COAs):
 - COA 4** - Location is in a sensitive area because of close proximity to surface water, therefore, operator must ensure 110 percent secondary containment for any volume of fluids contained at well site during drilling and completion operations.
 - COA 5** - Operator must implement best management practices to contain any unintentional release of fluids.

COGCC requires your written acknowledgement of these COAs prior to passing the OGLA review. If you have any questions, please do not hesitate to call me at (970) 625-2497 x5 (office) or (970) 309-2514 (cell), or email. Thanks.

Dave

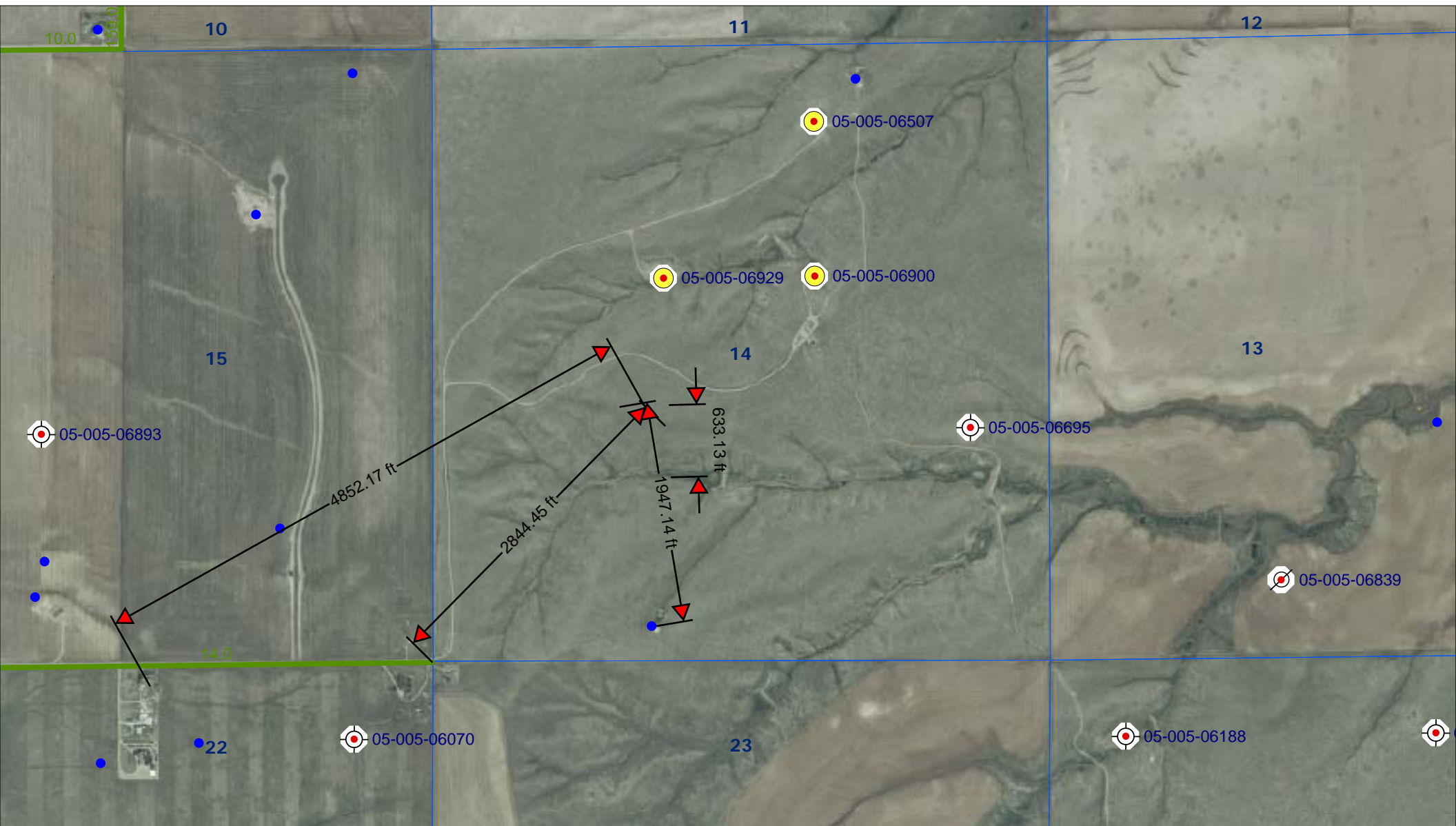
David A. Kubeczko, PG
Oil and Gas Location Assessment Specialist

Colorado Oil & Gas Conservation Commission
Northwest Area Office
707 Wapiti Court, Suite 204
Rifle, CO 81650
Phone: (970) 625-2497x5

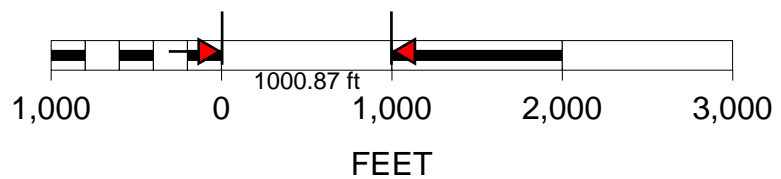
FAX: (970) 625-5682
Cell: (970) 309-2514
dave.kubeczko@state.co.us



 *Please consider the environment before printing this e-mail*



SCALE 1 : 27,064



State #11-14 well location

Township 4 South, Range 62 West

Arapahoe County, Colorado

