

Mott Well plan

Mott Well plan

DALEY LAND SURVEYING, INC.

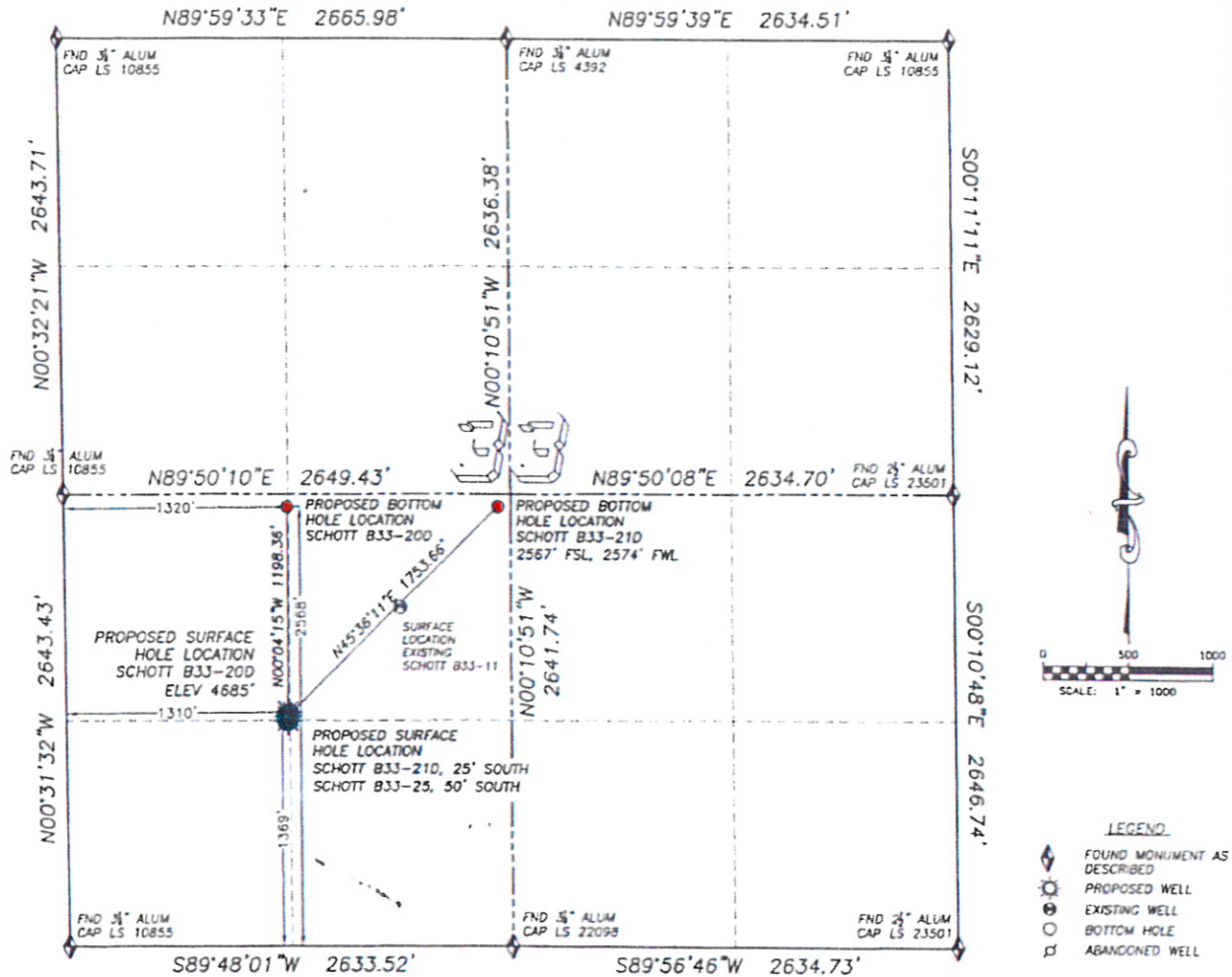
PARKER, CO. 80134

303 953 9841

DIRECTIONAL LAYOUT

SCHOTT B33-20D, SCHOTT B33-21D, SCHOTT B33-25

SECTION 33, TOWNSHIP 5 NORTH, RANGE 64 WEST OF THE 6TH PRINCIPLE MERIDIAN



NAD 83 LATITUDE AND LONGITUDE

SCHOTT B33-20D SURFACE HOLE:

LATITUDE: N40.35229°
 LONGITUDE: W104.55938°
 ELEVATION: 4685'
 PDOP 1.9
 1369' FSL, 1310' FWL

BOTTOM HOLE:

LATITUDE: N40.35558°
 LONGITUDE: W104.55938°
 2568' FSL, 1320' FWL

NAD 83 LATITUDE AND LONGITUDE

SCHOTT B33-21D SURFACE HOLE:

LATITUDE: N40.35222°
 LONGITUDE: W104.55938°
 ELEVATION: 4685'
 PDOP 1.8
 1344' FSL, 1310' FWL

BOTTOM HOLE:

LATITUDE: N40.35559°
 LONGITUDE: W104.55489°
 2567' FSL, 2574' FWL

NAD 83 LATITUDE AND LONGITUDE

SCHOTT B33-25 SURFACE HOLE:

LATITUDE: N40.35216°
 LONGITUDE: W104.55938°
 ELEVATION: 4685'
 PDOP 2.2
 1319' FSL, 1309' FWL

NOTES:

1) THERE IS A 25' SPACING BETWEEN SCHOTT B33-20D, SCHOTT B33-21D AND SCHOTT B33-25 PROPOSED SURFACE HOLE LOCATIONS.