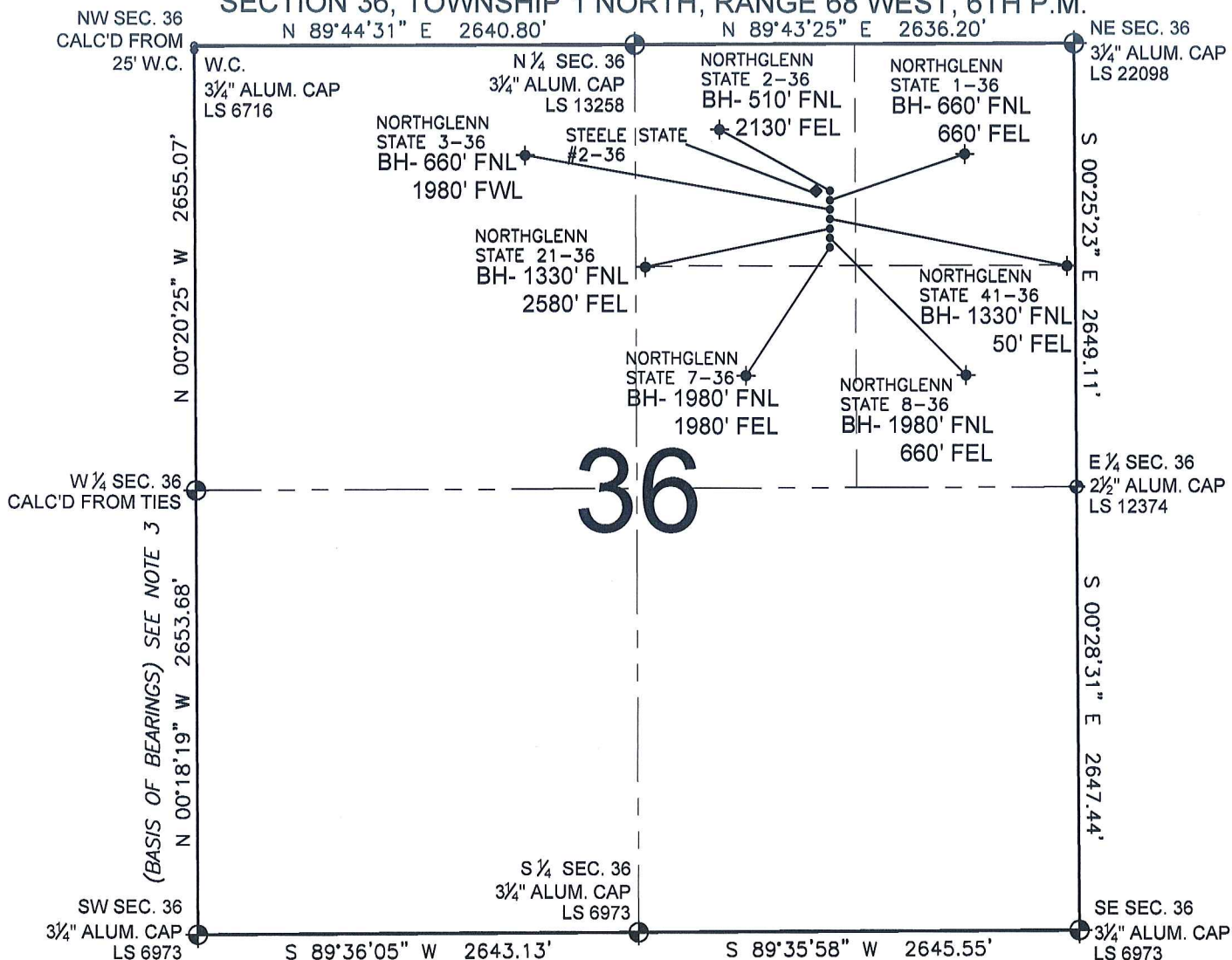


PAD DRAWING - NORTHGLENN STATE 7 PAD

SECTION 36, TOWNSHIP 1 NORTH, RANGE 68 WEST, 6TH P.M.



LEGEND

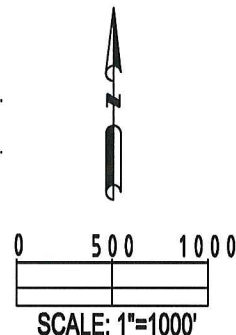
- = EXISTING MONUMENT
 = BOTTOM HOLE
 BH= BOTTOM HOLE
 = PROPOSED WELL
 = EXISTING WELL


NOTES:

- THIS SURVEY WAS DONE BY GPS METHODS AND CONFORMS TO THE MINIMUM STANDARDS SET BY THE C.O.G.C.C., RULE NO. 215
- ELEVATIONS SHOWN AT THE WELL HEAD, AS WELL AS HORIZONTAL CONTROL, ARE BASED ON GPS-RTK VALUES DERIVED FROM DOING 2-HOUR STATIC GPS SESSIONS AND REDUCTIONS USING O.P.U.S. SOLUTIONS.
VERTICAL = NAVD88; HORIZONTAL = NAD83/92
- THE BEARINGS SHOWN HEREON ARE BASED ON GPS OBSERVATIONS BETWEEN THE MONUMENTS SHOWN HEREON AS FOUND ON THE FIELD DATE BELOW.
- DISTANCES SHOWN ARE AT GROUND LEVEL, AS MEASURED IN THE FIELD, WITH TIES TO WELLS MEASURED AT A PERPENDICULAR TO SECTION LINES.

NOTES:

- STEELE STATE #2-36 IS 1121' FNL, 1521' FEL.
 NORTHGLENN STATE 2-36 TO BE AT 1121' FNL, 1473' FEL.
 BOTTOM HOLE AT 510' FNL & 2130' FEL.
 NORTHGLENN STATE 1-36 TO BE AT 1137' FNL, 1473' FEL.
 BOTTOM HOLE AT 660' FNL & 660' FEL.
 NORTHGLENN STATE 3-36 TO BE AT 1153' FNL, 1473' FEL.
 BOTTOM HOLE AT 660' FNL & 1980' FWL.
 NORTHGLENN STATE 41-36 TO BE AT 1169' FNL, 1473' FEL.
 BOTTOM HOLE AT 1330' FNL & 50' FEL.
 NORTHGLENN STATE 21-36 TO BE AT 1185' FNL, 1473' FEL.
 BOTTOM HOLE AT 1330' FNL & 2580' FEL.
 NORTHGLENN STATE 8-36 TO BE AT 1201' FNL, 1473' FEL.
 BOTTOM HOLE AT 1980' FNL & 660' FEL.
 NORTHGLENN STATE 7-36 TO BE AT 1217' FNL, 1473' FEL.
 BOTTOM HOLE AT 1980' FNL & 1980' FEL.



REVISIONS		PREPARED BY:  PFS llc Petroleum Field Services, LLC 1801 W. 13th Ave. Denver, CO 80204	KERR-MCGEE OIL & GAS ONSHORE LP		SCALE: 1"=1000'	
INITIAL	DATE		FIELD DATE: 09-24-09	PAD NAME: NORTHGLENN STATE 7 PAD		
SMF	10-02-09					
SMF	10-05-09		DRAWING DATE: 09-28-09	SURFACE LOCATION: WELD COUNTY, COLORADO NW 1/4 NE 1/4, SEC. 36, T1N, R68W		
		BY: SMF				