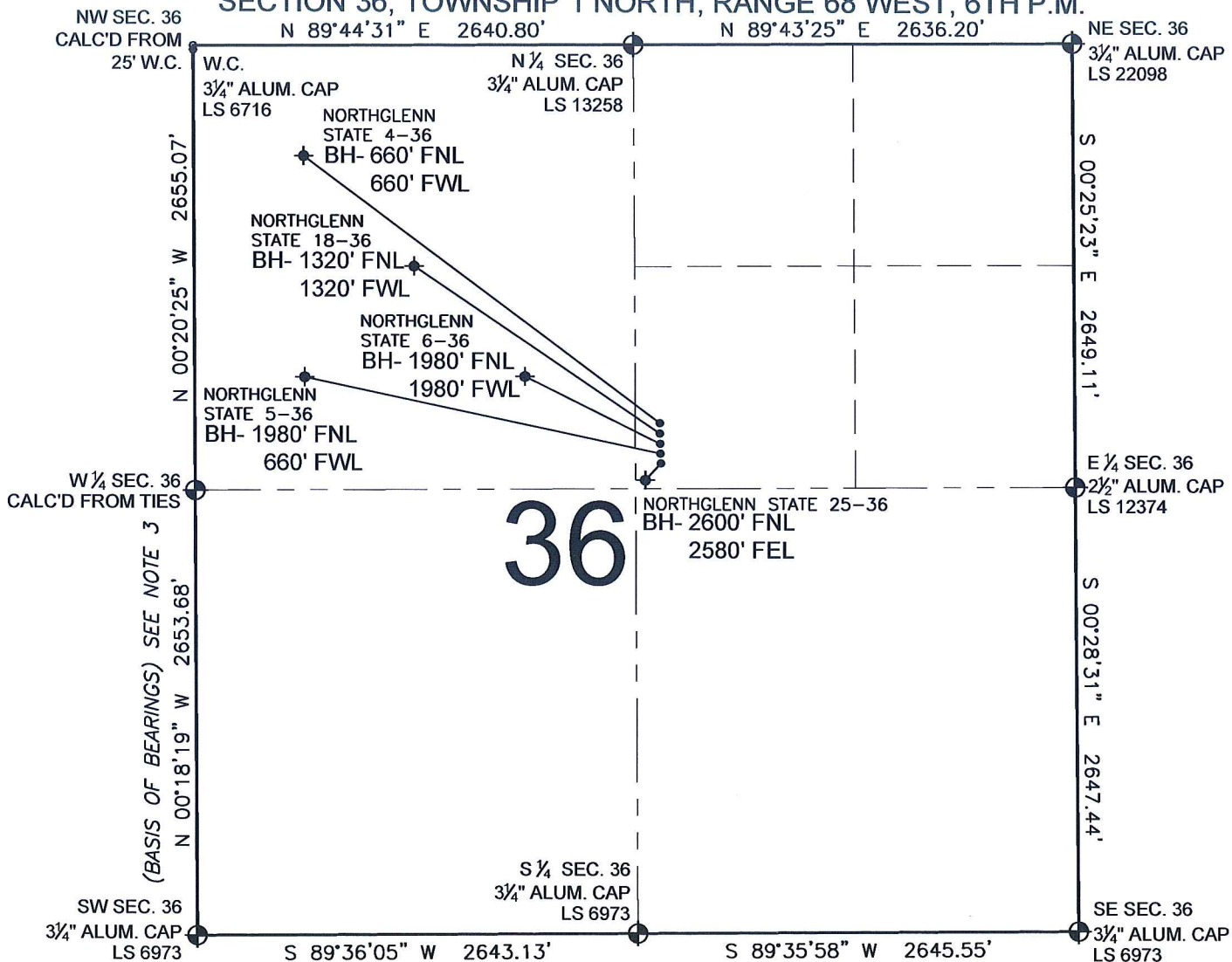


# PAD DRAWING - NORTHGLENN STATE 5 PAD

SECTION 36, TOWNSHIP 1 NORTH, RANGE 68 WEST, 6TH P.M.



## LEGEND

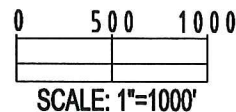
- = EXISTING MONUMENT
- ◆ = BOTTOM HOLE
- BH= BOTTOM HOLE
- = PROPOSED WELL
- ◆ = EXISTING WELL


## NOTES:

- THIS SURVEY WAS DONE BY GPS METHODS AND CONFORMS TO THE MINIMUM STANDARDS SET BY THE C.O.G.C.C., RULE NO. 215
- ELEVATIONS SHOWN AT THE WELL HEAD, AS WELL AS HORIZONTAL CONTROL, ARE BASED ON GPS-RTK VALUES DERIVED FROM DOING 2-HOUR STATIC GPS SESSIONS AND REDUCTIONS USING O.P.U.S. SOLUTIONS.  
VERTICAL = NAVD88; HORIZONTAL = NAD83/92
- THE BEARINGS SHOWN HEREON ARE BASED ON GPS OBSERVATIONS BETWEEN THE MONUMENTS SHOWN HEREON AS FOUND ON THE FIELD DATE BELOW.
- DISTANCES SHOWN ARE AT GROUND LEVEL, AS MEASURED IN THE FIELD, WITH TIES TO WELLS MEASURED AT A PERPENDICULAR TO SECTION LINES.

## NOTES:

- NORTHGLENN STATE 4-36 TO BE AT 2436' FNL, 2488' FEL.
- BOTTOM HOLE AT 660' FNL & 660' FWL.
- NORTHGLENN STATE 18-36 TO BE AT 2452' FNL, 2488' FEL.
- BOTTOM HOLE AT 1320' FNL & 1320' FWL.
- NORTHGLENN STATE 6-36 TO BE AT 2468' FNL, 2488' FEL.
- BOTTOM HOLE AT 1980' FNL & 1980' FWL.
- NORTHGLENN STATE 5-36 TO BE AT 2484' FNL, 2488' FEL.
- BOTTOM HOLE AT 1980' FNL & 660' FWL.
- NORTHGLENN STATE 25-36 TO BE AT 2500' FNL, 2488' FEL.
- BOTTOM HOLE AT 2600' FNL & 2580' FEL.



REVISIONS		PREPARED BY:   <b>PFS</b> Petroleum Field Services, LLC 1801 W. 13th Ave. Denver, CO 80204
INITIAL	DATE	

KERR-MCGEE OIL & GAS ONSHORE LP

FIELD DATE:  
09-24-09

PAD NAME:  
NORTHGLENN STATE 5 PAD

DRAWING DATE:  
09-28-09

SURFACE LOCATION:

BY:  
SMF

WELD COUNTY, COLORADO  
SW 1/4 NE 1/4, SEC. 36, T1N, R68W