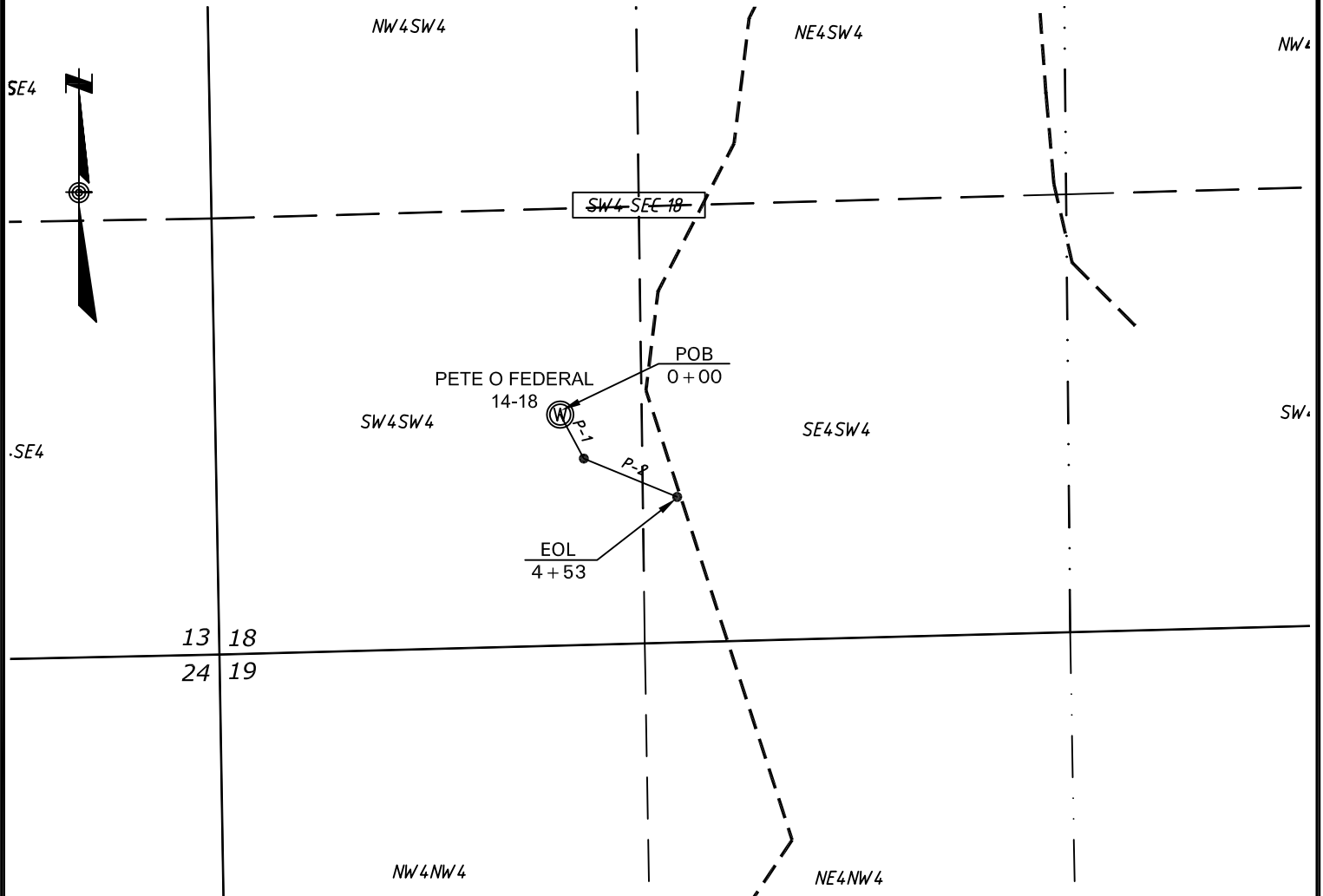


# PROPOSED R.O.W. for Pete O Federal 14-18



## LEGEND:

- ⊙ = WELL LOCATION
- = PROPOSED R.O.W.
- - - = EXISTING R.O.W.
- = SECTION LINES
- = CALCULATED SECTION LINES
- = CALCULATED 1/4 SECTION LINES
- = CALCULATED 1/16 SECTION LINES

ROW Table

Sec - Township - Range	1/4 Section	Width	Feet	Rods	Miles	Acres
18 - T33S - R65W	SW4SW4	60	340	20.6	0.06	0.47
18 - T33S - R65W	SE4SW4	60	113	6.8	0.02	0.16
TOTAL			453	27.5	0.09	0.62

PETE O FEDERAL LINE TABLE

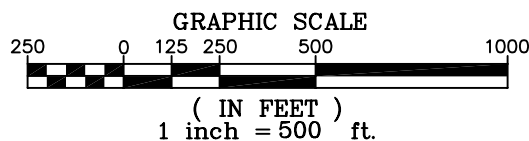
LINE	BEARING	LENGTH
P-1	S28°13'00"E	150
P-2	S67°38'24"E	303
Total		453

## NOTICE:

SOME INFORMATION SHOWN HEREON IS BASED ON INFORMATION TAKEN FROM RECORD INFORMATION, PREVIOUS SURVEYS, PLATS AND SURVEYS BY OTHER SURVEYORS, OR COLLATORAL EVIDENCE AND MAY NOT REFLECT THAT WHICH MAY BE DISCLOSED BY A COMPLETE BOUNDARY SURVEY. **THIS SKETCH IS NOT TO BE RELIED UPON FOR THE ESTABLISHMENT OF SURFACE BOUNDARIES, FENCES, BUILDINGS OR OTHER FUTURE IMPROVEMENTS.**

*Lee Shields*  
Lee Shields, CO PLS #37960

Date Platted February 09, 2007



Pioneer Natural Resources USA, Inc.  
PROPOSED ROW LOCATION

for  
Pete O Federal 14-18  
Sec 18, T33S, R65W 6th P.M.  
Las Animas County, Colorado

**SHIELDS SURVEY L<sup>td</sup>. C<sup>o</sup>.**  
Raton, New Mexico 87740  
(505)445-1232