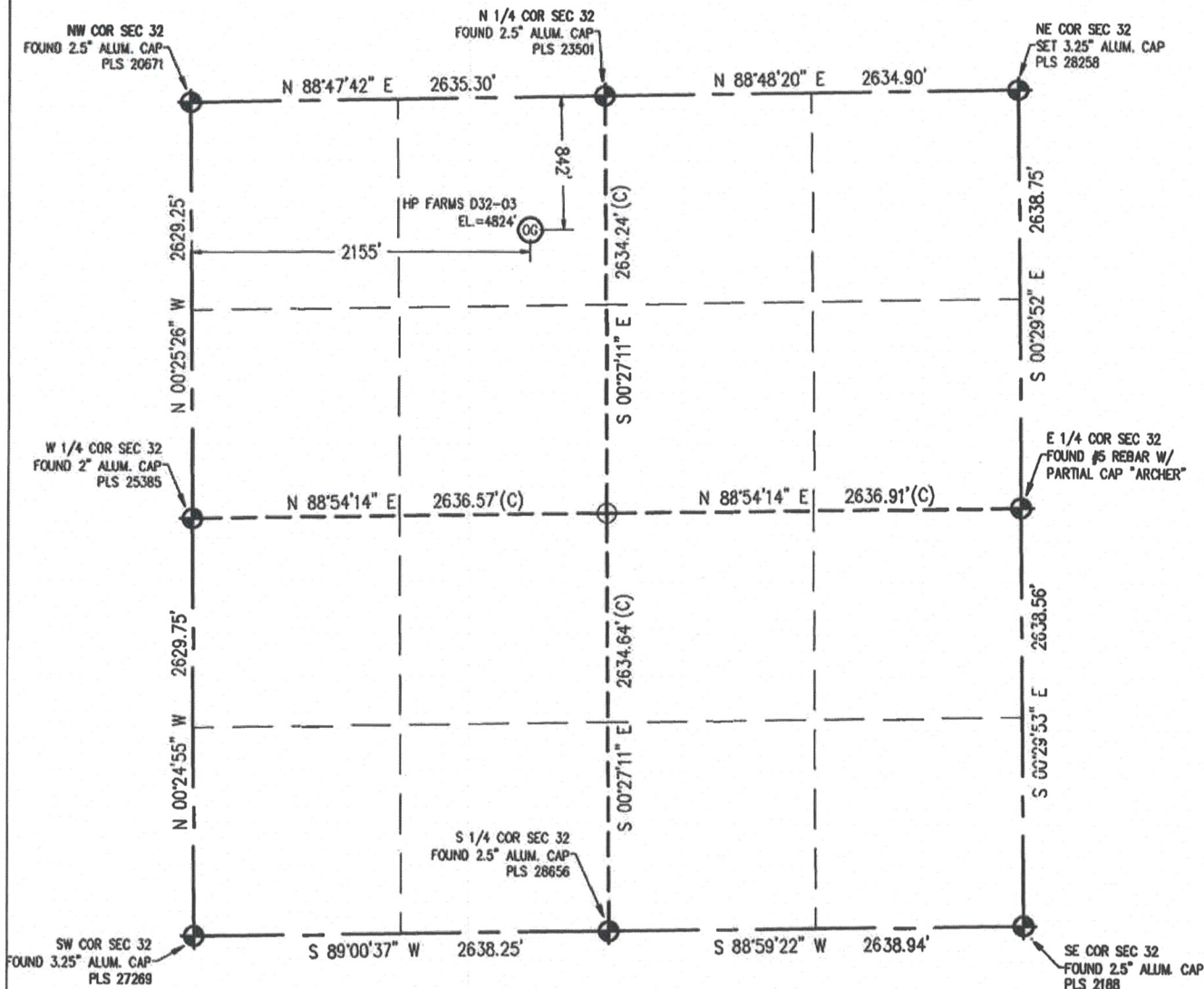


Baseline Engineering Corp. 710 11th Avenue Suite 105 Greeley, Colorado 80631

# WELL LOCATION CERTIFICATE

THIS MAP DOES NOT REPRESENT A BOUNDARY SURVEY

SECTION 32  
TOWNSHIP 3 NORTH  
RANGE 64 WEST



IN ACCORDANCE WITH A REQUEST FROM ERIK VAN DECAR - NOBLE ENERGY INC, BASELINE ENGINEERING CORP. HAS DETERMINED THE LOCATION OF THE HP FARMS D32-03 TO BE 2155' FWL, 842' FNL, AS MEASURED AT NINETY (90) DEGREES FROM THE SECTION LINE OF SECTION 32, TOWNSHIP 3 NORTH, RANGE 64 WEST, 6TH PRINCIPAL MERIDIAN, WELD COUNTY COLORADO.

I HEREBY CERTIFY THAT THIS WELL LOCATION CERTIFICATE WAS PREPARED BY ME, OR UNDER MY DIRECT SUPERVISION, THAT THE FIELD WORK WAS COMPLETED ON 05/07/2009, THAT IT IS NOT A LAND SURVEY PLAT OR AN IMPROVEMENT SURVEY PLAT, AND THAT IT IS NOT TO BE RELIED UPON FOR ESTABLISHMENT OF FENCE, BUILDING, OR OTHER FUTURE IMPROVEMENT LINES.

Scale 1" = 1000 ft

LATITUDE & LONGITUDE (NAD 83 SURFACE HOLE):  
LATITUDE: N 40.186650  
LONGITUDE: W 104.576904  
PDOP: 1.8  
1/4, 1/4: NE1/4NW1/4  
NEAREST PROPERTY LINE: 86' E

## NOTES:

- 1) LAT/LONG SHOWN ARE BASED ON A GPS OBSERVATION (NAD83).
- 2) BEARINGS SHOWN ARE GRID BEARINGS OF THE COLORADO STATE PLANE COORDINATE SYSTEM, NORTH ZONE, NORTH AMERICAN DATUM 1983/2007.
- 3) GROUND ELEVATIONS ARE BASED ON A GPS OBSERVATION (NAVD 88 DATUM).
- 4) ALL DISTANCES SHOWN ARE FIELD MEASURED UNLESS OTHERWISE NOTED.
- 5) THE NEAREST EXISTING WELL IS: NORRIS D32-2J 709' SOUTHWEST.
- 6) IMPROVEMENTS: SEE VISIBLE IMPROVEMENTS EXHIBIT FOR ALL VISIBLE IMPROVEMENTS WITHIN 400' OF WELL HEAD.
- 7) SURFACE USE: PASTURE.

NOTICE: According to Colorado law you MUST commence any legal action based upon any defect in this W.L.C. within three years after you first discover such defect. In no event may any action based upon any defect in this W.L.C. be commenced more than ten years from this said date of the certification show hereon.

## LEGEND

- FOUND/SET SURVEY MONUMENT PER MONUMENT RECORD EXCEPTIONS NOTED.
- CALCULATED SURVEY MONUMENT POSITION
- (C) - CALCULATED DIMENSION



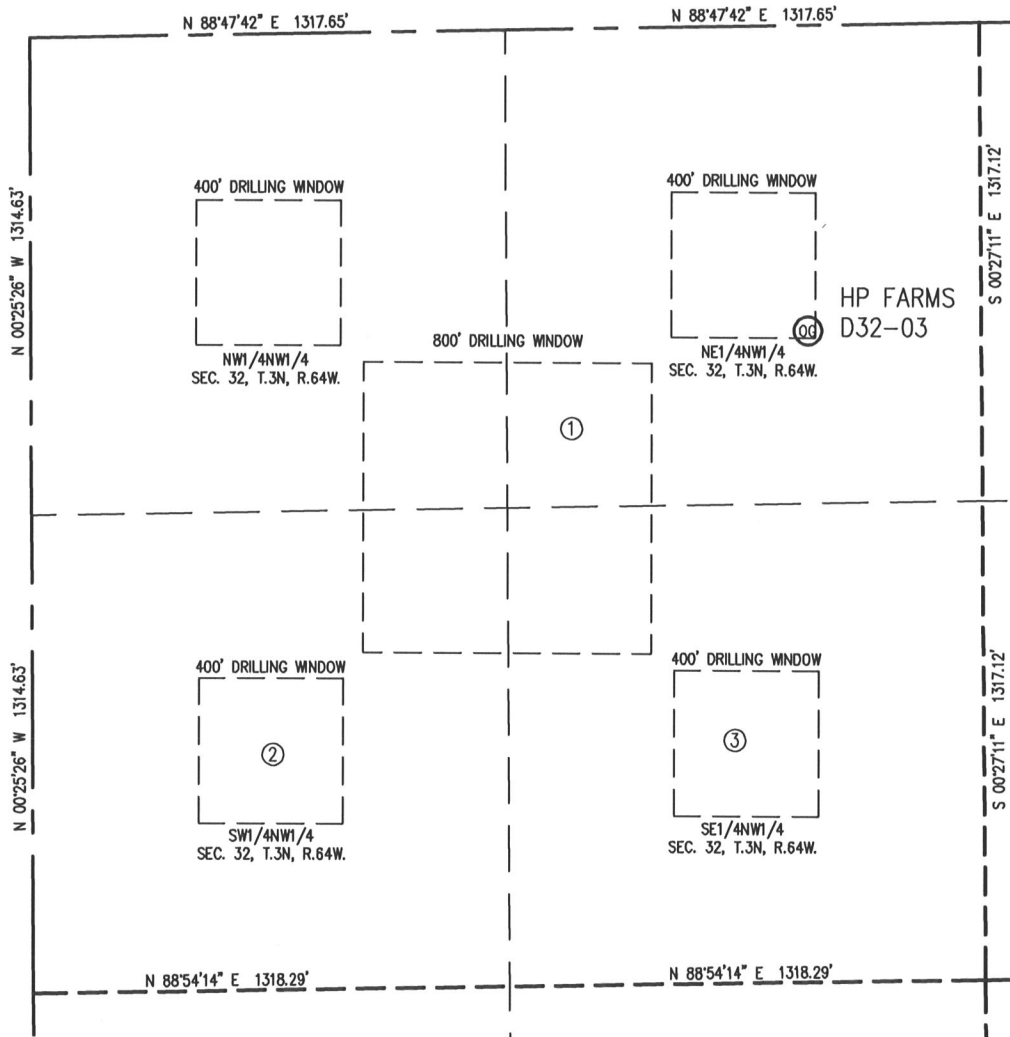
John C. Barickman  
Professional Land Surveyor Registration No. 28258  
State of Colorado  
FOR AND ON BEHALF OF BASELINE ENGINEERING CORP.

Completed  
05/12/2009

JOB #: NOB3N64W32-01

# SITE SKETCH

sec 32  
T 31V"  
R 64W



①	②	③
NORRIS D 32-2J	NORRIS D 32-5	NORRIS D 32-6
NE/NW	SW/NW	SE/NW
1499' FWL	665' FWL	1946' FWL
1100' FNL	1983' FNL	1965' FNL
EL 4827'	EL 4823'	EL 4834'
N 40.185923°	N 40.183475°	N 40.183562°
W 104.579257°	W 104.582248°	W 104.577664°
PDOP: 2.2	PDOP: 1.6	PDOP: 1.9

## NOTES:

- THIS SKETCH DOES NOT REPRESENT A BOUNDARY SURVEY.
- THE DATUM FOR THE LATITUDES AND LONGITUDES ON THIS SKETCH IS NAD83.



0 500  
Scale 1" = 500 ft