



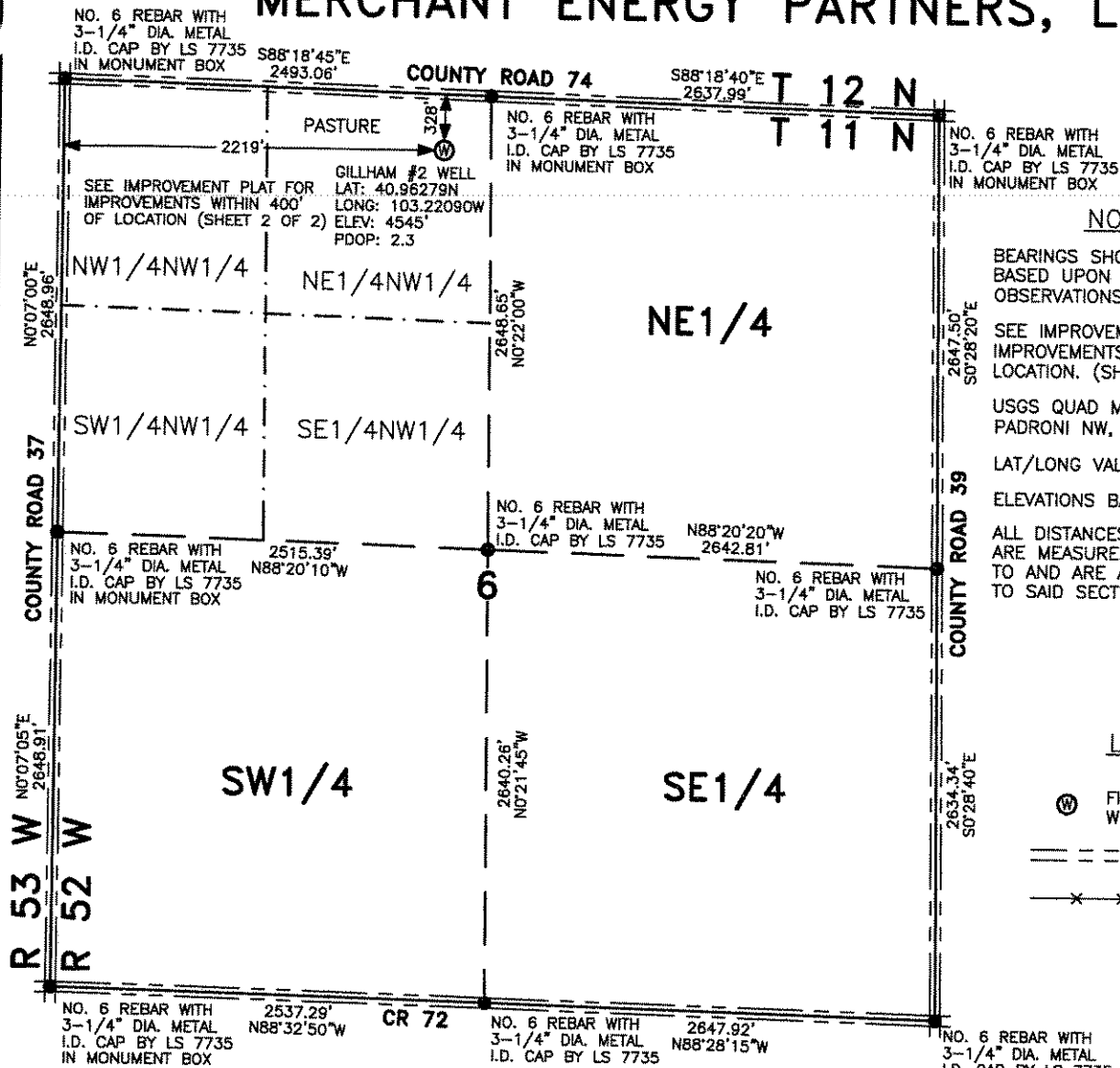
01760007

WELL LOCATION FOR MERCHANT ENERGY PARTNERS, LLC

RECEIVED

NOV 13 2009

COGCC



NOTES

BEARINGS SHOWN HEREON ARE BASED UPON RTK GPS OBSERVATIONS

SEE IMPROVEMENT PLAT FOR IMPROVEMENTS WITHIN 400' OF LOCATION. (SHEET 2)

USGS QUAD MAP: PADRONI NW, COLO.

LAT/LONG VALUES ARE NAD83

ELEVATIONS BASED ON NAVD 1988

ALL DISTANCES TO SECTION LINES ARE MEASURED PERPENDICULAR TO AND ARE AT RIGHT ANGLES TO SAID SECTION LINES.

LEGEND

⊙ FIELD SURVEYED WELL LOCATION

== == == ROAD

-x-x- FENCE

THIS WELL LOCATION PLAT HAS BEEN PREPARED FOR MERCHANT ENERGY PARTNERS, LLC, TO LOCATE THE GILLHAM #2 WELL BEING 2219 FEET FROM THE WEST LINE AND 328 FEET FROM THE NORTH LINE IN THE NE1/4NW1/4 OF SECTION 6, TOWNSHIP 11 NORTH, RANGE 52 WEST OF THE 6TH P.M., LOGAN COUNTY, COLORADO. THE SURFACE ELEVATION AT THIS POINT IS 4545 FEET. THIS IS NOT A LAND SURVEY PLAT.



SCALE: 1" = 1000'

1000 500 0 1000

SCALE IN FEET

LEIBERT-McATEE & ASSOCIATES, INC.

P.O. BOX 442 615 SOUTH TENTH AVENUE
STERLING, CO 80751 970-522-1960

FIELD DATE: 11-7-09

DWG DATE: 11-9-09

GPS OPERATOR:
TIM LEIBERT

GILLHAM #2

DWG NO. 1502-09

SHEET 1 OF 2