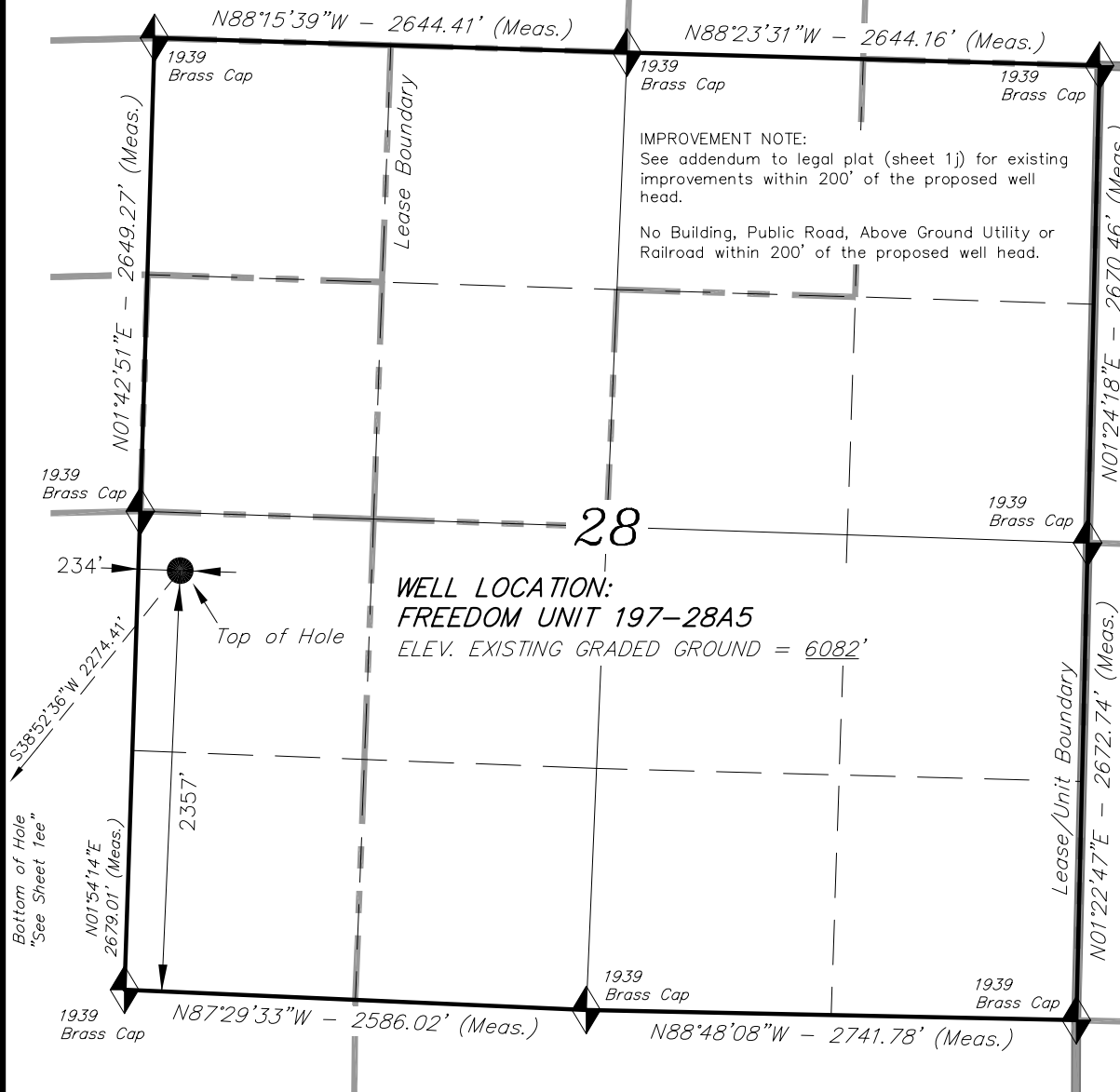


**T1S, R97W, 6th P.M.**

**EXXON MOBIL CORPORATION**

WELL LOCATION, FREEDOM UNIT 197-28A5,  
LOCATED AS SHOWN IN THE NW 1/4 SW 1/4  
OF SECTION 28, T1S, R97W, 6th P.M. RIO  
BLANCO COUNTY, COLORADO.



**BASIS OF BEARINGS & BASIS OF ELEVATION**

BASIS OF BEARINGS IS A LINE BETWEEN MAGNOLIA & MEYERS TRIANGULATION STATION GRID COORDINATES WHICH IS ASSUMED TO BEAR S82°36'07"E.

BASIS OF ELEVATIONS IS MAGNOLIA TRIANGULATION STATION LOCATED IN THE NW 1/4 OF SECTION 9, T2S, R96W, 6th P.M. REPORTED FROM THE NATIONAL GEODETIC SURVEY AS BEING 7529 FEET (NAVD 88). WE MEASURED IT TO BE 7526.2'

**NOTES:**

1. Well footages are measured at right angles to the Section Lines.
2. Bearings are based on Global Positioning Satellite observations.
3. G.P.S. Operator: D. PETTY, (PDOP) = 3.1

THIS IS TO CERTIFY THAT THE ABOVE PLAT WAS PREPARED FROM FIELD NOTES OF ACTUAL SURVEYS MADE BY ME OR UNDER MY SUPERVISION, THE LOCATION HAS BEEN CHECKED ON THE GROUND AS SHOWN ON THE PLAT, AND THAT THE SAME ARE TRUE AND CORRECT TO THE BEST OF MY KNOWLEDGE AND BELIEF.

**Surveyor's Seal:**  
# 30125  
REGISTERED LAND SURVEYOR  
REGISTRATION NO. 30125  
STATE OF COLORADO

CO-NORTH NAD 83 (SURFACE LOCATION)	
LATITUDE = 39°56'04.02" (39.934449)	
LONGITUDE = 108°17'45.24" (108.295900)	
STATE PLANE COORDINATES	
N: = 1231327.466	E: = 2216095.719
CO-NORTH NAD 27 (SURFACE LOCATION)	
LATITUDE = 39°56'04.12" (39.934477)	
LONGITUDE = 108°17'42.92" (108.295256)	
STATE PLANE COORDINATES	
N: = 231328.236	E: = 1216255.735

FROM SURFACE LOCATION TO NEAREST:	
TOWN/COMMUNITY: 21.5 MILES NE TO MEEKER	
UNIT BOUNDARY: ±8257' NLY TO BOUNDARY	
UNIT BOUNDARY: ±5072' ELY TO BOUNDARY	
LEASE BOUNDARY: ±324' NLY TO BOUNDARY	
LEASE BOUNDARY: ±1070' ELY TO BOUNDARY	
EXISTING WELL: ±616' SELY TO P-1 MARATHON-FEE	

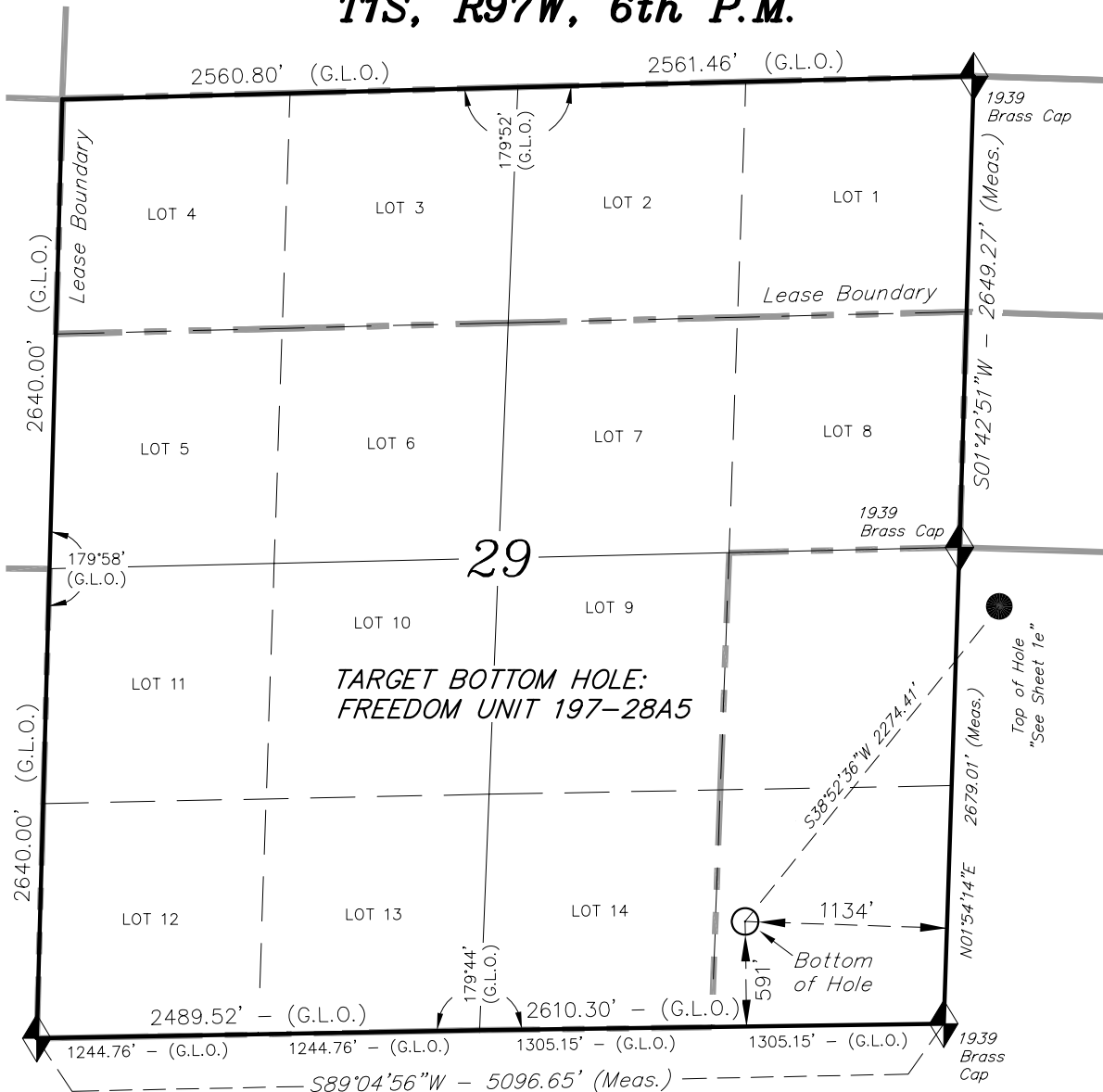
**TRI STATE LAND SURVEYING & CONSULTING**

180 NORTH VERNAL AVE. - VERNAL, UTAH 84078  
(435) 781-2501

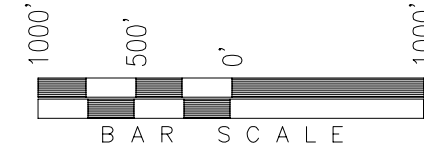
DATE SURVEYED: 02-20-09	SURVEYED BY: D.P.	SHEET 1e OF 8
DATE DRAWN: 10-08-09	DRAWN BY: F.T.M.	
REVISED:	SCALE: 1" = 1000'	

**T1S, R97W, 6th P.M.**

**Exxon Mobil Corporation**



TARGET BOTTOM HOLE, FREEDOM UNIT  
197-28A5, LOCATED AS SHOWN IN THE SE  
1/4 SE 1/4 OF SECTION 29, T1S, R97W, 6th  
P.M. RIO BLANCO COUNTY, COLORADO.



◆ = SECTION CORNERS LOCATED

**BASIS OF BEARINGS & BASIS OF ELEVATION**

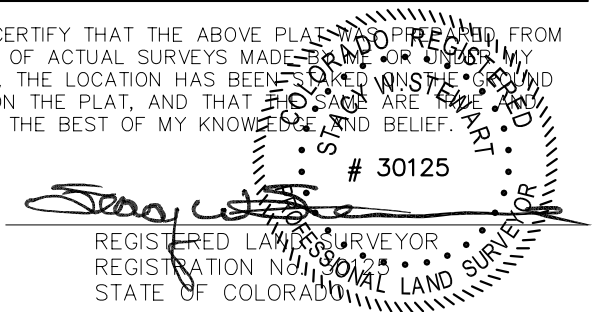
BASIS OF BEARINGS IS A LINE BETWEEN MAGNOLIA & MEYERS TRIANGULATION STATION GRID COORDINATES WHICH IS ASSUMED TO BEAR S82°36'07\"E.

BASIS OF ELEVATIONS IS MAGNOLIA TRIANGULATION STATION LOCATED IN THE NW 1/4 OF SECTION 9, T2S, R96W, 6th P.M. REPORTED FROM THE NATIONAL GEODETIC SURVEY AS BEING 7529 FEET (NAVD 88). WE MEASURED IT TO BE 7526.2'

**NOTES:**

1. Well footages are measured at right angles to the Section Lines.
2. Bearings are based on Global Positioning Satellite observations.

THIS IS TO CERTIFY THAT THE ABOVE PLAT WAS PREPARED FROM FIELD NOTES OF ACTUAL SURVEYS MADE BY ME OR UNDER MY SUPERVISION, THE LOCATION HAS BEEN CHECKED ON THE GROUND AS SHOWN ON THE PLAT, AND THAT THE SAME ARE TRUE AND CORRECT TO THE BEST OF MY KNOWLEDGE AND BELIEF.



CO-NORTH NAD 83 (BOTTOM HOLE)		FROM TARGET BOTTOM HOLE TO NEAREST:	
LATITUDE = 39°55'46.08\"		UNIT BOUNDARY: NLY ±9985' TO BOUNDARY	
LONGITUDE = 108°18'02.83\"		UNIT BOUNDARY: ELY ±6456' TO BOUNDARY	
STATE PLANE COORDINATES		LEASE BOUNDARY: NLY ±2074' TO BOUNDARY	
N: = 1229557.227	E: = 2214668.961	LEASE BOUNDARY: WLY ±167' TO BOUNDARY	
CO-NORTH NAD 27 (BOTTOM HOLE)			
LATITUDE = 39°55'46.18\"			
LONGITUDE = 108°18'00.51\"			
STATE PLANE COORDINATES			
N: = 229558.000	E: = 1214829.000		

**TRI STATE LAND SURVEYING & CONSULTING**

180 NORTH VERNAL AVE. - VERNAL, UTAH 84078  
(435) 781-2501

DATE SURVEYED: 02-20-09	SURVEYED BY: D.P.	SHEET 1ee OF 8
DATE DRAWN: 10-08-09	DRAWN BY: F.T.M.	
REVISED:	SCALE: 1" = 1000'	