

**LEGEND:**

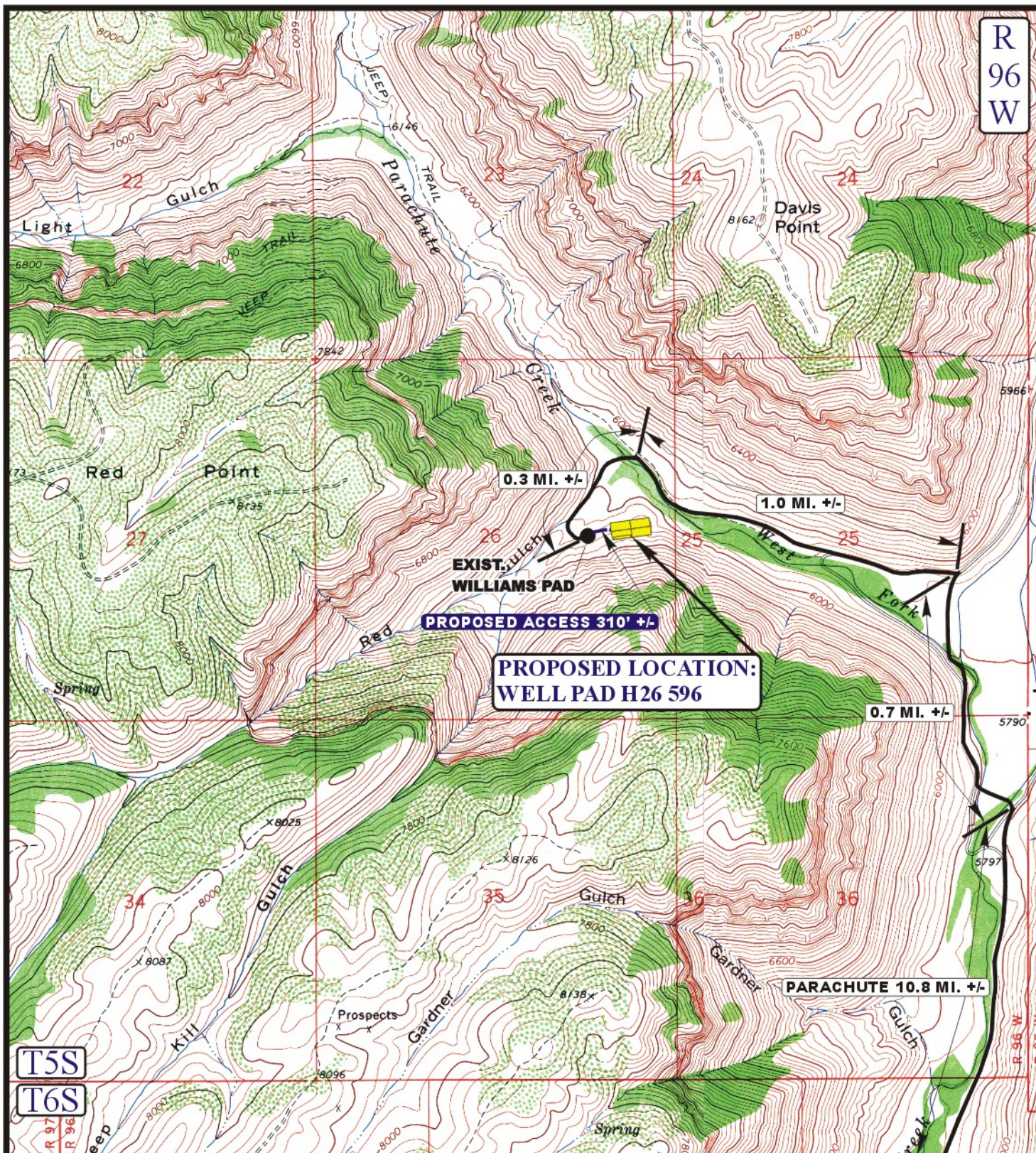
**EnCana OIL & GAS (USA) INC.**

## TOPOGRAPHIC MAP

SCALE: 1:100,000

**A**  
**TOPO**





LEGEND:

----- PROPOSED ACCESS ROAD  
 ===== EXISTING ROAD

EnCana OIL & GAS (USA) INC.

WELL PAD H26 596

SECTION 26, T5S, R96W, 6th P.M.  
 SE 1/4 NE 1/4



Uintah Engineering & Land Surveying  
 85 South 200 East Vernal, Utah 84078  
 (435) 789-1017 \* FAX (435) 789-1813



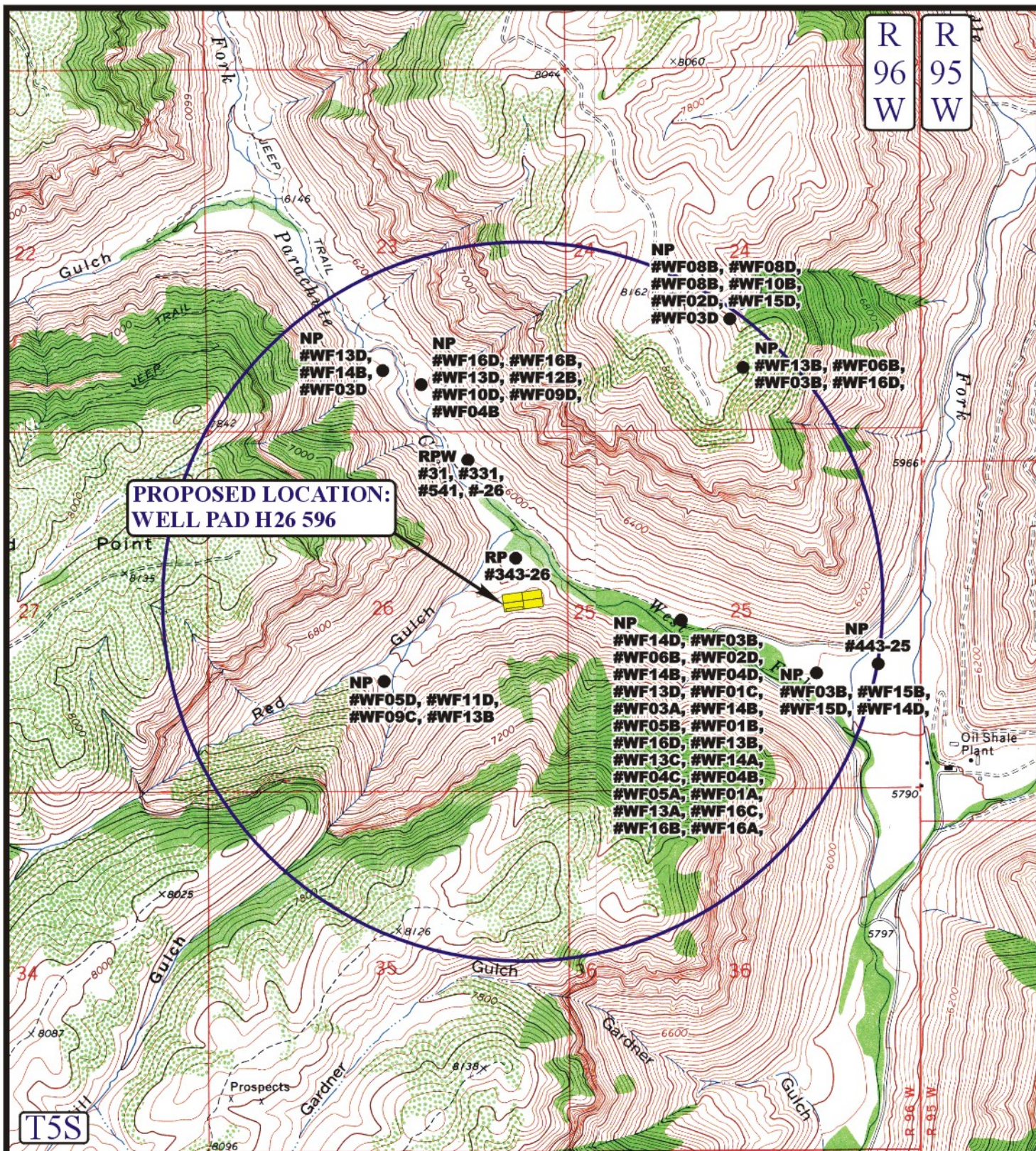
TOPOGRAPHIC  
 MAP

12 19 08  
 MONTH DAY YEAR

B  
 TOPO

SCALE: 1" = 2000' DRAWN BY: Z.L. REVISED: 00-00-00





# LEGEND:

- DISPOSAL WELLS
- PRODUCING WELLS
- SHUT IN WELLS
- WATER WELLS
- ABANDONED WELLS
- TEMPORARILY ABANDONED



Uintah Engineering & Land Surveying  
85 South 200 East Vernal, Utah 84078  
(435) 789-1017 \* FAX (435) 789-1813



EnCana OIL & GAS (USA) INC.

**WELL PAD H26 596**  
**SECTION 26, T5S, R96W, 6th P.M.**  
**SE 1/4 NE 1/4**

**TOPOGRAPHIC  
MAP**

**12 19 08**  
MONTH DAY YEAR

SCALE: 1" = 2000' DRAWN BY: Z.L. REVISED: 00-00-00

