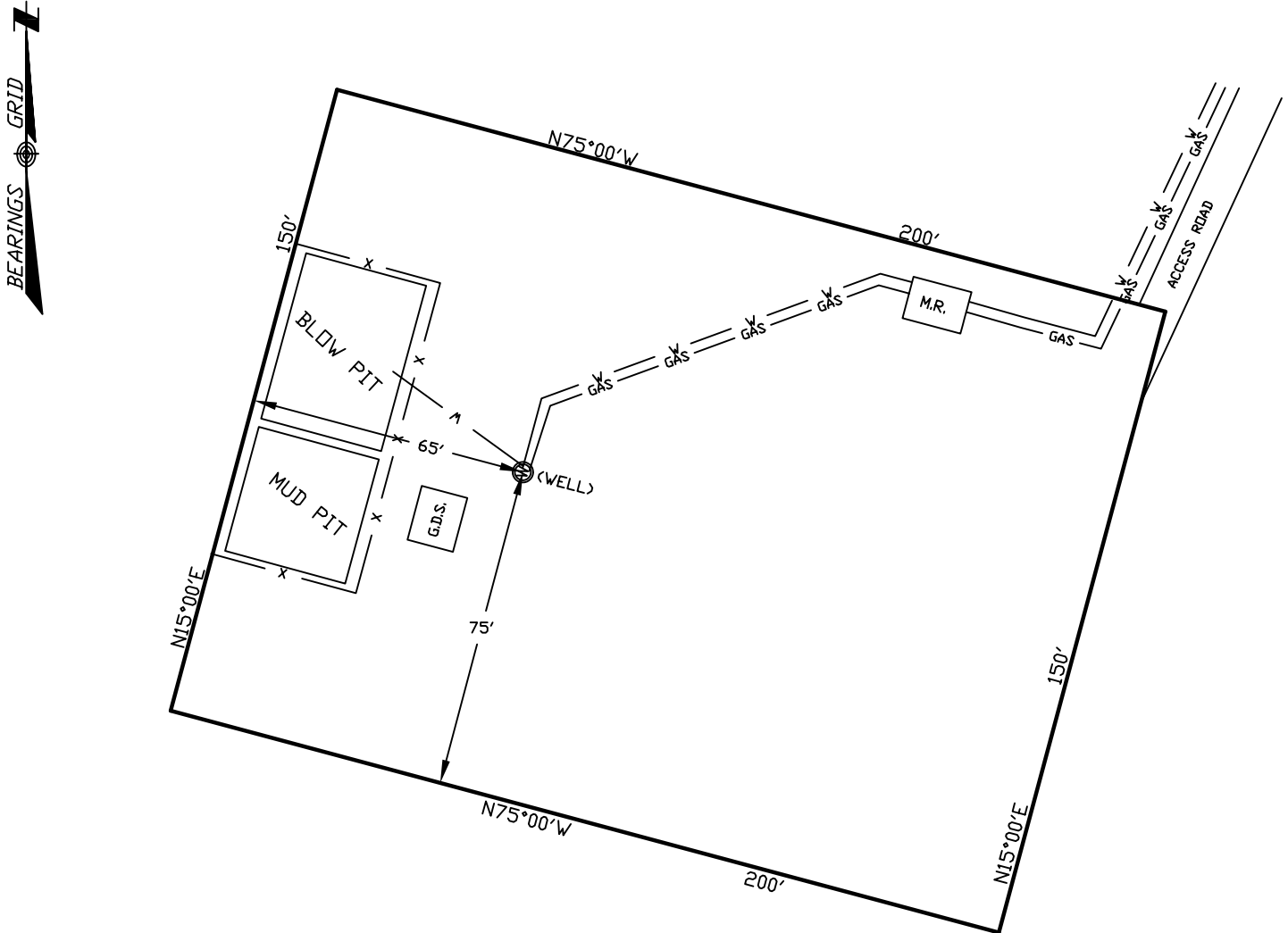


WELLSITE/PRODUCTION EQUIPMENT LAYOUT

OPERATOR: Pioneer Natural Resources

WELL NAME: Nataly Federal 21-18

NENW of SECTION 18 TOWNSHIP 33 S, RANGE 65 W OF THE 6TH P.M., IN LAS ANIMAS COUNTY



NOTE:

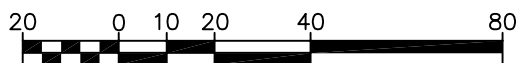
MUD AND BLOW PITS WILL BE CONVERTED TO UNLINED EVAPORATION PITS FOR PRODUCTION.

WELLHEADS ARE TYPICALLY PCP DRIVE HEADS

February 09, 2007

Date Platted

GRAPHIC SCALE



(IN FEET)

1 inch = 40 ft.

LEGEND:

- ⊙ = WELLHEAD
- — — = EXISTING WELLPAD
- X = FENCE (4 STRAND)
- GAS — = 4" GAS GATHERING LINE
- W — = 2" WATER LINE
- M.R. = COMBO METER RUN AND WATER/GAS SEPARATOR
- G.D.S. = GAS DRIVE SYSTEM

SHIELDS SURVEY L^{td}. C^o.
Raton, New Mexico 87740
(505)445-1232