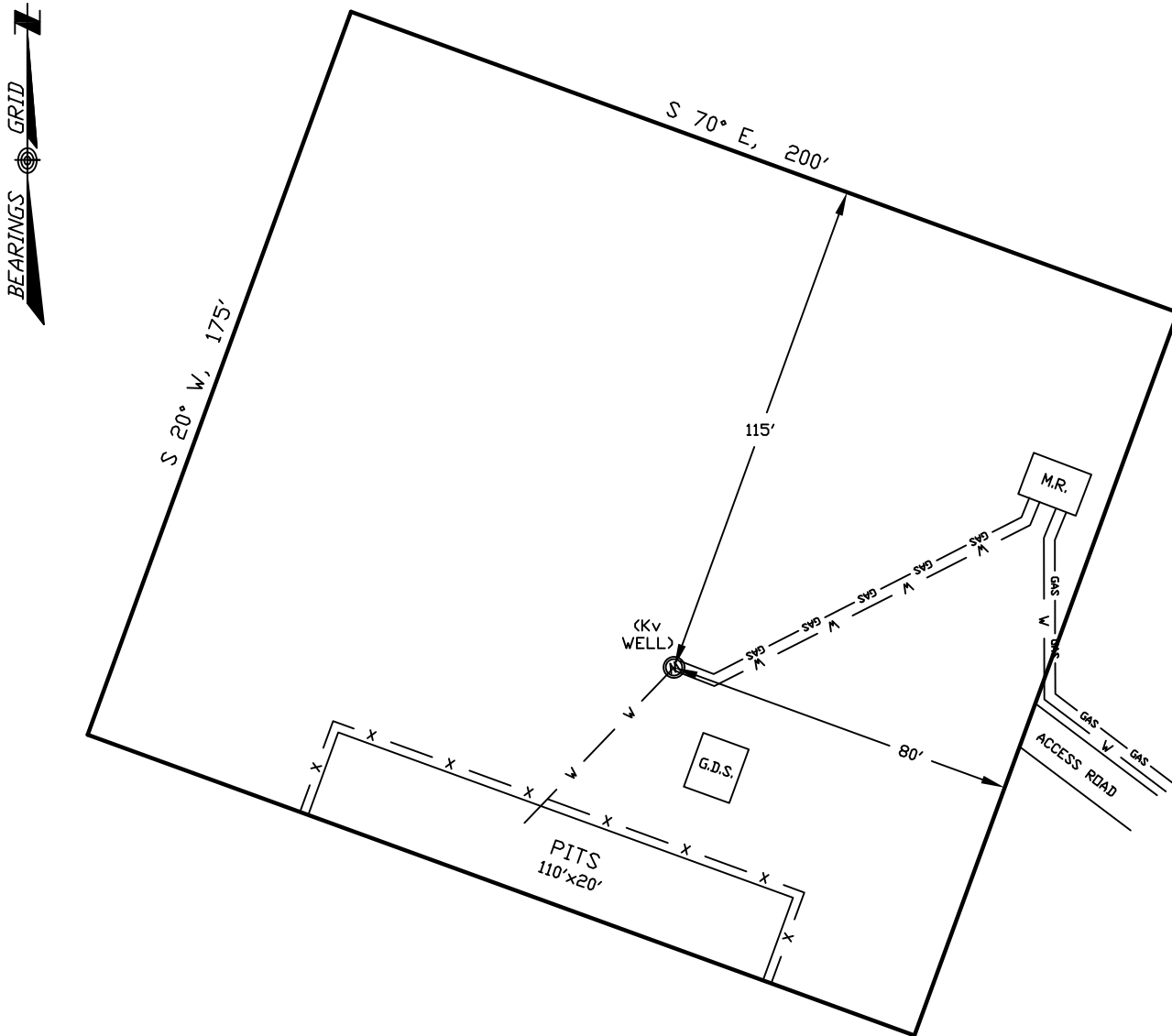


WELLSITE/PRODUCTION EQUIPMENT LAYOUT

OPERATOR: Pioneer Natural Resources

WELL NAME: MacKenzie Federal 23-2 (Revised)

NESW of SECTION 2 TOWNSHIP 32 S, RANGE 66 W OF THE 6TH P.M., IN LAS ANIMAS COUNTY



NOTE:

MUD AND BLOW PITS WILL BE CONVERTED TO UNLINED EVAPORATION PITS FOR PRODUCTION.

WELLHEADS ARE TYPICALLY PCP DRIVE HEADS

GRAPHIC SCALE



(IN FEET)

1 inch = 40 ft.

LEGEND:

- ⊙ = WELLHEAD
- = EXISTING WELLPAD
- X = FENCE (4 STRAND)
- GAS = 4" GAS GATHERING LINE
- W = 2" WATER LINE
- M.R. = COMBO METER RUN AND WATER/GAS SEPARATOR
- G.D.S. = GAS DRIVE SYSTEM

April 20, 2009

Date Platted

SHIELDS SURVEY L^{td}. C^o.
 Raton, New Mexico 87740
 (575)445-1232