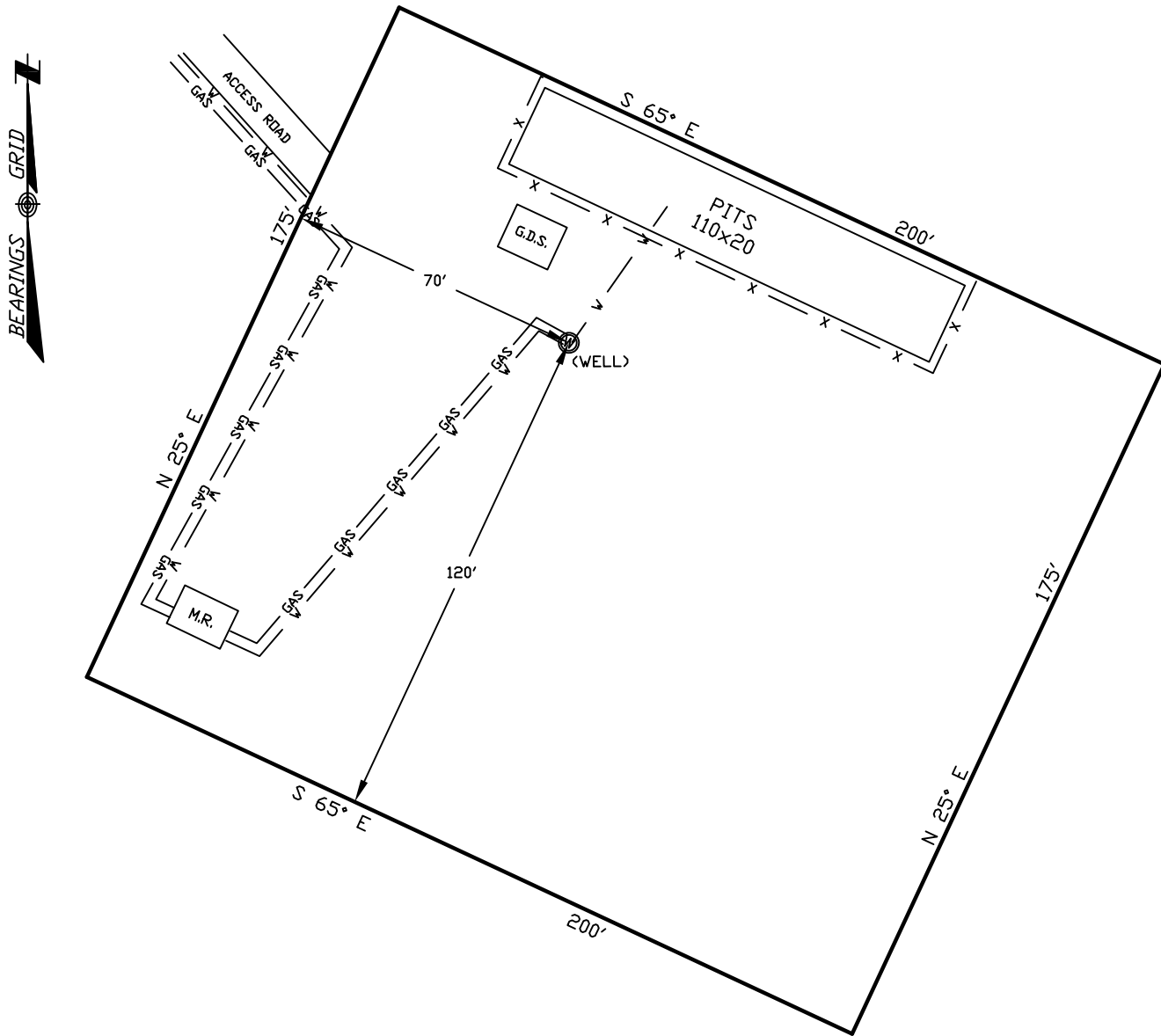


WELLSITE/PRODUCTION EQUIPMENT LAYOUT

OPERATOR: Pioneer Natural Resources

WELL NAME: Redbud 44-7

SESE of SECTION 7 TOWNSHIP 32 S, RANGE 66 W OF THE 6TH P.M., IN LAS ANIMAS COUNTY



NOTE:

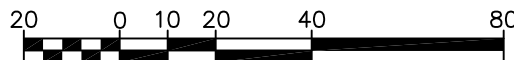
MUD AND BLOW PITS WILL BE CONVERTED TO UNLINED EVAPORATION PITS FOR PRODUCTION.

WELLHEADS ARE TYPICALLY PCP DRIVE HEADS

August 28, 2008

Date Platted

GRAPHIC SCALE



(IN FEET)

1 inch = 40 ft.

LEGEND:



= WELLHEAD

= EXISTING WELLPAD

= FENCE (4 STRAND)

= 4" GAS GATHERING LINE

= 2" WATER LINE

M.R. = COMBO METER RUN AND WATER/GAS SEPERATOR

G.D.S. = GAS DRIVE SYSTEM

SHIELDS SURVEY L^{td}. C^o.
Raton, New Mexico 87740
(505)445-1232