

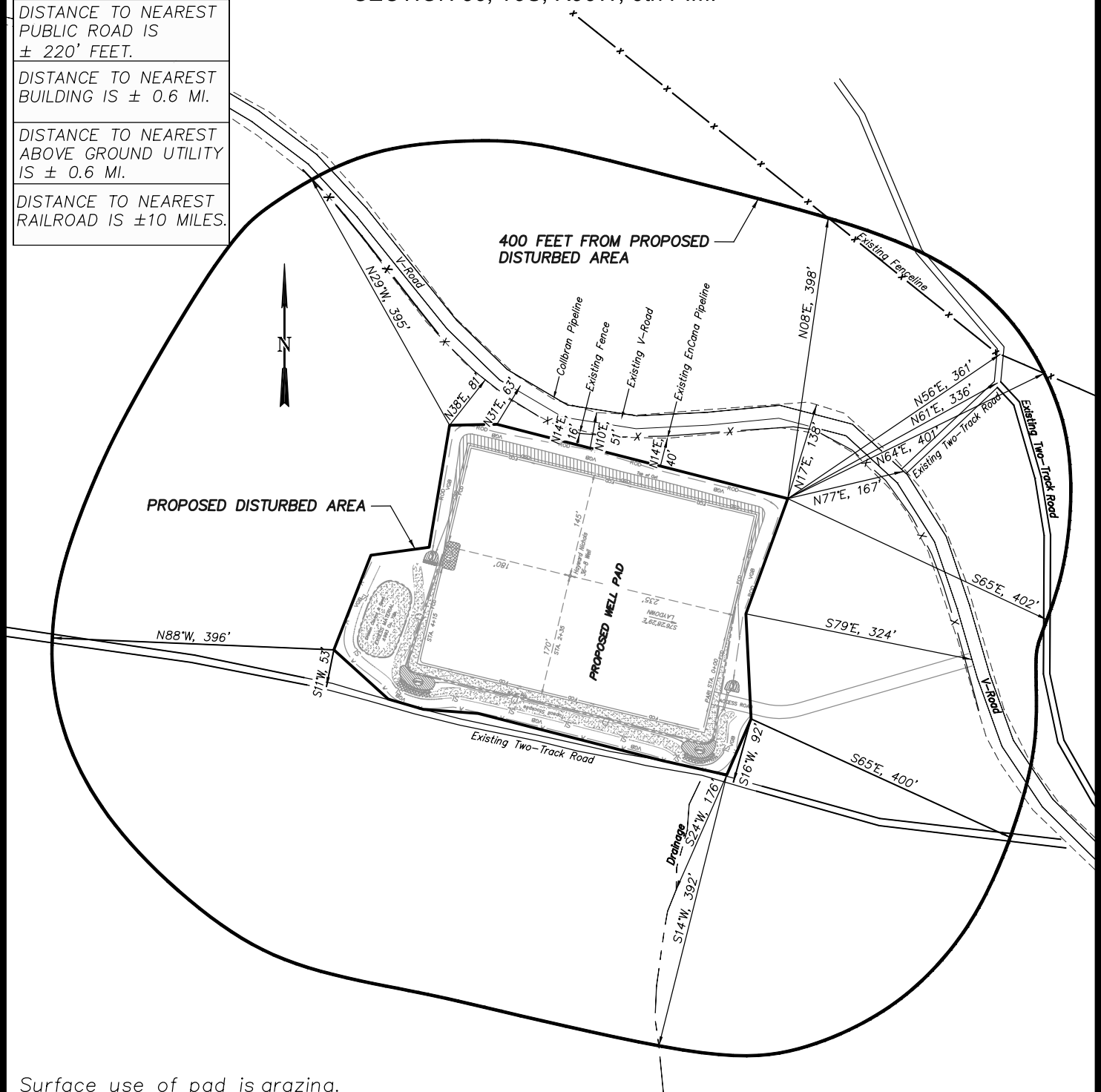
EnCana Oil & Gas (USA) Inc.
ADDENDUM TO LEGAL PLATS FOR
PL36NE2 Well Pad
SECTION 36, T9S, R96W, 6th P.M.

DISTANCE TO NEAREST
PUBLIC ROAD IS
± 220' FEET.

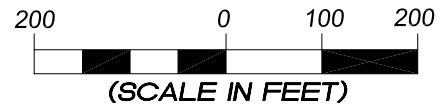
DISTANCE TO NEAREST
BUILDING IS ± 0.6 MI.

DISTANCE TO NEAREST
ABOVE GROUND UTILITY
IS ± 0.6 MI.

DISTANCE TO NEAREST
RAILROAD IS ±10 MILES.



Surface use of pad is grazing.
 Vegetation consists mainly of
 sage brush, oak brush and native
 grasses.



906 Main Street
 Evanston, Wyoming 82930
 Phone No. (307) 789-4545

Addendum		Scale: 1" = 200'	SHEET 1a OF 10
Project No.	09-04-41	Date Surveyed: 8/25/09	
Date Drawn:	9/11/09	Latest Revision Date: 11/10/09	