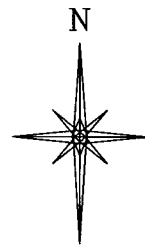
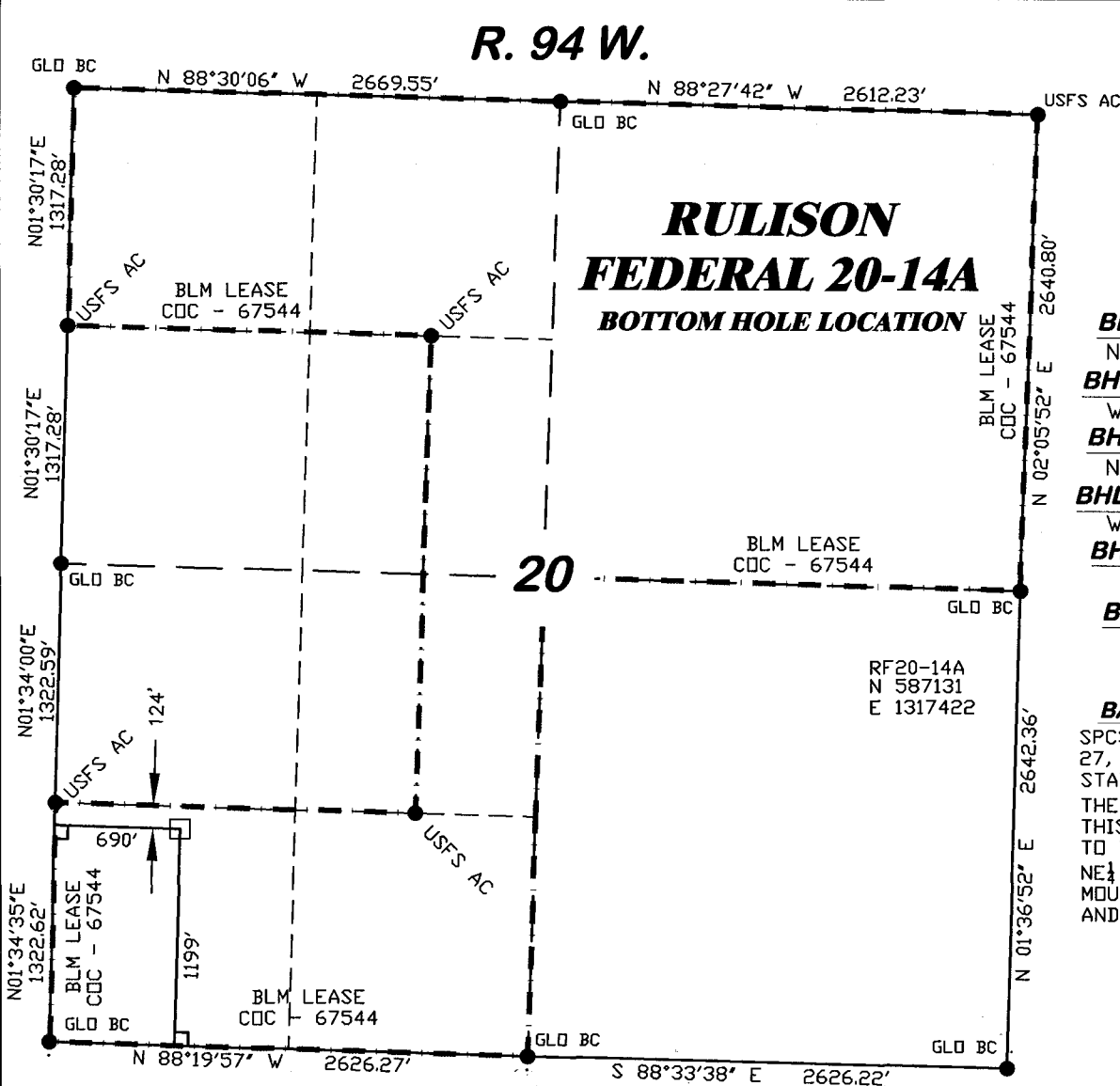


R. 94 W.



SCALE: 1" = 1000'

T. 7 S.

BHL LATITUDE (NAD 27)

NORTH 39.420548 DEG.

BHL LONGITUDE (NAD 27)

WEST 107.916402 DEG.

BHL LATITUDE (NAD 83)

NORTH 39.420526 DEG.

BHL LONGITUDE (NAD 83)

WEST 107.917027 DEG.

BHL NORTHING (NAD27)

587131

BHL EASTING (NAD27)

1317422

BASIS OF BEARING

SPCS CO CENTRAL NAD 27, BASED ON NGS TRIG. STATION "FABER"

THE BASIS OF BEARINGS FOR THIS SURVEY IS REFERENCED TO THE NORTH LINE OF THE NE $\frac{1}{4}$ OF SECTION 19, BEING MOUNTED WITH GLO BC'S AND BEARING N 88° 28' 39" W.

LEGEND

- ◆ WELL LOCATION
- FOUND MONUMENT
- L DENOTES 90° TIE
- BHL LOCATION



SURVEYOR'S STATEMENT

I, Ronald C. Rennke, an employee and agent on behalf of D.R. GRIFFIN & ASSOCIATES, INC. state the plat hereon is a correct representation of a survey made under my supervision on September 17, 2008 of the shown RULISON FEDERAL 20-14A Bottom Hole Location

NOTES

GPS OPERATOR RICHARD BULLEN OBSERVED A PDOP OF 2.7.

ALL GPS OBSERVATIONS ARE IN COMPLIANCE WITH COGCC RULE NO. 215.

10/31/09
Ronald C. Rennke
COLORADO PLS No. 37065

19 "I" PAD

<div data-bbox="122 1781 308 1897" data-label="Image"> </div> <div data-bbox="298 1833 737 1868" data-label="Text"> <p>RIFFIN & ASSOCIATES, INC.</p> </div> <div data-bbox="39 1877 164 1900" data-label="Text"> <p>(307) 362-5028</p> </div> <div data-bbox="298 1868 734 1897" data-label="Text"> <p>1414 ELK ST., ROCK SPRINGS, WY 82901</p> </div> <div data-bbox="52 1910 399 1941" data-label="Text"> <p>DATE DRAWN: 9/29/08-rcr</p> </div> <div data-bbox="494 1910 740 1941" data-label="Text"> <p>SCALE: 1" = 1000'</p> </div> <div data-bbox="47 1945 373 1976" data-label="Text"> <p>REVISED: 10/29/09-WWG</p> </div> <div data-bbox="504 1945 707 1976" data-label="Text"> <p>JOB No. 15569</p> </div> <div data-bbox="47 1993 355 2024" data-label="Text"> <p>REVISED TITLE BLOCK</p> </div> <div data-bbox="545 1993 681 2024" data-label="Text"> <p>EXHIBIT 1</p> </div>		<p>LOCATION DRAWING 17 OF 18</p> <p>PLAT OF DRILLING LOCATION FOR NOBLE ENERGY, INC.</p> <p>1199' F/SL & 690' F/WL, SECTION 20, T. 7 S., R. 94 W., 6th P.M. GARFIELD COUNTY, COLORADO</p>	
--	--	--	--