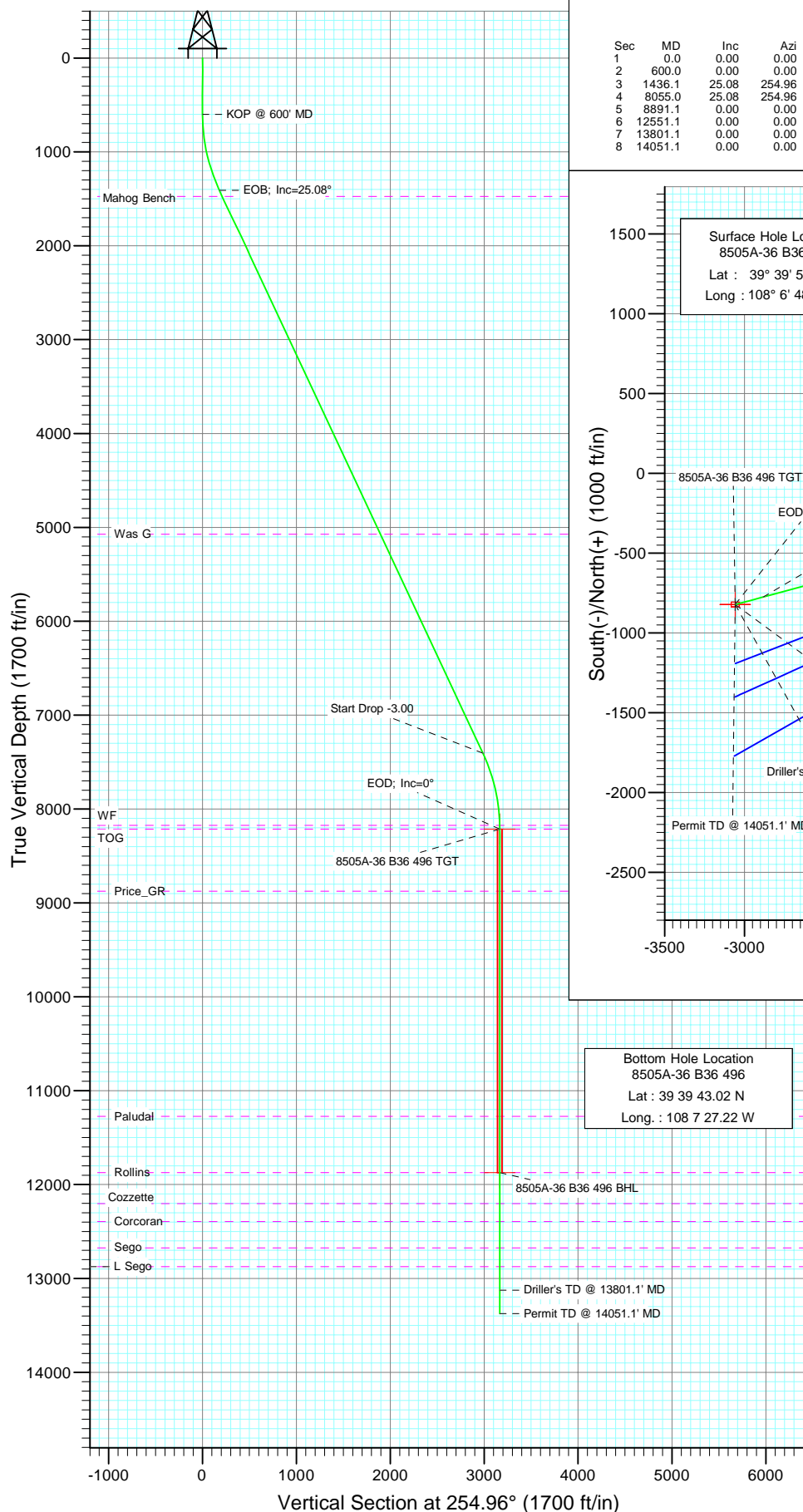
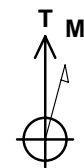
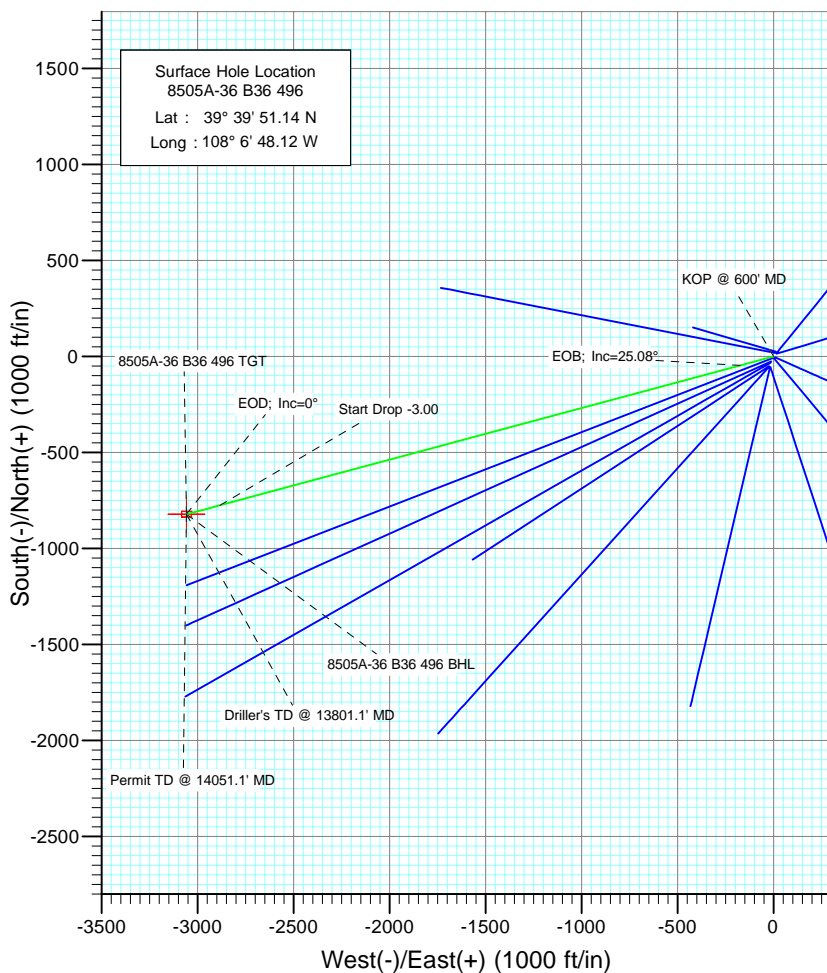




Project: Story Gulch
Site: S36-T4S-R96W (B36 496)
Well: 8505A-36 B36 496
Wellbore: DD
Design: Plan #1



SECTION DETAILS										
Sec	MD	Inc	Azi	TVD	+N/-S	+E/-W	DLeg	TFace	VSec	Target
1	0.0	0.00	0.00	0.0	0.0	0.0	0.00	0.00	0.0	
2	600.0	0.00	0.00	600.0	0.0	0.0	0.00	0.00	0.0	
3	1436.1	25.08	254.96	1409.6	-46.7	-173.9	3.00	254.96	180.1	
4	8055.0	25.08	254.96	7404.4	-775.0	-2883.6	0.00	0.00	2986.0	
5	8891.1	0.00	0.00	8214.0	-821.8	-3057.6	3.00	180.00	3166.1	8505A-36 B36 496 TGT
6	12551.1	0.00	0.00	11874.0	-821.8	-3057.6	0.00	0.00	3166.1	8505A-36 B36 496 BHL
7	13801.1	0.00	0.00	13124.0	-821.8	-3057.6	0.00	0.00	3166.1	
8	14051.1	0.00	0.00	13374.0	-821.8	-3057.6	0.00	0.00	3166.1	



Azimuths to True North
Magnetic North: 10.64°

Magnetic Field
Strength: 52515.9snT
Dip Angle: 65.91°
Date: 8/26/2009
Model: IGRF200510

FORMATION TOP DETAILS

TVDPath	MDPath	Formation
1474.0	1507.2	Mahog Bench
5074.0	5482.0	Was G
8174.0	8851.1	WF
8214.0	8891.1	TOG
8874.0	9551.1	Price_GR
11274.0	11951.1	Paludal
11874.0	12551.1	Rollins
12204.0	12881.1	Cozzette
12394.0	13071.1	Corcoran
12674.0	13351.1	Sego
12874.0	13551.1	L Sego

DESIGN DETAILS: Plan #1

95XXX: BH
KBE @ 8374.0ft (Original Well Elev)

Target	Azimuth	Origin	N/S	E/W	From TVD
8505A-36 B36 496 BHL	254.96	Slot	0.0	0.0	0.0

Directional Plus

Planning Report

Database:	EDM 2003.21 US Multi User Db	Local Co-ordinate Reference:	Well 8505A-36 B36 496
Company:	EnCana Oil & Gas (USA) Inc	TVD Reference:	KBE @ 8374.0ft (Original Well Elev)
Project:	Story Gulch	MD Reference:	KBE @ 8374.0ft (Original Well Elev)
Site:	S36-T4S-R96W (B36 496)	North Reference:	True
Well:	8505A-36 B36 496	Survey Calculation Method:	Minimum Curvature
Wellbore:	DD		
Design:	Plan #1		

Project	Story Gulch		
Map System:	US State Plane 1983	System Datum:	Mean Sea Level
Geo Datum:	North American Datum 1983		
Map Zone:	Colorado Central Zone		

Site		S36-T4S-R96W (B36 496)			
Site Position:		Northing:	1,677,422.27 ft	Latitude:	39° 39' 51.36 N
From:	Lat/Long	Easting:	2,264,394.80 ft	Longitude:	108° 6' 47.88 W
Position Uncertainty:	0.0 ft	Slot Radius:	in	Grid Convergence:	-1.65 °

Well	8505A-36 B36 496					
Well Position	+N/-S	0.0 ft	Northing:	1,677,400.91 ft	Latitude:	39° 39' 51.14 N
	+E/-W	0.0 ft	Easting:	2,264,375.00 ft	Longitude:	108° 6' 48.12 W
Position Uncertainty		0.0 ft	Wellhead Elevation:	ft	Ground Level:	8,352.0 ft

Wellbore	DD				
Magnetics	Model Name	Sample Date	Declination (°)	Dip Angle (°)	Field Strength (nT)
	IGRF200510	8/26/2009	10.64	65.92	52,516

Design	Plan #1				
Audit Notes:					
Version:	Phase:	PLAN		Tie On Depth:	0.0
Vertical Section:	Depth From (TVD) (ft)	+N/-S (ft)	+E/-W (ft)	Direction (°)	
	0.0	0.0	0.0	254.96	

Plan Sections										
Measured Depth (ft)	Inclination (°)	Azimuth (°)	Vertical Depth (ft)	+N/-S (ft)	+E/-W (ft)	Dogleg Rate (°/100ft)	Build Rate (°/100ft)	Turn Rate (°/100ft)	TFO (°)	Target
0.0	0.00	0.00	0.0	0.0	0.0	0.00	0.00	0.00	0.00	
600.0	0.00	0.00	600.0	0.0	0.0	0.00	0.00	0.00	0.00	
1,436.1	25.08	254.96	1,409.6	-46.7	-173.9	3.00	3.00	0.00	254.96	
8,055.0	25.08	254.96	7,404.4	-775.0	-2,883.6	0.00	0.00	0.00	0.00	
8,891.1	0.00	0.00	8,214.0	-821.8	-3,057.6	3.00	-3.00	0.00	180.00	8505A-36 B36 496 TC
12,551.1	0.00	0.00	11,874.0	-821.8	-3,057.6	0.00	0.00	0.00	0.00	8505A-36 B36 496 BT
13,801.1	0.00	0.00	13,124.0	-821.8	-3,057.6	0.00	0.00	0.00	0.00	
14,051.1	0.00	0.00	13,374.0	-821.8	-3,057.6	0.00	0.00	0.00	0.00	

Directional Plus

Planning Report

Database:	EDM 2003.21 US Multi User Db	Local Co-ordinate Reference:	Well 8505A-36 B36 496
Company:	EnCana Oil & Gas (USA) Inc	TVD Reference:	KBE @ 8374.0ft (Original Well Elev)
Project:	Story Gulch	MD Reference:	KBE @ 8374.0ft (Original Well Elev)
Site:	S36-T4S-R96W (B36 496)	North Reference:	True
Well:	8505A-36 B36 496	Survey Calculation Method:	Minimum Curvature
Wellbore:	DD		
Design:	Plan #1		

Planned Survey

Measured Depth (ft)	Inclination (°)	Azimuth (°)	Vertical Depth (ft)	+N/-S (ft)	+E/-W (ft)	Vertical Section (ft)	Dogleg Rate (°/100ft)	Build Rate (°/100ft)	Comments / Formations
0.0	0.00	0.00	0.0	0.0	0.0	0.0	0.00	0.00	
100.0	0.00	0.00	100.0	0.0	0.0	0.0	0.00	0.00	
200.0	0.00	0.00	200.0	0.0	0.0	0.0	0.00	0.00	
300.0	0.00	0.00	300.0	0.0	0.0	0.0	0.00	0.00	
400.0	0.00	0.00	400.0	0.0	0.0	0.0	0.00	0.00	
500.0	0.00	0.00	500.0	0.0	0.0	0.0	0.00	0.00	
600.0	0.00	0.00	600.0	0.0	0.0	0.0	0.00	0.00	KOP @ 600' MD
700.0	3.00	254.96	700.0	-0.7	-2.5	2.6	3.00	3.00	
800.0	6.00	254.96	799.6	-2.7	-10.1	10.5	3.00	3.00	
900.0	9.00	254.96	898.8	-6.1	-22.7	23.5	3.00	3.00	
1,000.0	12.00	254.96	997.1	-10.8	-40.3	41.7	3.00	3.00	
1,100.0	15.00	254.96	1,094.3	-16.9	-62.8	65.1	3.00	3.00	
1,200.0	18.00	254.96	1,190.2	-24.3	-90.3	93.5	3.00	3.00	
1,300.0	21.00	254.96	1,284.4	-32.9	-122.5	126.9	3.00	3.00	
1,400.0	24.00	254.96	1,376.8	-42.9	-159.5	165.1	3.00	3.00	
1,436.1	25.08	254.96	1,409.6	-46.7	-173.9	180.1	3.00	3.00	EOB; Inc=25.08°
1,500.0	25.08	254.96	1,467.5	-53.8	-200.1	207.2	0.00	0.00	
1,507.2	25.08	254.96	1,474.0	-54.6	-203.0	210.2	0.00	0.00	Mahog Bench
1,600.0	25.08	254.96	1,558.1	-64.8	-241.0	249.6	0.00	0.00	
1,700.0	25.08	254.96	1,648.7	-75.8	-282.0	292.0	0.00	0.00	
1,800.0	25.08	254.96	1,739.2	-86.8	-322.9	334.4	0.00	0.00	
1,900.0	25.08	254.96	1,829.8	-97.8	-363.9	376.8	0.00	0.00	
2,000.0	25.08	254.96	1,920.4	-108.8	-404.8	419.2	0.00	0.00	
2,100.0	25.08	254.96	2,010.9	-119.8	-445.7	461.5	0.00	0.00	
2,200.0	25.08	254.96	2,101.5	-130.8	-486.7	503.9	0.00	0.00	
2,300.0	25.08	254.96	2,192.1	-141.8	-527.6	546.3	0.00	0.00	
2,400.0	25.08	254.96	2,282.7	-152.8	-568.5	588.7	0.00	0.00	
2,500.0	25.08	254.96	2,373.2	-163.8	-609.5	631.1	0.00	0.00	
2,600.0	25.08	254.96	2,463.8	-174.8	-650.4	673.5	0.00	0.00	
2,700.0	25.08	254.96	2,554.4	-185.8	-691.4	715.9	0.00	0.00	
2,800.0	25.08	254.96	2,644.9	-196.8	-732.3	758.3	0.00	0.00	
2,900.0	25.08	254.96	2,735.5	-207.8	-773.2	800.7	0.00	0.00	
3,000.0	25.08	254.96	2,826.1	-218.8	-814.2	843.1	0.00	0.00	
3,100.0	25.08	254.96	2,916.6	-229.8	-855.1	885.5	0.00	0.00	
3,200.0	25.08	254.96	3,007.2	-240.8	-896.1	927.9	0.00	0.00	
3,300.0	25.08	254.96	3,097.8	-251.8	-937.0	970.3	0.00	0.00	
3,400.0	25.08	254.96	3,188.4	-262.8	-977.9	1,012.6	0.00	0.00	
3,500.0	25.08	254.96	3,278.9	-273.8	-1,018.9	1,055.0	0.00	0.00	
3,600.0	25.08	254.96	3,369.5	-284.8	-1,059.8	1,097.4	0.00	0.00	
3,700.0	25.08	254.96	3,460.1	-295.8	-1,100.8	1,139.8	0.00	0.00	
3,800.0	25.08	254.96	3,550.6	-306.8	-1,141.7	1,182.2	0.00	0.00	
3,900.0	25.08	254.96	3,641.2	-317.9	-1,182.6	1,224.6	0.00	0.00	
4,000.0	25.08	254.96	3,731.8	-328.9	-1,223.6	1,267.0	0.00	0.00	
4,100.0	25.08	254.96	3,822.3	-339.9	-1,264.5	1,309.4	0.00	0.00	
4,200.0	25.08	254.96	3,912.9	-350.9	-1,305.5	1,351.8	0.00	0.00	
4,300.0	25.08	254.96	4,003.5	-361.9	-1,346.4	1,394.2	0.00	0.00	
4,400.0	25.08	254.96	4,094.1	-372.9	-1,387.3	1,436.6	0.00	0.00	
4,500.0	25.08	254.96	4,184.6	-383.9	-1,428.3	1,479.0	0.00	0.00	
4,600.0	25.08	254.96	4,275.2	-394.9	-1,469.2	1,521.3	0.00	0.00	
4,700.0	25.08	254.96	4,365.8	-405.9	-1,510.1	1,563.7	0.00	0.00	
4,800.0	25.08	254.96	4,456.3	-416.9	-1,551.1	1,606.1	0.00	0.00	
4,900.0	25.08	254.96	4,546.9	-427.9	-1,592.0	1,648.5	0.00	0.00	

Directional Plus

Planning Report

Database:	EDM 2003.21 US Multi User Db	Local Co-ordinate Reference:	Well 8505A-36 B36 496
Company:	EnCana Oil & Gas (USA) Inc	TVD Reference:	KBE @ 8374.0ft (Original Well Elev)
Project:	Story Gulch	MD Reference:	KBE @ 8374.0ft (Original Well Elev)
Site:	S36-T4S-R96W (B36 496)	North Reference:	True
Well:	8505A-36 B36 496	Survey Calculation Method:	Minimum Curvature
Wellbore:	DD		
Design:	Plan #1		

Planned Survey

Measured Depth (ft)	Inclination (°)	Azimuth (°)	Vertical Depth (ft)	+N/-S (ft)	+E/-W (ft)	Vertical Section (ft)	Dogleg Rate (°/100ft)	Build Rate (°/100ft)	Comments / Formations
5,000.0	25.08	254.96	4,637.5	-438.9	-1,633.0	1,690.9	0.00	0.00	
5,100.0	25.08	254.96	4,728.0	-449.9	-1,673.9	1,733.3	0.00	0.00	
5,200.0	25.08	254.96	4,818.6	-460.9	-1,714.8	1,775.7	0.00	0.00	
5,300.0	25.08	254.96	4,909.2	-471.9	-1,755.8	1,818.1	0.00	0.00	
5,400.0	25.08	254.96	4,999.8	-482.9	-1,796.7	1,860.5	0.00	0.00	
5,482.0	25.08	254.96	5,074.0	-491.9	-1,830.3	1,895.2	0.00	0.00	Was G
5,500.0	25.08	254.96	5,090.3	-493.9	-1,837.7	1,902.9	0.00	0.00	
5,600.0	25.08	254.96	5,180.9	-504.9	-1,878.6	1,945.3	0.00	0.00	
5,700.0	25.08	254.96	5,271.5	-515.9	-1,919.5	1,987.7	0.00	0.00	
5,800.0	25.08	254.96	5,362.0	-526.9	-1,960.5	2,030.0	0.00	0.00	
5,900.0	25.08	254.96	5,452.6	-537.9	-2,001.4	2,072.4	0.00	0.00	
6,000.0	25.08	254.96	5,543.2	-548.9	-2,042.4	2,114.8	0.00	0.00	
6,100.0	25.08	254.96	5,633.7	-559.9	-2,083.3	2,157.2	0.00	0.00	
6,200.0	25.08	254.96	5,724.3	-570.9	-2,124.2	2,199.6	0.00	0.00	
6,300.0	25.08	254.96	5,814.9	-581.9	-2,165.2	2,242.0	0.00	0.00	
6,400.0	25.08	254.96	5,905.5	-592.9	-2,206.1	2,284.4	0.00	0.00	
6,500.0	25.08	254.96	5,996.0	-603.9	-2,247.0	2,326.8	0.00	0.00	
6,600.0	25.08	254.96	6,086.6	-614.9	-2,288.0	2,369.2	0.00	0.00	
6,700.0	25.08	254.96	6,177.2	-625.9	-2,328.9	2,411.6	0.00	0.00	
6,800.0	25.08	254.96	6,267.7	-636.9	-2,369.9	2,454.0	0.00	0.00	
6,900.0	25.08	254.96	6,358.3	-647.9	-2,410.8	2,496.4	0.00	0.00	
7,000.0	25.08	254.96	6,448.9	-658.9	-2,451.7	2,538.8	0.00	0.00	
7,100.0	25.08	254.96	6,539.4	-669.9	-2,492.7	2,581.1	0.00	0.00	
7,200.0	25.08	254.96	6,630.0	-681.0	-2,533.6	2,623.5	0.00	0.00	
7,300.0	25.08	254.96	6,720.6	-692.0	-2,574.6	2,665.9	0.00	0.00	
7,400.0	25.08	254.96	6,811.2	-703.0	-2,615.5	2,708.3	0.00	0.00	
7,500.0	25.08	254.96	6,901.7	-714.0	-2,656.4	2,750.7	0.00	0.00	
7,600.0	25.08	254.96	6,992.3	-725.0	-2,697.4	2,793.1	0.00	0.00	
7,700.0	25.08	254.96	7,082.9	-736.0	-2,738.3	2,835.5	0.00	0.00	
7,800.0	25.08	254.96	7,173.4	-747.0	-2,779.3	2,877.9	0.00	0.00	
7,900.0	25.08	254.96	7,264.0	-758.0	-2,820.2	2,920.3	0.00	0.00	
8,000.0	25.08	254.96	7,354.6	-769.0	-2,861.1	2,962.7	0.00	0.00	
8,055.0	25.08	254.96	7,404.4	-775.0	-2,883.6	2,986.0	0.00	0.00	Start Drop -3.00
8,100.0	23.73	254.96	7,445.4	-779.9	-2,901.6	3,004.6	3.00	-3.00	
8,200.0	20.73	254.96	7,537.9	-789.7	-2,938.1	3,042.4	3.00	-3.00	
8,300.0	17.73	254.96	7,632.3	-798.2	-2,969.9	3,075.3	3.00	-3.00	
8,400.0	14.73	254.96	7,728.3	-805.5	-2,996.9	3,103.3	3.00	-3.00	
8,500.0	11.73	254.96	7,825.7	-811.4	-3,019.0	3,126.2	3.00	-3.00	
8,600.0	8.73	254.96	7,924.1	-816.0	-3,036.2	3,143.9	3.00	-3.00	
8,700.0	5.73	254.96	8,023.3	-819.3	-3,048.4	3,156.5	3.00	-3.00	
8,800.0	2.73	254.96	8,123.0	-821.2	-3,055.5	3,163.9	3.00	-3.00	
8,851.1	1.20	254.96	8,174.0	-821.7	-3,057.2	3,165.7	3.00	-3.00	WF
8,891.1	0.00	0.00	8,214.0	-821.8	-3,057.6	3,166.1	3.00	-3.00	EOD; Inc=0° - TOG - 8505A-36 B36 496 TGT
8,900.0	0.00	0.00	8,222.9	-821.8	-3,057.6	3,166.1	0.00	0.00	
9,000.0	0.00	0.00	8,322.9	-821.8	-3,057.6	3,166.1	0.00	0.00	
9,100.0	0.00	0.00	8,422.9	-821.8	-3,057.6	3,166.1	0.00	0.00	
9,200.0	0.00	0.00	8,522.9	-821.8	-3,057.6	3,166.1	0.00	0.00	
9,300.0	0.00	0.00	8,622.9	-821.8	-3,057.6	3,166.1	0.00	0.00	
9,400.0	0.00	0.00	8,722.9	-821.8	-3,057.6	3,166.1	0.00	0.00	
9,500.0	0.00	0.00	8,822.9	-821.8	-3,057.6	3,166.1	0.00	0.00	
9,551.1	0.00	0.00	8,874.0	-821.8	-3,057.6	3,166.1	0.00	0.00	Price_GR
9,600.0	0.00	0.00	8,922.9	-821.8	-3,057.6	3,166.1	0.00	0.00	

Directional Plus

Planning Report

Database:	EDM 2003.21 US Multi User Db	Local Co-ordinate Reference:	Well 8505A-36 B36 496
Company:	EnCana Oil & Gas (USA) Inc	TVD Reference:	KBE @ 8374.0ft (Original Well Elev)
Project:	Story Gulch	MD Reference:	KBE @ 8374.0ft (Original Well Elev)
Site:	S36-T4S-R96W (B36 496)	North Reference:	True
Well:	8505A-36 B36 496	Survey Calculation Method:	Minimum Curvature
Wellbore:	DD		
Design:	Plan #1		

Planned Survey									
Measured Depth (ft)	Inclination (°)	Azimuth (°)	Vertical Depth (ft)	+N/-S (ft)	+E/-W (ft)	Vertical Section (ft)	Dogleg Rate (°/100ft)	Build Rate (°/100ft)	Comments / Formations
9,700.0	0.00	0.00	9,022.9	-821.8	-3,057.6	3,166.1	0.00	0.00	
9,800.0	0.00	0.00	9,122.9	-821.8	-3,057.6	3,166.1	0.00	0.00	
9,900.0	0.00	0.00	9,222.9	-821.8	-3,057.6	3,166.1	0.00	0.00	
10,000.0	0.00	0.00	9,322.9	-821.8	-3,057.6	3,166.1	0.00	0.00	
10,100.0	0.00	0.00	9,422.9	-821.8	-3,057.6	3,166.1	0.00	0.00	
10,200.0	0.00	0.00	9,522.9	-821.8	-3,057.6	3,166.1	0.00	0.00	
10,300.0	0.00	0.00	9,622.9	-821.8	-3,057.6	3,166.1	0.00	0.00	
10,400.0	0.00	0.00	9,722.9	-821.8	-3,057.6	3,166.1	0.00	0.00	
10,500.0	0.00	0.00	9,822.9	-821.8	-3,057.6	3,166.1	0.00	0.00	
10,600.0	0.00	0.00	9,922.9	-821.8	-3,057.6	3,166.1	0.00	0.00	
10,700.0	0.00	0.00	10,022.9	-821.8	-3,057.6	3,166.1	0.00	0.00	
10,800.0	0.00	0.00	10,122.9	-821.8	-3,057.6	3,166.1	0.00	0.00	
10,900.0	0.00	0.00	10,222.9	-821.8	-3,057.6	3,166.1	0.00	0.00	
11,000.0	0.00	0.00	10,322.9	-821.8	-3,057.6	3,166.1	0.00	0.00	
11,100.0	0.00	0.00	10,422.9	-821.8	-3,057.6	3,166.1	0.00	0.00	
11,200.0	0.00	0.00	10,522.9	-821.8	-3,057.6	3,166.1	0.00	0.00	
11,300.0	0.00	0.00	10,622.9	-821.8	-3,057.6	3,166.1	0.00	0.00	
11,400.0	0.00	0.00	10,722.9	-821.8	-3,057.6	3,166.1	0.00	0.00	
11,500.0	0.00	0.00	10,822.9	-821.8	-3,057.6	3,166.1	0.00	0.00	
11,600.0	0.00	0.00	10,922.9	-821.8	-3,057.6	3,166.1	0.00	0.00	
11,700.0	0.00	0.00	11,022.9	-821.8	-3,057.6	3,166.1	0.00	0.00	
11,800.0	0.00	0.00	11,122.9	-821.8	-3,057.6	3,166.1	0.00	0.00	
11,900.0	0.00	0.00	11,222.9	-821.8	-3,057.6	3,166.1	0.00	0.00	
11,951.1	0.00	0.00	11,274.0	-821.8	-3,057.6	3,166.1	0.00	0.00	Paludal
12,000.0	0.00	0.00	11,322.9	-821.8	-3,057.6	3,166.1	0.00	0.00	
12,100.0	0.00	0.00	11,422.9	-821.8	-3,057.6	3,166.1	0.00	0.00	
12,200.0	0.00	0.00	11,522.9	-821.8	-3,057.6	3,166.1	0.00	0.00	
12,300.0	0.00	0.00	11,622.9	-821.8	-3,057.6	3,166.1	0.00	0.00	
12,400.0	0.00	0.00	11,722.9	-821.8	-3,057.6	3,166.1	0.00	0.00	
12,500.0	0.00	0.00	11,822.9	-821.8	-3,057.6	3,166.1	0.00	0.00	
12,551.1	0.00	0.00	11,874.0	-821.8	-3,057.6	3,166.1	0.00	0.00	Rollins - 8505A-36 B36 496 BHL
12,600.0	0.00	0.00	11,922.9	-821.8	-3,057.6	3,166.1	0.00	0.00	
12,700.0	0.00	0.00	12,022.9	-821.8	-3,057.6	3,166.1	0.00	0.00	
12,800.0	0.00	0.00	12,122.9	-821.8	-3,057.6	3,166.1	0.00	0.00	
12,881.1	0.00	0.00	12,204.0	-821.8	-3,057.6	3,166.1	0.00	0.00	Cozzette
12,900.0	0.00	0.00	12,222.9	-821.8	-3,057.6	3,166.1	0.00	0.00	
13,000.0	0.00	0.00	12,322.9	-821.8	-3,057.6	3,166.1	0.00	0.00	
13,071.1	0.00	0.00	12,394.0	-821.8	-3,057.6	3,166.1	0.00	0.00	Corcoran
13,100.0	0.00	0.00	12,422.9	-821.8	-3,057.6	3,166.1	0.00	0.00	
13,200.0	0.00	0.00	12,522.9	-821.8	-3,057.6	3,166.1	0.00	0.00	
13,300.0	0.00	0.00	12,622.9	-821.8	-3,057.6	3,166.1	0.00	0.00	
13,351.1	0.00	0.00	12,674.0	-821.8	-3,057.6	3,166.1	0.00	0.00	Sego
13,400.0	0.00	0.00	12,722.9	-821.8	-3,057.6	3,166.1	0.00	0.00	
13,500.0	0.00	0.00	12,822.9	-821.8	-3,057.6	3,166.1	0.00	0.00	
13,551.1	0.00	0.00	12,874.0	-821.8	-3,057.6	3,166.1	0.00	0.00	L Sego
13,600.0	0.00	0.00	12,922.9	-821.8	-3,057.6	3,166.1	0.00	0.00	
13,700.0	0.00	0.00	13,022.9	-821.8	-3,057.6	3,166.1	0.00	0.00	
13,800.0	0.00	0.00	13,122.9	-821.8	-3,057.6	3,166.1	0.00	0.00	
13,801.1	0.00	0.00	13,124.0	-821.8	-3,057.6	3,166.1	0.00	0.00	Driller's TD @ 13801.1' MD
13,900.0	0.00	0.00	13,222.9	-821.8	-3,057.6	3,166.1	0.00	0.00	
14,000.0	0.00	0.00	13,322.9	-821.8	-3,057.6	3,166.1	0.00	0.00	
14,051.1	0.00	0.00	13,374.0	-821.8	-3,057.6	3,166.1	0.00	0.00	

Directional Plus

Planning Report

Database:	EDM 2003.21 US Multi User Db	Local Co-ordinate Reference:	Well 8505A-36 B36 496
Company:	EnCana Oil & Gas (USA) Inc	TVD Reference:	KBE @ 8374.0ft (Original Well Elev)
Project:	Story Gulch	MD Reference:	KBE @ 8374.0ft (Original Well Elev)
Site:	S36-T4S-R96W (B36 496)	North Reference:	True
Well:	8505A-36 B36 496	Survey Calculation Method:	Minimum Curvature
Wellbore:	DD		
Design:	Plan #1		

Planned Survey									
Measured Depth (ft)	Inclination (°)	Azimuth (°)	Vertical Depth (ft)	+N/-S (ft)	+E/-W (ft)	Vertical Section (ft)	Dogleg Rate (°/100ft)	Build Rate (°/100ft)	Comments / Formations

Targets									
Target Name	Dip Angle (°)	Dip Dir. (°)	TVD (ft)	+N/-S (ft)	+E/-W (ft)	Northing (ft)	Easting (ft)	Latitude	Longitude
8505A-36 B36 496 BHL - hit/miss target - Shape - Rectangle (sides W30.0 H50.0 D0.0)	0.00	0.00	11,874.0	-821.8	-3,057.6	1,676,667.42	2,261,295.06	39° 39' 43.02 N	108° 7' 27.22 W
8505A-36 B36 496 TGT - plan hits target center - Point	0.00	0.00	8,214.0	-821.8	-3,057.6	1,676,667.42	2,261,295.06	39° 39' 43.02 N	108° 7' 27.22 W

Formations						
Measured Depth (ft)	Vertical Depth (ft)	Name	Lithology	Dip (°)	Dip Direction (°)	
1,507.2	1,474.0	Mahog Bench		0.00		
5,482.0	5,074.0	Was G		0.00		
8,851.1	8,174.0	WF		0.00		
8,891.1	8,214.0	TOG		0.00		
9,551.1	8,874.0	Price_GR		0.00		
11,951.1	11,274.0	Paludal		0.00		
12,551.1	11,874.0	Rollins		0.00		
12,881.1	12,204.0	Cozzette		0.00		
13,071.1	12,394.0	Corcoran		0.00		
13,351.1	12,674.0	Sego		0.00		
13,551.1	12,874.0	L Sego		0.00		

Plan Annotations				
Measured Depth (ft)	Vertical Depth (ft)	Local Coordinates		Comment
		+N/-S (ft)	+E/-W (ft)	
600.0	600.0	0.0	0.0	KOP @ 600' MD
1,436.1	1,409.6	-46.7	-173.9	EOB; Inc=25.08°
8,055.0	7,404.4	-775.0	-2,883.6	Start Drop -3.00
8,891.1	8,214.0	-821.8	-3,057.6	EOD; Inc=0°
13,801.1	13,124.0	-821.8	-3,057.6	Driller's TD @ 13801.1' MD
14,051.1	13,374.0	-821.8	-3,057.6	Permit TD @ 14051.1' MD