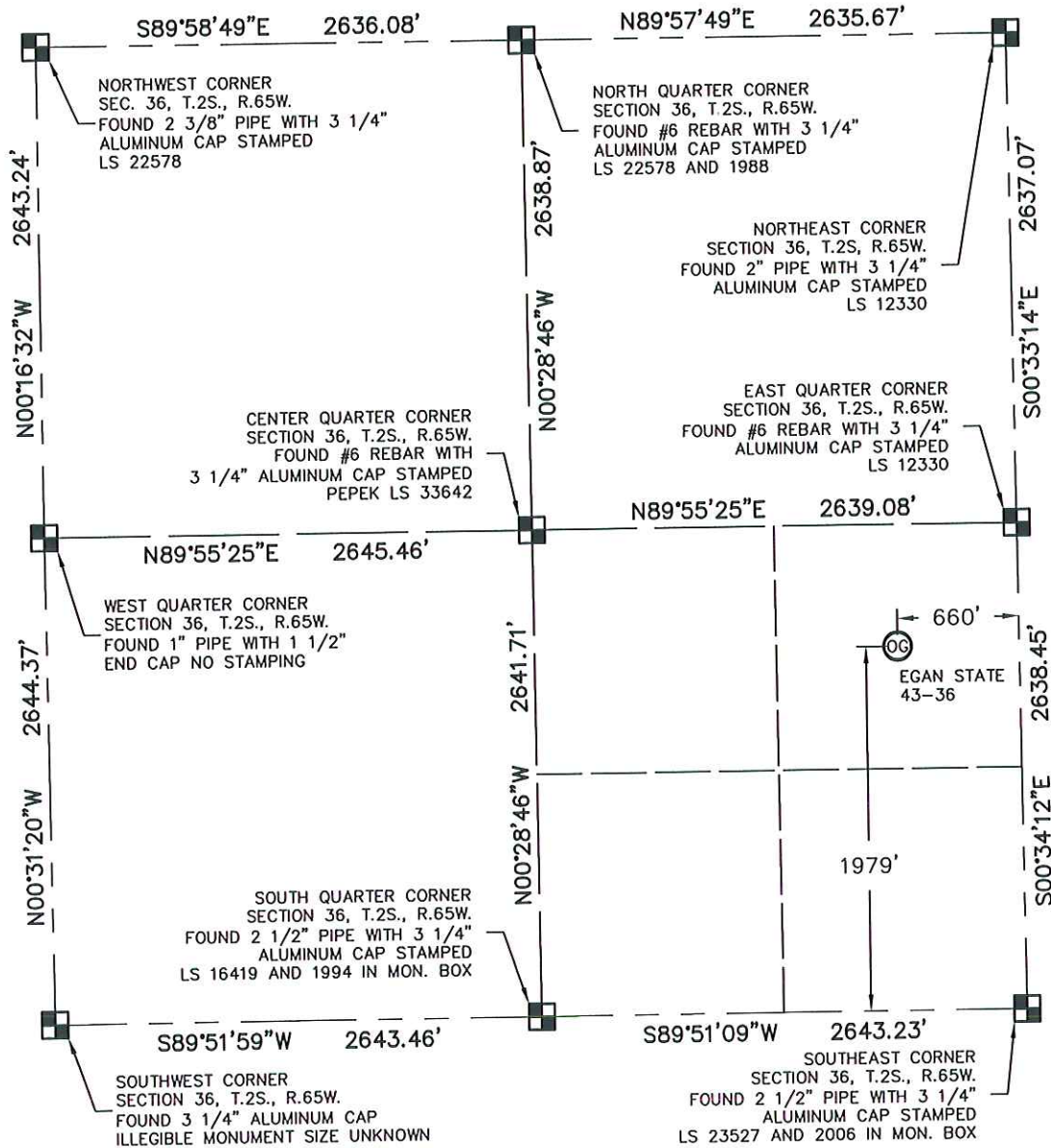


LOCATION PLAT

THIS MAP DOES NOT REPRESENT A BOUNDARY SURVEY

SECTION: 36
TOWNSHIP: 2S
RANGE: 65W



In accordance with a request from Melissa Lasley with TEXAS AMERICAN RESOURCES CO. King Surveyors Inc. has determined the surface location of the EGAN STATE 43-36 to be 660' from the East line and 1979' from the South line as measured at right angles from the section lines of Section 36, Township 2 South, Range 65 West of the Sixth Principal Meridian, County of Adams, State of Colorado.

NEAREST:
BUILDING- 5281'+ (NONE WITHIN 1-MILE)
PUBLIC ROAD- 660' EAST, WATKINS ROAD
ABOVE GROUND UTILITY- 1946' SOUTH
RAILROAD- 5281'+ (NONE WITHIN 1-MILE)

I hereby state that this Well Location Certificate was prepared by me, or under my direct supervision, that the fieldwork was completed on 09/24/2009, for and on behalf of TEXAS AMERICAN RESOURCES CO. That this is not a Land Survey Plat or an Improvement Survey Plat, and that it is not to be relied upon for establishment of fence, building, or other future improvement lines.

- NOTE:**
- Bearings shown are Grid Bearings of the Colorado State Plane Coordinate System, North Zone, North American Datum 1983/2007. The lineal dimensions as contained herein are based upon the "U.S. Survey Foot."
 - Ground elevations are based on an observed GPS elevation (NAVD 1988 DATUM).
 - IMPROVEMENTS: No visible improvements within 400' of well head.
 - SURFACE USE: CROP FIELD (SUNFLOWERS)

SURFACE LOCATION
LATITUDE: 39.83212°N
LONGITUDE: 104.60506°W
PDOP: 2.1
ELEV: 5396'
1/4, 1/4: NE1/4SE1/4
NEAREST PROPERTY LINE: 660' EAST

NOTE
According to Colorado law, you must commence any legal action based upon any defect in this W.L.C. within three years after you discover such defect. In no event, may any action based upon any defect in this survey be commenced more than ten years after the date of the certificate shown hereon. (13-80-105 C.R.S.)

LEGEND

- = ALIQUOT MONUMENT AS DESCRIBED
- = CALCULATED POSITION

Steven A. Lund - On Behalf of King Surveyors, Inc.
Licensed Land Surveyor No. 34995
State of Colorado

PROJECT#: 2006510